

NOTES:

1. MATERIALS AND FINISHES:

CONTACT - BRASS - GOLD PLATED
BODY - BRASS - GOLD PLATED
SLEEVE - BRASS - WHITE BRONZE PLATED
OUTER CONTACT - PHOSPHOR BRONZE - WHITE BRONZE PLATED
CAP - STAINLESS STEEL - GOLD PLATED
INSULATOR - PTFE

2. PHYSICAL:

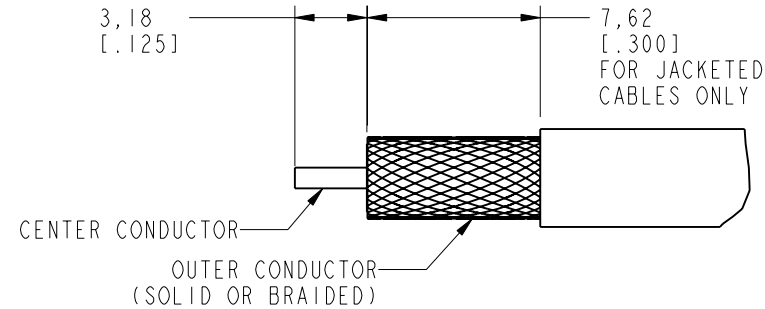
A. OPERATING TEMPERATURE = -65°C to +165°C
B. CONTACT RETENTION = 6.0 LBS. AXIAL

3. ELECTRICAL:

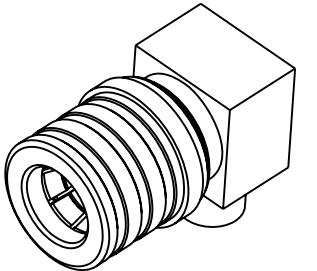
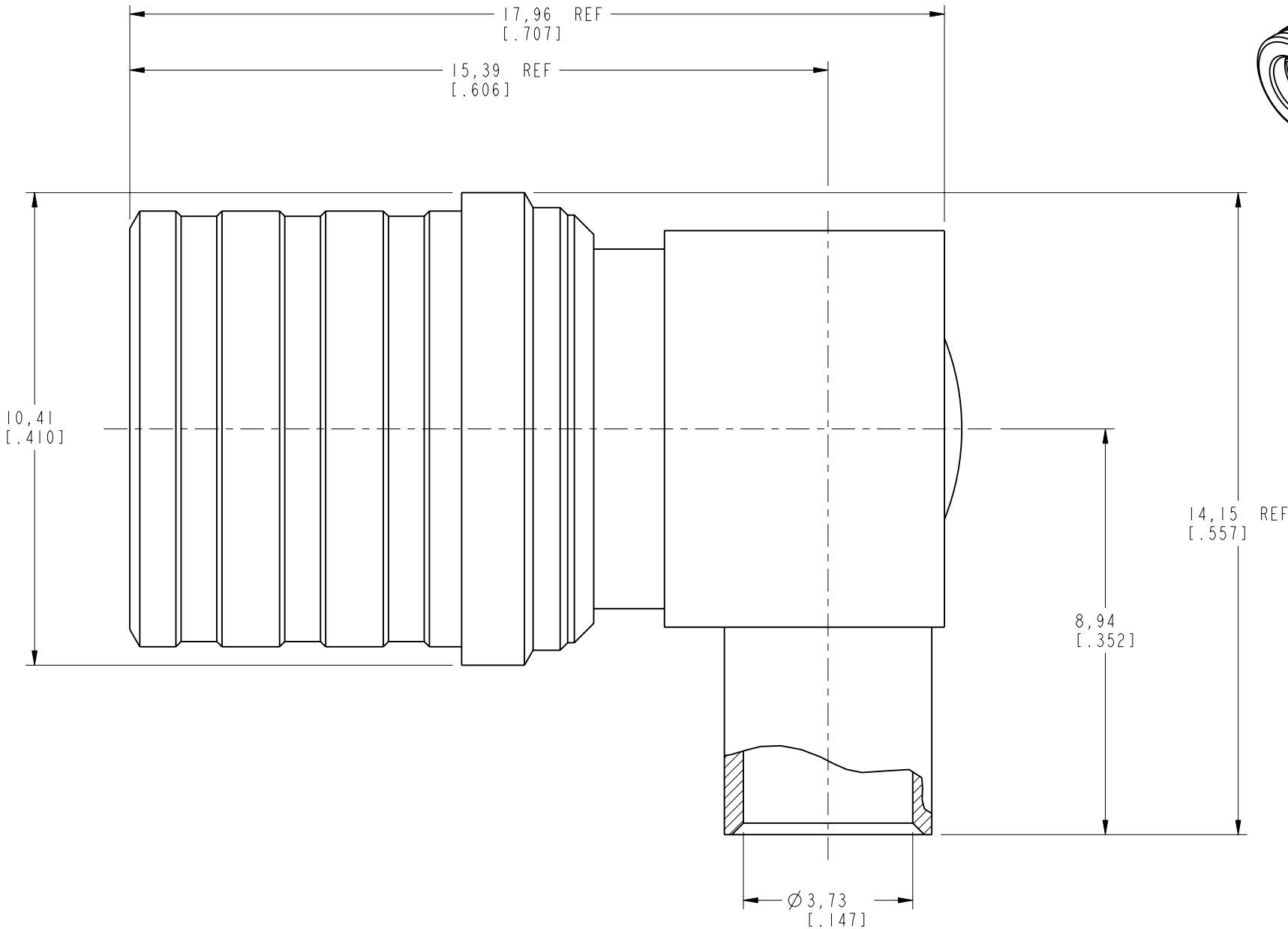
A. FREQUENCY RANGE = DC to 6 GHz
B. VSWR = 1.05 : 1 MAX. DC-3GHz
= 1.12 : 1 MAX. 3-6GHz
C. POWER HANDLING: 150 W (CONTINUOUS) @ 2.2 GHz AND 75°C MAX
AMBIENT TEMPERATURE HELD ON TEMPERATURE
CONTROLLED HEAT SINK
400 W (PEAK)

4. CABLE ASSEMBLY INSTRUCTIONS PER:

A. TRIM CABLE AS SHOWN
B. INSERT CABLE INTO R/A ENTRY
C. SOLDER OUTER CONDUCTOR TO BODY
D. SOLDER CENTER CONDUCTOR TO CONTACT THROUGH ACCESS HOLE
E. DEPRESS EXPANSION CAP IN ACCESS HOLE
D. APPLY HEAT SHRINK AS REQUIRED



RECOMMENDED CABLE TRIM DIMENSIONS
SEMI-RIGID AND FLEX ALTERNATIVE
SCALE 3.000



SCALE 2.000

CUSTOMER OUTLINE DRAWING

ALL OTHER SHEETS ARE FOR INTERNAL USE ONLY

UNLESS OTHERWISE SPECIFIED, DIMENSIONS ARE IN METRIC AND TOLERANCES ARE: <0.5mm ± 0.05mm 0.5 - 6mm ±0.1mm 6 - 30mm ±0.2mm 30 - 120mm ± 0.3mm ANGLES ±1°	MATERIAL -	DRAWN R. MAO	DATE 29-Jul-11	TITLE QMA 50 OHM R/A PLUG FOR .141 SEMI-RIGID RG-402 TYPE CABLE SCALE: 8.0:1.0 SHEET 2 OF 2		Amphenol RF www.amphenolrf.com	
		ENGINEER G. ANTONINI	DATE 5-Mar-02				
NOTICE - These drawings, specifications, or other data (1) are, and remain the property of Amphenol corp. (2) must be returned upon request; and (3) are confidential and not to be disclosed to any person other than those to whom they are given by Amphenol Corp. the furnishing of these drawings, specifications, or other data by Amphenol Corp., or to any other person to anyone for any purpose is not to be regarded by implication or otherwise in any manner licensing, granting rights to permitting such holder or any other person to manufacture, use or sell any product, process or design, patented or otherwise, that may in any way be related to or disclosed by said drawings, specifications, or other data.	REFERENCE EAR# 554 GEN# ASSYM24_SMA	APPROVED S. HSIEH	DATE 29-Jul-11	DWG SIZE B		REV F	DRAWING NO. 930-103P-51A
	FINISH	I:\SMA\930-103P-51A					ITEM NO. 930-103P-51A
							PART NO. 930-103P-51A