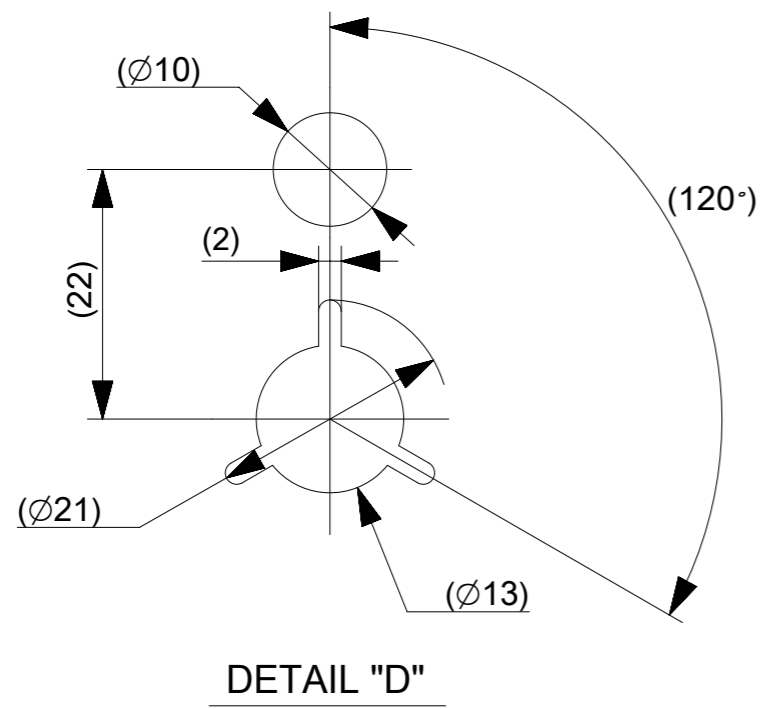
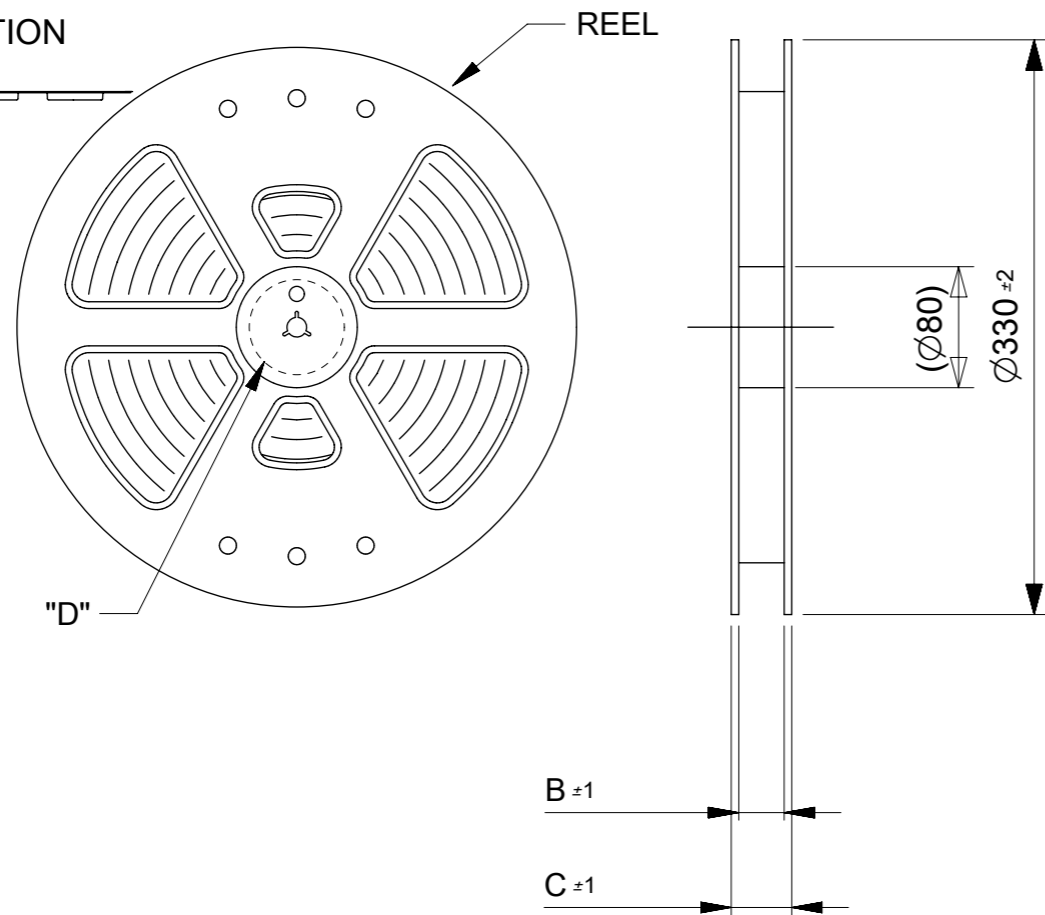
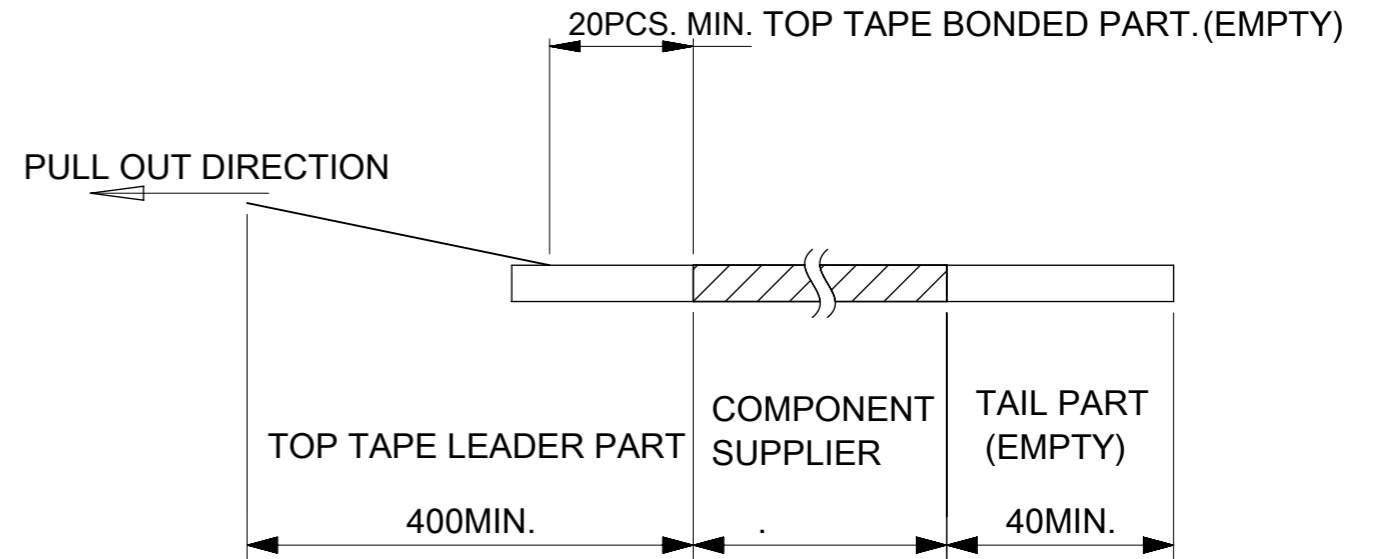


PULL OUT DIRECTION



NOTES

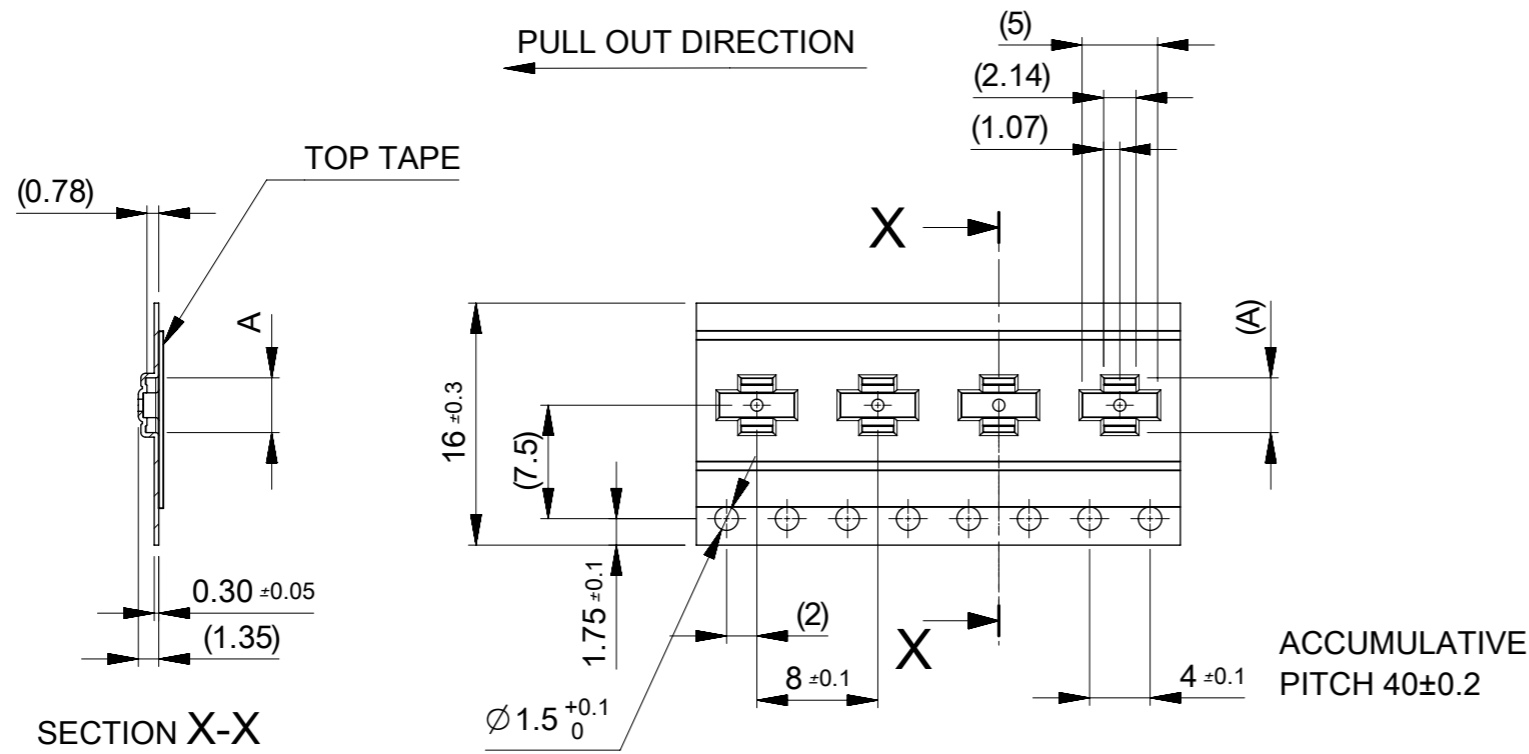
- RE DETAILED DIMENSION, SEE PRODUCT DRAWING.
- NUMBER OF CONNECTORS : 6000 PCS/REEL.
- LEAD TAPE LENGTH.



- TOP TAPE PEEL FORCE IS DEFINED BY IEC60286-3
- MATERIAL
CARRER TAPE :POLYSTYRENE
TOP TAPE :PET , OTHER
REEL :POLYSTYRENE(PS)(RECYCLE MATERIAL CONTAINED)
- ELV AND RoHS COMPLIANT

MODEL NO. 505066-**20

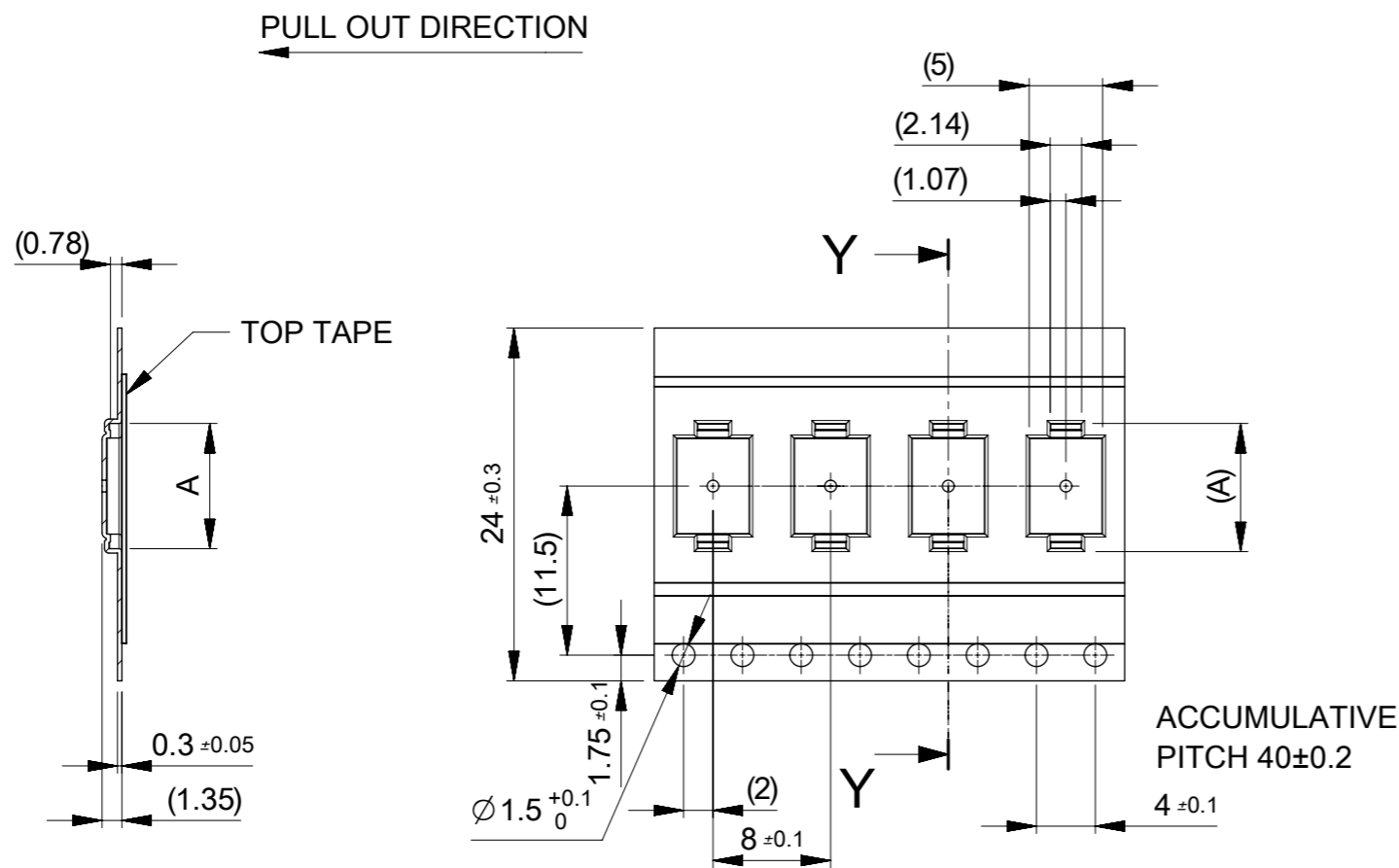
THIS DRAWING CONTAINS INFORMATION THAT IS PROPRIETARY TO MOLEX ELECTRONIC TECHNOLOGIES, LLC AND SHOULD NOT BE USED WITHOUT WRITTEN PERMISSION											
EC NO: 109660 DRWN: TSOMEYA CHK'D: KTANAKA03 APPR: TKUSUHARA01	2016/11/17 2016/12/01 2016/12/01	GENERAL TOLERANCES (UNLESS SPECIFIED)		DIMENSION UNITS	SCALE						
		ANGULAR TOL ± 1.0 °		MM	1:5						
		4 PLACES ± 0.01	3 PLACES ± 0.03	2 PLACES ± 0.05	1 PLACE ± 0.1	0 PLACES ± 0.2	DRWN BY	DATE	0.35 BB CONN. H=0.6 SSB6 RP REC ASSY		
		DRAFT WHERE APPLICABLE MUST REMAIN WITHIN DIMENSIONS					TSOMEYA	2016/11/17			
							CHK'D BY	DATE	PRODUCT CUSTOMER DRAWING		
					KTANAKA03	2016/12/01					
					APPR BY	DATE	SERIES: 505066 MATERIAL NUMBER: SEE CHART CUSTOMER: GENERAL				
					TKUSUHARA01	2016/12/01					
					DRAWING SIZE	THIRD ANGLE PROJECTION	DOCUMENT NUMBER: 5050660000 DOC TYPE: PSD DOC PART: 001 SHEET NUMBER: 1 OF 3				
					A3						



16	21.4	17.4	7.82	505066-3020	○	---	30
			6.77	505066-2420	○	---	24
			6.42	505066-2220	○	---	22
			6.07	505066-2020	○	---	20
			5.72	505066-1820	---	---	18
			5.37	505066-1620	○	---	16
			5.02	505066-1420	○	---	14
			4.67	505066-1220	○	---	12
			4.32	505066-1020	○	---	10
			3.97	505066-0820	---	○	8
3.62	505066-0620	○	---	6			
キャリアテープ幅 CARRIER TAPE WIDTH	C	B	(A)	MATERIAL No.	HIGH VOL. TOOL	LOW VOL. TOOL	CIRCUIT
					SAMPLE PREPARATION		

THIS DRAWING CONTAINS INFORMATION THAT IS PROPRIETARY TO MOLEX ELECTRONIC TECHNOLOGIES, LLC AND SHOULD NOT BE USED WITHOUT WRITTEN PERMISSION

EC NO: 109660 DRWN: TSOMEYA CHK'D: KTANAKA03 APPR: TKUSUHARA01	2016/11/17	GENERAL TOLERANCES (UNLESS SPECIFIED) ANGULAR TOL ± 1.0 ° 4 PLACES ± 0.01 3 PLACES ± 0.03 2 PLACES ± 0.05 1 PLACE ± 0.1 0 PLACES ± 0.2	DIMENSION UNITS	SCALE				
	2016/12/01		MM	2:1				
	2016/12/01		DRWN BY	DATE		TSOMEYA 2016/11/17		
			CHK'D BY	DATE		KTANAKA03 2016/12/01		
			APPR BY	DATE		TKUSUHARA01 2016/12/01		
RELEASED		DRAFT WHERE APPLICABLE MUST REMAIN WITHIN DIMENSIONS	DRAWING SIZE	THIRD ANGLE PROJECTION	PRODUCT CUSTOMER DRAWING			
A			A3		SERIES	MATERIAL NUMBER	CUSTOMER	
					505066	SEE CHART	GENERAL	
					DOCUMENT NUMBER	DOC TYPE	DOC PART	SHEET NUMBER
					5050660000	PSD	001	2 OF 3

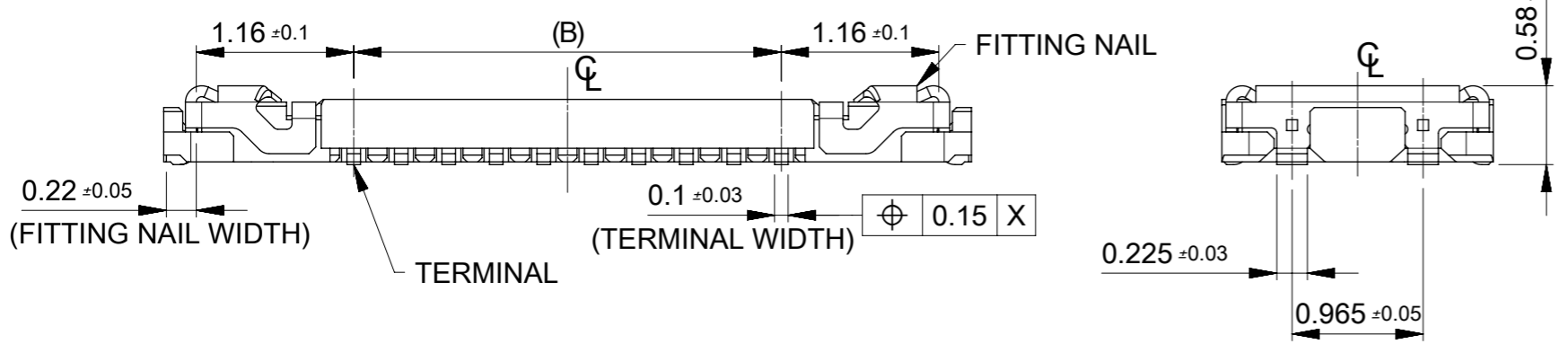
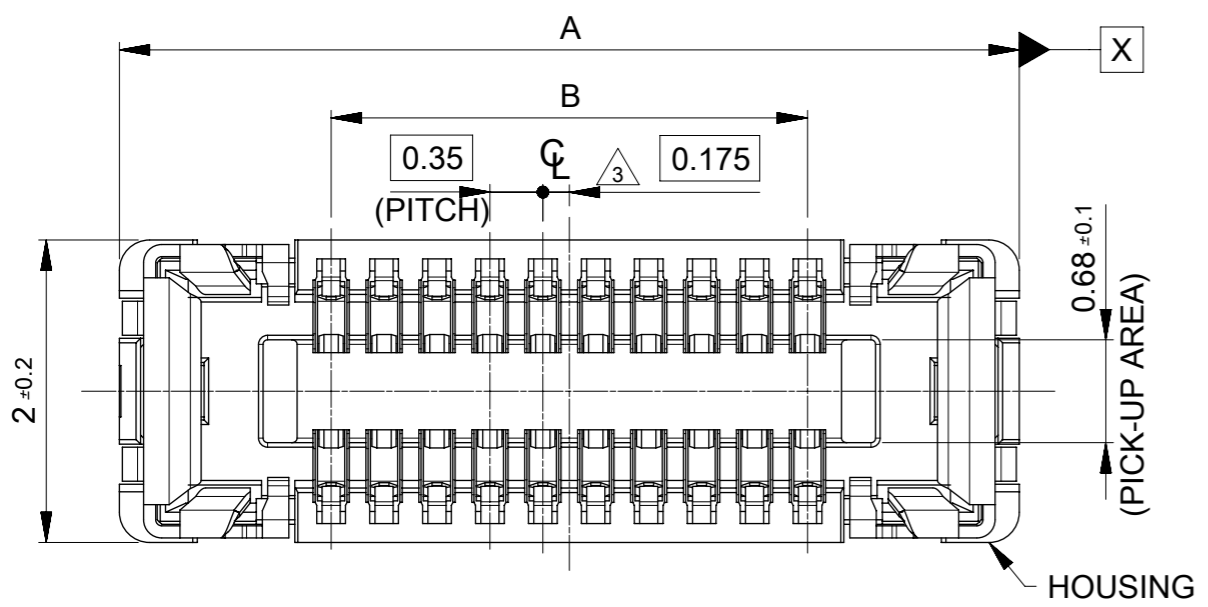


SECTION Y-Y

24	29.4	25.4	13.77	505066-6420	---	---	64
			13.07	505066-6020	---	---	60
			12.02	505066-5420	○	---	54
			11.32	505066-5020	○	---	50
			10.99	505066-4820	○	---	48
			10.62	505066-4620	---	---	46
			9.92	505066-4220	○	---	42
			9.57	505066-4020	○	---	40
			8.52	505066-3420	○	---	34
キャリアテープ幅 CARRIER TAPE WIDTH	C	B	(A)	MATERIAL No.	HIGH VOL TOOL	LOW VOL TOOL	CIRCUIT
SAMPLE PREPARATION							

THIS DRAWING CONTAINS INFORMATION THAT IS PROPRIETARY TO MOLEX ELECTRONIC TECHNOLOGIES, LLC AND SHOULD NOT BE USED WITHOUT WRITTEN PERMISSION

EC NO: 109660 DRWN: TSOMEYA CHK'D: KTANAKA03 APPR: TKUSUHARA01	2016/11/17	GENERAL TOLERANCES (UNLESS SPECIFIED)	DIMENSION UNITS	SCALE				
	2016/12/01	ANGULAR TOL ± 1.0 °	MM	2:1				
	2016/12/01	4 PLACES ± 0.01	DRWN BY	DATE		0.35 BB CONN. H=0.6 SSB6 RP REC ASSY		
		3 PLACES ± 0.03	TSOMEYA	2016/11/17				
		2 PLACES ± 0.05	CHK'D BY	DATE		PRODUCT CUSTOMER DRAWING		
		1 PLACE ± 0.1	KTANAKA03	2016/12/01				
	0 PLACES ± 0.2	APPR BY	DATE	SERIES	MATERIAL NUMBER	CUSTOMER		
				TKUSUHARA01	2016/12/01	505066	SEE CHART	GENERAL
		DRAFT WHERE APPLICABLE MUST REMAIN WITHIN DIMENSIONS	DRAWING SIZE	THIRD ANGLE PROJECTION	DOCUMENT NUMBER	DOC TYPE	DOC PART	SHEET NUMBER
			A3		5050660000	PSD	001	3 OF 3



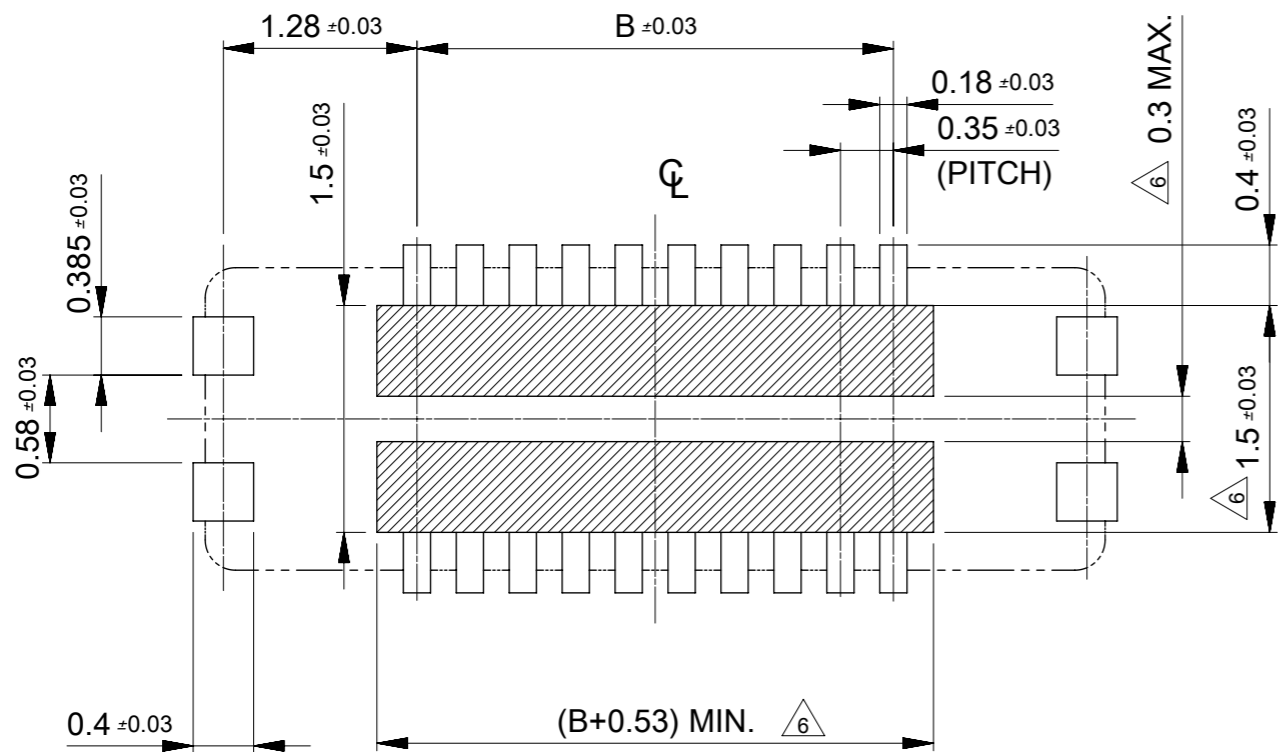
NOTES

- 1 MATERIAL
 WAFER: LIQUID CRYSTAL POLYMER UL94V-0 (COLOR: BLACK)
 TERMINAL: COPPER ALLOY
 FITTING NAIL: COPPER ALLOY
- 2 PLATING
 TERMINAL:
 CONTACT AREA: SEPARATED GOLD PLATING (0.1 MICROMETER MINIMUM).
 SOLDER TAIL AREA: SEPARATED GOLD PLATING.
 UNDERPLATE: NICKEL OVERALL.
 *DIVIDE INTO PARTS THE GOLD PLATING OF THE CONTACT AND THE TAIL PART BY THE NICKEL PLATING.
 FITTING NAIL:
 CONTACT AREA: SEPARATED GOLD PLATING (0.1 MICROMETER MINIMUM).
 SOLDER TAIL AREA: SEPARATED GOLD PLATING.
 UNDERPLATE: NICKEL OVERALL.
 *DIVIDE INTO PARTS THE GOLD PLATING OF THE CONTACT AND THE TAIL PART BY THE NICKEL PLATING.
 *EVEN THOUGH GOLD PLATING ON THE TOP SURFACE OF NAIL MIGHT BE THIN, NO FUNCTIONAL PROBLEM.
- 3 APPLY FOR (CIRCUIT/2)=EVEN.
- 4 MATE WITH : 505070-**10/505070-**20
- 5 TAIL AND FITTING NAIL COPLANARITY TO BE 0.08 MAXIMUM.
- 6 PROHIBITED AREA OF PATTERN WIRING AND SOLDER.
 (FOR EACH AREA, THE WIRING THAT TOUCHES ON THE SOLDER CAN BE ATTACHED, THEN COVERED WITH A FILM TO KEEP SOLDER OUT).
- 7 ELV and RoHS COMPLIANT.

11.90	14.70	505066-7020	---	---	70
10.85	13.65	505066-6420	---	---	64
10.15	12.95	505066-6020	---	---	60
9.80	12.60	505066-5820	---	---	58
9.10	11.90	505066-5420	○	---	54
8.40	11.20	505066-5020	○	---	50
8.05	10.85	505066-4820	○	---	48
7.70	10.50	505066-4620	---	---	46
7.00	9.80	505066-4220	○	---	42
6.65	9.45	505066-4020	○	---	40
6.30	9.10	505066-3820	---	---	38
5.60	8.40	505066-3420	○	---	34
4.90	7.70	505066-3020	○	---	30
3.85	6.65	505066-2420	○	---	24
3.50	6.30	505066-2220	○	---	22
3.15	5.95	505066-2020	○	---	20
2.80	5.60	505066-1820	---	---	18
2.45	5.25	505066-1620	○	---	16
2.10	4.90	505066-1420	○	---	14
1.75	4.55	505066-1220	○	---	12
1.40	4.20	505066-1020	○	---	10
1.05	3.85	505066-0820	---	○	8
0.70	3.50	505066-0620	○	---	6
B	A	EMBOSSED TAPE PACKAGE	HIGH VOL. TOOL	LOW VOL. TOOL	CIRCUIT
		ORDER NO.	SAMPLE PREPARATION ○ : TOOLED △ : WORK IN PROCESS --- : TOOLING TO BE CONFIRMED		
CONNECTOR SERIES No. : 505066-**09					

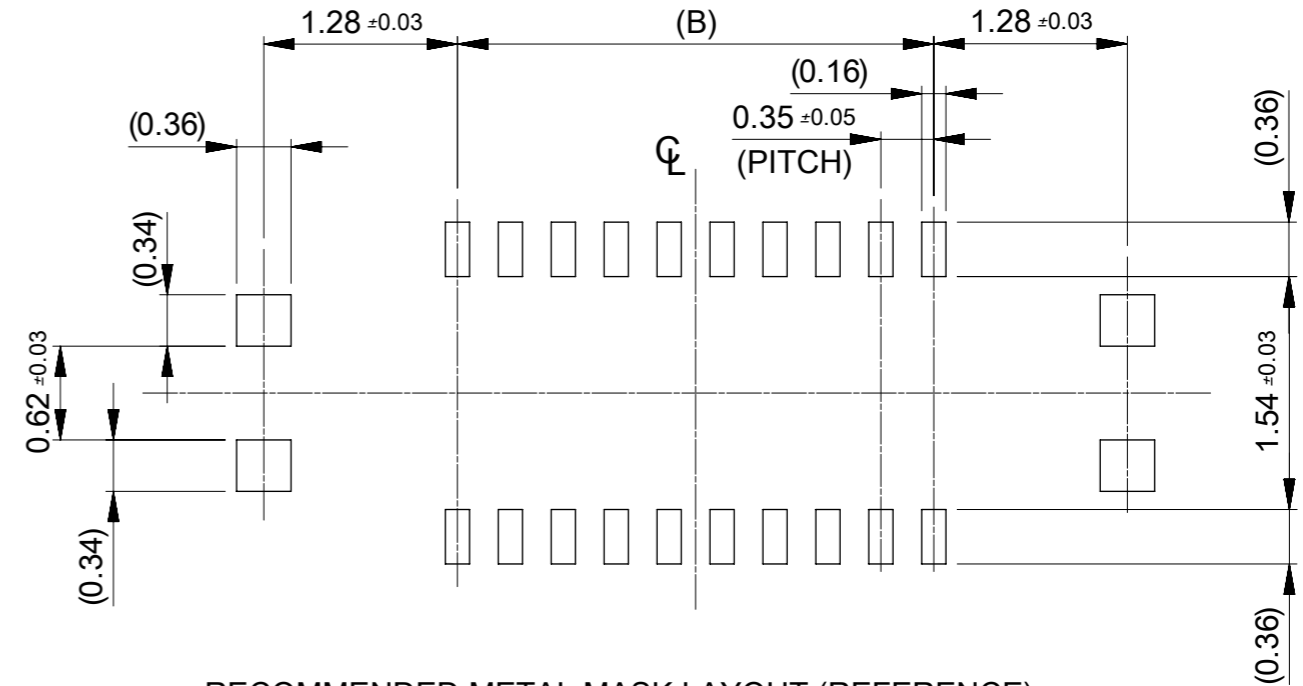
THIS DRAWING CONTAINS INFORMATION THAT IS PROPRIETARY TO MOLEX ELECTRONIC TECHNOLOGIES, LLC AND SHOULD NOT BE USED WITHOUT WRITTEN PERMISSION

REVISED	2016/12/06	DRWN: TSOMEYA	GENERAL TOLERANCES (UNLESS SPECIFIED)	DIMENSION UNITS	SCALE			
	2016/12/06	CHK'D: TASAKAWA		MM	20:1			
	2016/12/06	APPR: TKUSUHARA01		ANGULAR TOL ± 1.0 °	DRWN BY		DATE	
	EC NO: 111141	REV		4 PLACES	± 0.001		TSOMEYA	2016/06/21
				3 PLACES	± 0.003		CHK'D BY	DATE
2 PLACES			± 0.03	KTANAKA03	2016/12/01			
1 PLACE			± 0.1	APPR BY	DATE			
		0 PLACES	± 0.2	TKUSUHARA01	2016/12/01			
DRAFT WHERE APPLICABLE MUST REMAIN WITHIN DIMENSIONS				DRAWING SIZE	THIRD ANGLE PROJECTION	0.35 BB CONN. H=0.6 SSB6 RP REC ASSY PRODUCT CUSTOMER DRAWING		
A3				SERIES	MATERIAL NUMBER	CUSTOMER		
B				505066	SEE CHART	GENERAL		
				DOCUMENT NUMBER	DOC TYPE	DOC PART		
				5050661000	PSD	001		
				SHEET NUMBER		1 OF 2		



RECOMMENDED P.W. BOARD PATTERN LAYOUT (REFERENCE)

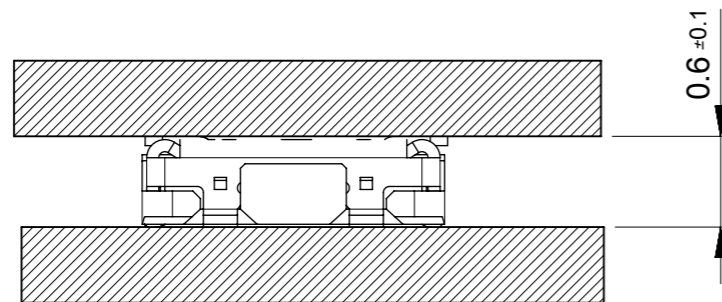
△ PROHIBITED AREA OF PATTERN WIRING AND SOLDER
 (FOR EACH AREA, THE WIRING THAT TOUCHES ON THE SOLDER CAN BE ATTACHED, THEN COVERED WITH A FILM TO KEEP SOLDER OUT)



RECOMMENDED METAL MASK LAYOUT (REFERENCE)

RECOMMENDED THICKNESS OF METAL MASK : t=0.08mm

RECOMMENDED OPEN APERTURE RATIO OF METAL MASK : 80%



MATED CONDITION

THIS DRAWING CONTAINS INFORMATION THAT IS PROPRIETARY TO MOLEX ELECTRONIC TECHNOLOGIES, LLC AND SHOULD NOT BE USED WITHOUT WRITTEN PERMISSION

REVISED	EC NO: 111141	2016/12/06	GENERAL TOLERANCES (UNLESS SPECIFIED)	DIMENSION UNITS	SCALE	molex®			
	DRWN: TSOMEYA	2016/12/06	ANGULAR TOL ± 1.0 °	MM	20:1				
	CHK'D: TASAKAWA	2016/12/06	4 PLACES ± 0.001	DRWN BY	DATE	PRODUCT CUSTOMER DRAWING			
	APPR: TKUSUHARA01		3 PLACES ± 0.003	TSOMEYA	2016/06/21				
			2 PLACES ± 0.03	CHK'D BY	DATE	505066	SEE CHART	GENERAL	
		1 PLACE ± 0.1	APPR BY	DATE	DOCUMENT NUMBER				
		0 PLACES ± 0.2	TKUSUHARA01	2016/12/01	5050661000				
		DRAFT WHERE APPLICABLE MUST REMAIN WITHIN DIMENSIONS	DRAWING SIZE	THIRD ANGLE PROJECTION	DOC TYPE				
			A3		PSD				
					DOC PART				
					001				
					SHEET NUMBER				
					2 OF 2				