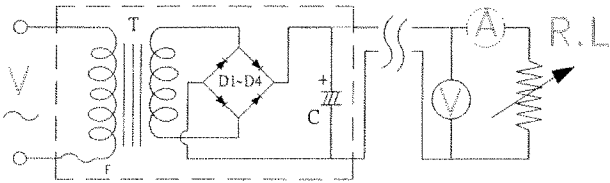
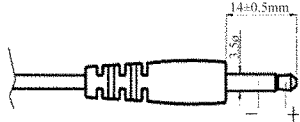
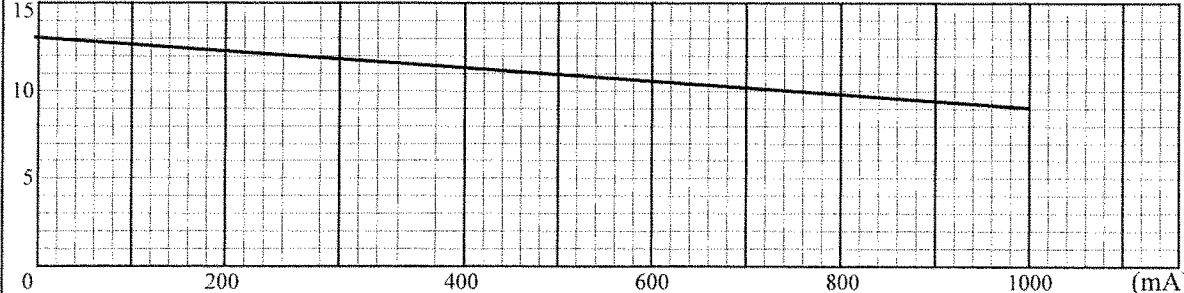
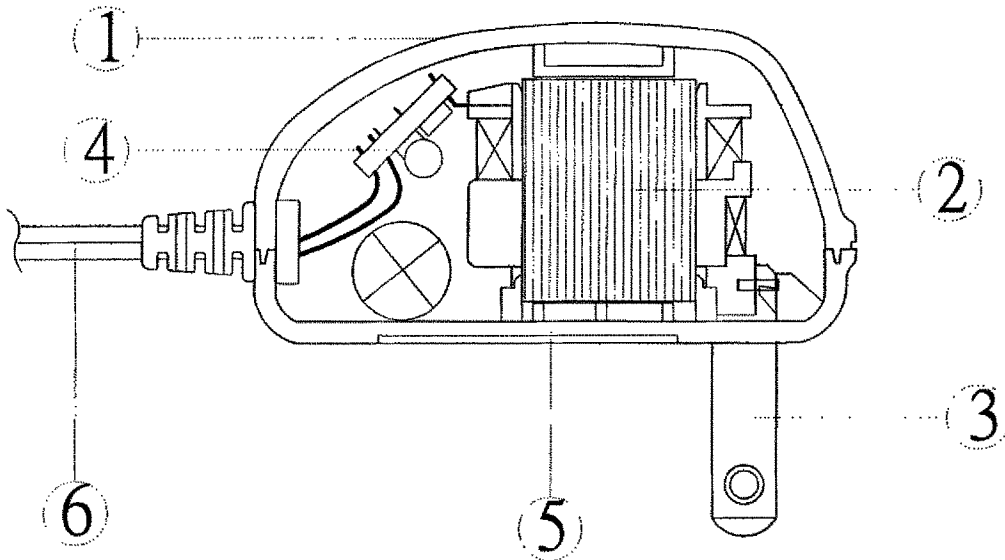


**TEST DATA**

ITEM	SPEC	SAMPLE									
		1	2	3	4	5	6	7	8	9	10
Primary Exciting Current Input 120 VAC , 60 Hz	90 mA max	50	44	47							
Primary Load Current Input 120 VAC , 60 Hz	190 mA max	142	140	143							
Secondary No Load DC Voltage	13V ±5%	13.27	13.26	13.27							
Secondary DC Voltage Load 1000 mA	9V ±5%	9.2	9.1	9.12							
Secondary Voltage Load mA	V ± %										
Secondary Voltage Load mA	V ± %										
Secondary Voltage Load mA	V ± %										
Secondary Voltage Load mA	V ± %										
Ripple Voltage Load 1000 mA (PK-PK)	2.5V max	1.7	1.7	1.7							
Hi-Pot Test 3 mA for 3Sec.	Pri. to Sec.	4K VAC	OK	OK	OK						
	Pri. to Core	4K VAC	OK	OK	OK						
	Sec. to Core	3K VAC	OK	OK	OK						
Temperature Rise: 70°C MAX measured By Resistance Method (Primary Winding)											
Core Film: SPLIT						Core : EI-48					
Testing Circuit:		2200uF/16V				Output Plug Drawing: PLUG:3.5*14mm					
											
Output conductor length: 6 ft min (AWG#22 )											
Input conductor length: ft min (AWG# )											
<p>(V)</p> <p style="text-align: center;"><b>Characteristic Curve</b></p>  <p style="text-align: right;">(mA)</p>											

## AC Adaptor Specifications

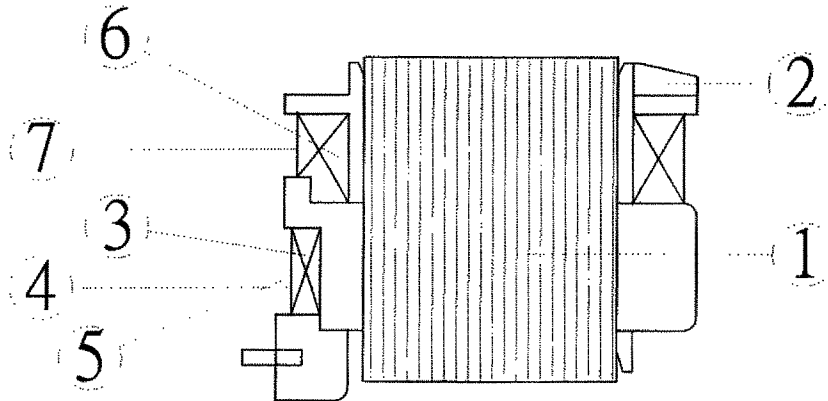
### Internal Construction Drawing and Parts List (Unit: Set or EA)



Part Name	Specification	Q'ty
1. Enclosure	Noryl SE1 94V-1 105°C	
	Noryl SE-100 94V-1 85°C	
	Noryl PX1700 94V-1 80°C	
	940(f1) 94V-0 130°C	
	5172	
2. Transformer	EI-41	1
3. Blade	Ni plated brass	2
<b>4. Print Wiring Board Assembly</b>		
Print Wiring Board	04V0 94V-0 130°C	1
	11 94V-0 105°C	
	13 94V-0 130°C	
	BF-3 94V-0 130°C	
Diode	1A 40V IN5819	4
Capacitor	2200uf 16V 85°C	1
5. Name Plate	Polyester Film	1
6. Output Cord	AWG# 22 6FT min	1

## AC Adaptor Specifications

### Construction Drawing and Details of Transformer

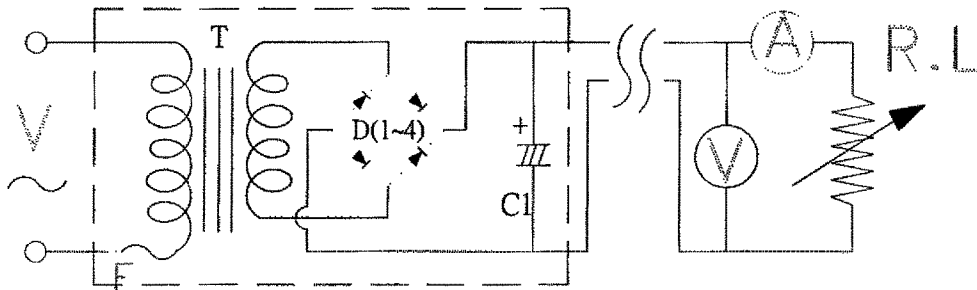


Part Name	Material & Type	Spec or Q'ty
1. Core	Silicon Steel	0.35mm
2. Bobbin	Polybutylene Terephthalate 1403G6	0.71mm
	PETP(QMFZ2) FR-530, FR530L	
	Nylon 101L	
3. Primary Winding	Polyurethane Enameled Copper wire	mm turn ohm
4. Primary Outer Winding	Mylar Tape	0.025mmx2T
5. Thermal Fuse	M30 2A 125°C 250V AC	1PC
6. Secondary Winding	Polyurethane Enameled Copper Wire	mm turn ohm
7. Secondary Outer Winding	Mylar Tape	0.025mmx2T

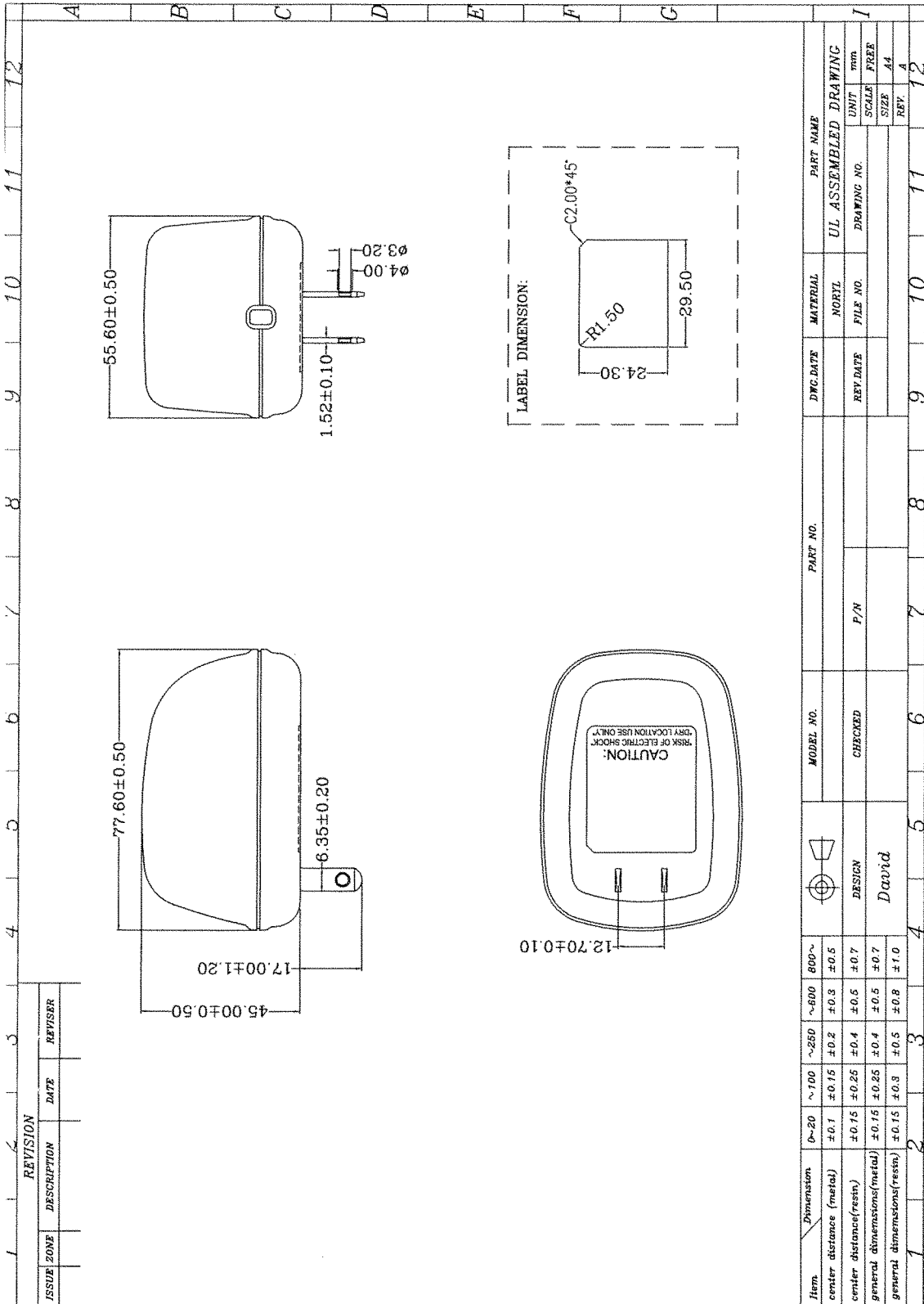
## AC Adaptor Specifications

---

### Circuit Diagram



Symbol	Part Name	Note
T	Transformer	EI-41
D(1-4)	Diode	1A 40V IN5819
C1	Capacitor	2200uF 16V 85°C
F	Thermal	125°C 2A 250V



## AC Adaptor Specifications

### Dimension of Nameplate (Unit:mm)

