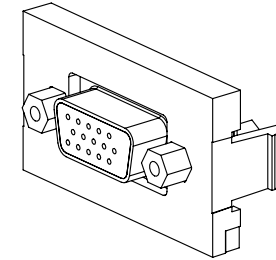
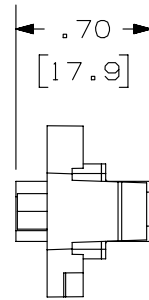
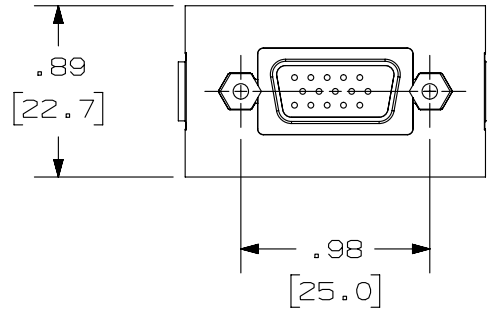
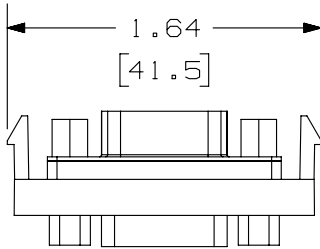


THIS COPY IS PROVIDED ON A RESTRICTED BASIS AND IS NOT TO BE USED IN ANY WAY DETRIMENTAL TO THE INTERESTS OF PANDUIT CORP.

	PANDUIT P/N	WEIGHT
A	CHD15HDC**	.28 LB/10 PCS (125.9 g/10 PCS)
B	IAPHD15HDCWH	

NOTES:

1. SEE CURRENT CATALOG FOR ADDITIONAL PART NUMBER SUFFIXES TO INDICATE COLOR AND OR PACKAGE QUANTITY.
2. SEE CATALOG FOR COMPLETE LIST OF PARTS APPLICABLE FOR USE WITH THIS PART.
3. DIMENSIONS IN PARENTHESES ARE IN METRIC.
4. PART TO WORK WITH ALL PANDUIT FACEPLATE FRAMES.



PART NUMBER		SEE TABLE	
TITLE			
C 15 PIN HIGH DENSITY SVGA 1/3 INSERT COUPLER			
CUSTOMER DRAWING			
ITEM REVISION NAME		M01095AB/02	
DATASET FILE NAME		M01095AB_DC07/02C	
UNLESS OTHERWISE SPECIFIED, DIMENSIONAL TOLERANCES ARE: IN [mm]		MATERIAL:	
.x ± .xxx ± .010 [.3]		DRAWING NUMBER:	
.xx ± .03 [.8]		01095-07	
ANGLES ±		THIRD ANGLE PROJECTION	
DRAWN BY		SCALE	
JSP		NONE	
DATE		SHT 1 OF 1	
1-26-01		A	
CHK		SIZE	
PBD		A	

REV	DATE	BY	CHK	APR	DESCRIPTION	ECN
3	7-31-14	BJN	JSP	MMR	C. REMOVED "MINI-COM" FROM TITLE D. UPDATD TITLE BLOCK	01095-07
2	6-6-11	BJN	JSP	JSP	B. ADDED SUPPLEMENTAL P/N IAPHD9CWH	01095-07
1	2-16-01	JSP	PBD	PBD	A. ADDED "C" TO PART NO.	01095-07
R	1-26-01	JSP	PBD	PBD	RELEASED TO PRODUCTION	01095-07

D10100DA/14