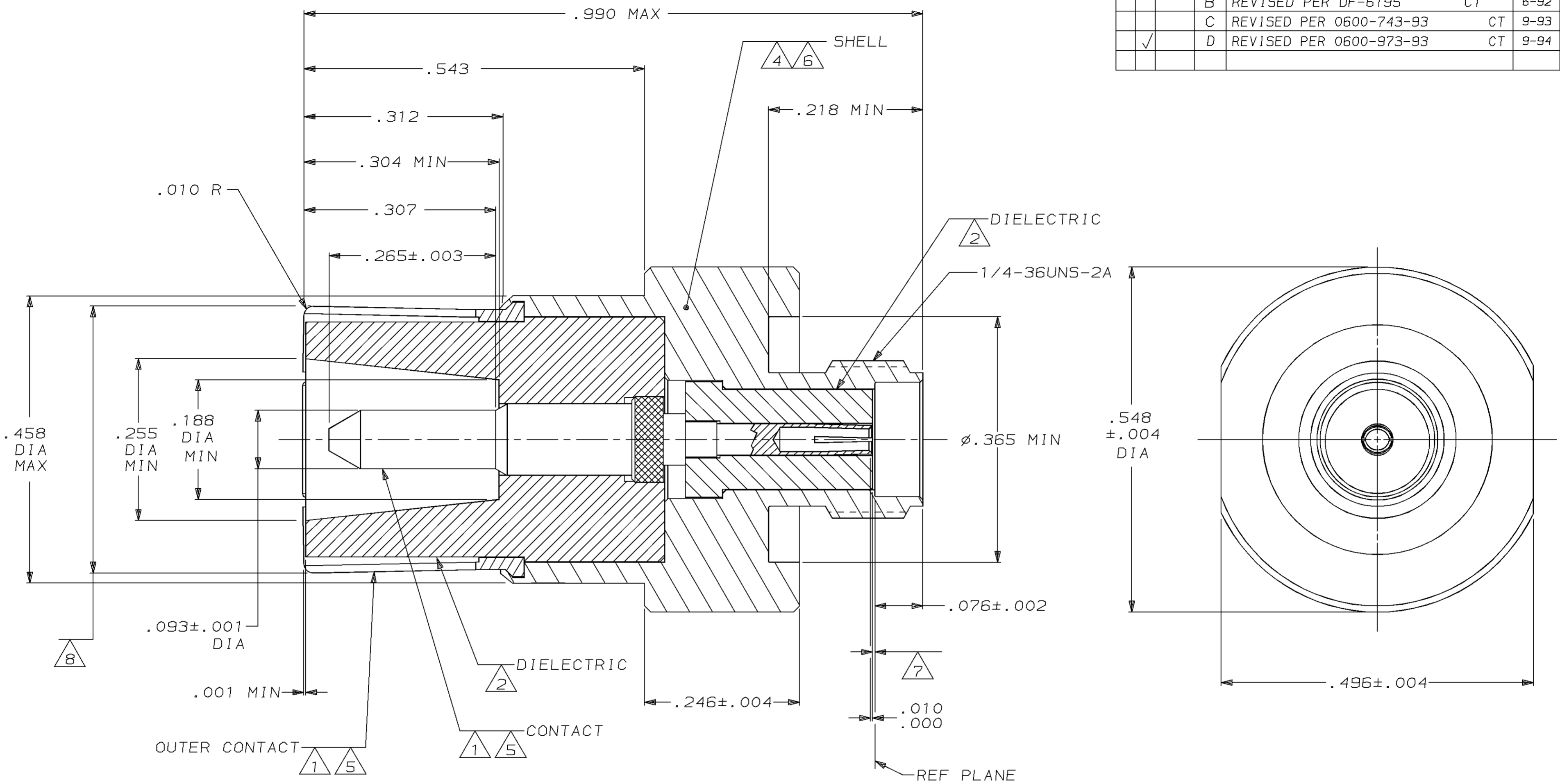


REVISIONS				
ZONE	LTR	DESCRIPTION	DATE	APPD
	O	NPR 90-0063 WAS 89-3321-004	2-9-90	PY
	A	REVISED PER DF4725	4-12-91	RCH
	B	REVISED PER DF-6195 CT	6-92	BS
	C	REVISED PER 0600-743-93 CT	9-93	CS
✓	D	REVISED PER 0600-973-93 CT	9-94	JC



- ① BERYLLIUM COPPER PER ASTM-B-196
- ② PTFE PER ASTM-D-1710
- ~~③ BRASS PER QQ-B-626~~
- ④ STAINLESS STEEL PER ASTM-A-582
- ⑤ GOLD PL PER MIL-G-45204
- ⑥ PASSIVATED PER QQ-P-35
- ⑦ DIELECTRIC, MAX PROJECTION .002, .010 MAX RECESSION
- ⑧ FLARE TO MEET OUTER CONTACT GAGE TEST PER MIL-C-39012/15

DO NOT SCALE PRINT. UNLESS SPECIFIED DIMENSIONS IN INCHES TOLERANCES ON : 2 PLC DEC ± - 3 PLC DEC ± .005 ANGLES ± -		DR 2-1-90 P. YEAGER		446748-1 PART NO	
MATERIAL ① THRU ④		CHK 2-2-90 J. CABARLO		AMP   AMP INCORPORATED Harrisburg, Pa. 17105	
FINISH ⑤ ⑥		APPD 2-2-90 J. CABARLO			
APPLICATION SPEC -		APPD 2-2-90 P. YEAGER		NAME COAX PIN ADAPTER, SIZE 1 MODIFIED	
WEIGHT -		PRODUCT SPEC -		DRAWING NO 446748	
		APPLIC. SPEC -		SIZE C	
		SCALE 8:1		FSCM NO 00779	
		SHEET 1 OF 1		DRAWING NO 446748	