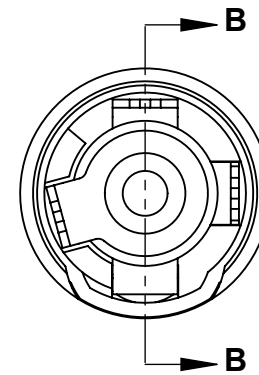
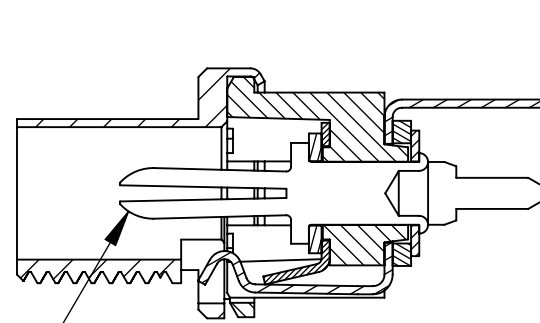


Ø 0.10" (2.5 mm)
CENTER PIN REF

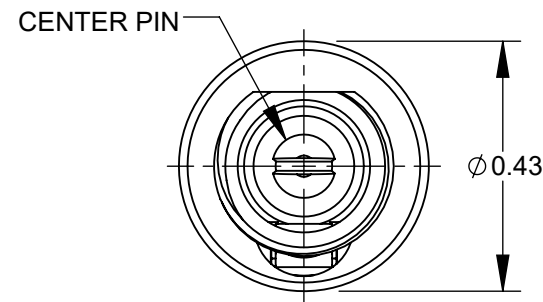
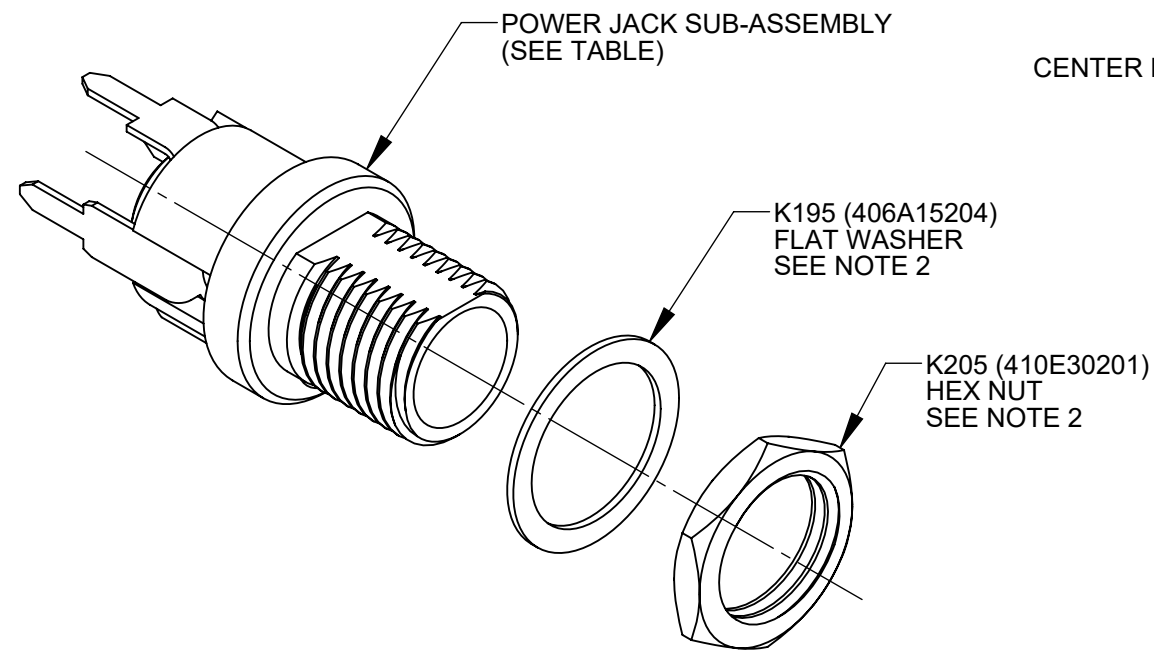
PCL712AH



Ø 0.080" (2.0 mm)
CENTER PIN REF

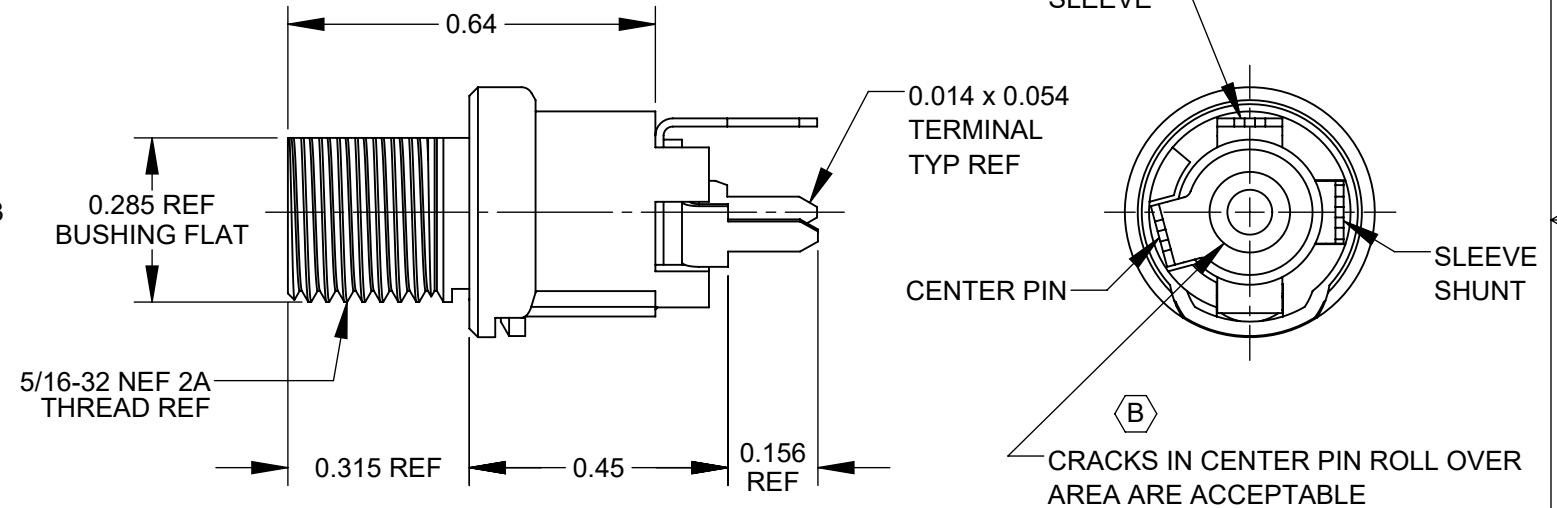
PCL722AH

PART NUMBER	PART REV	POWER JACK SUB-ASSEMBLY	JACK SIZE REF
PCL712AH	B	730D672	0.10" (2.5 mm)
PCL722AH	B	730D673	0.080" (2.0 mm)



CENTER PIN

Ø 0.43



0.64
0.285 REF BUSHING FLAT
5/16-32 NEF 2A THREAD REF
0.315 REF
0.45
0.156 REF

SLEEVE

0.014 x 0.054
TERMINAL
TYP REF

CENTER PIN

SLEEVE SHUNT

CRACKS IN CENTER PIN ROLL OVER AREA ARE ACCEPTABLE

NOTES:

1. SELECT POWER JACK SUB-ASSEMBLY PER TABLE.
2. HEX NUT AND FLAT WASHER SUPPLIED UNASSEMBLED
3. PACK 100 PCS /CARTON
4. THESE PRODUCTS ARE RoHS COMPLIANT

REV	ECO NUMBER	DATE	BY	APVD
B	28397	06/11/21	PC	TJK
A	27941	09/06/17	PC	TJK
REVISIONS				

- ☆ STAR SYMBOL DENOTES CRITICAL DIMENSION
- UNLESS OTHERWISE SPECIFIED**
1. ALL DIMENSIONS IN INCHES
 - TWO PLACE DECIMALS ±0.01
 - THREE PLACE DECIMALS ±0.005
 - ANGLES ±1°
 - ALL DIA. CONCENTRIC WITHIN 0.005 T.I.R.
 2. FEATURES ON THE SAME CENTERLINE MUST BE ALIGNED WITHIN ±0.002
 3. REMOVE ALL BURRS

THIS DRAWING DESCRIBES A DESIGN CONSIDERED PROPRIETARY IN NATURE, DEVELOPED AND MANUFACTURED BY SWITCHCRAFT INC. AND IS RELEASED ON A CONFIDENTIAL BASIS FOR IDENTIFICATION PURPOSES ONLY.

SIZE	WIDTH	MULT	LBS/M	TEMPER
FINISH		MATERIAL		
SPEC No.		SPEC No.		
FIRST USED ON		SCALE		
		3:1		
DATE DRAWN	BY	CHKD	APVD	
6/21/16	PNK	PNK	SRC	
			6/21/16	6/21/16
NAME			PART No.	REV
HT POWER JACKS			PCL712AH PCL722AH	B
LONG BUSHING STRAIGHT PC, RoHS				

DO NOT SCALE DRAWING

SolidWorks CAD File

ROUTING