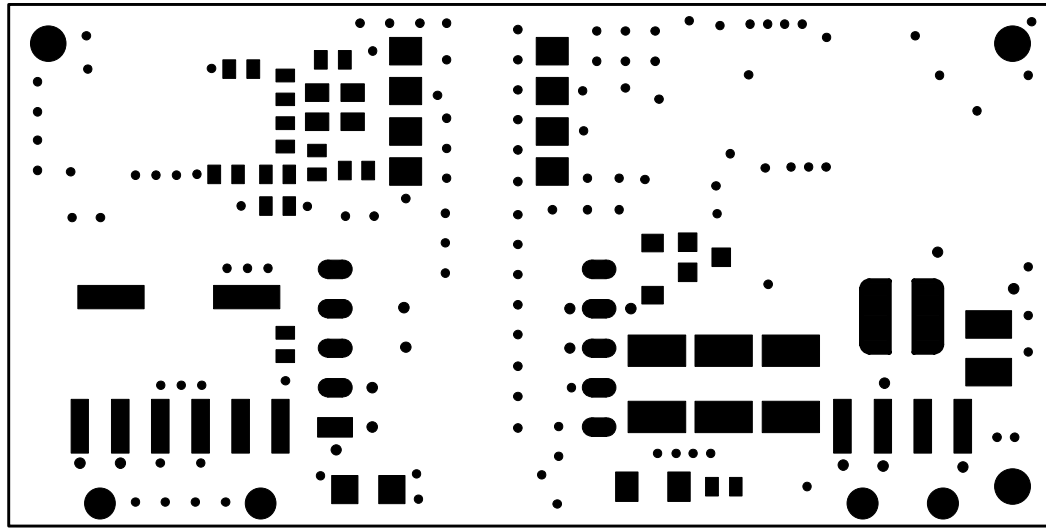
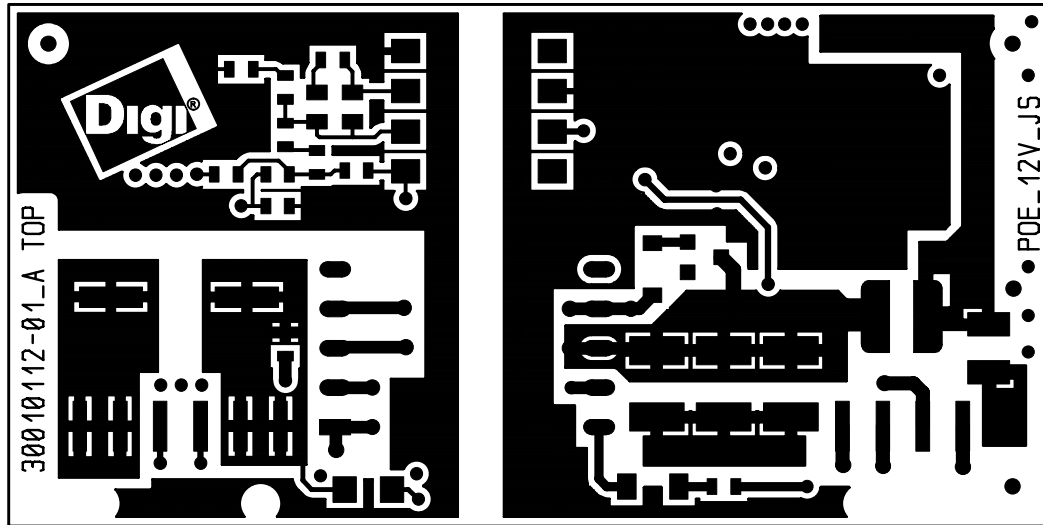


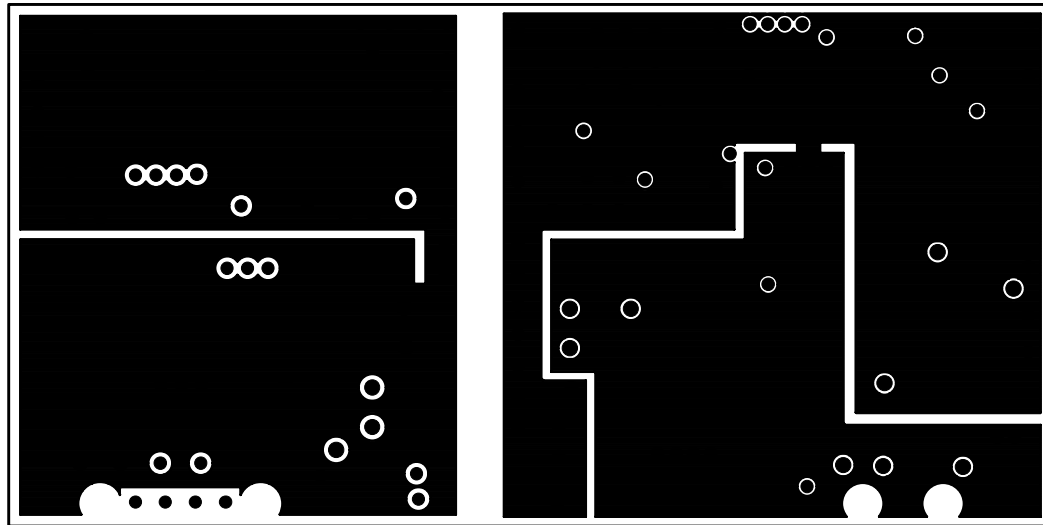
POE\_12V\_JS Paste TOP  
09.10.08



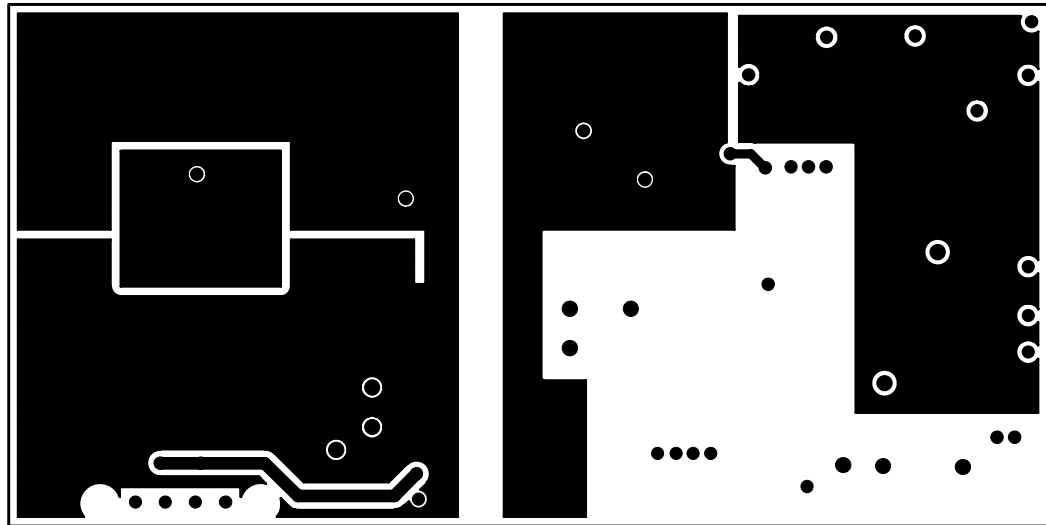
POE\_12V\_JS Solder Mask TOP  
09.10.08



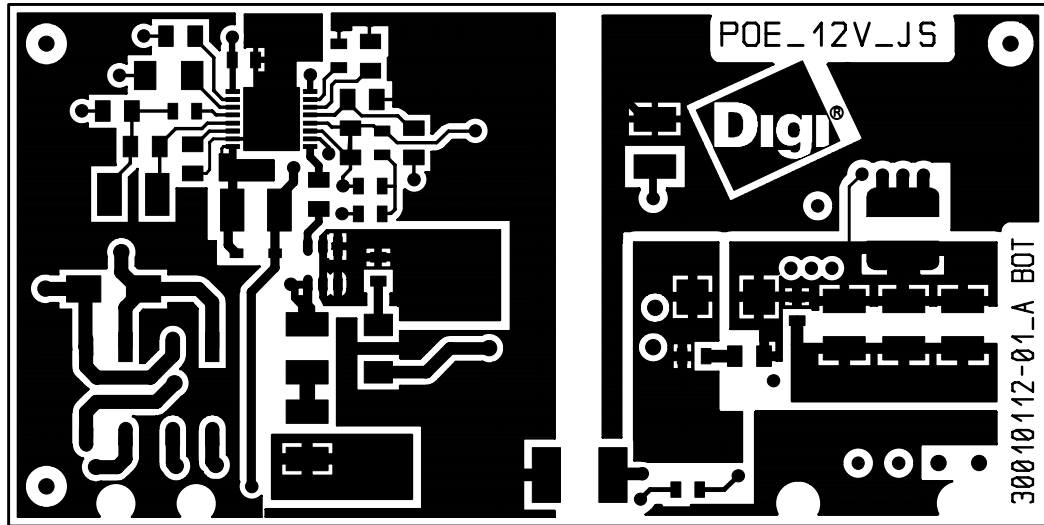
POE\_12V\_JS Layer 1 TOP  
09.10.08



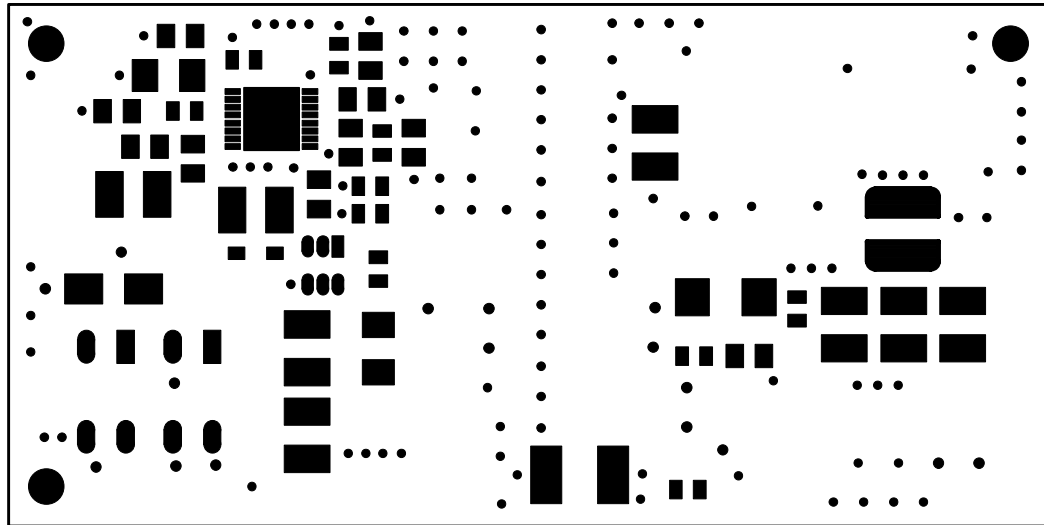
POE\_12V\_JS Layer2 GND  
09.10.08



POE\_12V\_JS Layer3 VCC/GND  
09.10.08

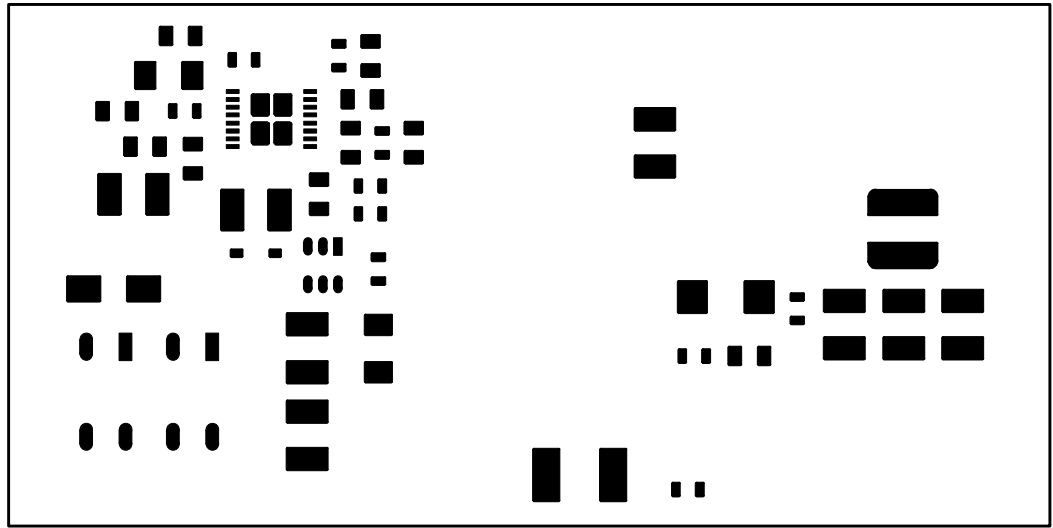


POE\_12V\_JS Layer 4 BOT  
09.10.08

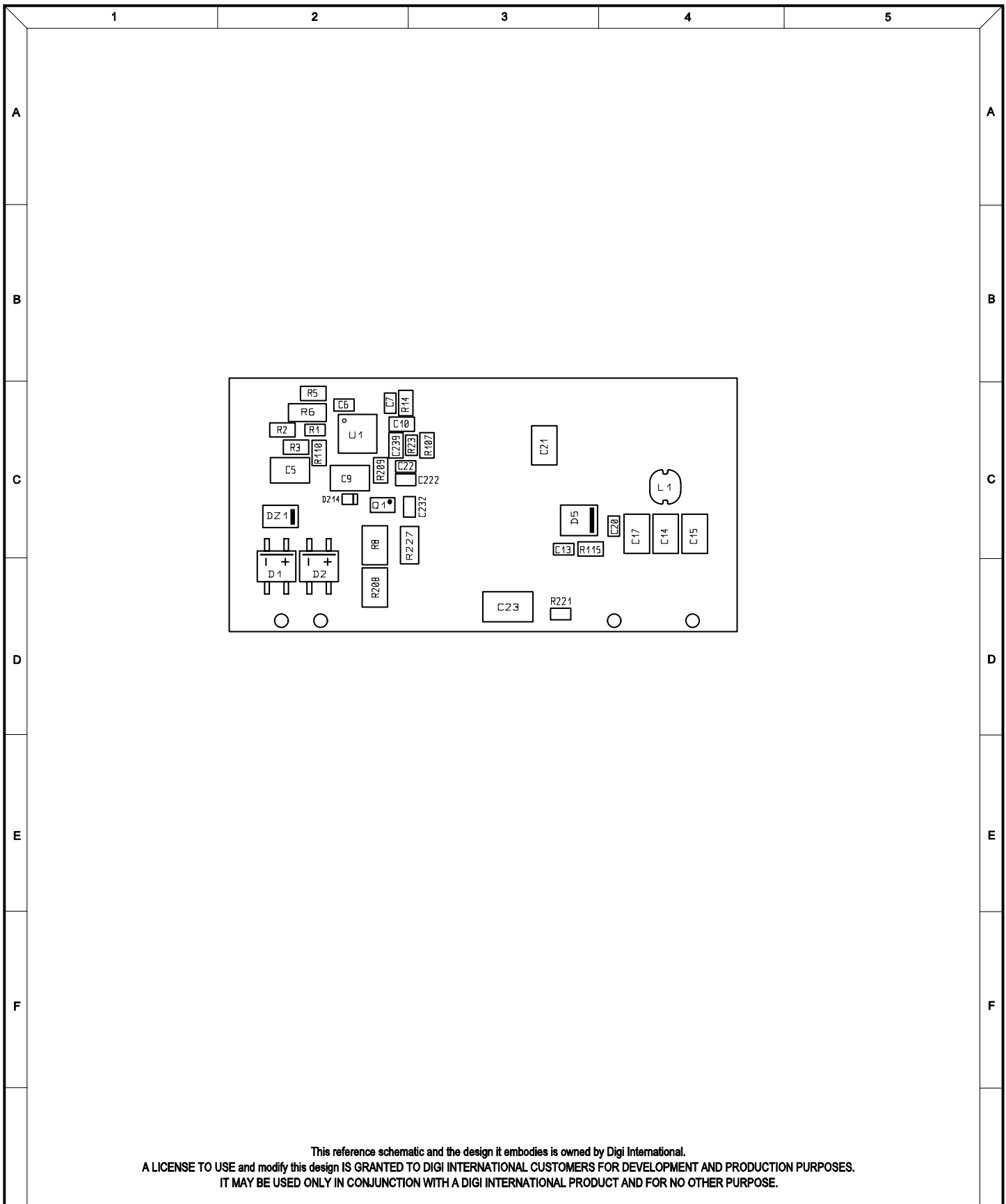


POE\_12V\_JS Solder Mask BOT  
09.10.08





POE\_12V\_JS Paste BOT  
09.10.08



This reference schematic and the design it embodies is owned by Digi International.  
 A LICENSE TO USE and modify this design IS GRANTED TO DIGI INTERNATIONAL CUSTOMERS FOR DEVELOPMENT AND PRODUCTION PURPOSES.  
 IT MAY BE USED ONLY IN CONJUNCTION WITH A DIGI INTERNATIONAL PRODUCT AND FOR NO OTHER PURPOSE.

Usable for:				Scale: 1.5		Filename: POE_12V_J5.pcb	
				<b>POE Application Kit</b> <small>Note: This layout version is for reference only. Some parts may not be equipped or may have different values.</small>			
				Designer	Date	Name	Title:  <b>Placement Bottom Side</b>
				Approved		SC	
				ISO			
							Partnumber:
							30010114-01 Rev A
							Sheet 2
							of 2
01	Initial Version	09.10.08	SC			Provided for:	Provided by:
Rev.	Modification	Date	Name				