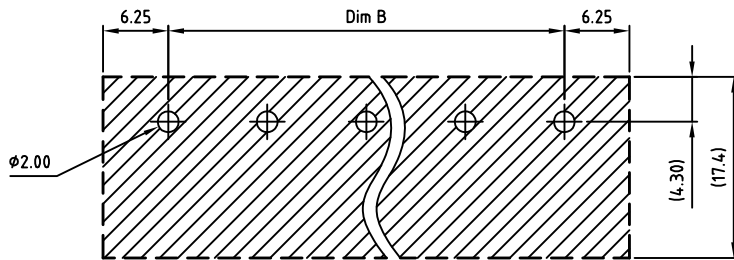
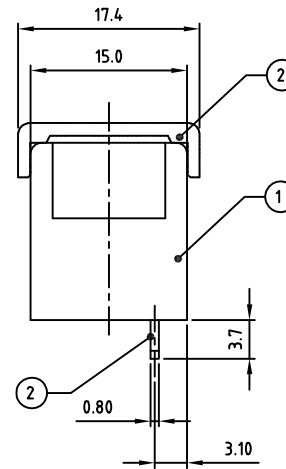
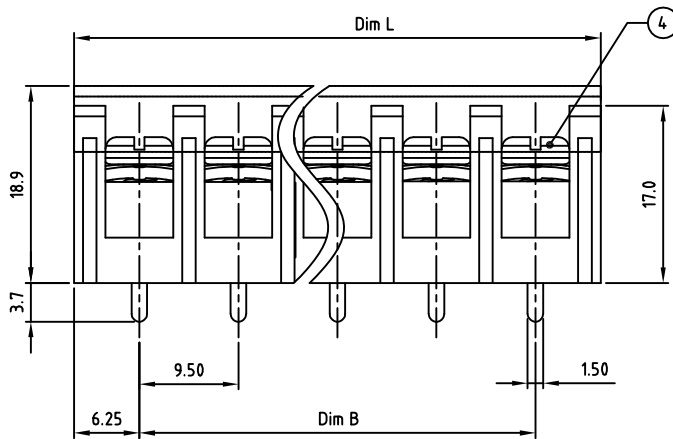
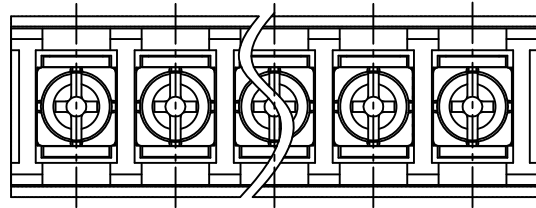


Transfer or duplication of this document as well as the utilisation or communication of its content are not permitted unless express consent is granted. Violations give rise to claims for damages. All rights reserved in case of patent, utility model or design patent registrations.



PCB LAYOUT

Technical data

- 1.Nominal voltage: 300V/20A  
PITCH: 9.5mm
- 2.Connection capacity:  
AWG 22-12
- 3.Insulation Withstanding Voltage:  
AC 2000V/MIN
- 4.Insulation Resistance:  
1000MΩ or more at DC500V
- 5.Tightening torque:  
13.8kgf.cm (1.38N.m)
- 6.Screw thread: M3.5
- 7.Operating temperature range:-40°C ~ 115°C  
Soldering temperature:250°C±10°C /5s
- 8.Undimensioned Tolerances:

Dim.L=P×9.5+3.0		
Dim.B=(P-1)×9.5		
P= number of poles		
	Dim B	Dim L
0-30mm	±0.15	±0.20
over 30mm-60mm	±0.20	±0.30
over 60mm-90mm	±0.25	±0.40
over 90mm-180mm	±0.30	±0.50
over 180mm	±0.50	±0.80

- 9.Safety approval:
- 10.RoHS Compliance

Part No.:

**OSTYK504XX230**

No. of Poles  
 02 2 Poles  
 03 3 Poles  
 ...  
 24 24 Poles

4	SCREW+WASHER	STEEL	M3.5×0.6, Ni Plated	3	
3	CONTACT	BRASS	M3.5×0.6, Tin PLATED	3	
2	COVER	PC UL94V-1		1	
1	BODY	PA66 UL94V-0	Black	1	
ITEM	NAME OF PART	MATERIAL	NOTES	Q"TY	
DWG	WF. Zhang	DATE 2017.09.08	UNITS: MM	SHEET: 1 OF 1	Tolerance
CHK.	WF. Zhang	DATE 2017.11.27	SCALE: NONE 2:1 (:)	REV: A	X. ±0.50
APP.		DATE	TITLE: OSTYK Series W/O Flange & W/Cover		X.X ±0.30
			PART NO. OSTYK504XX230		X.XX ±0.10
			DWG NO. OSTYK504XX230.dwg		X° ±1°

△				
SIGN	DESCRIPTION	CHK.	DATE	



ON-SHORE TECHNOLOGY, INC.