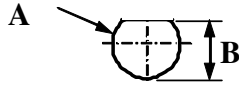
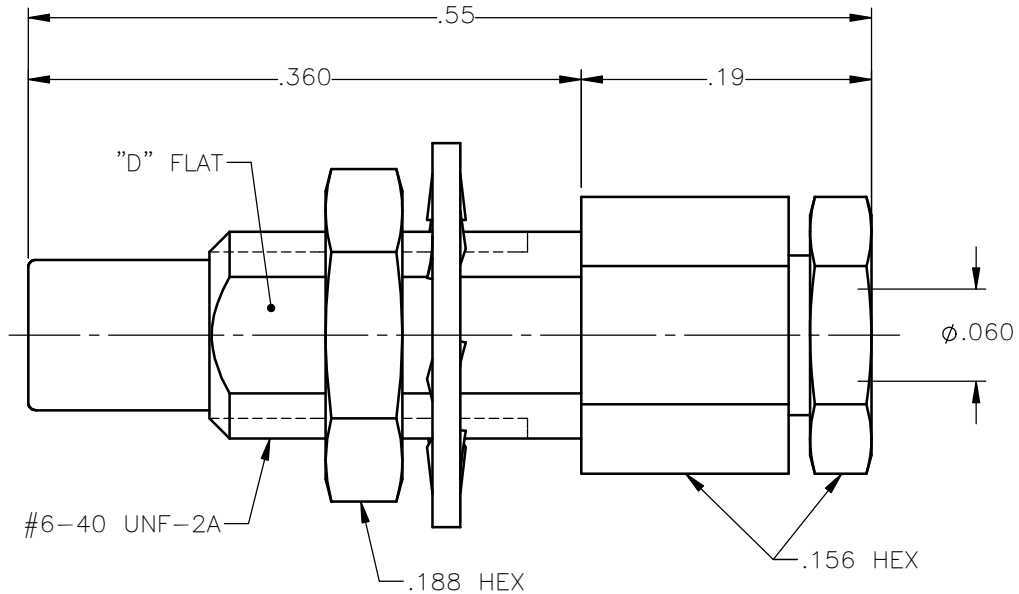


PANEL CUT OUT



inches		
	Maxi	mini
A	.143	.140
B	.129	.126

REVISIONS			
REV.	DESCRIPTION	DATE	APPROVED
A	INITIAL RELEASE	05/15/18	D.N.





NOTES:

MATERIALS:

1. BODY & CONTACT = BERYLLIUM COPPER PER ASTM B196, ALLOY C17300, TEMPER TD04.
2. INSULATORS = VIRGIN WHITE TEFLON PER ASTM D1710, GRADE 1, TYPE I, CLASS "B".
3. BACKNUT & NUT = BRASS PER ASTM B16, ALLOY C36000, TEMPER H02.
4. LOCKWASHER = PHOSPHOR BRONZE PER ASTM B139, COPPER ALLOY C53400, TEMPER H04.

FINISHES:

1. CONTACT = GOLD PLATE PER ASTM B488-11, TYPE II, 50µin MIN, GRADE C, OVER 100 TO 200µin STRESS FREE SULFAMATE NICKEL PER AMS-QQ-N-290.
2. ALL OTHER METAL PARTS = GOLD PLATE PER ASTM B488-11, TYPE II, 30µin MIN, GRADE C OVER 100 TO 200µin COPPER STRIKE PER AMS 2418.

UNLESS OTHERWISE SPECIFIED DIMENSIONS ARE IN INCHES TOLERANCES ON	DWN: DATE	 Property of Radiall This document cannot be reproduced or communicated to a third party without prior written permission of RADIALL.	
	D.N. 05/15/18		
DECIMAL	ANGLE	CHKD: DATE	SSMC STRAIGHT JACK BULKHEAD REAR MOUNT SOLDER CLAMP FOR .056 S/R & SIMILAR CABLES
		C.E. 05/15/18	
REFERENCE:	MATERIALS & FINISHES:	APVD: DATE	SIZE
ORIGINATED: D.N. DATE: 05/15/18	SEE NOTES	J.M. 05/15/18	A
			FSCM NO. 19505
			DWG NO. 7003-1542-021
			REV A
			SCALE 8:1
			THIRD ANGLE PROJECTION
			SHEET 1 OF 1

7003-1542-021