

# PRODUCT RELEASE NOTIFICATION

## New Product Details:

LSR Part Number	Description
450-0109	COM6L to BeagleBoard Adapter

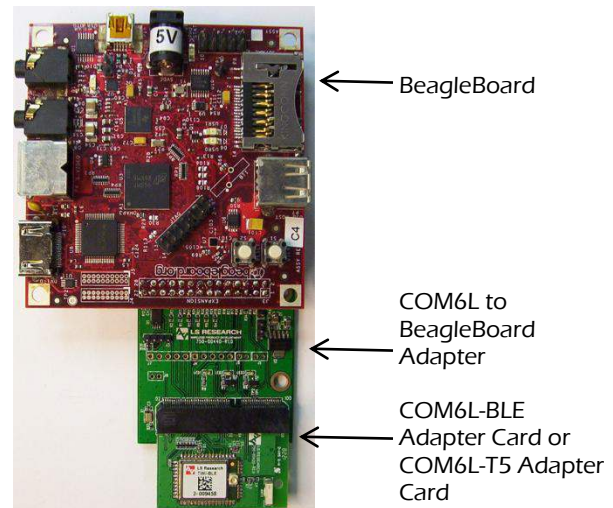
## Description of New Product:

The *COM6L to BeagleBoard Adapter* allows interfacing various COM6L modules to the 28 pin expansion header on the BeagleBoard and BeagleBoard-xM platforms. In addition, the *COM6L to BeagleBoard Adapter* provides an on-board regulator, 32 KHz slow clock crystal oscillator, LED indicators, serial EEPROM, and various debugging headers.

The *COM6L to BeagleBoard Adapter* is designed for use with both the COM6L-T5 (TiWi5) Adapter Card and the COM6L-BLE (TiWi-BLE) Adapter Card.



**COM6L to BeagleBoard Adapter**



**COM6L to BeagleBoard Adapter interfacing the BeagleBoard to LSR's COM6L-BLE Adapter Card or COM6L-T5 Adapter Card**

## Users Guide Available at:

[wiki.lsr.com](http://wiki.lsr.com)

## Product Availability:

Orders are currently being accepted with an anticipated ship date of October 1<sup>st</sup>, 2012.

## Contact Information:

<b>Headquarters</b>	LS Research, LLC W66 N220 Commerce Court Cedarburg, WI 53012-2636 USA Tel: 1(262) 375-4400 Fax: 1(262) 375-4248
<b>PCN/PRN/PDN Contact</b>	<a href="mailto:pcn@lsr.com">pcn@lsr.com</a>
<b>Website</b>	<a href="http://www.lsr.com">www.lsr.com</a>
<b>Wiki</b>	<a href="http://wiki.lsr.com">wiki.lsr.com</a>
<b>Technical Support</b>	<a href="http://forum.lsr.com">forum.lsr.com</a>
<b>Sales Contact</b>	<a href="mailto:sales@lsr.com">sales@lsr.com</a>