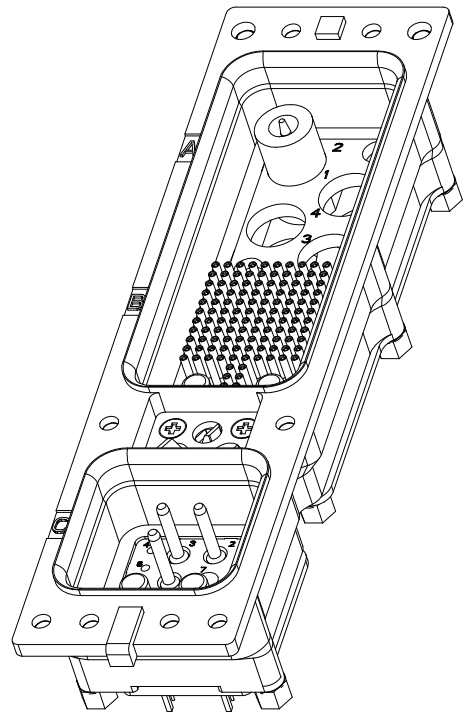


THE DRAWING IS UNPUBLISHED.  
 © COMPANY - BY -  
 RELEASED FOR PUBLICATION  
 ALL RIGHTS RESERVED

REVISIONS				
P	LN	DESCRIPTION	DATE	BY
E	REV PER	ECO-17-013837	09-20-17	DCB RL



- CONNECTOR DIMENSIONS ARE PER ARINC 600 SPECIFICATION.
  - CONNECTOR IS SUPPLIED WITH A DUST COVER INSTALLED; NOT SHOWN.
  - KEYING SHOWN IN POSITION FOR ILLUSTRATION ONLY.  
CONNECTORS SHIPPED WITH KEYING INSTALLED IN POSITION PER TABLE FOR POSITION "00" KEYING HARDWARE SHIPPED UNASSEMBLED.
  - SIZE 22 AND SIZE 12 CONTACTS NOT SHOWN IN FRONT AND REAR VIEWS FOR CLARITY.
- △ DIMENSION TO CONTACT POST IS WITH CONTACTS FULLY SEATED TO REAR OF CONTACT CAVITIES.
- △ THE FOLLOWING CONTACTS AND FILLER PLUGS ARE LOADED IN THIS CONNECTOR:
- MODULE A:  
 P/N 1663625-1 (SIZE 1 FILLER PLUG; QTY = 3) POSITIONS 1, 3 & 4.  
 P/N 1757669-1 (MODIFIED SIZE 1 COAX PIN ADAPTER; QTY = 1) POSITION 2.
- MODULE B:  
 P/N 211431-6 (SIZE 22 POSTED CONTACT; QTY = 118)  
 P/N 448540-3 (POSTED SIZE 8 PIN COAX; QTY = 2)
- MODULE C:  
 P/N 1663129-5 (SIZE 12 POSTED CONTACT; QTY = 3) POSITIONS 2, 3 & 8.  
 P/N 1663535-1 (POSTED SIZE 5 PIN COAX; QTY = 2) POSITIONS 12 & 13.  
 P/N 1663767-6 (SIZE 20 FILLER PLUG; QTY = 4) POSITIONS 1, 4, 5 & 6.  
 P/N 1663767-7 (SIZE 16 FILLER PLUG; QTY = 3) POSITIONS 9, 10 & 11.  
 P/N 1663767-8 (SIZE 12 FILLER PLUG; QTY = 1) POSITION 7.
- △ THE FOLLOWING CONTACTS AND FILLER PLUGS ARE LOADED IN THIS CONNECTOR:
- MODULE A:  
 P/N 1663625-1 (SIZE 1 FILLER PLUG; QTY = 3) POSITIONS 1, 3 & 4.  
 P/N 1757669-1 (MODIFIED SIZE 1 COAX PIN ADAPTER; QTY = 1) POSITION 2.
- MODULE B:  
 S2 22 NON-REMOVABLE POSTED SOCKET CONTACT (QTY = 118)  
 P/N 448540-3 (POSTED SIZE 8 PIN COAX; QTY = 2)
- MODULE C:  
 P/N 1663129-5 (SIZE 12 POSTED CONTACT; QTY = 3) POSITIONS 2, 3 & 8.  
 P/N 1663535-1 (POSTED SIZE 5 PIN COAX; QTY = 2) POSITIONS 12 & 13.  
 P/N 1663767-6 (SIZE 20 FILLER PLUG; QTY = 4) POSITIONS 1, 4, 5 & 6.  
 P/N 1663767-7 (SIZE 16 FILLER PLUG; QTY = 3) POSITIONS 9, 10 & 11.  
 P/N 1663767-8 (SIZE 12 FILLER PLUG; QTY = 1) POSITION 7.
- △ STANDOFF FASTENER TORQUE TO BE 3.5-4.5 in-lb
- △ STANDOFF FASTENER TORQUE TO BE 5.5-6.5 in-lbs

COMPONENT	MATERIAL	FINISH
SHELL	ALUMINUM ALLOY A380 PER ASTM-B-85	ELECTROLESS NICKEL PER MIL-C-26074
RETENTION PLATES	ALUMINUM ALLOY PER ASTM-B-209	ELECTROLESS NICKEL PER MIL-C-26074
PAN HEAD SCREWS AND LOCKWASHERS	STAINLESS STEEL	PASSIVATED
FLAT HEAD SCREWS (FOR KEYING HARDWARE)	STAINLESS STEEL	PASSIVATED
POLARIZING KEYS	ZINC ALLOY PER ASTM-B-86	-
POLARIZING KEY RETAINING PLATE	ALUMINUM ALLOY PER ASTM-B-209	BLUE ANODIZED PER MIL-A-8625
C4 INSERT	DIE CAST ALUMINUM PER ASTM-B-85.	ELECTROLESS NICKEL PER MIL-C-26074.
120T2 & 13C2 INSERTS	THERMOSET OR THERMOPLASTIC PPS PER MIL-M-24519	-
STANDOFF	STAINLESS STEEL	PASSIVATED

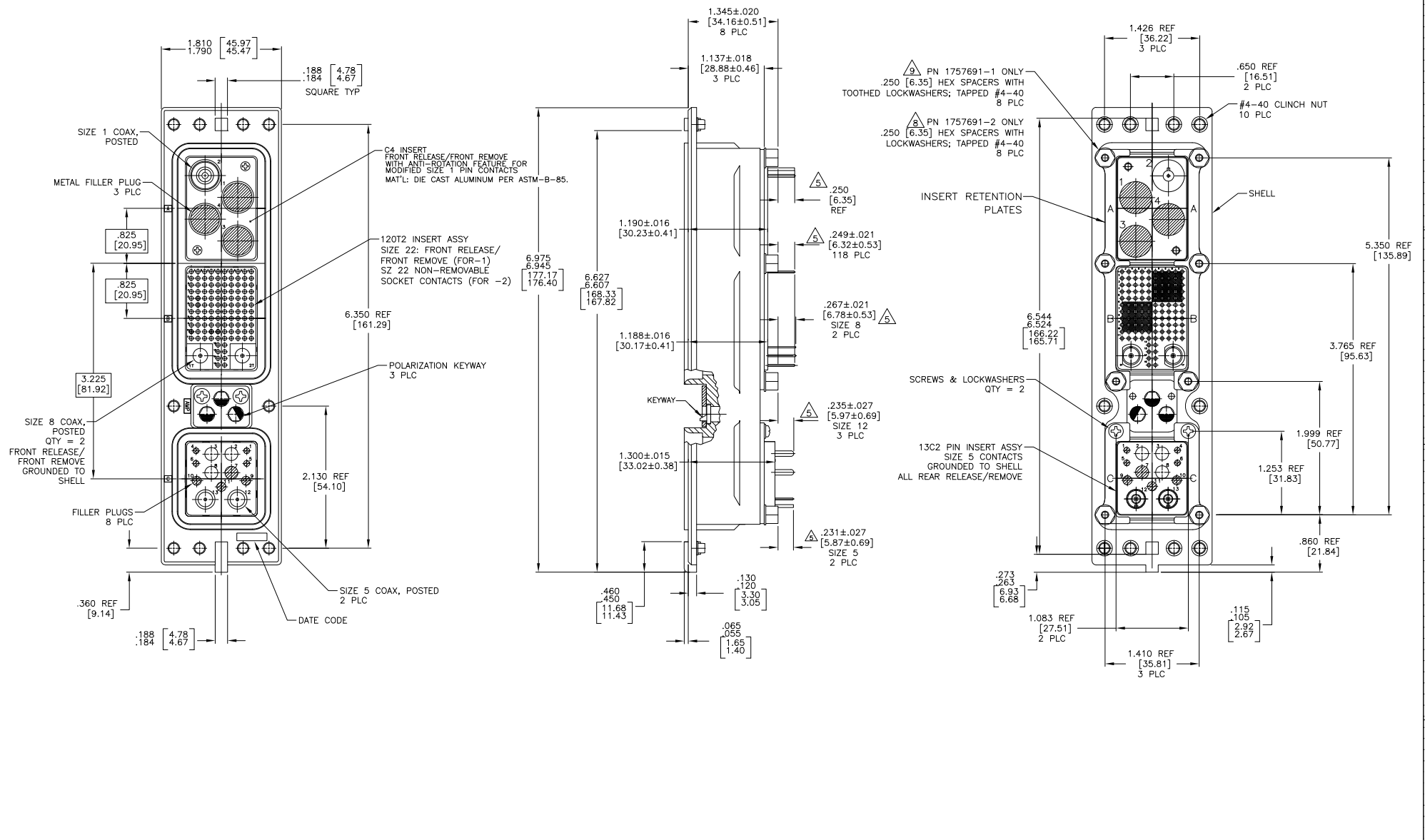
03	△	1757691-2
03	△	1757691-1
KEYING POSITION	CONTACTS INCLUDED AND INSTALLED	PART NUMBER

THIS DRAWING IS A CONTROLLED DOCUMENT.

DATE: 2-7-05  
 BY: C.C. THOMAS  
 DATE: 2-14-05  
 BY: K. HOGAN  
 DATE: 2-14-05  
 BY: K. HOGAN

TE Connectivity  
 RCPT ASSY, SIZE 2, SEALED, ARINC 600 (C4/120T2/13C2)

APPLICATION SPEC: ---  
 SIZE: --- CASE CODE (DRAWING NO): ---  
 RESTRICTED TO: ---  
 REVISION: 0  
 A1 00779 C=1757691  
 CUSTOMER DRAWING SCALE: 3:2 SHEET 1 OF 2 REV F



THIS DRAWING IS A CONTROLLED DOCUMENT.		REV: 2-7-05	DATE: 2-14-05	TE Connectivity
DRAWN BY: C.C. THOMAS		DATE: 2-14-05	DATE: 2-14-05	
CHECKED BY: P. HOGAN		DATE: 2-14-05	DATE: 2-14-05	PRODUCT SPEC: RCPT ASSY, SIZE 2, SEALED, ARINC 600 (C4/120T2/13C2)
APPROVED BY: P. HOGAN		DATE: 2-14-05	DATE: 2-14-05	APPLICATION SPEC:
MATERIAL: SEE TABLE		FINISH: SEE TABLE	RESTRICTED TO: --	SIZE: A1 CASE CODE: 00779 DRAWING NO: C=1757691 CUSTOMER DRAWING
SCALE: 3:2			SHEET: 2 OF 2	REV: F