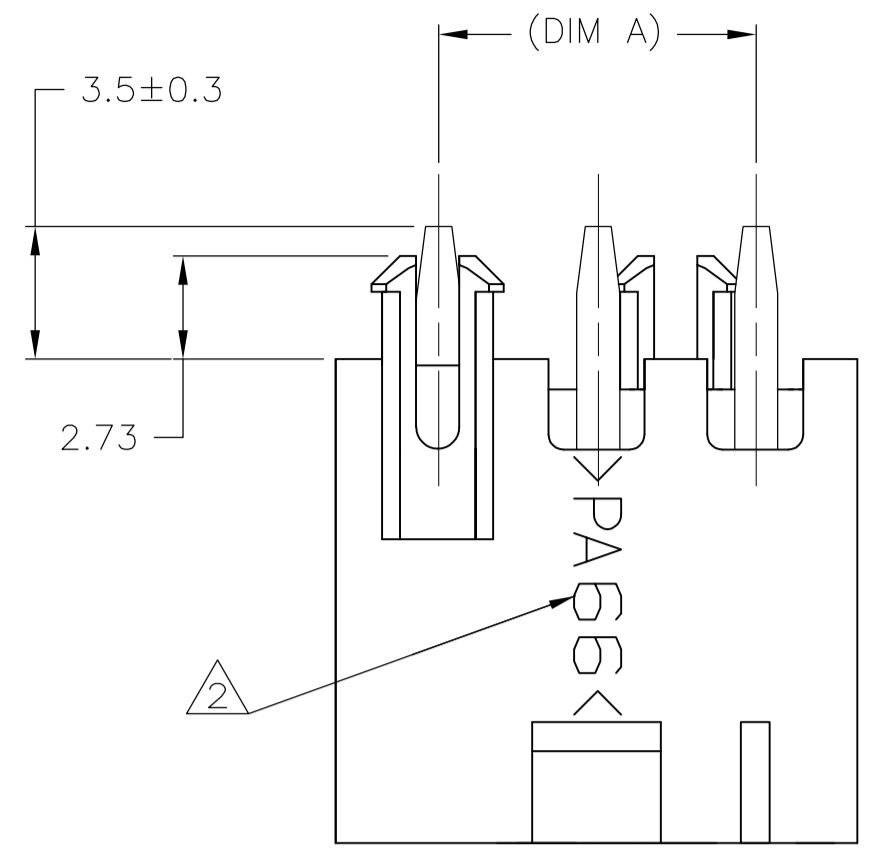
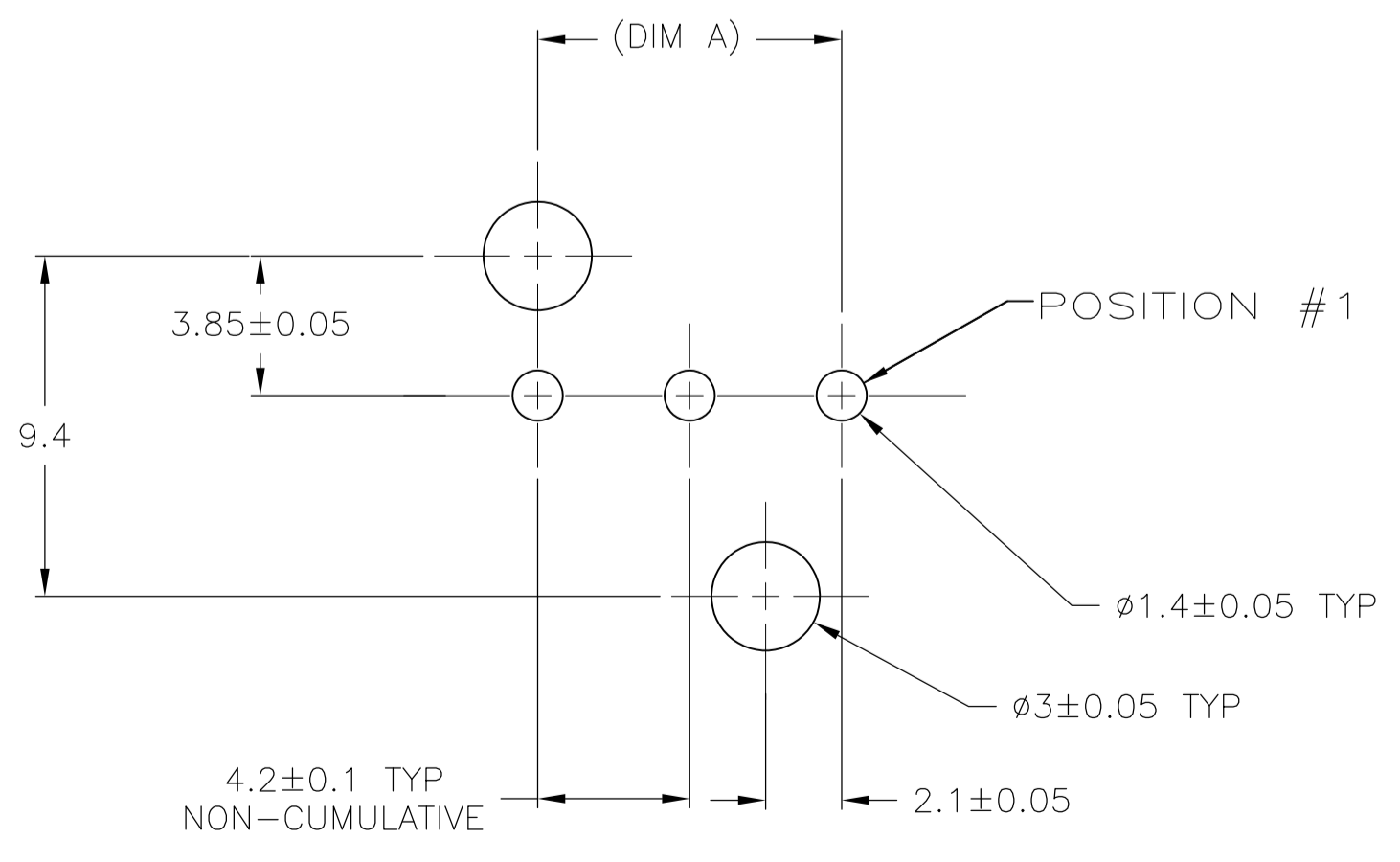
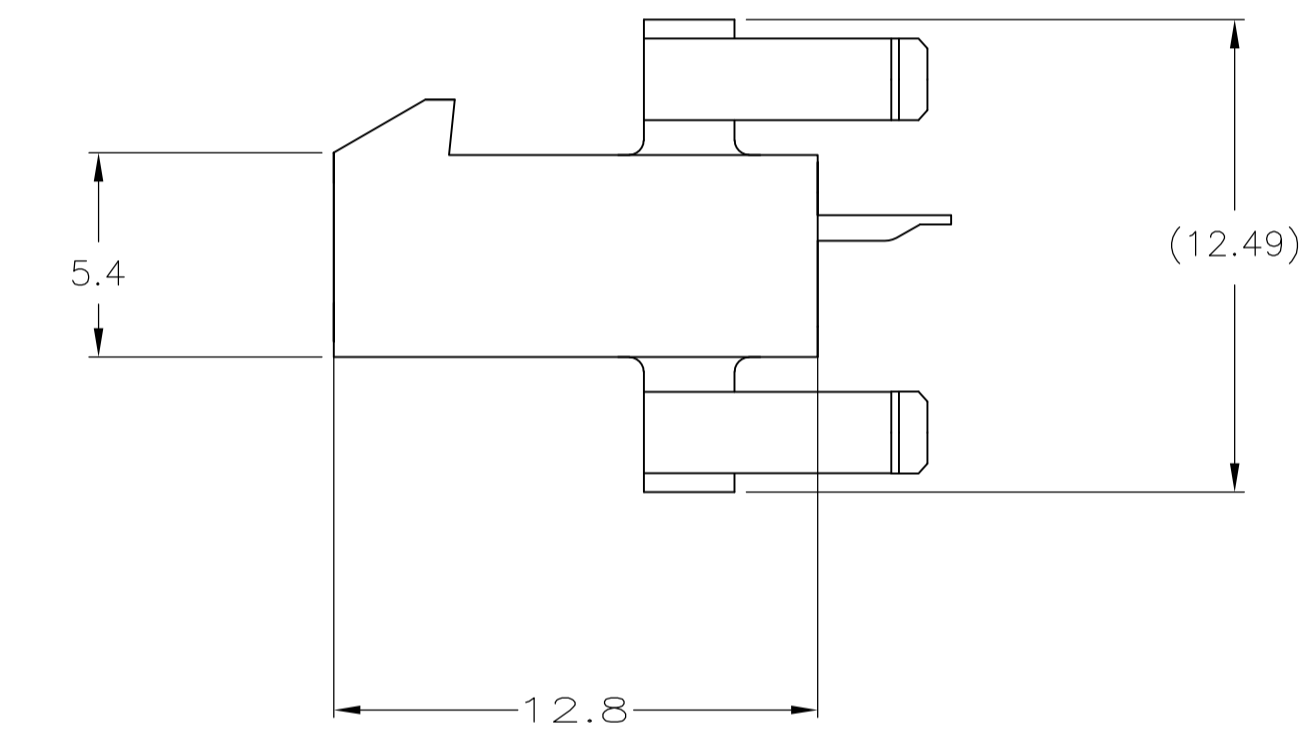
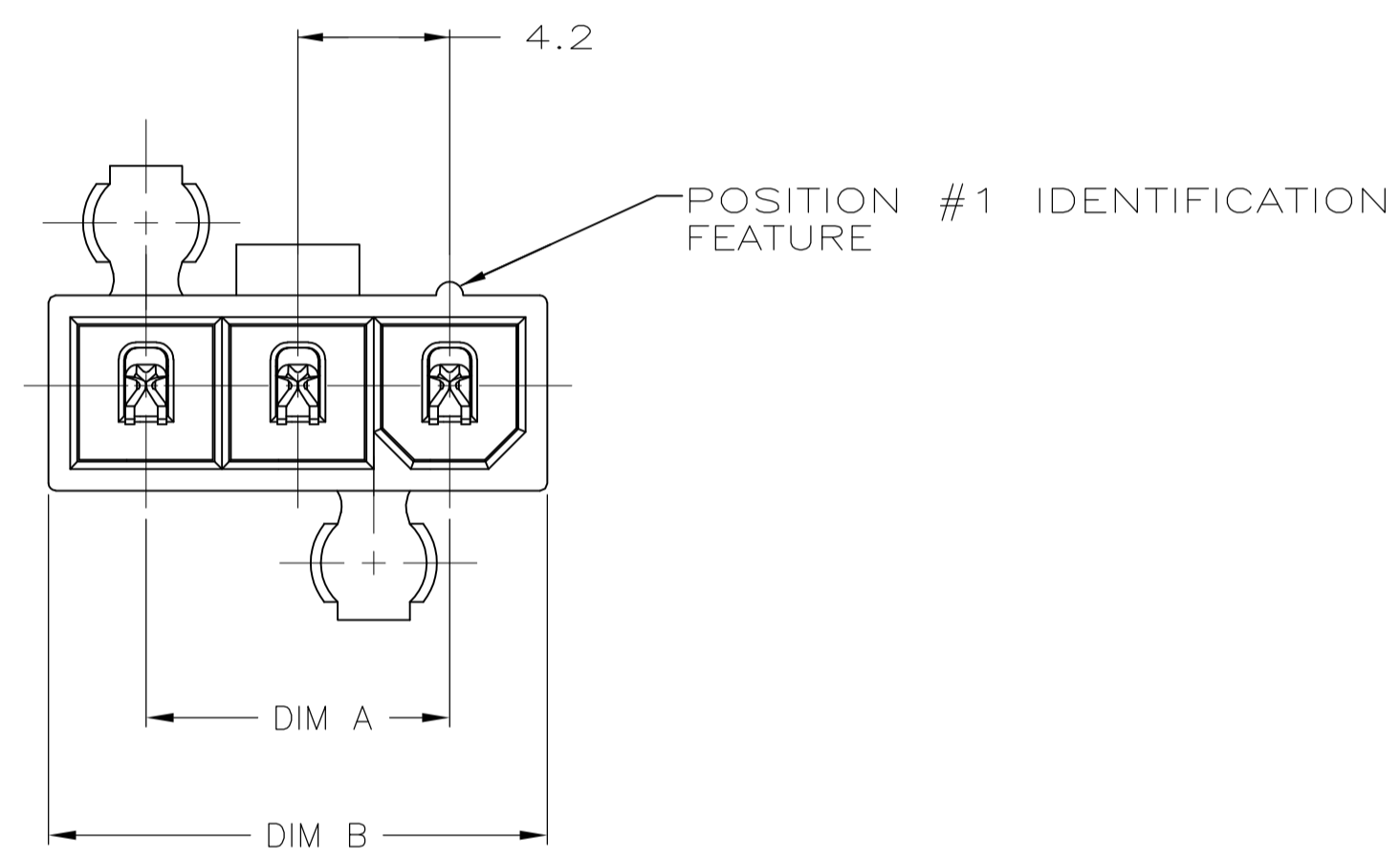


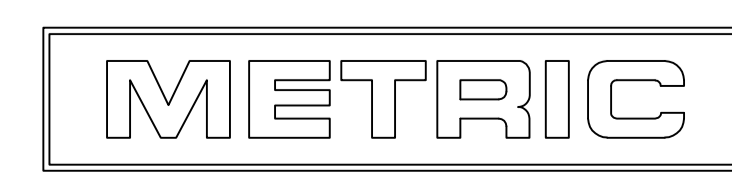
LOC		DIST		REVISIONS			
P	LTR	DESCRIPTION	DATE	DMN	APVD		
A		WR-08-45	23SEP2008	KW	CC		
B		REVISED ECR-14-015945	28OCT2014	A.Z	D.Z		



- ⚠ MATERIAL: HOUSING - NYLON 66 GF20, UL94V-0, NATURAL.  
CONTACTS - BRASS, TIN PLATED.
- ⚠ TYCO ELECTRONICS LOGO AND MATERIAL ID MAY BE LOCATED ON EITHER LONG SIDE OF PART.
- 3. GLOW WIRE APPROVED, CONTACT TYCO ELECTRONICS ENGINEERING FOR SPECIFICATION.



RECOMMENDED MOUNTING HOLE PATTERN FOR 1.78 MAX THICK P.C. BOARD COMPONENT SIDE SHOWN



22.2	16.8	5	2029181-5
18	12.6	4	2029181-4
13.8	8.4	3	2029181-3
DIM B	DIM A	NO. OF POSITIONS	PART NO

THIS DRAWING IS A CONTROLLED DOCUMENT.		DIN K. WHITAKER 23SEP2008		TE Connectivity	
DIMENSIONS: mm		CHK C. CASH 23SEP2008			
TOLERANCES UNLESS OTHERWISE SPECIFIED:		APVD C. CASH 23SEP2008		NAME	
0. PLC ± -		PRODUCT SPEC		PLUG ASSEMBLY, VERTICAL, SINGLE ROW, W/O DRAIN HOLES, VAL-U-LOK(TM)	
1. PLC ± 0.2		APPLICATION SPEC		SIZE	
2. PLC ± 0.13		114-13172		CAGE CODE	
3. PLC ± -		DRAWING NO		DRAWING NO	
4. PLC ± -		100779		C=2029181	
ANGLES ± 0°30'		WEIGHT		RESTRICTED TO	
MATERIAL		CUSTOMER DRAWING		SCALE N/A	
FINISH		SHEET 1 OF 1		REV B	