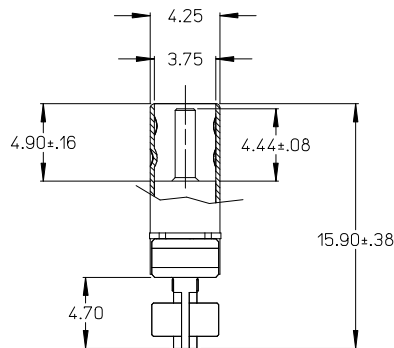
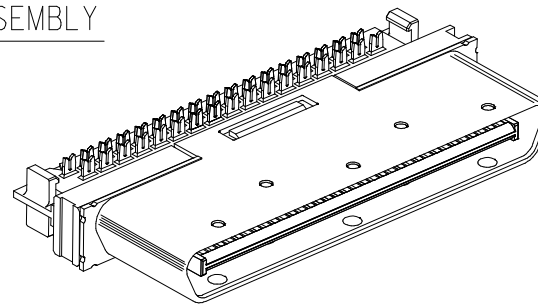
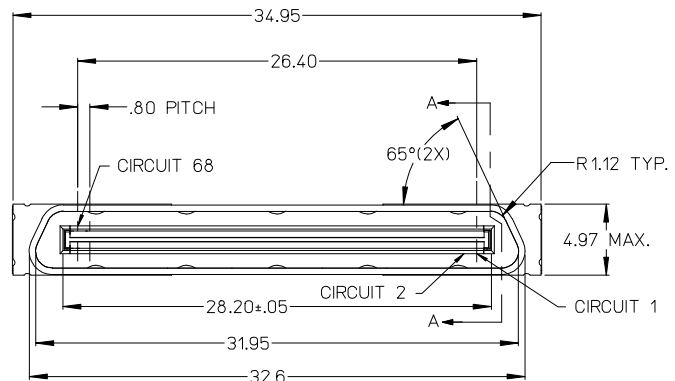
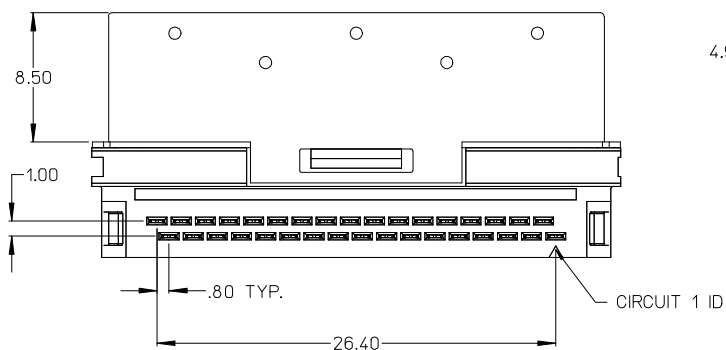


# PLUG ASSEMBLY

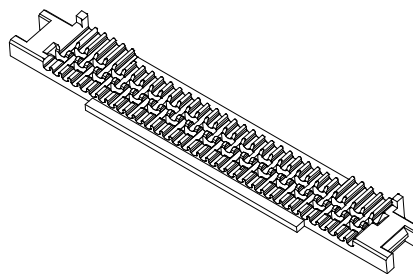
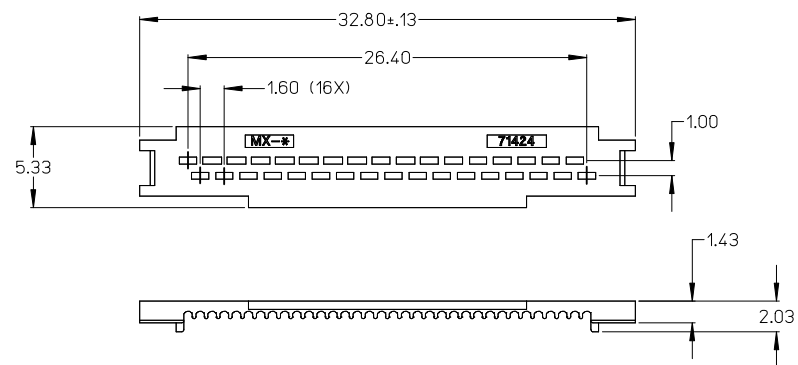


**NOTES:**

1. MATERIAL: HOUSING: GLASS FILLED THERMOPLASTIC; NATURAL; UL 94V-0  
TERMINALS: COPPER ALLOY  
SHIELD: ALUMINUM KILLED STEEL
2. FINISH: TERMINALS: 0.76 MICROMETER MINIMUM GOLD IN THE CONTACT AREA  
NICKEL UNDERPLATE OVERALL  
SHIELD: 2.54 MICROMETER MINIMUM BRIGHT NICKEL OVER COPPER FLASH.
3. ASSEMBLY MATES WITH RECEPTACLE #71430 AND 73776.
4. PACKAGED PER PK-70873-0851.
5. PRODUCT CONFORMS TO PS-71425-9999.
6. FOR DIE CAST SHELL KITS SEE SD-73796-008.
7. PART COMPLIES WITH CLASS B OF COSMETIC SPECIFICATION PS-45992-002.
8. TO BE USED WITH 28-30 AWG STRANDED WIRE OR 30 AWG SOLID CORE WIRE.
9. SEE AS-71425-001 FOR WIRE TERMINATION INSTRUCTIONS.



SECTION A-A



# WIRE COVER

<b>ADD NOTE 9</b> EC NO: UCP2009-2243 DRWN:BBARKER 2009/03/25 CHKD:BSMART 2009/03/26 APPR:SMILLER 2009/03/27	QUALITY SYMBOLS ▽=0 ▽=0	GENERAL TOLERANCES (UNLESS SPECIFIED) mm INCH 4 PLACES ± --- ± --- 3 PLACES ± --- ± --- 2 PLACES ± 0.25 ± --- 1 PLACE ± --- ± --- ANGULAR ± 1/2°	DIMENSION STYLE MM ONLY DRAWN BY DATE BBARKER 2002/10/29 CHECKED BY DATE DMORGAN 2002/10/29 APPROVED BY DATE SMILLER 2002/10/29	SCALE DESIGN UNITS METRIC THIRD ANGLE PROJECTION	TITLE VHDCI 0.8 MM PITCH 68 CIRCUIT IDT PLUG KIT - SALES ASSEMBLY
	KIT COMPONENTS 71425-0050 PLUG ASSEMBLY 1 71425-0003 WIRE COVER 2 71424-0001		MATERIAL NO. SEE TABLE		DOCUMENT NO. SD-71425-002
	DRAFT WHERE APPLICABLE MUST REMAIN WITHIN DIMENSIONS		SIZE THIS DRAWING CONTAINS INFORMATION THAT IS PROPRIETARY TO MOLEX INCORPORATED AND SHOULD NOT BE USED WITHOUT WRITTEN PERMISSION		SHEET NO. 1 OF 1
	MOLEX MOLEX INCORPORATED				

KIT ITEM #	DESCRIPTION	QUANTITY	ITEM PART #
71425-0050	PLUG ASSEMBLY	1	71425-0003
	WIRE COVER	2	71424-0001