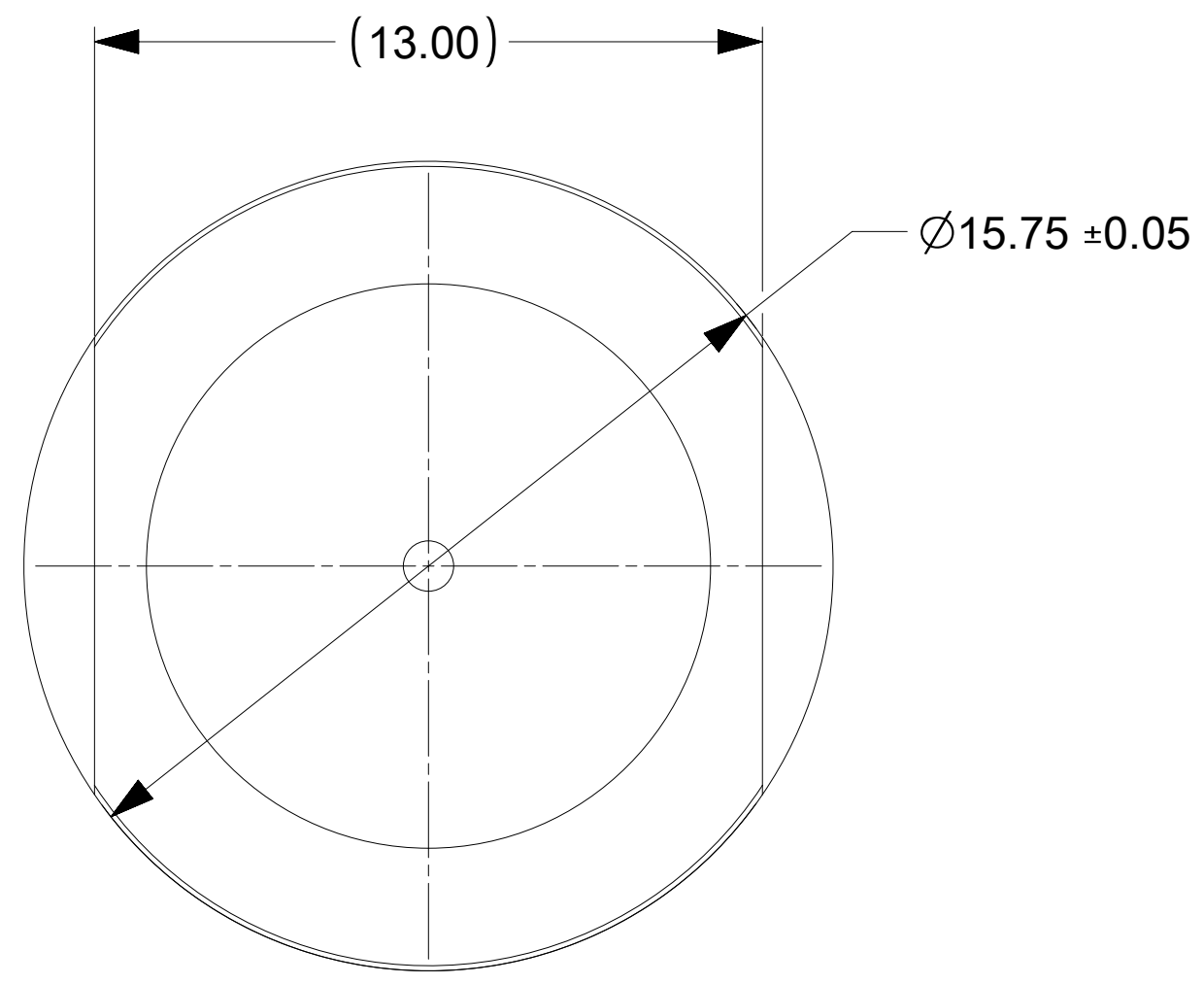
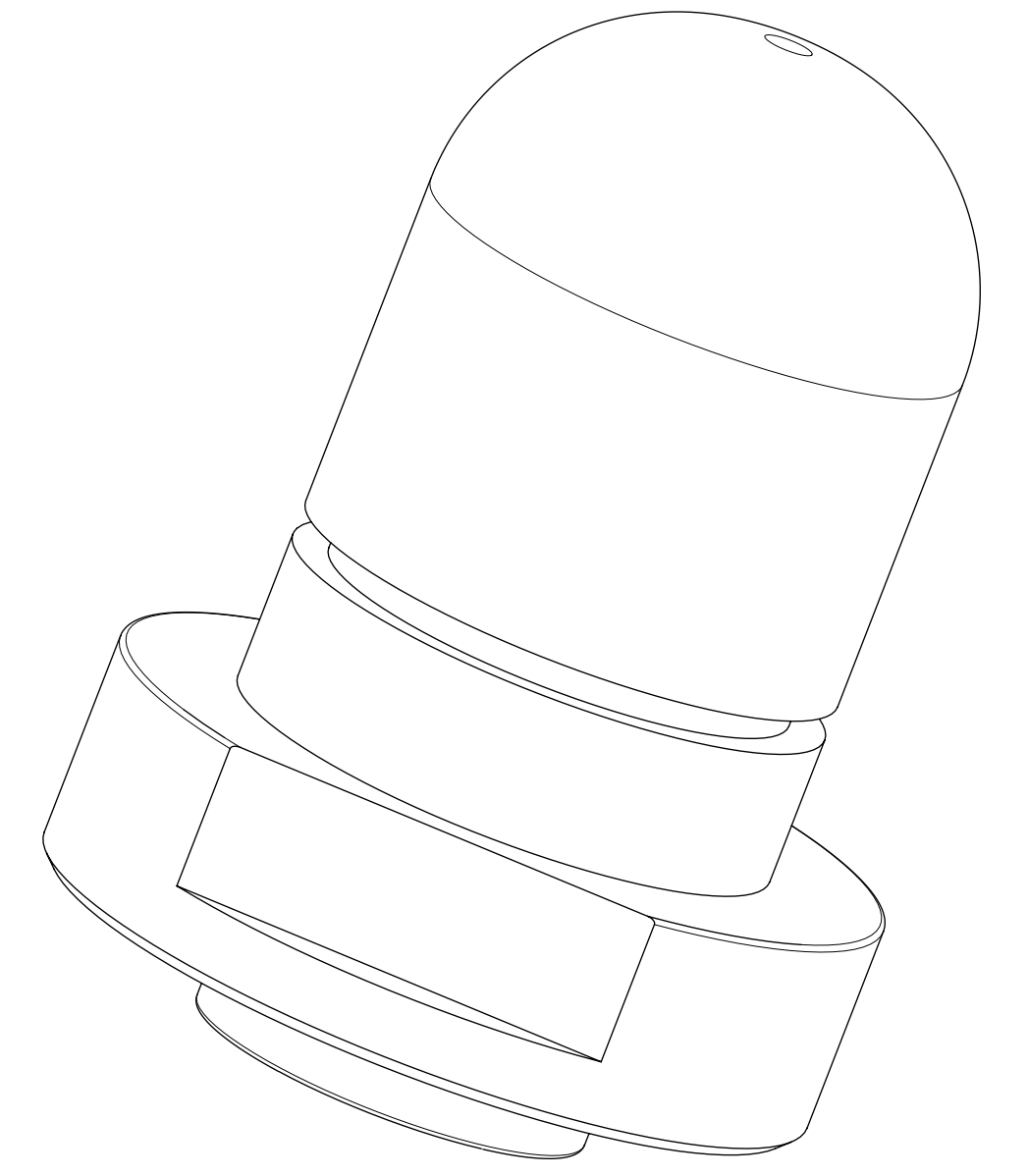
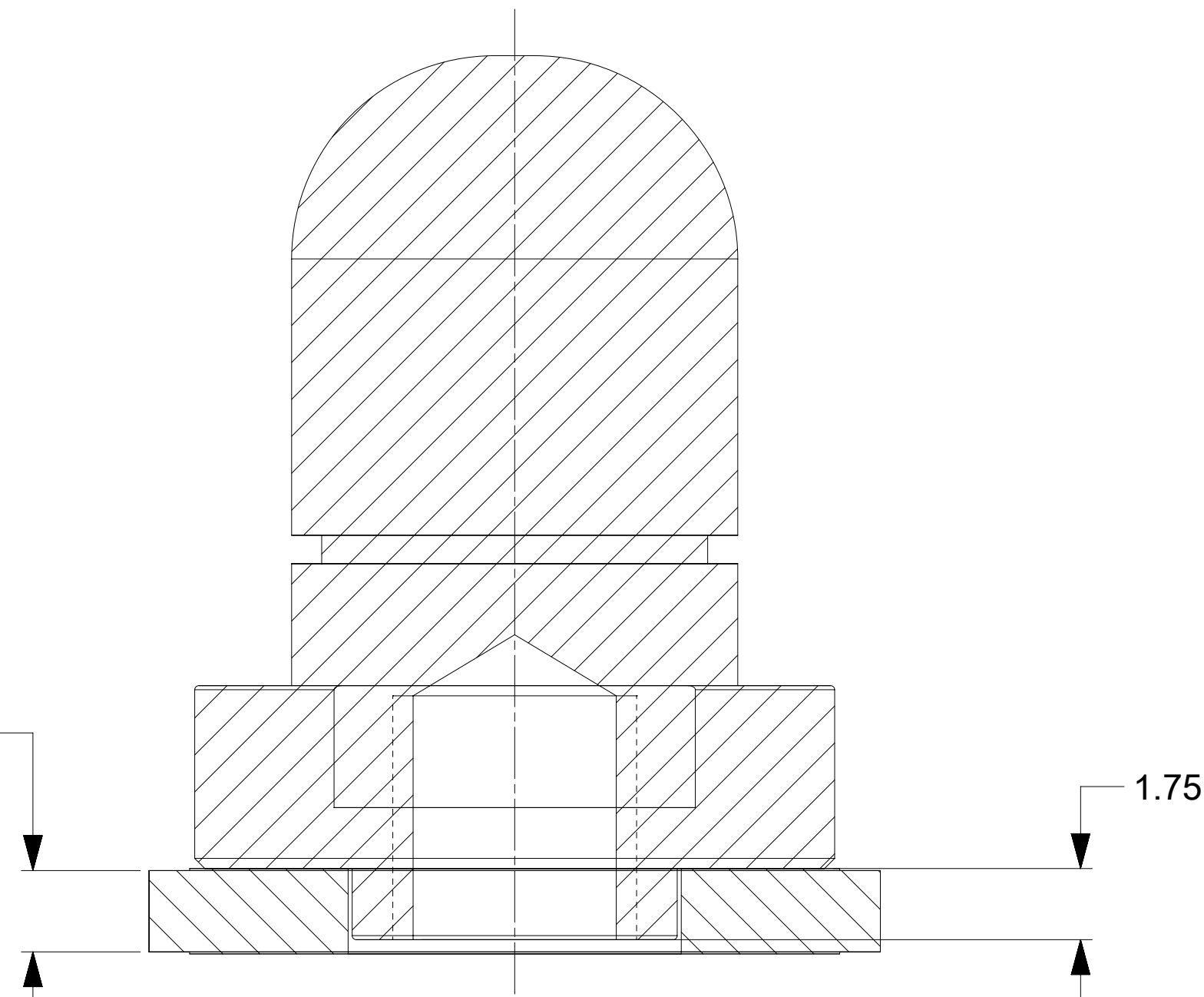
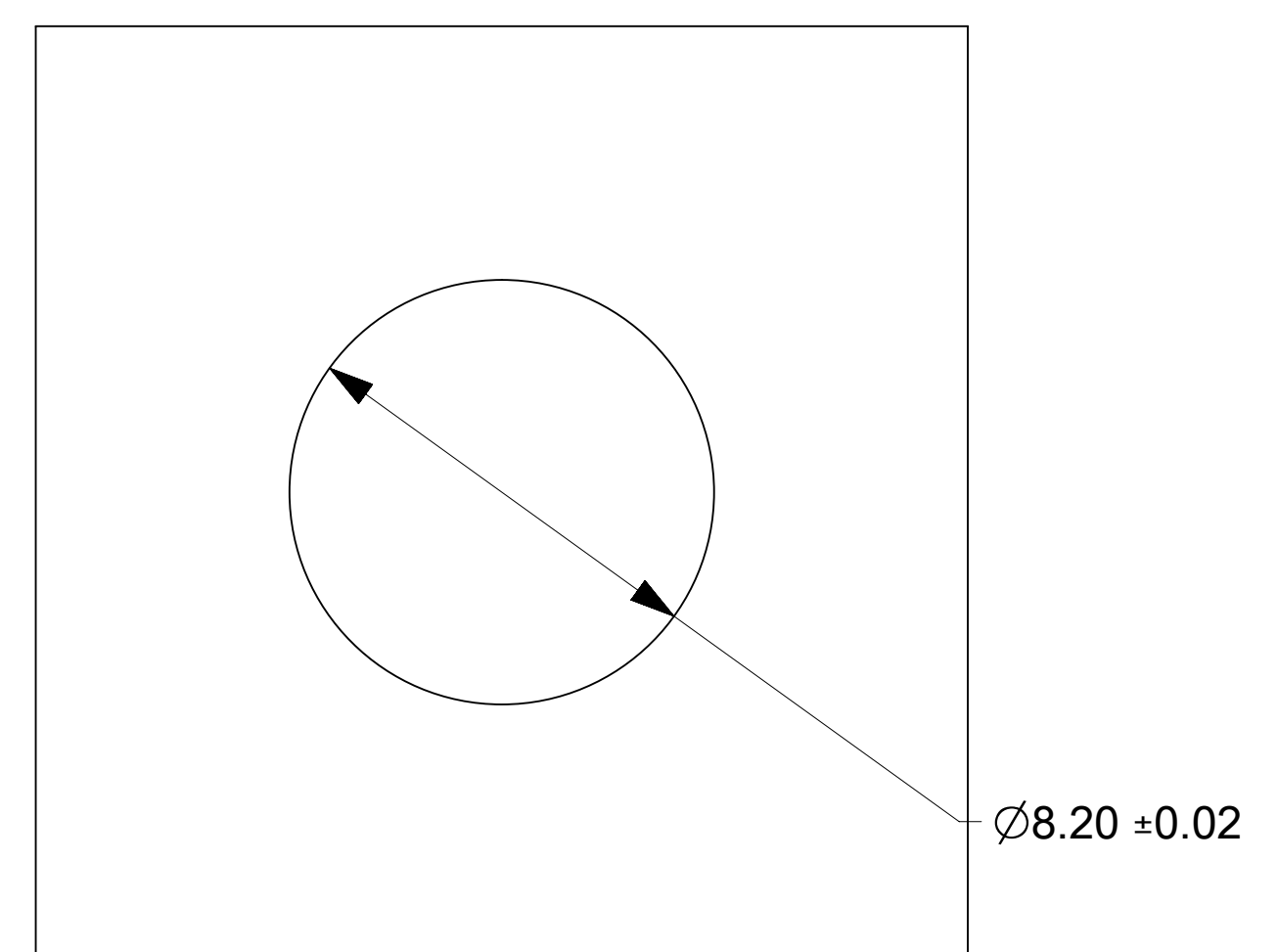
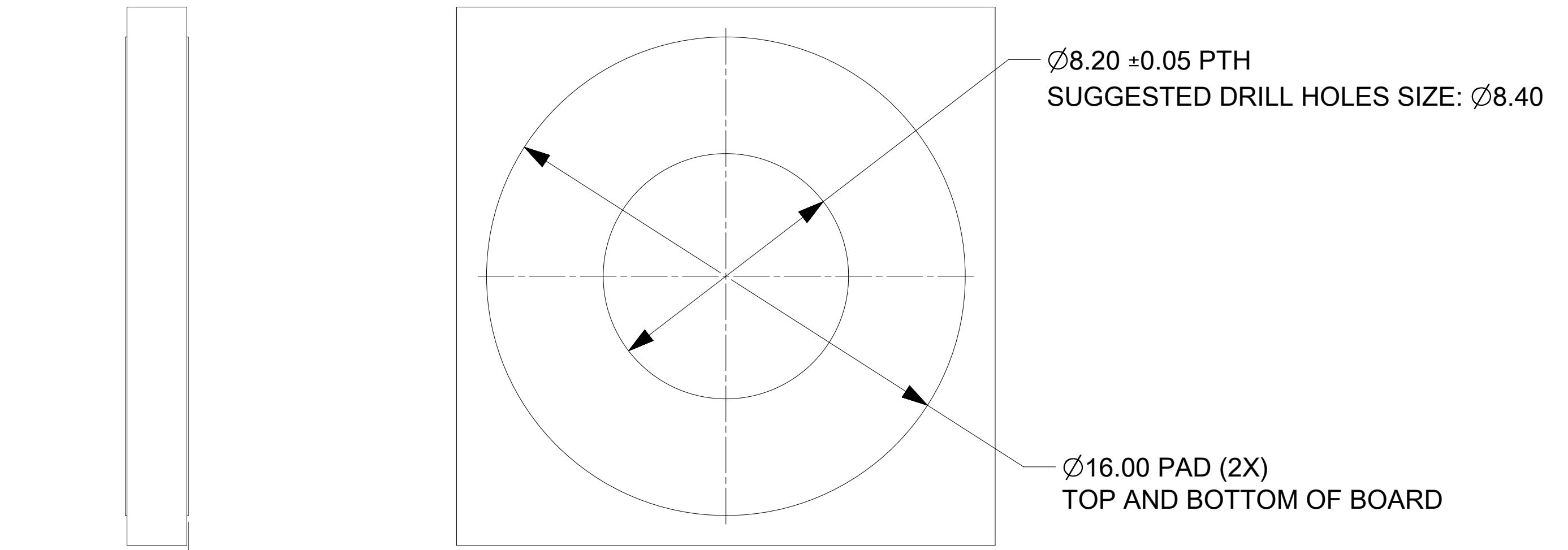


MINIMUM BOARD THICKNESS IS 2.00MM



NOTES:

- MATERIALS:  
BASE METAL: HIGH CONDUCTIVE COPPER ALLOY  
PLATING ON BODY: 3.18 MICRON MIN SILVER OVER 1.27 MICRON MIN NICKEL
- SILVER COMPONENTS WILL BE SUPPLIED TARNISH FREE BUT MAY TARNISH OVER TIME.
- PART TO BE MOUNTED WITH CONDUCTIVE M6 SCREW AND CONDUCTIVE BELLEVILLE WASHER FOR OPTIMAL PERFORMANCE
- SCREW LENGTH TO BE DETERMINED BY CUSTOMER, BASED ON THE BUS BAR / PCB THICKNESS  
SCREWS AND WASHERS ARE NOT SUPPLIED BY MOLEX.
- PRODUCT SPECIFICATION: 2182310001-AS
- APPLICATION SPECIFICATION: 2182310001-AS
- PACKAGING SPECIFICATION: BULK PACKAGING AS PER 2183350001-PK



DOCUMENT STATUS	P1	RELEASE DATE	2023/03/06	12:36:37
-----------------	----	--------------	------------	----------

THIS DRAWING CONTAINS INFORMATION THAT IS PROPRIETARY TO MOLEX ELECTRONIC TECHNOLOGIES, LLC AND SHOULD NOT BE USED WITHOUT WRITTEN PERMISSION									
DIMENSION UNITS	SCALE	CURRENT REV DESC: PRODUCT RELEASE							
mm	2:1	<p><b>molex</b></p> <p>11MM SW1 SCREW MOUNT LOCKING PIN</p> <p>PRODUCT CUSTOMER DRAWING</p>							
GENERAL TOLERANCES (UNLESS SPECIFIED)									
ANGULAR TOL	± 0.5°								
4 PLACES	±								
3 PLACES	±								
2 PLACES	± 0.15								
1 PLACE	± 0.25	EC NO: 741091	2022/11/24		<p>DOCUMENT NUMBER: <b>2183730001</b></p> <p>DOC TYPE: PSD</p> <p>DOC PART: 000</p> <p>REVISION: A2</p>				
0 PLACES	±	DRWN: SREENA1	2023/03/06						
DRAFT WHERE APPLICABLE MUST REMAIN WITHIN DIMENSIONS		CHK'D: GSHARMA	2023/03/06						
THIRD ANGLE PROJECTION		APPR: HTHYAGARAJ	2023/03/06		MATERIAL NUMBER: 218370001		CUSTOMER: GENERAL MARKET		SHEET NUMBER: 1 OF 1
DRAWING: D-SIZE		SERIES: 218373		MATERIAL NUMBER: 218370001		CUSTOMER: GENERAL MARKET		SHEET NUMBER: 1 OF 1	