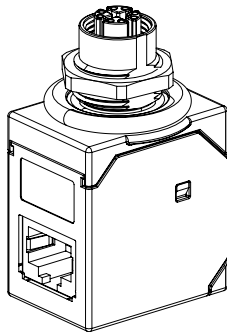
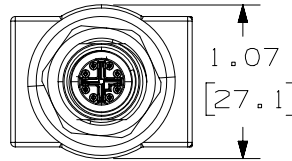
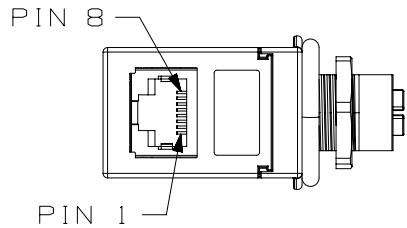
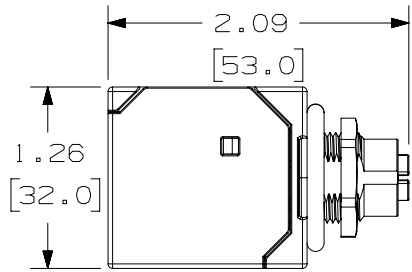


THIS COPY IS PROVIDED ON A RESTRICTED BASIS AND IS NOT TO BE USED IN ANY WAY DETRIMENTAL TO THE INTERESTS OF PANDUIT CORP.



ACTUAL SIZE

NOTES:

1. CONSTRUCTED TO MEET THE FOLLOWING STANDARDS:
  - A. FEMALE M12 X-CODE END: IEC 61076-2-109
  - B. M12 TO RJ45: ANSI/TIA-568-C.2
2. THE TRANSMISSION PERFORMANCE IS 10 GIGABIT ETHERNET ACCORDING TO IEEE 802.3an
  - A. THE PRODUCT WAS TESTED ACCORDING TO ANSI/TIA-568-C.2 PERMANENT LINK, CATEGORY 6A
3. MEETS THE FOLLOWING CATEGORIES:
  - A. CATEGORY CLASS E, PER ISO/IEC 11801 DIN 50173-1
  - B. CATEGORY 6A PER ANSI/TIA/EIA-568-C.2
4. ELECTRICAL:
  - A. WORKING VOLTAGE: 50V
  - B. WORKING CURRENT: 0.5A
5. MECHANICAL:
  - A. PANEL THICKNESS: 0.157" [ 4.0mm ] MAXIMUM
6. CONSTRUCTION:
  - A. ALL MATERIALS AND COMPONENTS USED MUST MEET THE MATERIAL RESTRICTIONS OF RoHS, (EUROPEAN DIRECTIVE 2011/65/EU ON THE RESTRICTION OF HAZARDOUS SUBSTANCES) AS PROPOSED BY THE RoHS TECHNICAL ADAPTATION COMMITTEE.
  - B. COMPONENT MATERIALS:
    - i. CONNECTOR HOUSING: PA UL94 VO, BLACK
    - ii. PCB: PI UL 94 VO
    - iii. JACK: PA UL94 VO, BLACK
    - iv. O-RING OUTSIDE: FKM
    - v. O-RING INSIDE: NBR
    - vi. NUT: BRASS ALLOY, (Ni) PLATED
    - vii. SHIELD CONTACT: (Cu) ALLOY PLATED WITH (Ni)
    - viii. CONTACTS (M12): (CuSn) ALLOY
    - ix. CONTACTS (RJ45): PHOSPHOR BRONZE
    - x. CONTACT FINISH (M12): (Au) OVER (Ni) PLATED
    - xi. CONTACT FINISH (RJ45): (Au) ON CONTACT AREA PLATED
7. ENVIRONMENTAL:
  - A. OPERATING TEMPERATURE: -13°F TO +176°F (-25°C TO +80°C)
  - B. STORAGE TEMPERATURE: -40°F TO +185°F (-40°C TO +85°C)
  - C. INGRESS PROTECTION RATING M12 (IP): IP67
8. WEIGHT: 0.78 LBS/10 PCS (357g/10 PCS)

PRODUCT SPEC	N/A	PACKAGING SPEC	N/A
PART NUMBER	ICAM12X90RJS	WORK INSTRUCTION	N/A
INSPECTION INSTRUCTION NUMBER	N/A	FMEA & CONTROL PLAN NUMBER	N/A

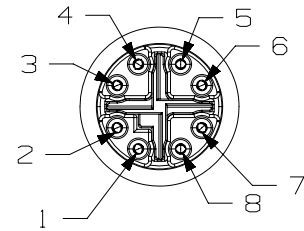
TITLE		Industrial M12, X-Code, 8-Pin Female to RJ45 Cat.6A 90-Degree Jack Adapter	
ITEM REVISION NAME		CUSTOMER DRAWING	
DATASET FILE NAME		00162LAB_00	
UNLESS OTHERWISE SPECIFIED, DIMENSIONAL TOLERANCES ARE: IN [ mm ]			
.x ± .1 [ 2.54 ]      .xxx ± .005 [ .127 ] .xx ± .01 [ .25 ]      ANGLES ± 5 °			
DRAWING NUMBER:		00162LAB-02	

REV	DATE	BY	CHK	APR	DESCRIPTION	ECN
R	3-21-17	BJN	JAV	SVASH	RELEASED TO PRODUCTION	00162LAB-02

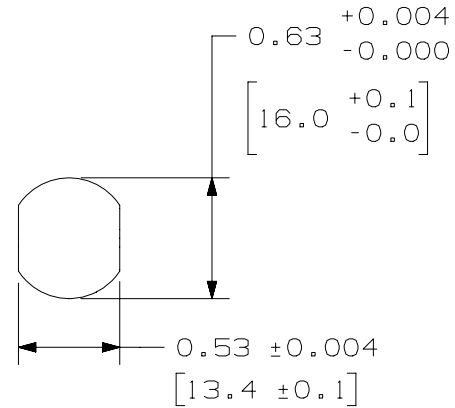
REV	DATE	BY	CHK	APR	DESCRIPTION	ECN	DRAWN BY	DATE	CHK	SCALE	SHT 1 OF 2	SIZE
							BJN	3-7-17	JAV	FULL		A

D10100DA/20

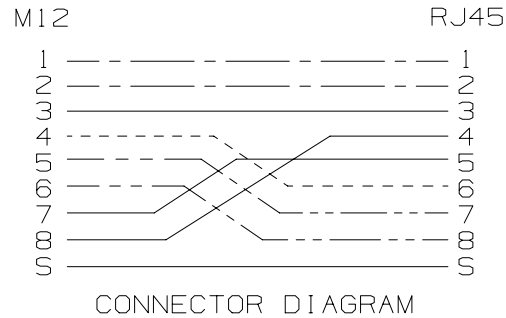
THIS COPY IS PROVIDED ON A RESTRICTED BASIS AND IS NOT TO BE USED IN ANY WAY DETRIMENTAL TO THE INTERESTS OF PANDUIT CORP.



PIN ASSIGNMENTS  
FRONT VIEW



M12 RECOMMENDED  
PANEL CUT-OUT



PRODUCT SPEC	N/A	PACKAGING SPEC	N/A
PART NUMBER	ICAM12X90RJS	WORK INSTRUCTION	N/A
INSPECTION INSTRUCTION NUMBER	N/A	FMEA & CONTROL PLAN NUMBER	N/A

TITLE		Industrial M12, X-Code, 8-Pin Female to RJ45 Cat.6A 90-Degree Jack Adapter	
CUSTOMER DRAWING			
ITEM REVISION NAME		00162LAB/00	
DATASET FILE NAME		00162LAB_DC02/00A	
UNLESS OTHERWISE SPECIFIED, DIMENSIONAL TOLERANCES ARE: IN [mm]			
.x ± .1 [ 2.54 ]      .xxx ± .005 [ .127 ] .xx ± .01 [ .25 ]      ANGLES ± 5 °			
DRAWN BY		THIRD ANGLE PROJECTION	
DATE		DRAWING NUMBER:	
3-7-17		00162LAB-02	
CHK	SCALE	SIZE	
JAV	FULL	A	

REV	DATE	BY	CHK	APR	DESCRIPTION	ECN
R	3-21-17	BJN	JAV	SVASH	SEE SHEET 1 FOR REVISION HISTORY	00162LAB-02

D10100DA/14