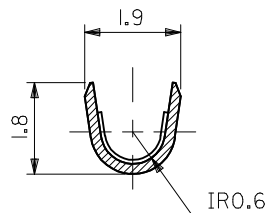


SECT. A-A
(SCALE 10 : 1)



SECT. B-B
(SCALE 10 : 1)

注記 NOTES:
1. 一般公差 : ±0.4
GENERAL TOLERANCES: ±0.4

材料 MATERIAL 黄銅 BRASS 0.2 t
仕上げ FINISH —
適用電線範囲 WIRE RANGE AWG#22-#28
被覆外径 INS. RANGE φ 1.1~1.5

REVISED EC NO: J2017-0317 DRAWINGS CHKD: APPR: MSASAO 2017/03/06 2017/03/15	GENERAL TOLERANCES (UNLESS SPECIFIED)	
	0.25 UNDER	±0.03
	0.25 OVER 0.5 UNDER	±0.05
	0.5 OVER 0 UNDER	±0.1
	0 OVER 10 UNDER	±0.2
10 OVER 30 UNDER	±0.25	
30 OVER	±0.3	
ANGULAR	±3 °	
DRAFT WHERE APPLICABLE MUST REMAIN WITHIN DIMENSIONS		

DIMENSION STYLE MM ONLY	
DRAWN BY H.HASEGAWA	DATE 1993/07/09
CHECKED BY H.HIRAMOTO	DATE 1993/07/09
APPROVED BY M.FUKUSHIMA	DATE 1993/07/09
MATERIAL NO.	
SEE CHART	

SCALE 5:1	DESIGN UNITS METRIC	THIRD ANGLE PROJECTION
TITLE 0.62 DIA CRIMP MALE TERM		
DOCUMENT NO. SD-1854*		SHEET NO. 1 OF 1
THIS DRAWING CONTAINS INFORMATION THAT IS PROPRIETARY TO MOLEX ELECTRONIC TECHNOLOGIES, LLC AND SHOULD NOT BE USED WITHOUT WRITTEN PERMISSION		

ニッケル (2 μm MIN.) 下地 金 (0.35 μm MIN.) GOLD (0.35 μm MIN.) OVER NICKEL (2 μm MIN.)	39-00-0337	I854GL	バラ端子 LOOSE
銅 (0.5 μm MIN.) 下地 錫 (0.9 μm MIN.) TIN (0.9 μm MIN.) OVER COPPER (0.5 μm MIN.)	39-00-0335	I854TL	バラ端子 LOOSE
メッキ PLATING	EDP.NO.	ENG.NO.	形状 FORM