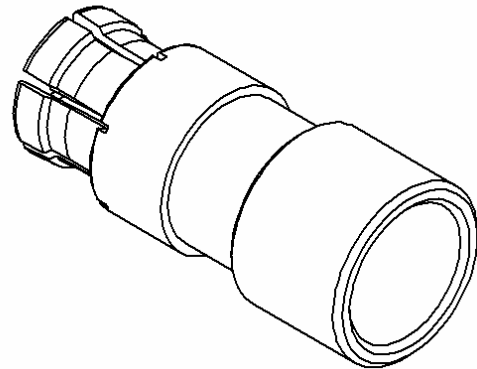
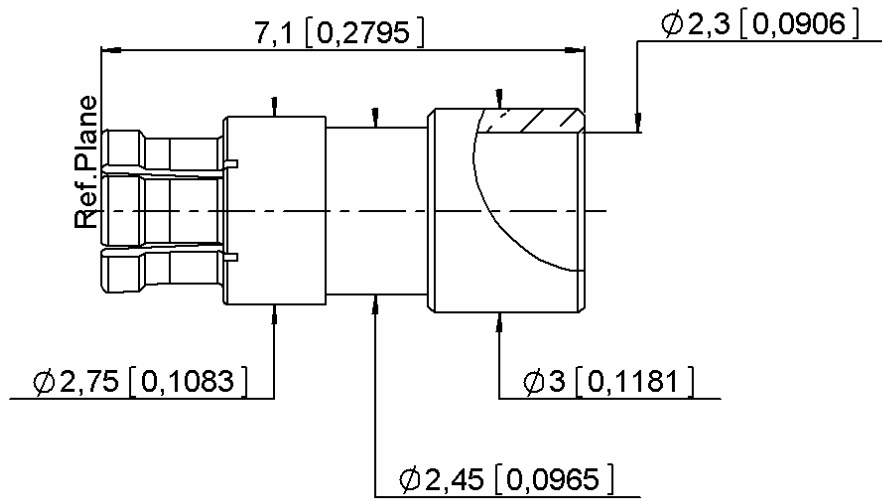
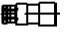


STRAIGHT FEMALE CONNECTOR
SOLDER CABLE .085

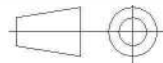
R201.052.000

Series : SMPM




Scale : 1/1

All dimensions are in mm.



| COMPONENTS | MATERIALS | PLATING (µm) |
|----------------|------------------|-----------------------|
| BODY | BERYLLIUM COPPER | GOLD 1.3 OVER NICKEL2 |
| CENTER CONTACT | BERYLLIUM COPPER | GOLD 1.3 OVER NICKEL2 |
| OUTER CONTACT | - | - |
| INSULATOR | PEEK | - |
| GASKET | - | - |
| OTHERS PARTS | - | - |
| - | - | - |
| - | - | - |

Issue : 1217 A

In the effort to improve our products, we reserve the right to make changes judged to be necessary.



PROHIBITION

STRAIGHT FEMALE CONNECTOR

R201.052.000

SOLDER CABLE .085

Series : SMPM

PACKAGING

| Standard | Unit | Other |
|------------|-------------------|-------------------|
| 100 | 'W' option | Contact us |

SPECIFICATION

ELECTRICAL CHARACTERISTICS

| | | |
|---------------------------------|-----------------------|--------------------------|
| Impedance | 50 | Ω |
| Frequency | 0-40 | GHz |
| VSWR | *1.35 + 0,0000 | x F(GHz) Maxi |
| Insertion loss | 0.12 | \sqrt{F} (GHz) dB Maxi |
| RF leakage | - (NA) | - F(GHz)) dB Maxi |
| Voltage rating | 335 | Veff Maxi |
| Dielectric withstanding voltage | 500 | Veff mini |
| Insulation resistance | 5000 | M Ω mini |

CABLE ASSEMBLY

| Stripping | a | b | c | d | e | f |
|-----------|------|------|------|------|------|------|
| mm | 1,30 | 0,00 | 0,00 | 0,00 | 0,00 | 0,00 |

Assembly instruction :

Recommended cable(s)
RG 405
SHF2.4M

Characteristics indicated on this data sheet are those that can be achieved with the highest performance cable. Intrinsic limitations of the cable may diminish the performance of the assembly

Cable retention

- pull off **130** N mini
- torque **NA** N.cm

MECHANICAL CHARACTERISTICS

| | | |
|----------------------------|------------|-----------|
| Center contact retention | | |
| Axial force – Mating end | 6.7 | N mini |
| Axial force – Opposite end | 6.7 | N mini |
| Torque | NA | N.cm mini |

TOOLING

| Part Number | Description | Hexagon |
|--------------|-------------------------------|---------|
| . | . | . |
| R282.743.110 | POSITIONER FOR SOLDERING SMPM | |
| R282.740.020 | SOLDERING MOUNTING | |

| | | |
|--------------------|---------------|------|
| Recommended torque | | |
| Mating | NA | N.cm |
| Panel nut | NA | N.cm |
| Clamp nut | NA | N.cm |
| A/F clamp nut | 0,0000 | mm |

| | | |
|-------------|---------------|-------------|
| Mating life | 500 | Cycles mini |
| Weight | 0,1700 | g |

OTHER CHARACTERISTICS

*VSWR 1.15 TO 26.5 GHz

ENVIRONMENTAL

| | | |
|-----------------------|-----------------|--------------|
| Operating temperature | -40/+125 | $^{\circ}$ C |
| Hermetic seal | NA | Atm.cm3/s |
| Panel leakage | NA | |

Issue : 1217 A

In the effort to improve our products, we reserve the right to make changes judged to be necessary.

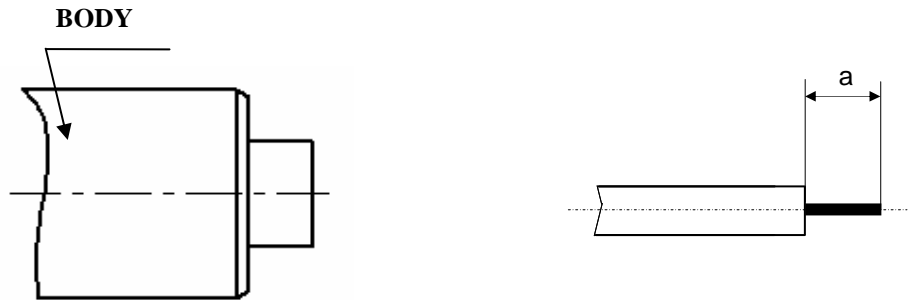


STRAIGHT FEMALE CONNECTOR
SOLDER CABLE .085

R201.052.000

Series : SMPM

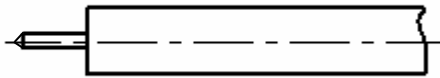
COMPONENT



We recommend a cable thermal preconditioning before assembly

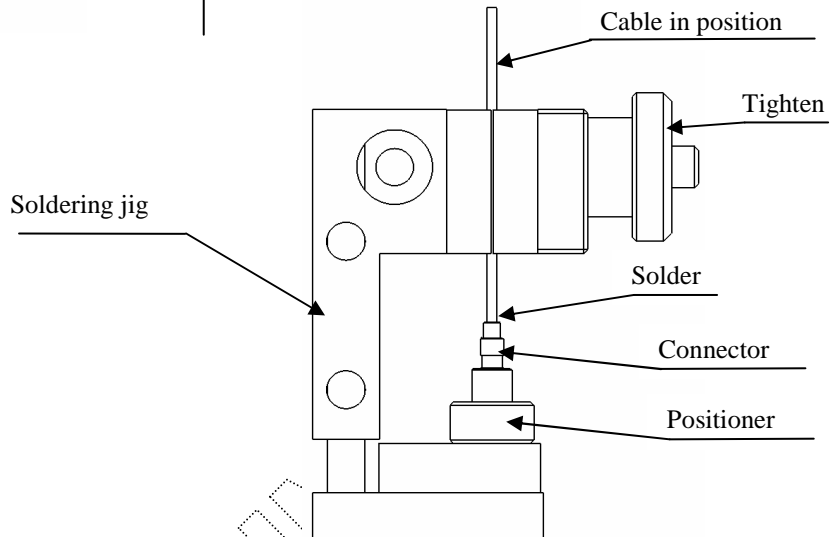
1

- Strip the cable.
- Trim the cable inner conductor.
- Clean the cable



2

- Slide body into the positioner.
- Introduce the cable into the connector body until it stops.
- Place the sub assembly into the assembly and tighten it .
- Solder the body onto the cable.
- After cooling remove cable assembly from the jig.



Issue : 1217 A

In the effort to improve our products, we reserve the right to make changes judged to be necessary.



PRELIMINARY