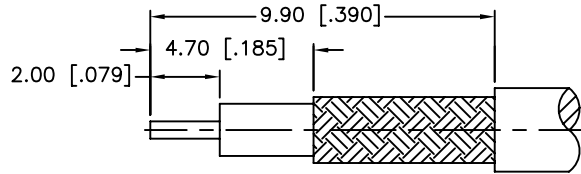
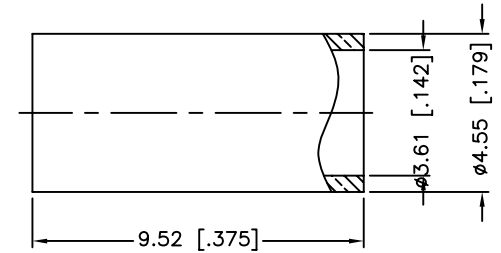
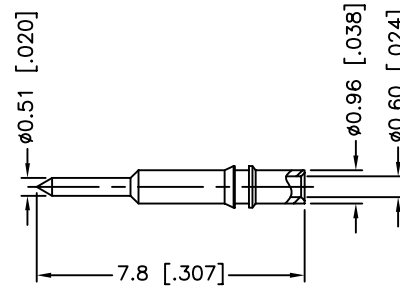
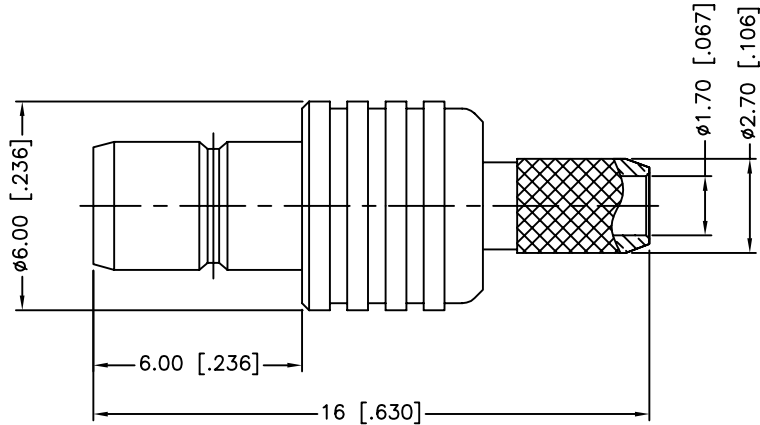


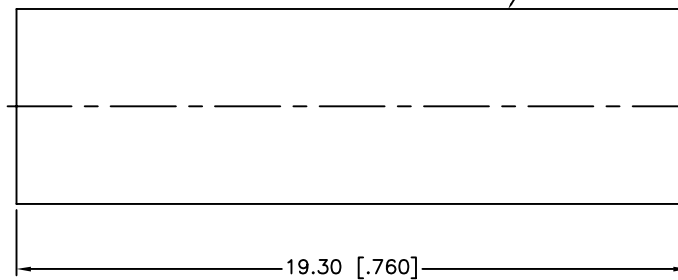
REV.	DATE	ECR NO.	DESCRIPTION
NC	12/17/09	XXXXXX	INITIAL RELEASE



RECOMMENDED
CABLE STRIPPING DIM'S



HEAT SHRINK TUBING



1. CRIMPED FERRULE
HEX CRIMP SIZE .151"
2. CRIMPED CONTACT PIN
SQ. CRIMP SIZE 0.7mm

DESCRIPTION	MATERIAL	FINISH	QTY	UNLESS OTHERWISE SPECIFIED DIMENSIONS ARE IN MILLIMETERS. DIMENSIONS IN [] ARE IN INCHES AND FOR CUSTOMER REFERENCE ONLY.	APPROVALS	DATE	Amphenol Connex			
9			1	UNLESS OTHERWISE SPECIFIED TOLERANCES FOR MILLIMETERS ARE: 0.5 - 8mm ± 0.20mm 8 - 30mm ± 0.40mm 30 - 120mm ± 0.50mm	DRAWN C.WANG	12/17/09	PART DESCRIPTION SMB CRIMP JACK (FOR RG-316U/D)			
8		1	UNLESS OTHERWISE SPECIFIED TOLERANCES FOR INCHES ARE: .020 - .315 = ± 0.007" .315 - 1.180 = ± 0.015" 1.180 - 4.724 = ± 0.020"							
7	HEAT SHRINK TUBING	BLACK	1	UNLESS OTHERWISE SPECIFIED TOLERANCES FOR INCHES ARE: .020 - .315 = ± 0.007" .315 - 1.180 = ± 0.015" 1.180 - 4.724 = ± 0.020"	CHECKED		PART NO. 142182			
6	FERRULE	COPPER	1		ISSUED		DWG. NO. 142182.DWG			
5	CONTACT PIN	BRASS	1	DO NOT SCALE DRAWING	SHEET	1 OF 1	REV.	NC	SCALE	NA
4	BARREL	BRASS	1		CAD FILE	C:/CONNEX/142182.DWG	SIZE	A		
3	INSULATOR	PTFE	1							
2	INSULATOR	PTFE	1							
1	BODY	BRASS	1							