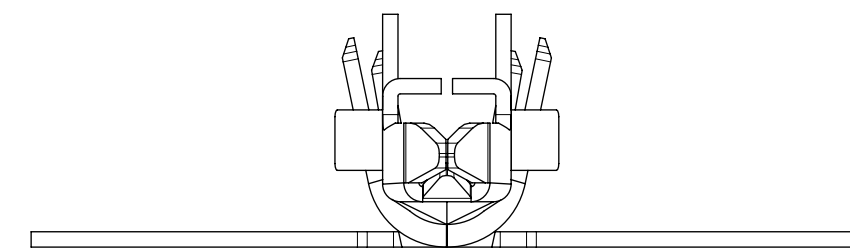


PART LEGEND

| | | |
|--------------------------|--|----------------------------------|
| 203070- * * * * | | FORM |
| SERIES | | 1 = CHAIN 2 = LOOSE |
| WIRE GAGE (INS OD RANGE) | | PARTNUMBER |
| 1 = 16 (Ø1.98-2.55) | | 4 = FINISHED GOODS |
| 2 = 16 (Ø2.55-3.14) | | |
| 3 = 18-20 (Ø1.42-2.10) | | PLATING |
| 4 = 18-20 (Ø2.10-2.85) | | 1 = GOLD (POST PLATE) |
| 5 = 22-24 (Ø1.07-1.65) | | 2 = TIN OVER NICKEL (POST PLATE) |
| 6 = 22-24 (Ø1.65-2.38) | | |



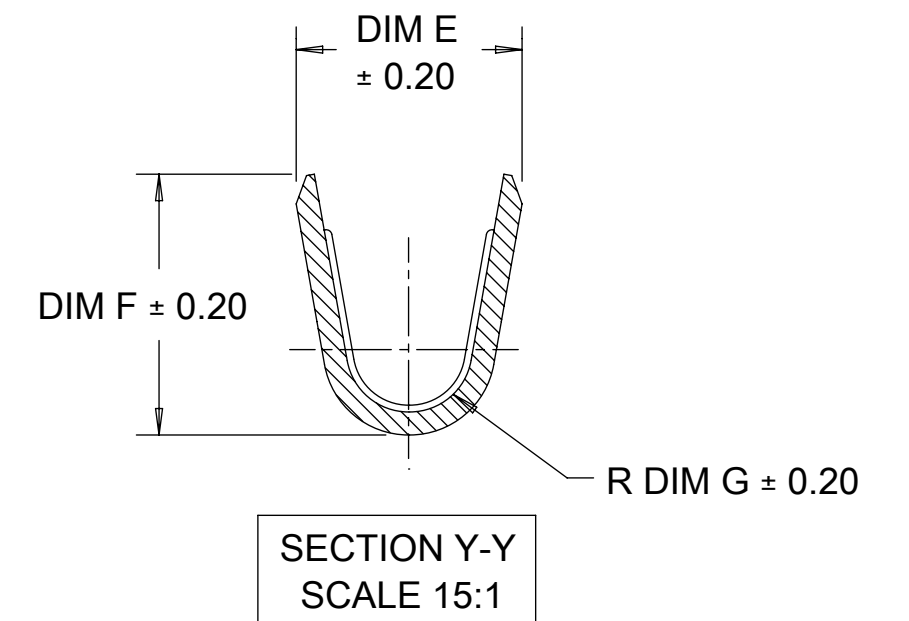
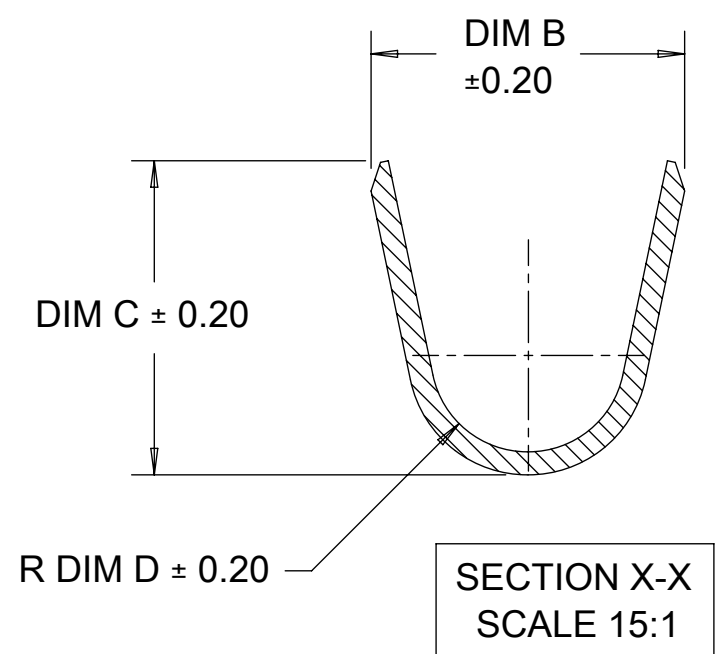
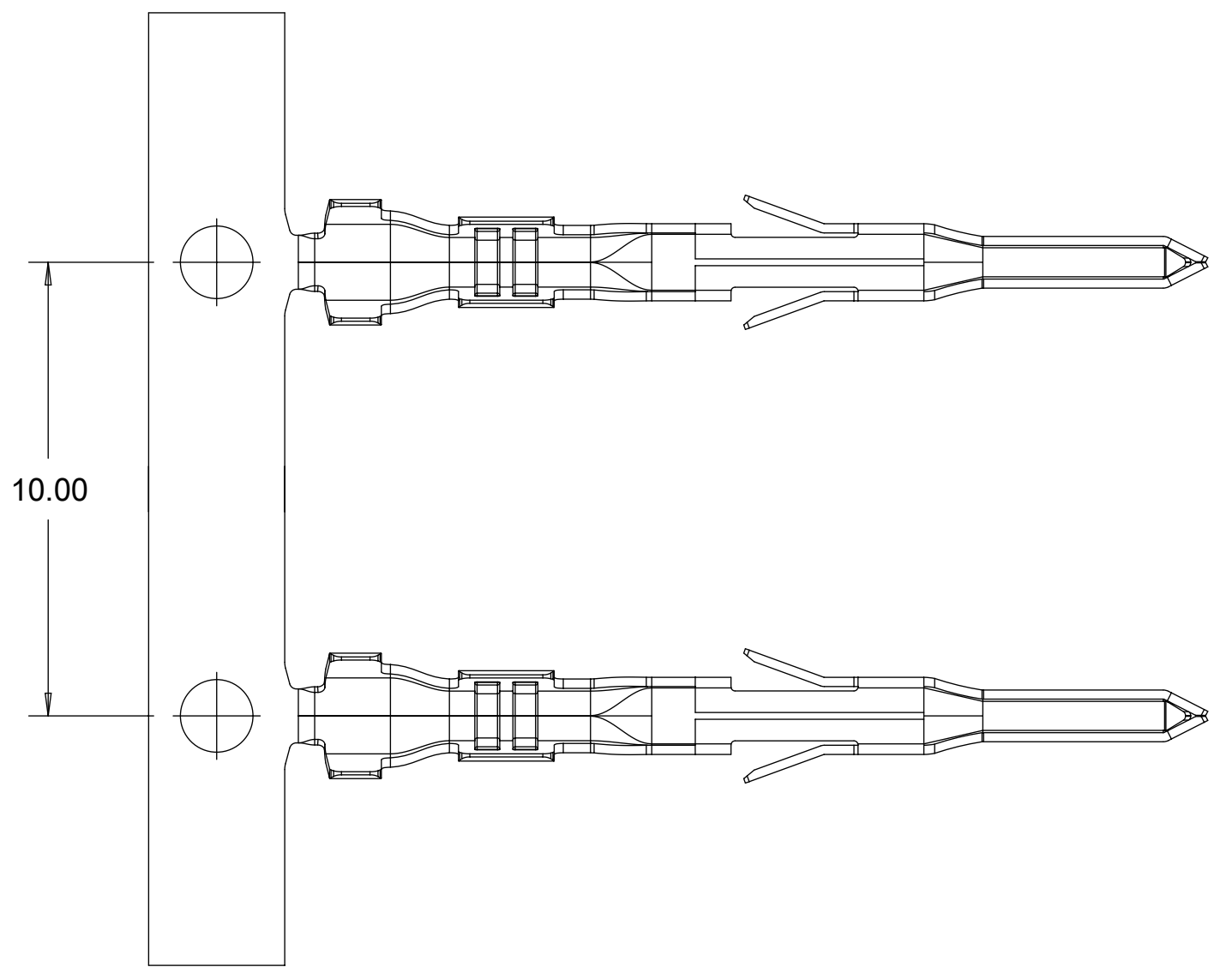
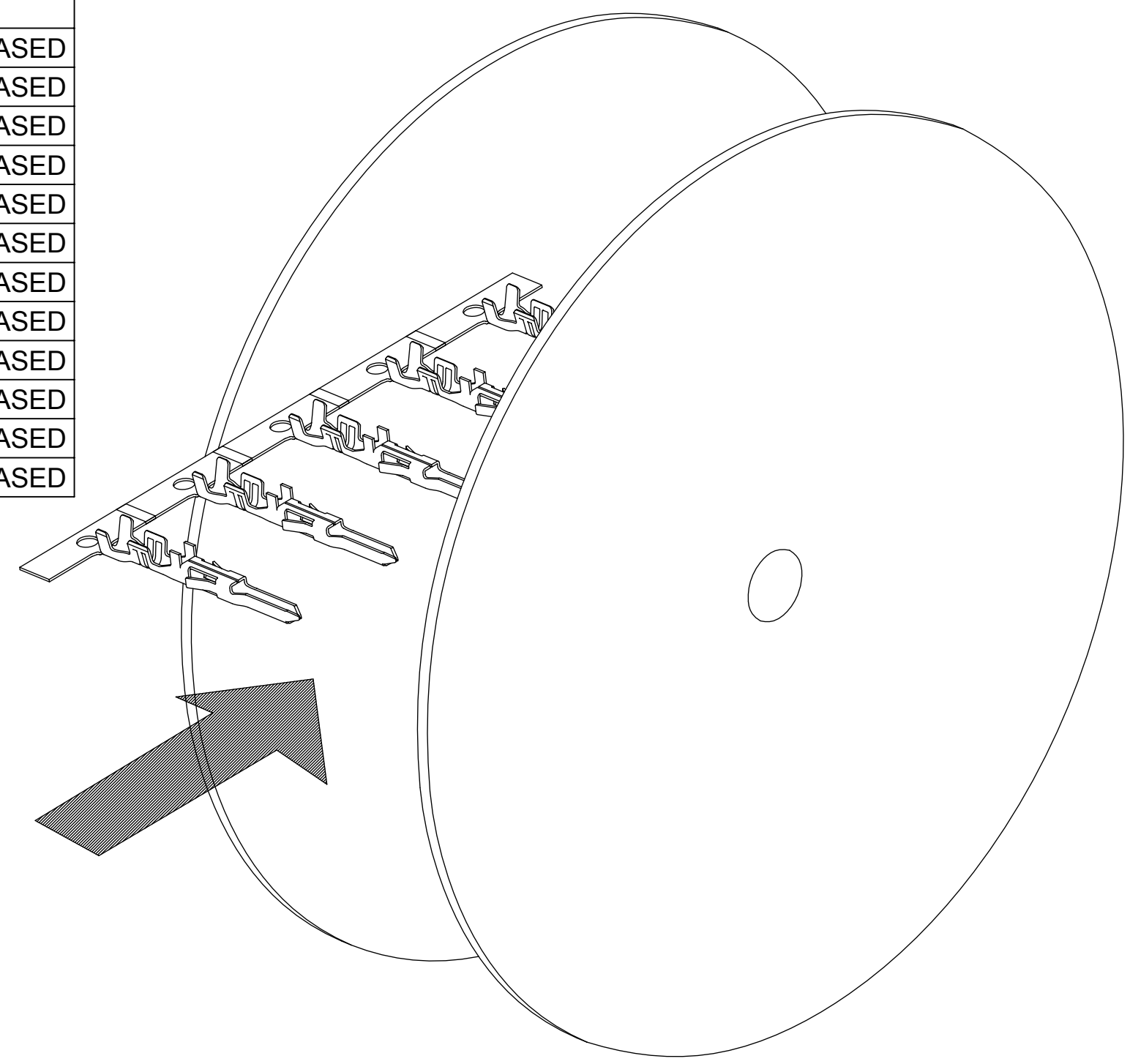
NOTES:

- MATERIAL:
HIGH CONDUCTIVITY COPPER ALLOY
- POST PLATED:
A) 30 µin/(0.75µm) MIN. SELECT GOLD IN THE CONTACT AREA, 100µin/(2.5µm) MIN. SELECT MATTE TIN IN THE CRIMP AREA OVER 50 µin/1.25 MIN. NICKEL OVERALL.
B) 100 µin/(2.50µm) MIN. OVERALL BRIGHT TIN, 50 µin/1.25 MIN. NICKEL OVERALL.
- PRODUCT SPECIFICATION: 2029880001-PS
APPLICATION SPECIFICATION: AS-172718-0000
- THIS TERMINAL TO BE USED WITH HOUSING SERIES 172762 AND 172767.
- THIS TERMINAL MATES WITH FEMALE CRIMP TERMINAL SERIES 202988.
- PACKAGING: REELS TO BE PACKED PER 2030700002-PK
LOOSE TERMINALS PER 2030700003-PK
- PART CONFORMS TO CLASS 'B' REQUIREMENTS OF COSMETIC SPEC PS-45499-002.
- WHEN TERMINALS ARE INSTALLED IN THE HOUSING THE WIRE ARE TO BE DRESSED IN SUCH A MANNER TO ALLOW THE TERMINALS TO FLOAT FREELY IN THE HOUSING POCKET
- THIS TERMINALS IS DESIGNED FOR SINGLE WIRE CRIMPING.

| | | | | | | | | | |
|---|--|------------------------|--|-------------------------------|--|--------|--|---|--|
| THIS DRAWING CONTAINS INFORMATION THAT IS PROPRIETARY TO MOLEX ELECTRONIC TECHNOLOGIES, LLC AND SHOULD NOT BE USED WITHOUT WRITTEN PERMISSION | | | | | | | | | |
| DIMENSION UNITS | | SCALE | | CURRENT REV DESC: | | | | molex | |
| mm | | NTS | | | | | | | |
| GENERAL TOLERANCES (UNLESS SPECIFIED) | | | | EC NO: 746659 | | | | MALE CRIMP TERMINAL MINI-FIT TPA 2.0 | |
| ANGULAR TOL ± ° | | | | DRWN: JERRYW8 2023/04/19 | | | | | |
| 4 PLACES ± | | | | CHK'D: XQZHANG 2023/04/21 | | | | PRODUCT CUSTOMER DRAWING | |
| 3 PLACES ± | | | | APPR: XQZHANG 2023/04/21 | | | | | |
| 2 PLACES ± 0.2 | | | | INITIAL REVISION: | | | | DOCUMENT NUMBER | |
| 1 PLACE ± 0.2 | | | | DRWN: MRAMAKRISHNA 2017/02/17 | | | | | |
| 0 PLACES ± | | | | APPR: ISHWARG 2017/05/15 | | | | 2030700001 | |
| DRAFT WHERE APPLICABLE MUST REMAIN WITHIN DIMENSIONS | | THIRD ANGLE PROJECTION | | DRAWING | | SERIES | | MATERIAL NUMBER | |
| | | | | C-SIZE | | 203070 | | SEE TABLE | |
| | | | | | | | | CUSTOMER | |
| | | | | | | | | GENERAL MARKET | |
| | | | | | | | | SHEET NUMBER | |
| | | | | | | | | 1 OF 2 | |

| FORM | FINISHED GOODS PART NUMBER FOR GOLD PLATING | FINISHED GOODS PART NUMBER FOR TIN PALTING | BASE, MAT'L | WIRE AWG | WIRE OD RANGE | DIM B | DIM C | DIM D | DIM E | DIM F | DIME G | DIM H | STATUS | |
|-------|---|--|--------------------------------|--------------------------------|---------------|-----------|-------|-------|-------|-------|--------|-------|----------|----------|
| CHAIN | 203070-1141 | 203070-1241 | HIGH CONDUCTIVITY COPPER ALLOY | 16 | 1.98-2.55 | 3.27 | 3.43 | 1.00 | 2.35 | 2.90 | 0.70 | 2.11 | RELEASED | |
| | 203070-2141 | 203070-2241 | | | 2.55-3.14 | 3.74 | 3.66 | 1.43 | | | | 1.91 | RELEASED | |
| | 203070-3141 | 203070-3241 | | 18-20 | 1.42-2.10 | 2.77 | 2.77 | 0.85 | 2.00 | 2.30 | 0.55 | 2.11 | RELEASED | |
| | 203070-4141 | 203070-4241 | | | 2.10-2.85 | 3.36 | 3.37 | 1.25 | | | | 2.11 | RELEASED | |
| | 203070-5141 | 203070-5241 | | 22-24 | 1.07-1.65 | 2.33 | 2.27 | 0.70 | 1.68 | 1.65 | 0.40 | 2.11 | RELEASED | |
| | 203070-6141 | 203070-6241 | | | 1.65-2.38 | 3.14 | 3.09 | 1.00 | | | | 2.11 | RELEASED | |
| LOOSE | 203070-1142 | 203070-1242 | | HIGH CONDUCTIVITY COPPER ALLOY | 16 | 1.98-2.55 | 3.27 | 3.43 | 1.00 | 2.35 | 2.90 | 0.70 | 2.11 | RELEASED |
| | 203070-2142 | 203070-2242 | | | | 2.55-3.14 | 3.74 | 3.66 | 1.43 | | | | 1.91 | RELEASED |
| | 203070-3142 | 203070-3242 | | | 18-20 | 1.42-2.10 | 2.77 | 2.77 | 0.85 | 2.00 | 2.30 | 0.55 | 2.11 | RELEASED |
| | 203070-4142 | 203070-4242 | | | | 2.10-2.85 | 3.36 | 3.37 | 1.25 | | | | 2.11 | RELEASED |
| | 203070-5142 | 203070-5242 | | | 22-24 | 1.07-1.65 | 2.33 | 2.27 | 0.70 | 1.68 | 1.65 | 0.40 | 2.11 | RELEASED |
| | 203070-6142 | 203070-6242 | | | | 1.65-2.38 | 3.14 | 3.09 | 1.00 | | | | 2.11 | RELEASED |

| FINISHED GOODS PART NUMBER FOR GOLD PLATING | FINISHED GOODS PART NUMBER FOR TIN PALTING | COMBINATION WIRE AWG |
|---|--|----------------------|
| 203070-4141 | 203070-4241 | 22+22 AWG |



| | | | | | | | | | |
|---|--|------------------------|--|-------------------------------|--|--------|--|---|--|
| THIS DRAWING CONTAINS INFORMATION THAT IS PROPRIETARY TO MOLEX ELECTRONIC TECHNOLOGIES, LLC AND SHOULD NOT BE USED WITHOUT WRITTEN PERMISSION | | | | | | | | | |
| DIMENSION UNITS | | SCALE | | CURRENT REV DESC: | | | | | |
| mm | | NTS | | | | | | | |
| GENERAL TOLERANCES (UNLESS SPECIFIED) | | | | EC NO: 746659 | | | | MALE CRIMP TERMINAL MINI-FIT TPA 2.0 | |
| ANGULAR TOL ± ° | | | | DRWN: JERRYW8 2023/04/19 | | | | | |
| 4 PLACES ± | | | | CHK'D: XQZHANG 2023/04/21 | | | | PRODUCT CUSTOMER DRAWING | |
| 3 PLACES ± | | | | APPR: XQZHANG 2023/04/21 | | | | | |
| 2 PLACES ± 0.2 | | | | INITIAL REVISION: | | | | DOCUMENT NUMBER 2030700001 | |
| 1 PLACE ± 0.2 | | | | DRWN: MRAMAKRISHNA 2017/02/17 | | | | | |
| 0 PLACES ± | | | | APPR: ISHWARG 2017/05/15 | | | | DOC TYPE DOC PART REVISION PSD 000 A6 | |
| DRAFT WHERE APPLICABLE MUST REMAIN WITHIN DIMENSIONS | | THIRD ANGLE PROJECTION | | DRAWING | | SERIES | | SHEET NUMBER | |
| | | | | C-SIZE | | 203070 | | 2 OF 2 | |

| | | | |
|-----------------|----|--------------|---------------------|
| DOCUMENT STATUS | P1 | RELEASE DATE | 2023/04/21 07:41:23 |
|-----------------|----|--------------|---------------------|