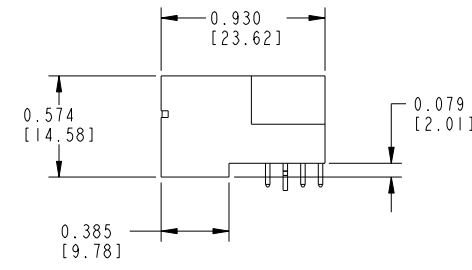
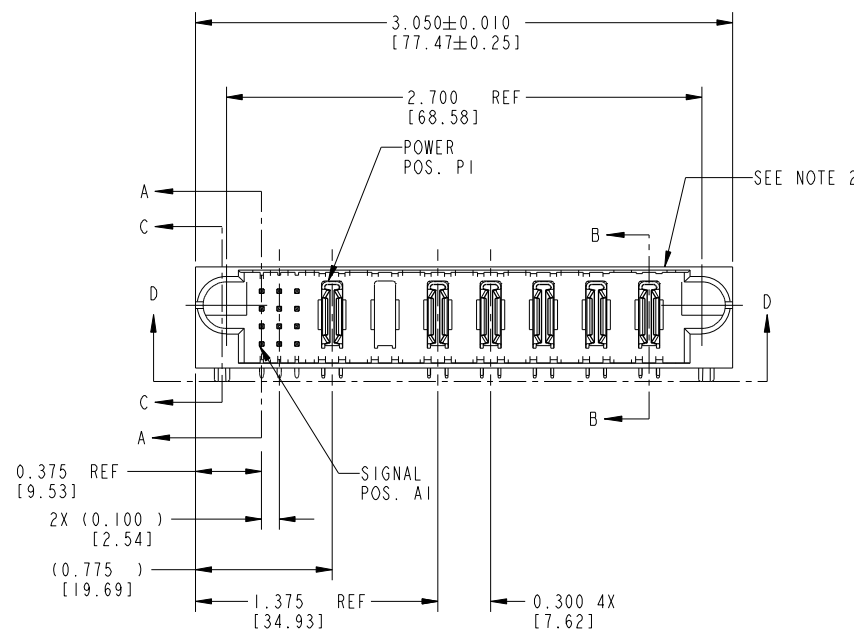
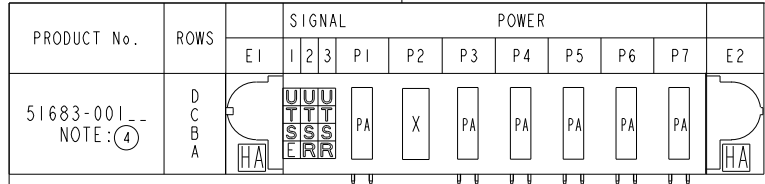


Tous droits strictement reserves. Reproduction ou communication a des tiers interdite sous quelque forme que ce soit sans autorisation écrite du propriétaire. Propriete de c FCI. Droits de reproduction FCI.



All rights strictly reserved. Reproduction or issue to third parties in any form whatever is not permitted without written authority from the proprietor. Property of FCI. Copyright FCI.



| CODE | DIM "M" MATING LENGTH | CONTACT TYPE |
|------|-----------------------|--------------|
| PA | N/A [N/A] | POWER |
| E | 0.220 [5.59] | SIGNAL |
| S | 0.270 [6.86] | SIGNAL |
| T | 0.270 [6.86] | SIGNAL |
| U | 0.270 [6.86] | SIGNAL |
| R | 0.270 [6.86] | SIGNAL |
| HA | N/A [N/A] | HOLD-DOWN |
| X | OMMITTED | N/A |

| mat'l code | | | | SEE NOTES | | tolerances unless otherwise specified | | CUSTOMER COPY | |
|-------------|----------------|-----|----------|-----------|-----------------------|---------------------------------------|--|---------------|--|
| litr | ecn no. | dr | date | linear | .XX±.01/0.X±0.3 | projection | www.fciconnect.com | | |
| A | V02392 | JRW | 10-10-00 | | .XXX±.005/0.XX±0.13 | | title 12S + 7P RIGHT ANGLE SOLDER HEADER | | |
| B | V12544 | DAI | 02/20/02 | | .XXX±.0020/0.XXX±.051 | | product family PWRBLADE code 213 | | |
| C | V03-0571 | TAB | 05/28/03 | angles | 0°±2° | | size dwg no 51683 sheet 1 of 4 | | |
| D | DG05-0288 | CS | 08/18/05 | dr | S. ROYER 12/10/99 | INCH/MM | scale 1:1 | | |
| E | D606-0011 | CS | 01/09/06 | enrg | J. BROWN 12/10/99 | | | | |
| F | D608-0253 | SH | 09/12/08 | chr | J. BROWN 12/10/99 | | | | |
| | | | | appd | J. BROWN 01/18/00 | | | | |
| sheet index | revision sheet | F 1 | F 2 | F 3 | F 4 | | cage code 22526 | | |

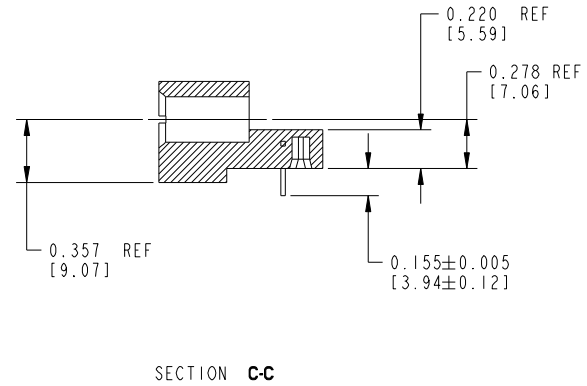
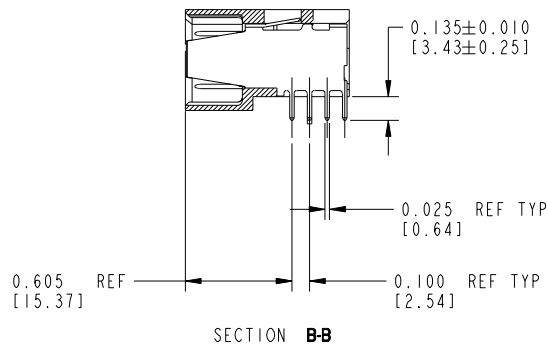
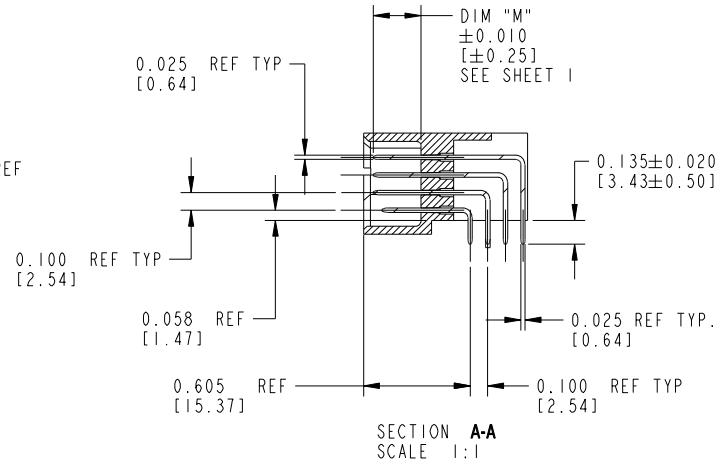
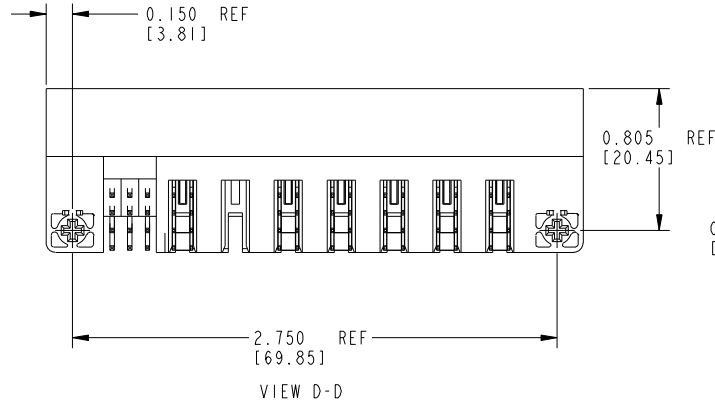
Pro/E

cage code 22526

Tous droits strictement réservés. Reproduction ou communication à des tiers interdite sous quelque forme que ce soit sans autorisation écrite du propriétaire. Propriété de c.FCI. Droits de reproduction FCI.

All rights strictly reserved. Reproduction or issue to third parties in any form whatever is not permitted without written authority from the proprietor. Property of FCI. Copyright FCI.

PRODUCT NUMBER
51683-001--
NOTE: ④



| | | | | | | | | | |
|--------------------------|----------------|----|------|---------------------------------------|----------------------|---------------|-----------|--|-----------------|
| mat'l code SEE NOTE 1 | | | | tolerances unless otherwise specified | | CUSTOMER COPY | | FCI www.fciconnect.com | |
| ltr | ecn no. | dr | date | linear | .XX±.01/.X±.3 | projection | | title 12S + 7P RIGHT ANGLE SOLDER HEADER | |
| F | | | | | .XXX±.005/.XX±.13 | | | product family PWRBLADE | code 213 |
| | | | | angles | .XXX±.0020/.XXX±.051 | scale 1:1 | size A | dwg no 51683 | sheet 2 OF 4 |
| | | | | dr | 0° ± 2° | | | | |
| | | | | enr | S. ROYER 12/10/99 | | | | |
| | | | | chr | J. BROWN 12/10/99 | | | | |
| | | | | appd | J. BROWN 01/18/00 | | | | |
| sheet index | revision sheet | | | | | | | | |

Pro/E

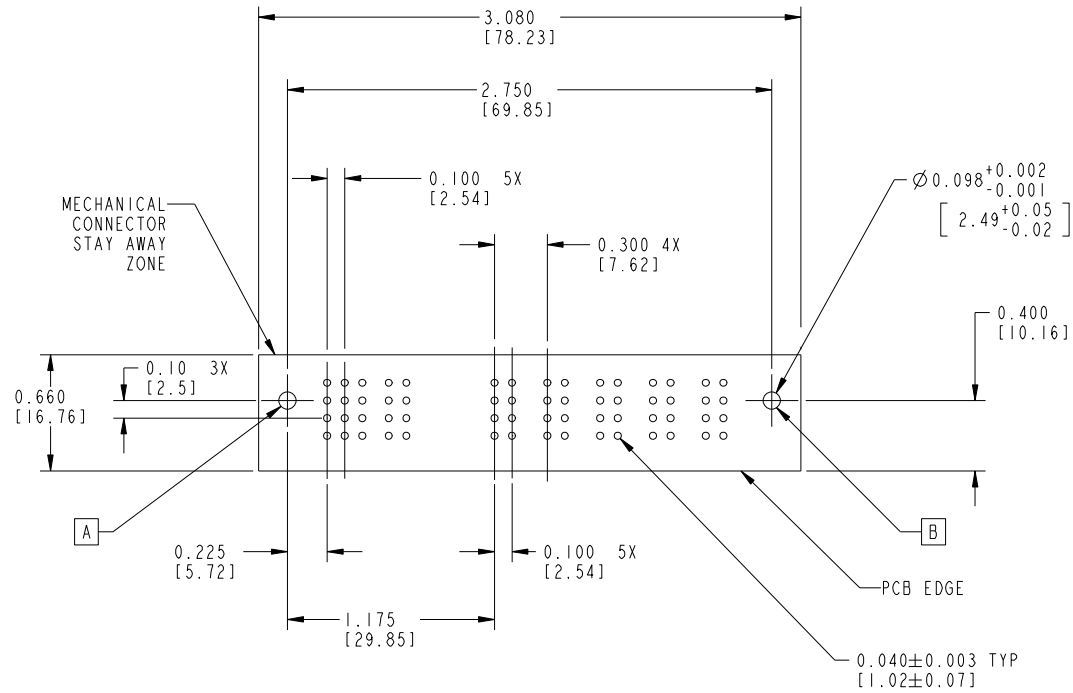
cage code 22526

Tous droits strictement reserves. Reproduction ou communication a des tiers interdite sous quelque forme que ce soit sans autorisation écrite du propriétaire. Propriete de c FCI. Droits de reproduction FCI.



All rights strictly reserved. Reproduction or issue to third parties in any form whatever is not permitted without written authority from the proprietor. Property of FCI. Copyright FCI.

PRODUCT NUMBER
51683-001--
NOTE: ④



RECOMMENDED PCB LAYOUT

| | | | | | | | | | |
|-------------|----------------|-----------|------|---------------------------------------|----------------------|---------------|----------------|---------------------------------------|--------|
| mat'l code | | SEE NOTES | | tolerances unless otherwise specified | | CUSTOMER COPY | | www.fciconnect.com | |
| ltr | ecn no. | dr | date | linear | .XX±.01/.X±.3 | projection | | title | |
| F | | | | angles | .XXX±.005/.XX±.13 | INCH/MM | | 12S + 7P RIGHT ANGLE SOLDER HEADER | |
| | | | | dr | .XXX±.0020/.XXX±.051 | scale | product family | PWRBLADE | code |
| | | | | enr | 0° ± 2° | 1:1 | size | dwg no | 213 |
| | | | | chr | S. ROYER 12/10/99 | | A | 51683 | sheet |
| | | | | appd | J. BROWN 12/10/99 | | | | 3 OF 4 |
| sheet index | revision sheet | | | | | | | | |

Pro/E

cage code 22526



All rights strictly reserved. Reproduction or issue to third parties in any form whatsoever is not permitted without written authority from the proprietor. Property of FCI. Copyright FCI.

Tous droits strictement reserves. Reproduction ou communication a des tiers interdite sous quelque forme que ce soit sans autorisation écrite du propriétaire. Propriete de c FCI. Droits de reproduction FCI.

A

B

PRODUCT NUMBER
51683-001--
NOTE: ④

CONNECTORS NOTES:

- ① HOUSING MATERIAL: UL 94 V-0 GLASS FILLED HIGH TEMP THERMO PLASTIC
SIGNAL PIN MATERIAL: COPPER ALLOY
POWER CONTACT MATERIAL: COPPER ALLOY
- ② "MANUFACTURER" NAME, P/N, AND DATE CODE TO APPEAR ON THIS SURFACE
- 3. PRODUCT SPECIFICATION GS-12-149
- ⚠ 4. PLATING:
SEE ITEM 1 & 2 IN PRINT 10064183 FOR PLATING SPEC OF 51683 AND 51683LF RESPECTIVELY

PCB NOTES:

- 5. ALL DIMENSIONS ARE BASIC UNLESS OTHERWISE SPECIFIED.
- 6. ALL THROUGH HOLES ARE LOCATED WITH A TRUE POSITION OF .004
- 7. ALL HOLE DIAMETERS ARE FINISHED HOLE SIZE
- 8. Ø0.098 THROUGH HOLES ARE UNPLATED
- 9. Ø.0453/1.151 DRILLED HOLES
PLATED WITH .0003/.007 MIN SnPb
OVER .001/1.03 to .003/.08 PLATING TO ACHIEVE
A .040±.003/1.02±.08 HOLE

| | | | | | | | | | |
|-------------|----------------|-----------|------|---------------------------------------|----------------------|------------|---|--------------------|--------|
| mat'l code | | SEE NOTES | | tolerances unless otherwise specified | | CUSTOMER | | | |
| ltr | ecn no. | dr | date | linear | .XX±.01/.X±.3 | COPY | | www.fciconnect.com | |
| F | | | | | .XXX±.005/.XX±.13 | projection | title 12S + 7P RIGHT ANGLE SOLDER HEADER | | |
| | | | | angles | .XXX±.0020/.XXX±.051 | | product family PWRBLADE code 213 | | |
| | | | | dr | 0°±2° | INCH/MM | size | dwg no | sheet |
| | | | | enr | S. ROYER 12/10/99 | scale | A | 51683 | 4 of 4 |
| | | | | chr | J. BROWN 12/10/99 | 1:1 | | | |
| | | | | appd | J. BROWN 01/18/00 | | | | |
| sheet index | revision sheet | | | | | | | | |

A

B

1 | 2

3 |

4

1 | 2

Pro/E

3 |

cage code 22526

4