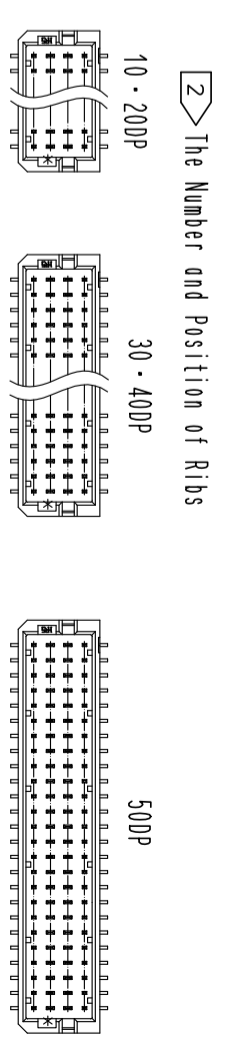
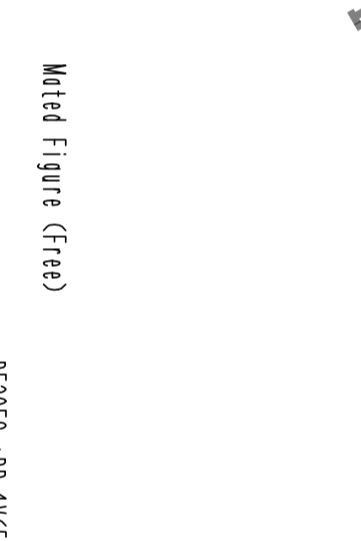
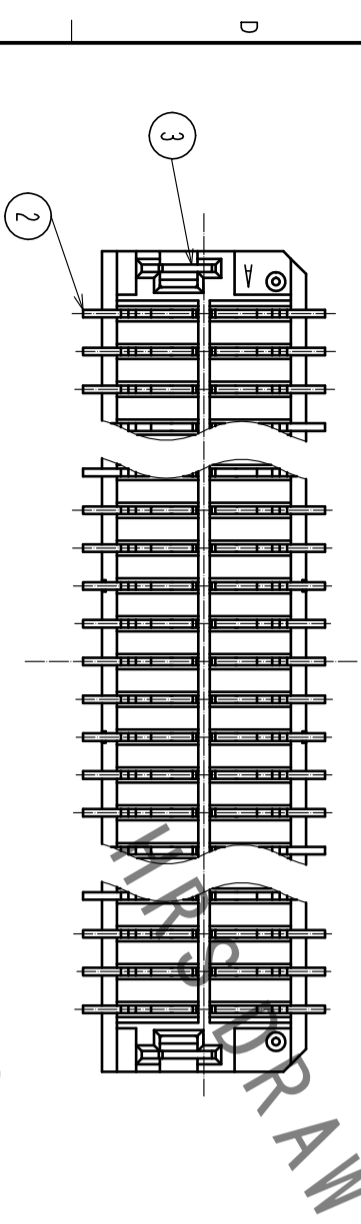
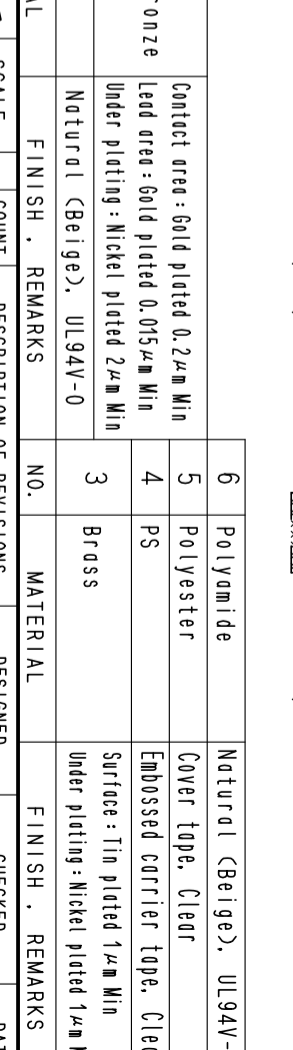
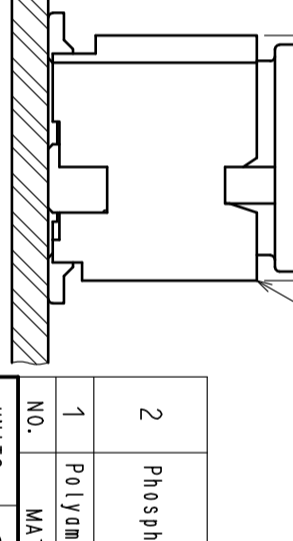
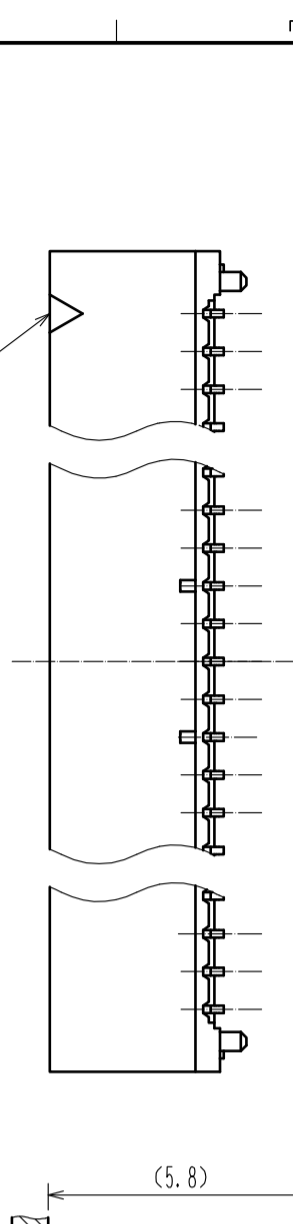


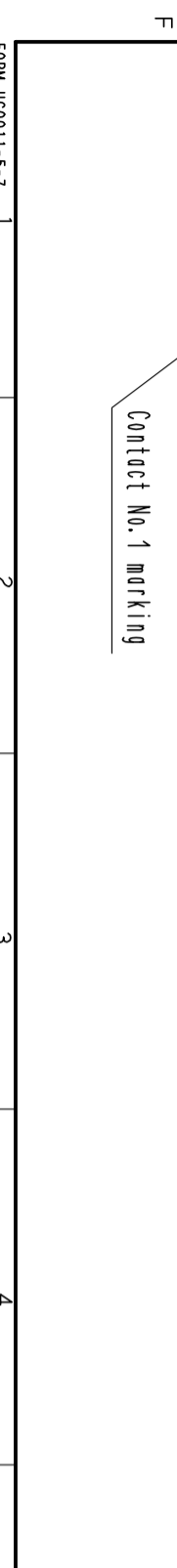
Part No.	HRS No.	Number of Contacts	A	B	C	D
DF20EG-10DP-1V(52)	CL686-0059-0-52	10	4.0	7.3	6.6	5.7
DF20EG-20DP-1V(52)	CL686-0060-0-52	20	9.0	12.3	11.6	10.7
DF20EG-30DP-1V(52)	CL686-0061-0-52	30	14.0	17.3	16.6	15.7
DF20EG-40DP-1V(52)	CL686-0062-0-52	40	19.0	22.3	21.6	20.7
DF20EG-50DP-1V(52)	CL686-0054-0-52	50	24.0	27.3	26.6	25.7



② The Number and Position of Ribs



Notes 1. Lead Co-Planarity shall be 0.1mm Max including metal reinforced fitting.
 ② The number and position of ribs are indicated for number of contacts.
 ③ Keep a pattern out of [hatched area]. It prevents from electric short.

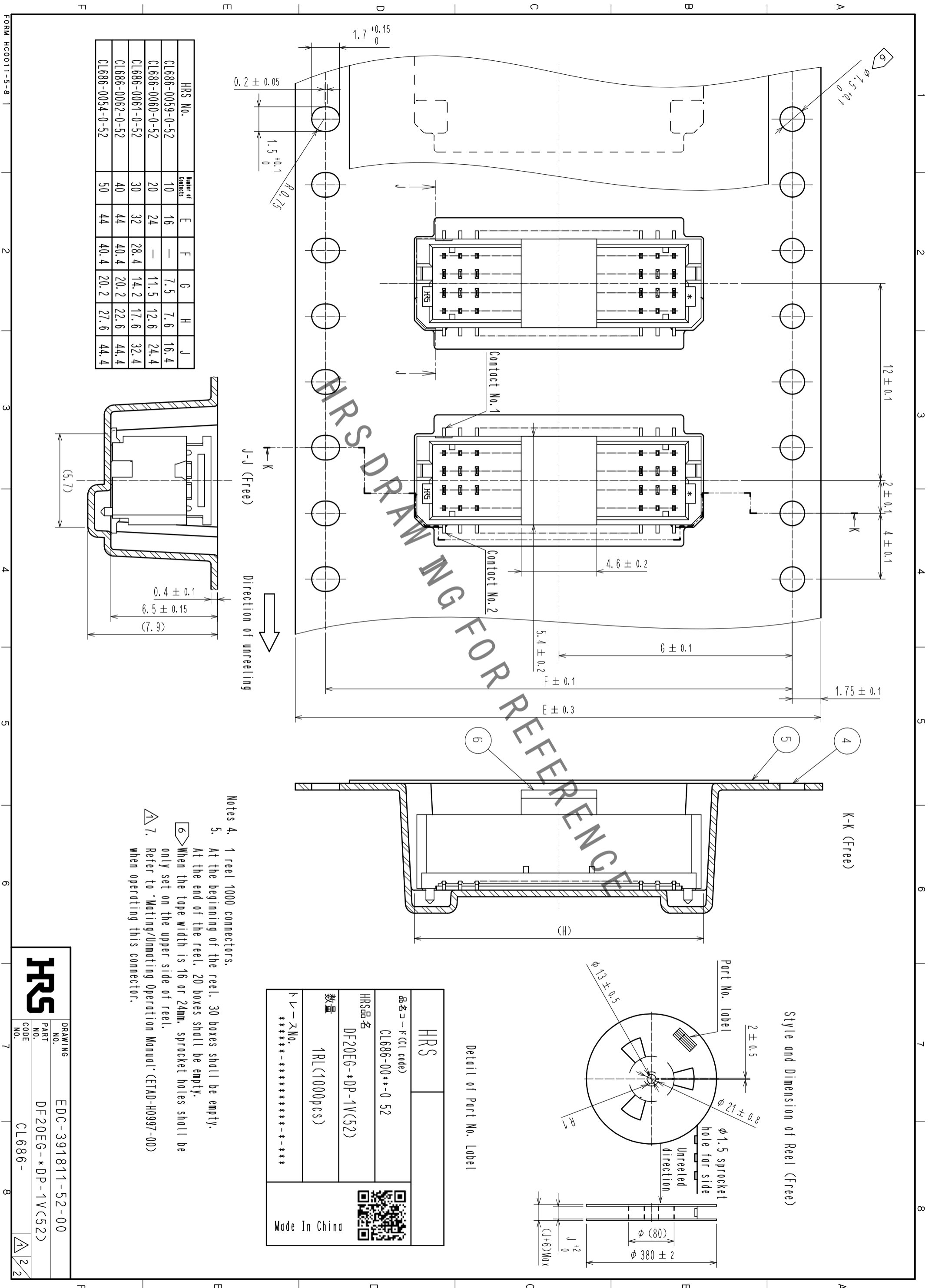


NO.	MATERIAL	FINISH	REMARKS	NO.	MATERIAL	FINISH	REMARKS
1	Polyamide	Natural (Beige).	UL94V-0	3	Brass	Under plating: Nickel plated 1μm Min	
2	Phosphor Bronze	Contact area: Gold plated 0.2μm Min Lead area: Gold plated 0.015μm Min Under plating: Nickel plated 2μm Min		4	PS	Surface: Tin plated 1μm Min Under plating: Nickel plated 1μm Min	
6	Polyamide	Natural (Beige).	UL94V-0				
5	Polyester	Cover tape, Clear					

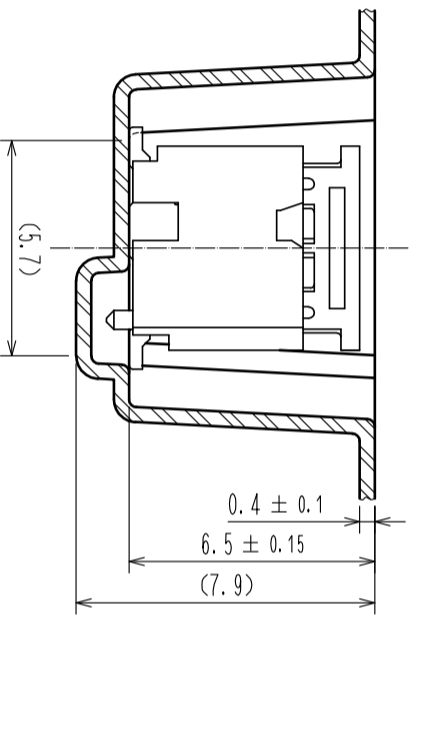
UNITS	SCALE	COUNT	DESCRIPTION OF REVISIONS	DESIGNED	CHECKED	DATE
mm	5 : 1	1	DIS-H-00005965	SN.MIWA	20200518	

APPROVED	CHECKED	DESIGNED	DRAWING	PART NO.	CODE
HS.OKAWA	SZ.ONO	SN.MIWA	20200213	DF20EG- *DP-1V(52)	CL686-

Approved: HS.OKAWA
 Checked: SZ.ONO
 Designed: SN.MIWA
 Drawing: 20200213
 Part No.: DF20EG- *DP-1V(52)
 Code: CL686-



HRS No.	Number of Contacts	E	F	G	H	J
CL686-0059-0-52	10	16	—	7.5	7.6	16.4
CL686-0060-0-52	20	24	—	11.5	12.6	24.4
CL686-0061-0-52	30	32	28.4	14.2	17.6	32.4
CL686-0062-0-52	40	44	40.4	20.2	22.6	44.4
CL686-0054-0-52	50	44	40.4	20.2	27.6	44.4



HRS	品名コード (CI code)	CL686-00**-0 52
HRS品名	DF20EG-*DP-1V(52)	
数量	1RL(1000pcs)	
メーカーNo.	*****-*****-*****	

Made In China

Detail of Part No. Label

Style and Dimension of Reel (Free)

HRS

DRAWING NO.	EDC-391811-52-00
PART NO.	DF20EG-*DP-1V(52)
CODE	CL686-