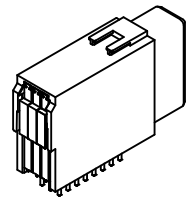
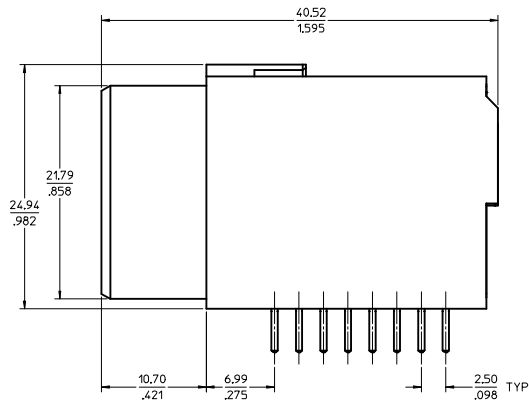
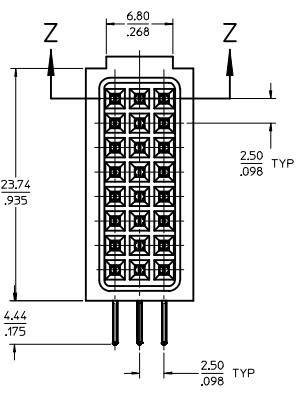
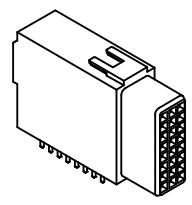
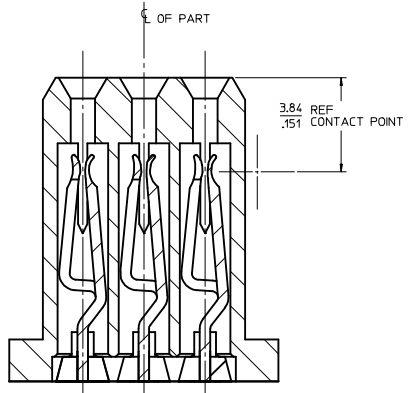
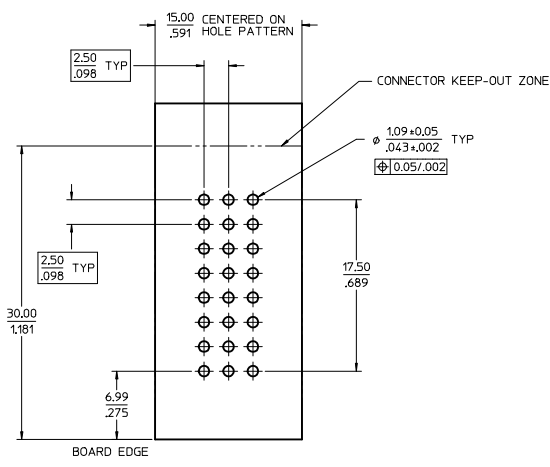
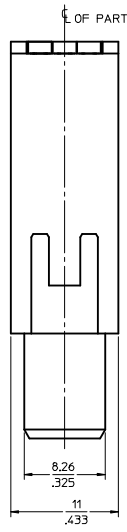


ASSEMBLY MATERIAL NUMBER	NUMBER OF CIRCUITS	DESCRIPTION
46225-5024	24	RIGHT ANGLE SIGNAL MODULE

- NOTES:
- MATERIALS:
 - HOUSING: 90% GLASS FILLED, LCP 94V-0, COLOR: BLACK
 - TERMINALS: COPPER ALLOY
 - PLATING: PER ES-88-228.
 - 0.75/30 μ INCH MIN. SELECT HARD GOLD IN CONTACT AREA WITH 2.50/100 μ INCH MIN. SELECT TIN IN TAIL AREA OVER 1.25/50 μ INCH MIN. NICKEL OVERALL
 - LUBRICATION: EB1 IN CONTACT AREA
 - SEE CHART FOR REFERENCE DOCUMENTS
 - MODULE IS DESIGNED FOR SOLDERING TO THE PCB
 - MODULE ASSEMBLY IS RoHS COMPLIANT
 - MODULES TO BE UL & CSA LISTED PER UL-1977
 - FINAL ASSEMBLY TO BE PACKAGED AND LABELED PER PACKAGING KIT DRAWING NUMBER PK-45841-500



REV CHRT & ADD NOTE IEC NO: UCF2008-0639 DRAWN: JUILLES 2007/09/27 CHKD: JUILLES 2007/09/27 APPR: APATEL 2007/10/03	QUALITY SYMBOLS	GENERAL TOLERANCES (UNLESS SPECIFIED)	DIMENSION STYLE	SCALE	DESIGN UNITS	THIRD ANGLE PROJECTION
	▽=0	4 PLACES ±.005	MM/IN	4:1	METRIC	ASSEMBLY-RECEPTACLE SIGNAL MODULE RIGHT ANGLE
	▽=0	3 PLACES ±.005				MOLEX INCORPORATED MATERIAL NO. SD-46225-100 DOCUMENT NO. 1 OF 1
	▽=0	2 PLACES ±0.13				
		1 PLACE ±0.25				
		ANGULAR ±1/2°				
		DRAFT WHERE APPLICABLE MUST REMAIN WITHIN DIMENSIONS				