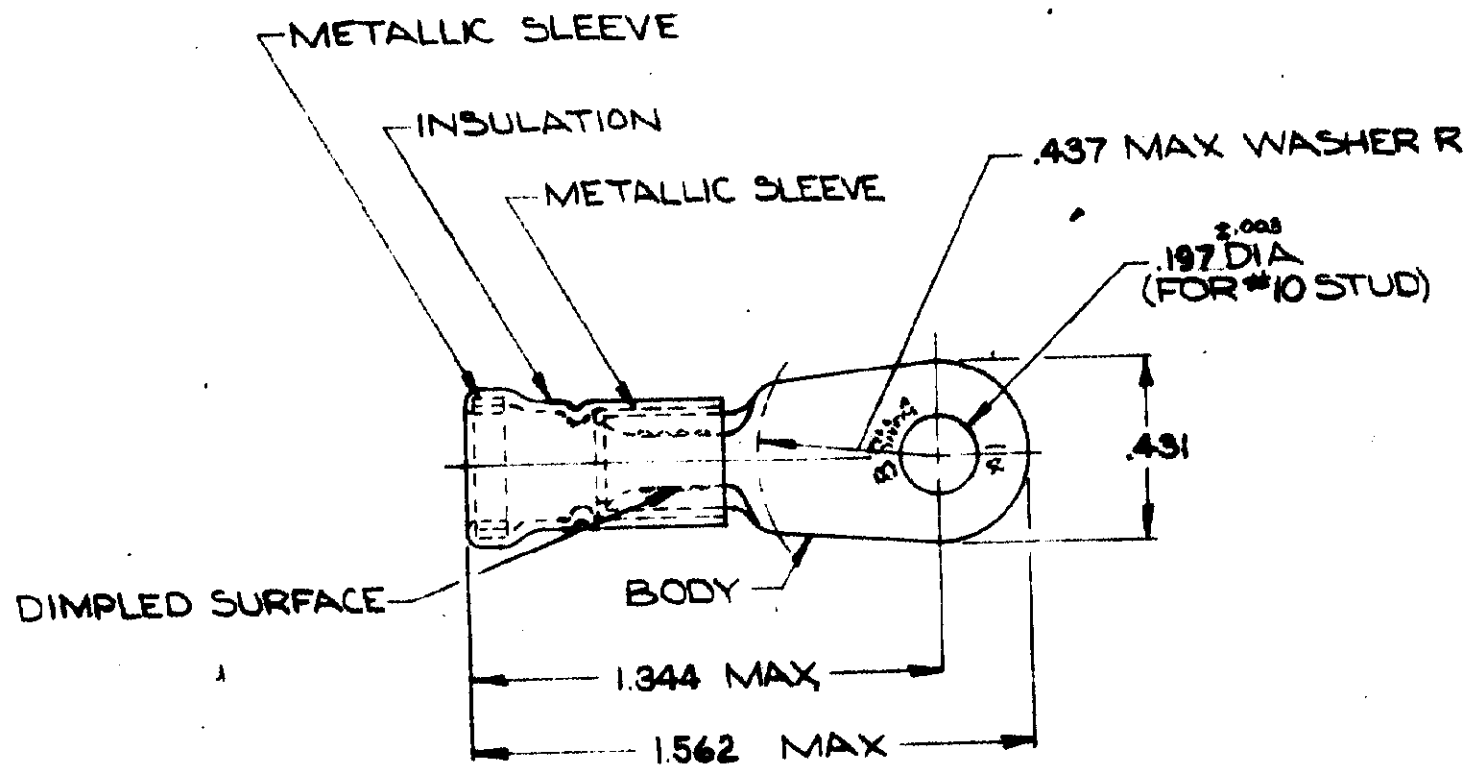


DRAWING MADE IN AMERICAN PROJECTION

© 1983 BY AMP INCORPORATED. ALL RIGHTS RESERVED. AMP PRODUCTS COVERED BY PATENTS AND/OR PATENTS PENDING.

REVISIONS				
ZONE	LTR	DESCRIPTION	DATE	APPROVED
E		REDRAWN & REVISED PG5563	1-6-70	JM
F		INACTIVATED 2-322128-1 P-7034	6-7-73	JM
G		ADDED 2-322128-2 P-7000	2-12-77	ZAB
H		REV PER P-8347	REB. 4/1/77	JM
J		OBSOLETE 2-1 PER P.9222	DOT 3-15-82	DJM
K		REV G-4680	THS 5-9-88	JT



TONGUE MATERIAL THICKNESS = .040 ±.003  
FOR .298 MAX WIRE INS DIA

TABLE I

1	WIRE TERMINAL	SEE TABLE II	BODY: COPPER (QQ-C-576)	
			FINISH: (SEE TABLE II)	
			INSULATION: PVC COLOR: RED	
			METALLIC SLEEVE: COPPER (QQ-C-576)	
		METALLIC BAND: STEEL QQ-S-698 (ASTM A109)		
		MATERIAL & FINISH		
QTY	DESCRIPTION	PART NO.	MATERIAL & FINISH	
UNLESS OTHERWISE SPECIFIED DIMENSIONS ARE IN INCHES TOLERANCES ON: DECIMALS ±.008 ANGLES ± 5°		CONTRACT NO.	AMP INCORPORATED HARRISBURG, PENNSYLVANIA	
MATERIAL		DR. Wayne Mullins 11-12-69	NAME WIRE TERMINAL AMPLI-BOND - RING TONGUE WIRE SIZE: 8	
SEE TABLE I.		CHK. M. Encarnacion 1-6-70	SIZE B	CODE IDENT NO. 00779
		APPD. Swahel 1-7-70	NUMBER	322128
		DESIGN APPD. M. Encarnacion 1-7-70	SCALE NTS	SHEET 1 OF 1
		OTHER APPD.	CUSTOMER DRAWING	

TABLE II

2-322128-1	GOLD PLATED (MIL-G-45204) TYPE II .00005 MIN. EXT. THK. OVER NICKEL PL. (QQ-N-290) .00003 MIN. EXT. THK.	—	OBSOLETE
322128	TIN PLATED (MIL-T-10727)	2-322128-2	
PART NO	FINISH	PART NO ON TAPE	