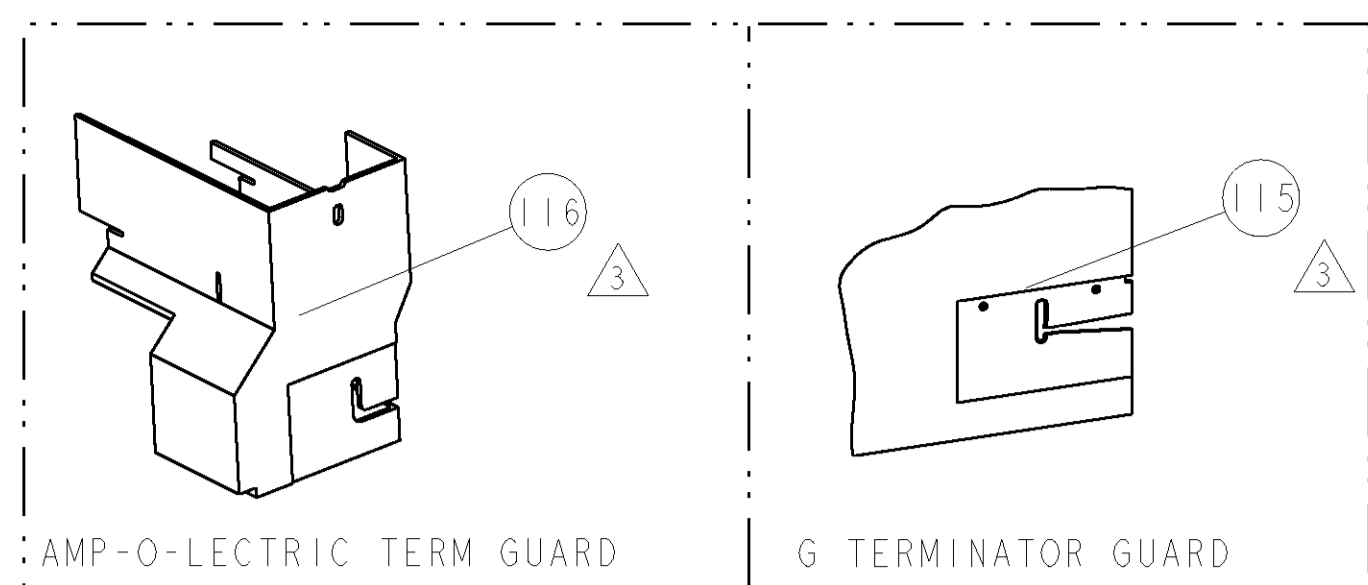


PART NUMBER	REV	FIRST USED	POWER UNIT	FEED TYPE	DESCRIPTION
1855204-1	C	122500-1	LEADMAKER	AIR FEED	CUTS CARRIER
1855204-2	C	565435-5	BENCH MODEL K	AIR FEED	CUTS CARRIER
1855204-3	C	354500-1	BENCH MODEL G	AIR FEED	CUTS CARRIER
1855204-6	C	122500-1	LEADMAKER	AIR FEED	CONTINUOUS CARRIER
7-1855204-7	A	-	-	-	SPARE PARTS

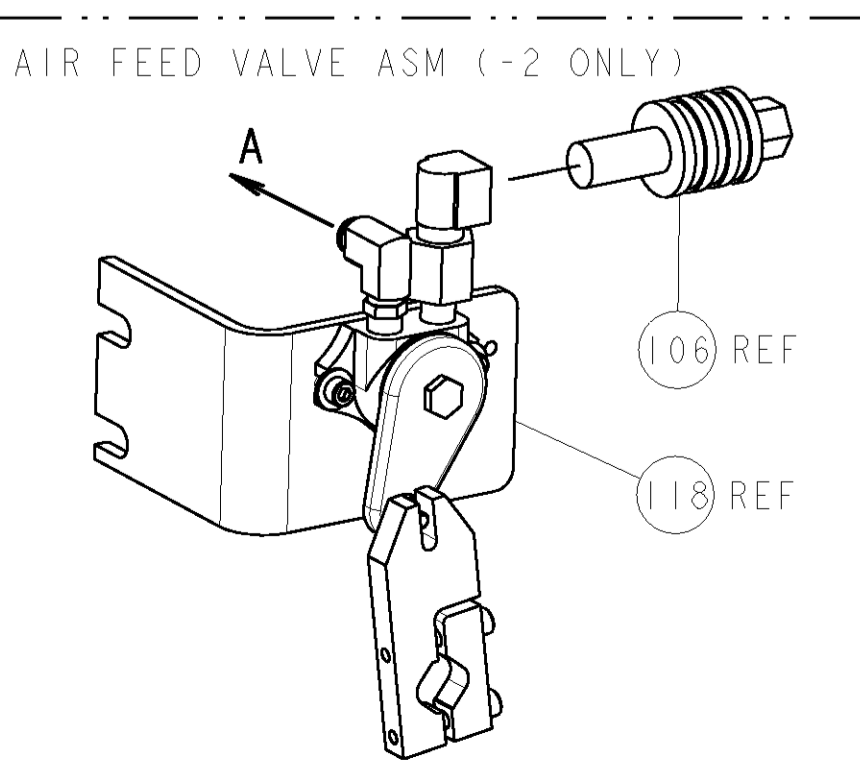
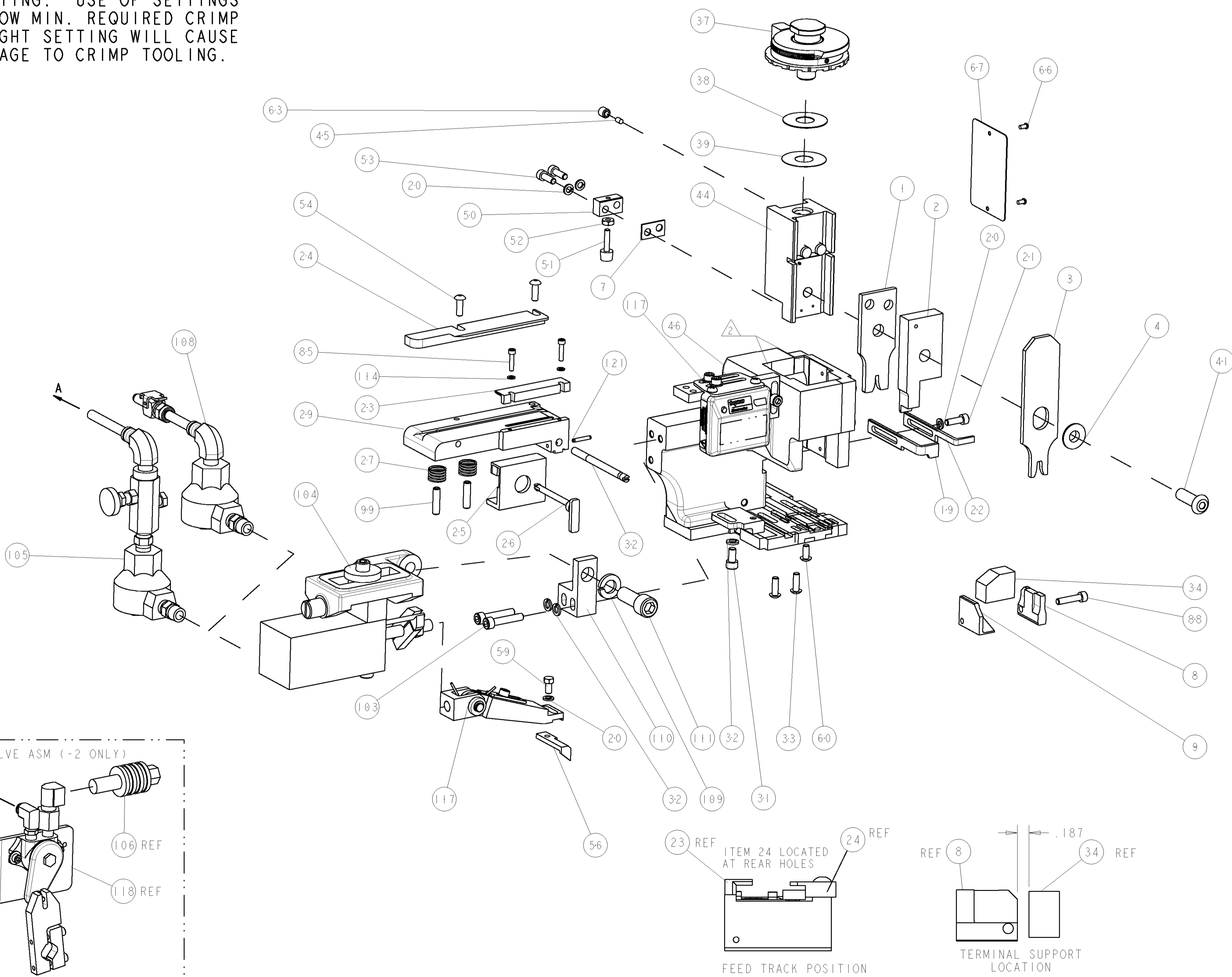


AMP		PACKARD	PACKARD TERMINAL - AMP CRIMP SPECS		REF SETTING
1949274-1	-	12110645			
			CRIMP HEIGHT	WIRE SIZE	
-	-	-	.062±.002 [1.57±0.05mm]	16AWG	B7
-	-	-	.059±.002 [1.50±0.05mm]	1mm2	CO
-	-	-	.056±.002 [1.42±0.05mm]	18AWG or 0.8mm2	C8
			CRIMP	SIZE	TYPE
-	-	-	WIRE	.100 [2.54mm]	F
-	-	-	INSUL	.155 [3.94mm]	F
WIRE STRIP LENGTH		TERM APPL SPEC	FEED	APPLICATOR INSTRUCTIONS	SET UP GAGE
.219 -.250		NONE	.640	408-8040	458637-1

LOC	DIST	REVISIONS					
A	66	P	LTR	DESCRIPTION	DATE	DWN	APVD
		A		RELEASED	09APR2007	BH	BH
		B		ECR-08-017575	14JUL2008	MY	TE
		C		ECR-08-028831	13NOV2008	DM	DM

- △ RECOMMENDED SPARE PARTS
- △ GREASE LIGHTLY
- △ GUARD MUST BE IN PLACE WHEN OPERATING APPLICATOR IN A BENCH MACHINE
- △ 16 AWG NOT RECOMMENDED BY PACKARD FOR THIS TERMINAL.

*** WARNING**
ON INSTALLATION, SET WIRE DISC TO LARGEST WIRE SIZE SETTING. USE OF SETTINGS BELOW MIN. REQUIRED CRIMP HEIGHT SETTING WILL CAUSE DAMAGE TO CRIMP TOOLING.



QTY	REV	DESCRIPTION	ITEM NO
-	1	PIN, SLOTTED SPRING .094 X .562	121
-	-	REF -	118
-	1	AIR FEED VALVE ASSEMBLY	117
-	-	REF -	116
-	-	REF -	115
-	2	WASHER, SPRG LOCK, REG NO 4	114
-	1	SCR, SKT HD CAP 3/8-16 X 1.000	111
-	1	MOUNT, FEED BRACKET	110
-	1	WASHER, SPRG LOCK, REG 3/8	109
-	1	AIR FEED VALVE ASSEMBLY	108
-	-	REF -	106
-	-	REF -	105
-	1	ASSEMBLY, AIR FEED	104
-	2	SCR, SKT HD CAP 10-32 X 1.000	103
-	2	SCR, SET, CUP POINT 10-32 X .750	99
-	1	SCR, SKT HD CAP 8-32 X .750	88
-	2	SCR, SKT HD CAP 4-40 X .500	85
-	1	SF APPL INST 408-8040	72
-	1	GENERAL INSTRUCTION PKG	71
-	1	PLATE, IDENTIFICATION	67
-	2	SCREW, DRIVE	66
-	1	SCR, SET, SELF LOCKING 1/4-20 X .250	63
-	1	SCR, BHSC, SELF-LOCKING, 8-32 X .375	60
-	1	SCR, HEX HD CAP 8-32 X .312	59
-	1	FEED PAWL	56
-	2	SCR, BTN SKT HD CAP 8-32 X .500	54
-	2	SCR, SKT HD CAP 8-32 X .500	53
-	1	NUT, HEX, REG 6-32	52
-	1	BUMPER, HOLD DOWN	51
-	1	SPACER, TONKER	50
-	1	APPL., BASIC AIR FEED SUB ASSY	46
-	1	PLUG, NYLON	45
-	1	RAM, SIDE FEED	44
-	1	CRIMPER, BOLT SPECIAL	41
-	1	SHIM SUB-ASSY	39
-	1	SHIM	38
-	1	FINE ADJUST HEAD ASSEMBLY	37
-	1	TERMINAL SUPPORT	34
-	2	SCR, BTN SKT HD CAP 8-32 X .500	33
-	1	ADJUSTMENT SCREW	32
-	3	WASHER, SPRG LOCK, REG NO 10	32
-	1	SCR, SKT HD CAP 10-32 X .375	31
-	1	PLATE, STRIP GUIDE	29
-	2	SPRING, COMPRESSION	27
-	1	LEVER, DRAG RELEASE	26
-	1	DRAG, SPECIAL	25
-	1	GUIDE, REAR STRIP	24
-	1	FRONT STRIP GUIDE	23
-	1	STRIPPER	22
-	1	SCR, SKT HD CAP 8-32 X .500	21
-	4	WASHER, SPRG LOCK, REG NO 8	20
-	-	REF -	19
-	1	PLATE, REAR SHEAR	9
-	1	ANVIL, SPECIAL COMBINATION	8
-	1	SPACER	7
-	1	BLOCK, FL CRIMPER SPACER	4
-	1	CRIMPER, INSULATION F PREMIUM	3
-	1	BLADE, SLUG	2
-	1	CRIMPER, WIRE PREMIUM	1

DIMENSIONS: INCHES 0 PLC ±.01 1 PLC ±.01 2 PLC ±.01 3 PLC ±.01 4 PLC ±.01 ANGLES ±.0001		TOLERANCES UNLESS OTHERWISE SPECIFIED: 0 PLC ±.01 1 PLC ±.01 2 PLC ±.01 3 PLC ±.01 4 PLC ±.01 ANGLES ±.0001		DWN B. HIGMAN 06MAR2007 CHK B. HIGMAN 06MAR2007 APVD T. BENCHOFF 06MAR2007 PRODUCT SPEC APPLICATION SPEC WEIGHT CUSTOMER DRAWING		Tyco Electronics Harrisburg, PA 17105-3608 NAME FINE ADJUST SIDE FEED HDM APPLICATOR SIZE CASE CODE DRAWING NO A1 00779 C-1855204 SCALE 3:5 SHEET 1 OF 1 REV C	
---	--	---	--	--	--	--	--

CUSTOMER VIEWABLE ASSEMBLY