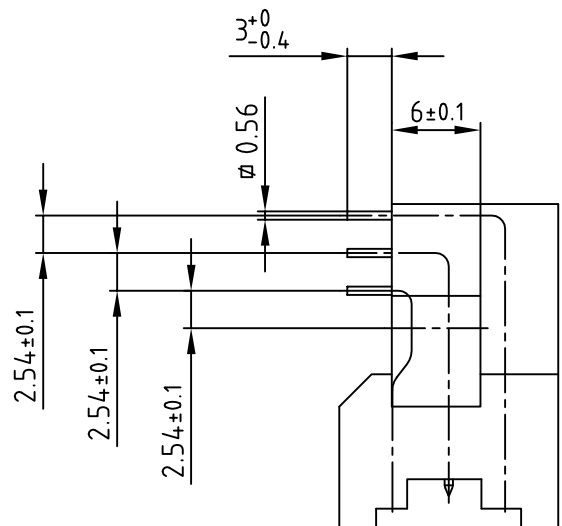
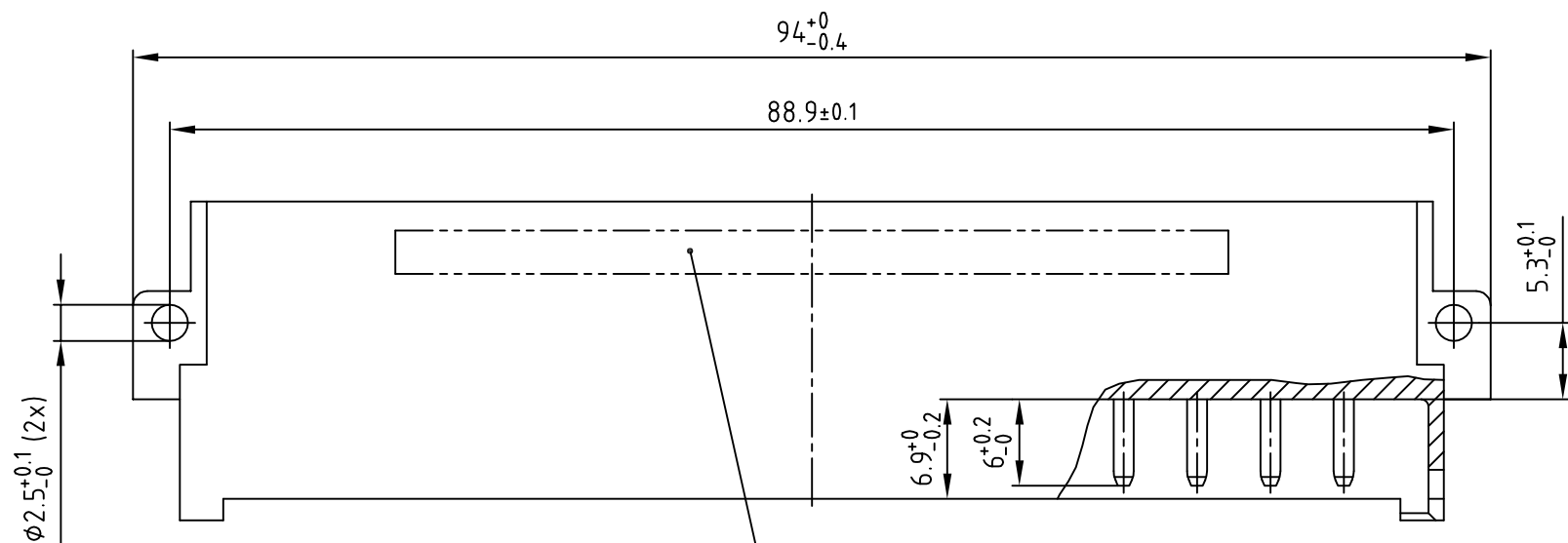
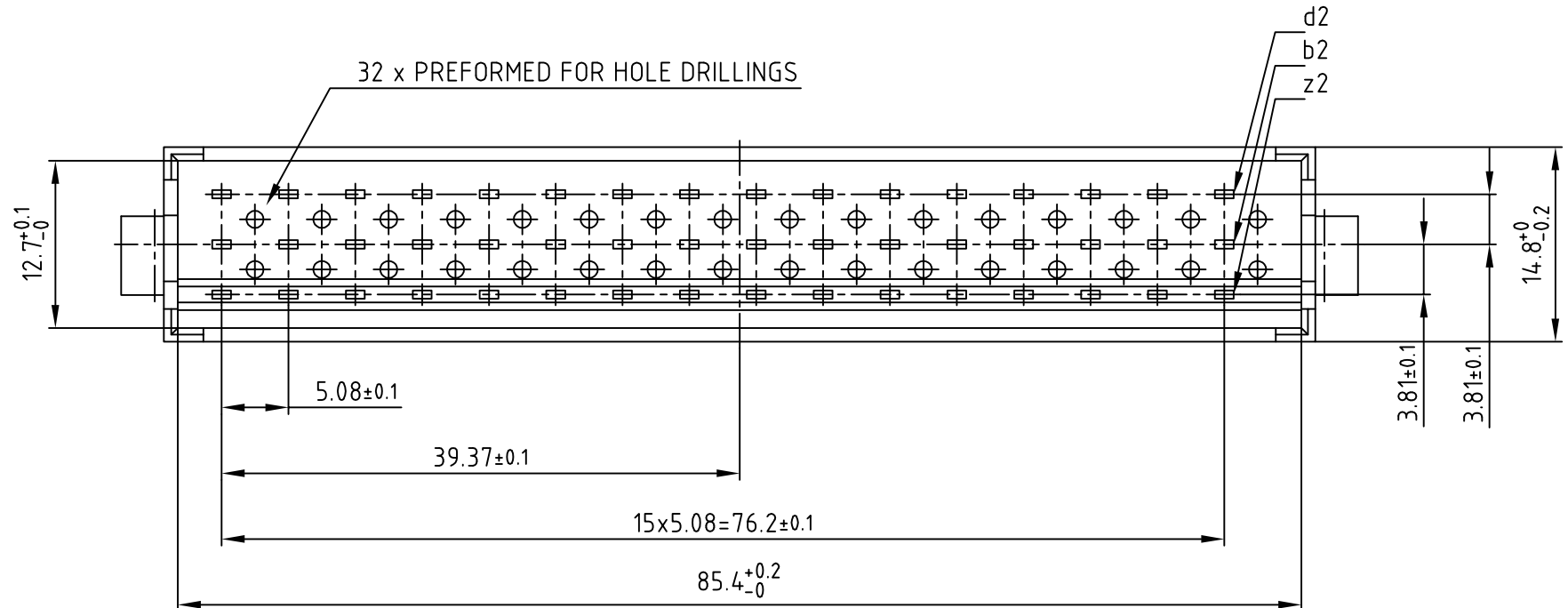


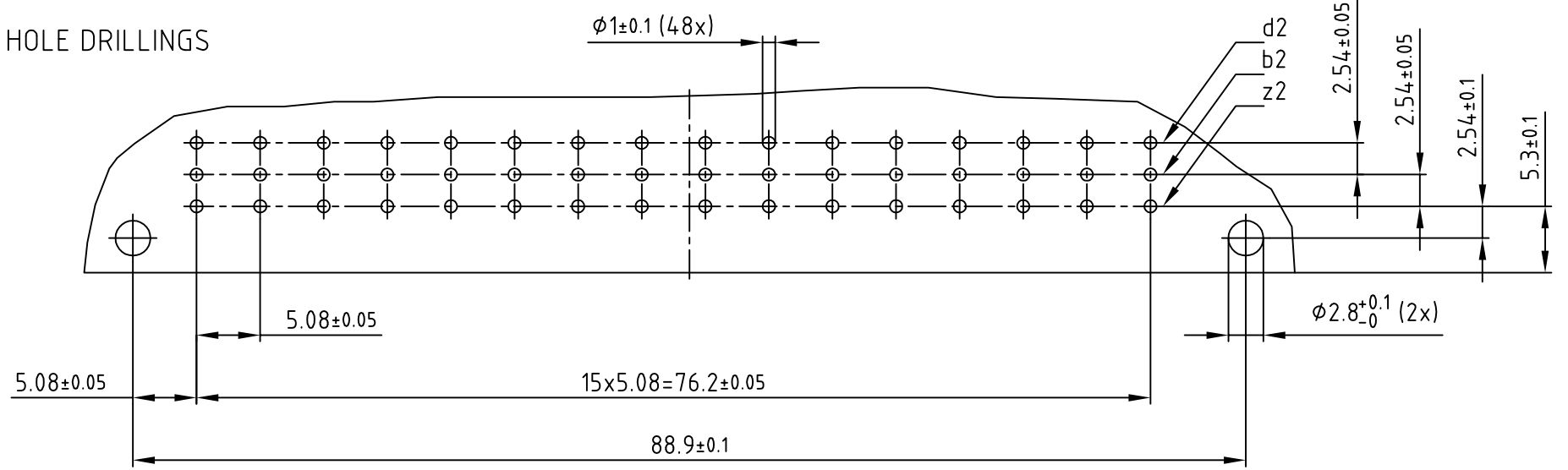
used for: DIN EN 60603-2 TYPE "F"



Directive 2002/95/EC RoHS compliant

- NOTES:
- INSULATOR: PBT GF UL 94 V-0, GREY
 - CONTACTS: COPPER ALLOY
PLATING: GOLD OVER NICKEL
50 MATING CYCLES
 - CONNECTOR IS PART MARKED: 121A10719X CONEC ABC

P.C.B. HOLE DRILLINGS



APPROVAL # FREIGABE # DEBLOCAGE # AUTOR/ZACION # APPROVAL

CUSTOMER APPROVAL DATE:

NAME: TITLE:

COMPANY NAME:

APPROVAL # FREIGABE # DEBLOCAGE # AUTOR/ZACION # APPROVAL

THIS DRAWING MAY NOT BE COPIED OR REPRODUCED IN ANY WAY, AND MAY NOT BE PASSED ON TO A THIRD PARTY WITHOUT WRITTEN PERMISSION. OWNERSHIP AND COPYRIGHT OF CONEC GmbH DO NOT ALTER CAD DRAWING BY HAND

rev.	description	date	name
a	Origin		

tolerance		dim. in mm	
2008	date	name	
drawn	19.08.	Sonnenberg	
appd.	19.08.	Mickenbecker	
norm	DIN EN 60603-2		
d-old			

scale: 2:1

material: SEE NOTES

title: MALE CONNECTOR TYPE "F"
48pos. ANGLED

dwg no: AutoCAD 2006
12K3A174 A

part no: 121A10719X

DIN-A
3
sh:1/1

