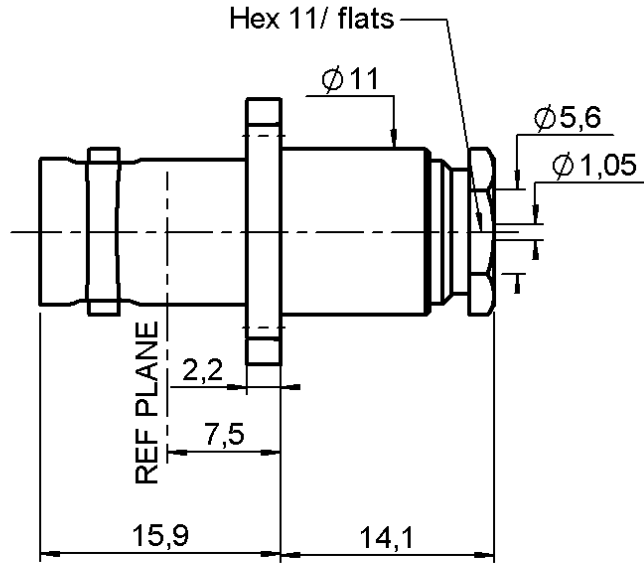
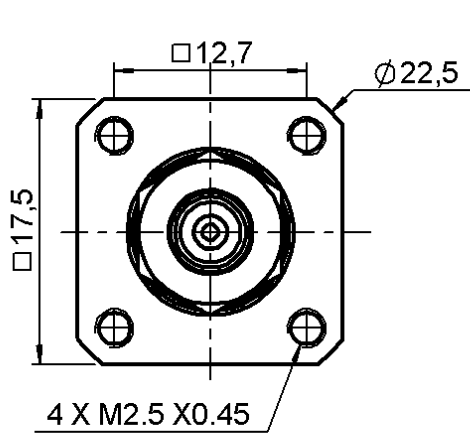


**STRAIGHT SQUARE FLANGE JACK**

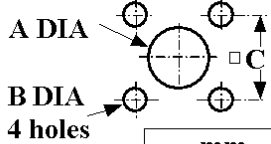
**R141.257.000**

**CLAMP TYPE - CABLE 5/50 S**

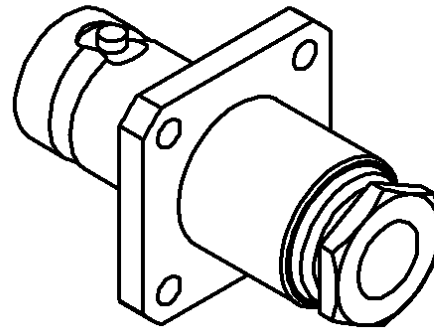
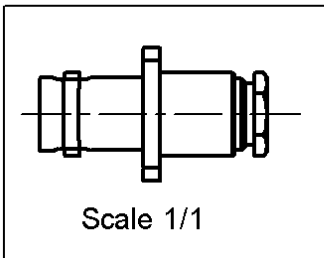
Series : BNC



**PANEL CUT OUT**



|              | mm    |       |
|--------------|-------|-------|
|              | Maxi  | mini  |
| A (R. Mount) | 13    | 12.9  |
| A (F. Mount) | 11.3  | 11.2  |
| B            | 2.7   | 2.6   |
| C            | 12.75 | 12.65 |



All dimensions are in mm.



| COMPONENTS     | MATERIALS        | PLATINGS (µm)          |
|----------------|------------------|------------------------|
| BODY           | BRASS            | NICKEL 2               |
| CENTER CONTACT | BERYLLIUM COPPER | GOLD 0.5 OVER NICKEL 2 |
| OUTER CONTACT  | -                | -                      |
| INSULATOR      | PTFE             | -                      |
| GASKET         | SILICONE RUBBER  | -                      |
| OTHERS PARTS   | BRASS            | NICKEL 2               |
| -              | -                | -                      |
| -              | -                | -                      |

Issue : 9916 G

In the effort to improve our products, we reserve the right to make changes judged to be necessary.



**STRAIGHT SQUARE FLANGE JACK**

**R141.257.000**

**CLAMP TYPE - CABLE 5/50 S**

Series : **BNC**

**PACKAGING**

| Standard   | Unit              | Other             |
|------------|-------------------|-------------------|
| <b>100</b> | <b>'W' option</b> | <b>Contact us</b> |

**SPECIFICATION**

**ELECTRICAL CHARACTERISTICS**

|                                 |              |              |                          |
|---------------------------------|--------------|--------------|--------------------------|
| Impedance                       |              | <b>50</b>    | $\Omega$                 |
| Frequency                       |              | <b>0-4</b>   | GHz                      |
| VSWR                            | <b>1.2</b> + | <b>0.000</b> | x F(GHz) Maxi            |
| Insertion loss                  |              | <b>0.115</b> | $\sqrt{F}$ (GHz) dB Maxi |
| RF leakage                      | - (          | <b>57</b>    | - F(GHz)) dB Maxi        |
| Voltage rating                  |              | <b>500</b>   | Veff Maxi                |
| Dielectric withstanding voltage |              | <b>1500</b>  | Veff mini                |
| Insulation resistance           |              | <b>5000</b>  | M $\Omega$ mini          |

**CABLE ASSEMBLY**

| Stripping | a    | b    | c    | d    | e    | f    |
|-----------|------|------|------|------|------|------|
| mm        | 2.50 | 7.00 | 0.00 | 0.00 | 3.00 | 0.00 |

Assembly instruction : **Clamp 03**

Recommended cable(s)  
 RG 141  
 RG 58  
 KX 15

Cable retention  
 - pull off **180** N mini  
 - torque **NA** N.cm

**MECHANICAL CHARACTERISTICS**

|                            |  |           |           |
|----------------------------|--|-----------|-----------|
| Center contact retention   |  |           |           |
| Axial force – Mating end   |  | <b>NA</b> | N mini    |
| Axial force – Opposite end |  | <b>NA</b> | N mini    |
| Torque                     |  | <b>NA</b> | N.cm mini |

**TOOLING**

| Part Number | Description | Hexagon |
|-------------|-------------|---------|
| .           | .           | .       |

|                    |  |              |      |
|--------------------|--|--------------|------|
| Recommended torque |  |              |      |
| Mating             |  | <b>NA</b>    | N.cm |
| Panel nut          |  | <b>NA</b>    | N.cm |
| Clamp nut          |  | <b>150</b>   | N.cm |
| A/F clamp nut      |  | <b>9.500</b> | mm   |

|             |  |               |             |
|-------------|--|---------------|-------------|
| Mating life |  | <b>500</b>    | Cycles mini |
| Weight      |  | <b>17.000</b> | g           |

**OTHERS CHARACTERISTICS**

-

**ENVIRONMENTAL**

|                       |  |                 |              |
|-----------------------|--|-----------------|--------------|
| Operating temperature |  | <b>-65/+165</b> | $^{\circ}$ C |
| Hermetic seal         |  | <b>NA</b>       | Atm.cm3/s    |
| Panel leakage         |  | <b>NA</b>       |              |

Issue : **9916 G**

In the effort to improve our products, we reserve the right to make changes judged to be necessary.

