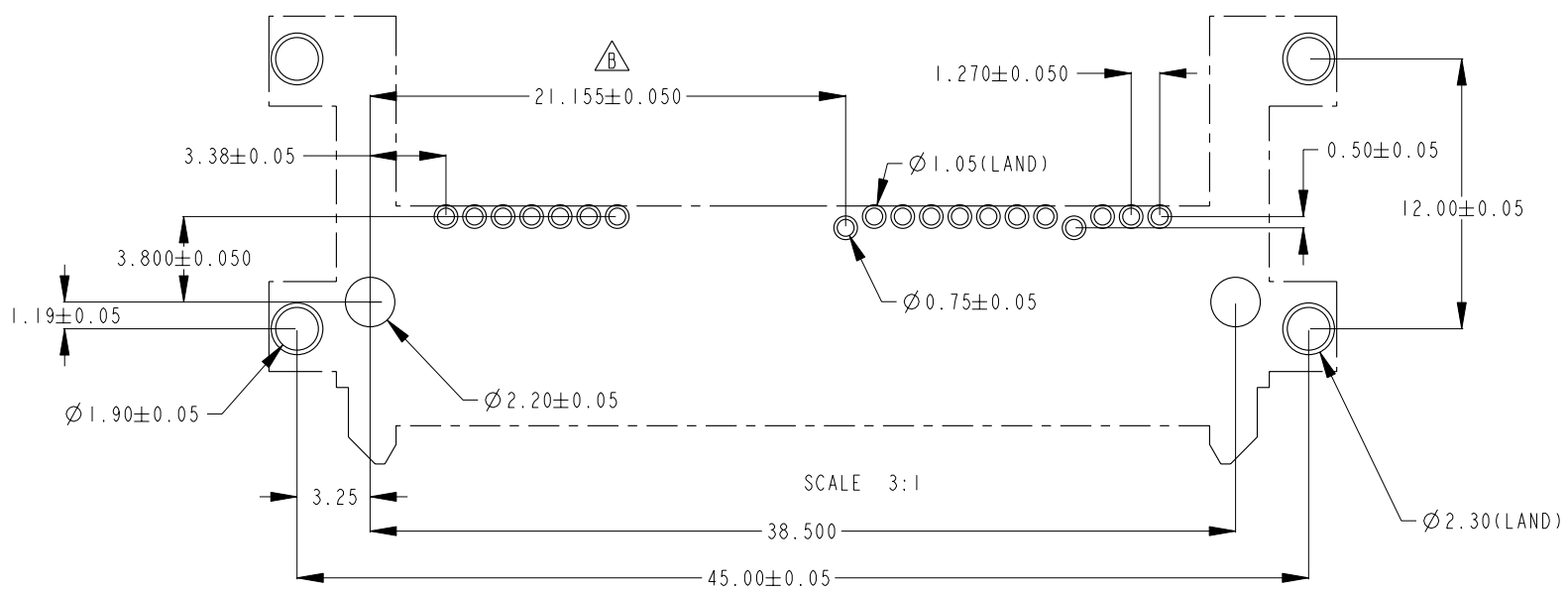


PRODUCT No.
10085945-001LF



- NOTES:
- MATERIAL:
 - HOUSING: HIGH TEMP THERMAPLASTIC, UL 94V-0
COLOUR: BLACK
 - TERMINAL: COPPER ALLOY
 - HOLD DOWN: COPPER ALLOY
 - FINISH:
 - TERMINAL: 30u" Au MIN AT CONTACT AREA OVER 50u" NICKEL,
50u" TIN MIN AT SOLDER TAIL OVER 50u" NICKEL.
 - HOLD DOWN: 50u" TIN MIN OVERALL OVER 50u" NICKEL.
 - THE HOUSING WILL WITHSTAND EXPOSURE TO 260°C PEAK TEMPERATURE FOR 10 SECONDS IN A CONVECTION, INFRA-RED OR VAPOR PHASE REFLOW OVEN.
 - THIS PRODUCT MEETS EUROPEAN UNION DIRECTIVES AND OTHER COUNTRY REGULATIONS AS DESCRIBED IN GS-22-008.
 - THE STANDARD PACKAGING IS IN TRAY.
 - APPROXIMATION LOCATION FOR FCI ID, CAVITY NUMBER & DATE CODE.
 - A \triangle BE NEXT TO ANY DIMENSION, VIEW, OR NOTE WHICH HAS BEEN MODIFIED TO THE CURRENT DRAWING REVISION.

RECOMMENDED PCB LAYOUT

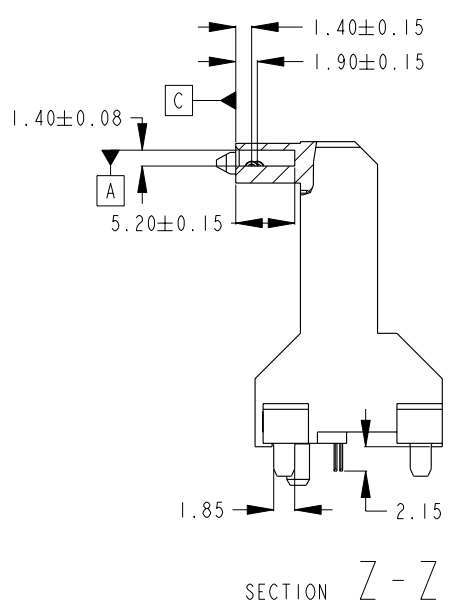
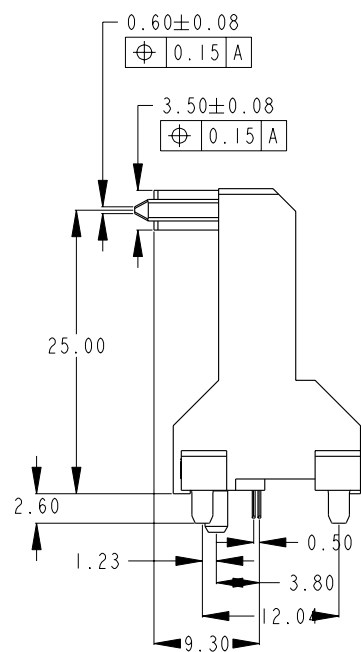
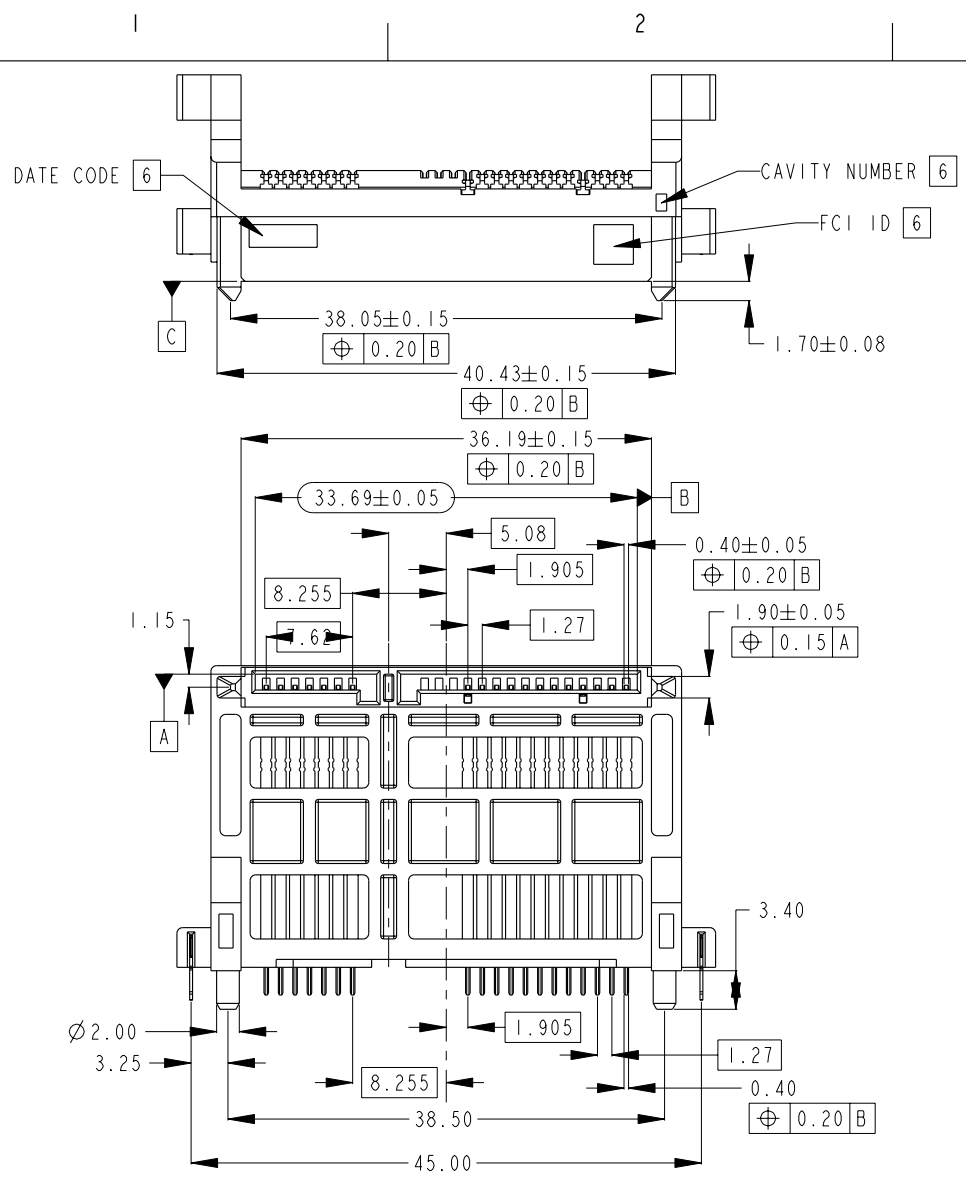


Copyright FCI.

spec ref	-	dr	KP TAY	2007-11-01	projection 	MM 	size	A4	scale	2:1
tolerance std	TOLERANCES UNLESS OTHERWISE SPECIFIED	eng	KP TAY	2010-10-27			ecn no	ELX-S-001867-1		
-	-	chr	KP TAY	2010-10-27			rel level	RELEASED		
surface	✓	appr	JOEY NG	2010-10-27	product family	SATA				
-	linear	0.X	±0.30		title	SATA RECEPTACLE	dwg no	10085945	rev	B
-	0.XX	±0.20								
-	0.XXX	±0.10								
-	angular	0°	±2°	www.fci.com	cat. no.	-	CUSTOMER	sheet 1 of 2		



Copyright FCI.



spec ref	-	dr	KP TAY	2007-11-01	projection 	MM ←→	size	A4	scale	2:1
tolerance std	TOLERANCES UNLESS OTHERWISE SPECIFIED	eng	KP TAY	2010-10-27			ecn no	ELX-S-001867-1		
-	-	chr	KP TAY	2010-10-27			rel level	RELEASED		
surface	✓	appr	JOEY NG	2010-10-27	product family	SATA		rev	B	
	linear				title	SATA RECEPTACLE		dwg no	10085945	
						HIGH RISE R/A TH				
	angular				cat. no.	CUSTOMER		sheet	2 of 2	

ProjE File - REV C - 2009-06-09