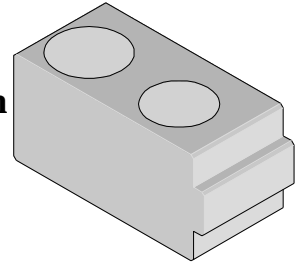




**5, 6 and 8 Row Universal Alignment Block
For HSD or VHDM® Backplane Connector System
Instruction Sheet
Order No. 62202-0212**



FEATURES

- Designed to provide proper spacer and clearance on Backplane Connectors with guide pins and polarizing pins.
- This tool module may be used with an Insertion Tool to press in (1) one connector or is stackable in a Molex tool holder system to press in multiple connectors at one time
- See 62201-0999 VHDM-HSD® Backplane And Daughtercard Installation Tooling Operation Manual for more information on tooling, presses and repair

SCOPE:

Products: VHDM®* 5, 6 and 8-Row use on all connectors with guide pins.

*VHDM® is a registered trademark of Amphenol Corporation

DESCRIPTION:

This tool is used with an Insertion Tool for pressing in an HSD or VHDM®* 5, 6 and 8-Row connector with locating pins. This block allows insertion tools for connectors with locating pins to be stacked in mounting rails with other VHDM or HSD insertion tools. They are mounted in one of several different length-mounting rails. See Sections 2.3 and 4.2 in 62201-0999 VHDM-HSD® Installation Tooling Manual for detailed information on selecting the rails and mounting these special combinations

This tool is intended for use with a customer supplied back up and in a press of sufficient tonnage to allow full seating of the connector. There are no replacement parts available for this tool. Should any part of the tool be damaged the whole tool must be replaced.

OPERATION:

Refer to 62201-0999 VHDM-HSD Manual for proper operation, maintenance, and options of this tool for proper operation, maintenance, and options of this tool.

Americas Headquarters Lisle, Illinois 60532 U.S.A. 1-800-78MOLEX amerinfo@molex.com	Far East North Headquarters Yamato, Kanagawa, Japan 81-462-65-2324 feninfo@molex.com	Far East South Headquarters Jurong, Singapore 65-6-268-6868 fesinfo@molex.com	European Headquarters Munich, Germany 49-89-413092-0 eurinfo@molex.com	Corporate Headquarters 2222 Wellington Ct. Lisle, IL 60532 U.S.A. 630-969-4550 Fax: 630-969-1352
---	--	---	--	---

Visit our Web site at <http://www.molex.com>