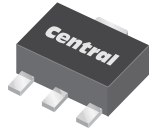


CBCX68 SERIES NPN
CBCX69 SERIES PNP

SURFACE MOUNT
COMPLEMENTARY SILICON
SMALL SIGNAL TRANSISTORS



SOT-89 CASE



www.centrasemi.com

DESCRIPTION:

The CENTRAL SEMICONDUCTOR CBCX68 and CBCX69 series types are complementary silicon transistors manufactured by the epitaxial planar process, epoxy molded in a surface mount package, designed for applications requiring high current capability.

MARKING: FULL PART NUMBER

MAXIMUM RATINGS: ($T_A=25^\circ\text{C}$)

Collector-Emitter Voltage
Collector-Emitter Voltage
Emitter-Base Voltage
Continuous Collector Current
Peak Collector Current
Continuous Base Current
Peak Base Current
Power Dissipation
Operating and Storage Junction Temperature
Thermal Resistance

SYMBOL

V_{CES}
 V_{CEO}
 V_{EBO}
 I_C
 I_{CM}
 I_B
 I_{BM}
 P_D
 T_J, T_{stg}
 θ_{JA}

25
20
5.0
1.0
2.0
100
200
1.2
-65 to +150
104

UNITS

V
V
V
A
A
mA
mA
W
 $^\circ\text{C}$
 $^\circ\text{C/W}$

ELECTRICAL CHARACTERISTICS: ($T_A=25^\circ\text{C}$ unless otherwise noted)

SYMBOL	TEST CONDITIONS	MIN	TYP	MAX	UNITS
I_{CBO}	$V_{CB}=25\text{V}$			100	nA
I_{CBO}	$V_{CB}=25\text{V}, T_A=150^\circ\text{C}$			10	μA
I_{EBO}	$V_{EB}=5.0\text{V}$			10	μA
BV_{CBO}	$I_C=10\mu\text{A}$	25			V
BV_{CEO}	$I_C=10\text{mA}$	20			V
BV_{EBO}	$I_E=10\mu\text{A}$	5.0			V
$V_{CE(SAT)}$	$I_C=1.0\text{A}, I_B=100\text{mA}$			0.5	V
$V_{BE(ON)}$	$V_{CE}=10\text{V}, I_C=5.0\text{mA}$		0.6		V
$V_{BE(ON)}$	$V_{CE}=1.0\text{V}, I_C=1.0\text{A}$			1.0	V
h_{FE}	$V_{CE}=10\text{V}, I_C=5.0\text{mA}$	50			
h_{FE}	$V_{CE}=1.0\text{V}, I_C=500\text{mA}$ (CBCX68, CBCX69)	85		375	
h_{FE}	$V_{CE}=1.0\text{V}, I_C=500\text{mA}$ (CBCX68-16, CBCX69-16)	100		250	
h_{FE}	$V_{CE}=1.0\text{V}, I_C=500\text{mA}$ (CBCX68-25, CBCX69-25)	160		400	
h_{FE}	$V_{CE}=1.0\text{V}, I_C=1.0\text{A}$	60			
f_T	$V_{CE}=5.0\text{V}, I_C=10\text{mA}, f=20\text{MHz}$	65			MHz

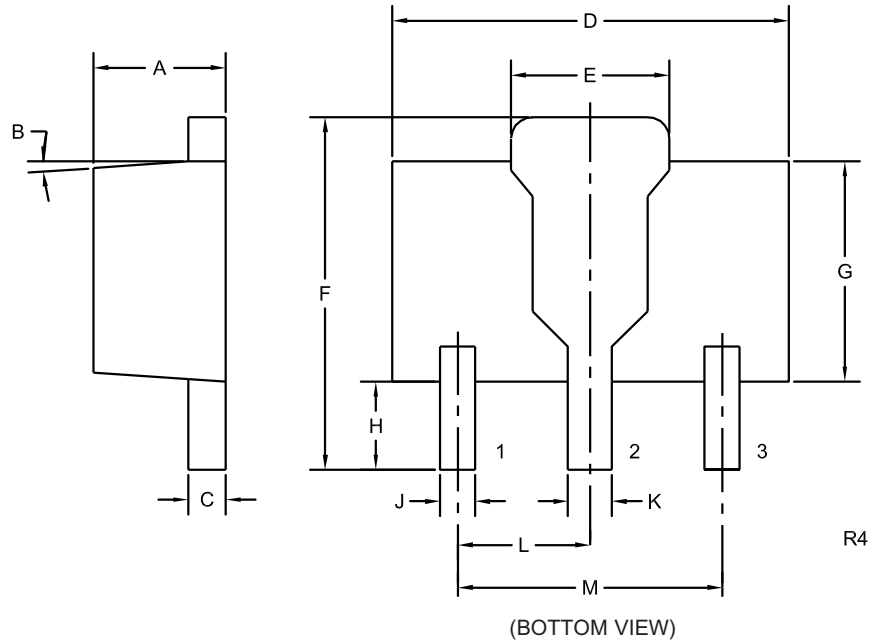
R11 (23-February 2012)

CBCX68 SERIES NPN
 CBCX69 SERIES PNP

SURFACE MOUNT
 COMPLEMENTARY SILICON
 SMALL SIGNAL TRANSISTORS



SOT-89 CASE - MECHANICAL OUTLINE



LEAD CODE:
 1) EMITTER
 2) COLLECTOR
 3) BASE

MARKING:
 FULL PART NUMBER

SYMBOL	DIMENSIONS			
	INCHES		MILLIMETERS	
	MIN	MAX	MIN	MAX
A	0.055	0.067	1.40	1.70
B	4°		4°	
C	0.014	0.018	0.35	0.46
D	0.173	0.185	4.40	4.70
E	0.064	0.074	1.62	1.87
F	0.146	0.177	3.70	4.50
G	0.090	0.106	2.29	2.70
H	0.028	0.051	0.70	1.30
J	0.014	0.019	0.36	0.48
K	0.017	0.023	0.44	0.58
L	0.059		1.50	
M	0.118		3.00	

SOT-89 (REV: R4)

R11 (23-February 2012)

OUTSTANDING SUPPORT AND SUPERIOR SERVICES



PRODUCT SUPPORT

Central's operations team provides the highest level of support to insure product is delivered on-time.

- Supply management (Customer portals)
- Inventory bonding
- Consolidated shipping options
- Custom bar coding for shipments
- Custom product packing

DESIGNER SUPPORT/SERVICES

Central's applications engineering team is ready to discuss your design challenges. Just ask.

- Free quick ship samples (2nd day air)
- Online technical data and parametric search
- SPICE models
- Custom electrical curves
- Environmental regulation compliance
- Customer specific screening
- Up-screening capabilities
- Special wafer diffusions
- PbSn plating options
- Package details
- Application notes
- Application and design sample kits
- Custom product and package development

REQUESTING PRODUCT PLATING

1. If requesting Tin/Lead plated devices, add the suffix "TIN/LEAD" to the part number when ordering (example: 2N2222A TIN/LEAD).
2. If requesting Lead (Pb) Free plated devices, add the suffix "PBFREE" to the part number when ordering (example: 2N2222A PBFREE).

CONTACT US

Corporate Headquarters & Customer Support Team

Central Semiconductor Corp.
145 Adams Avenue
Hauppauge, NY 11788 USA
Main Tel: (631) 435-1110
Main Fax: (631) 435-1824
Support Team Fax: (631) 435-3388
www.centrasemi.com

Worldwide Field Representatives:
www.centrasemi.com/wwreps

Worldwide Distributors:
www.centrasemi.com/wwdistributors

For the latest version of Central Semiconductor's **LIMITATIONS AND DAMAGES DISCLAIMER**, which is part of Central's Standard Terms and Conditions of sale, visit: www.centrasemi.com/terms