

REFERENCE SPECIFICATIONS

-NFC 93425 (in compliance with HE 507)

PHYSICAL CHARACTERISTICS

- INSULATOR MATERIAL: THERMOPLASTIC UL94V0
- CONTACT MATERIAL: PHOSPHOR BRONZE(SIGNAL CONTACT)
BRASS (POWERS CONTACT)
- ACCESSORIES: BRASS
- SHELLS: STEEL

ELECTRICAL CHARACTERISTICS

- NOMINAL CURRENT: 7.5A (SIGNAL CONTACT)
30A (POWER CONTACT)
- CONTACT RESISTANCE: <=7.3 m Ohms(SIGNAL and POWER)
- CONTACT/CONTACT : >=1000 V
- CONTACT/GROUND : >=1200 V
- INSULATION RESISTANCE: >=5000 MOhms
- CLIMATIC CATEGORY: 55/125/21
TEMPERATURE RANGE -55°C TO +125°C
DAMP HEAT STEADY STATE 21 DAYS
SALT SPRAY 24 HOURS
- RETENTION AGAINST TORQUE: - Threaded insert: 0.7 N.m Maximum
- Female screw : 0.5 N.m Maximum

NOTE RoHS INFORMATION

- The "LF" products meet european union Directives and other country regulations as described in GS-47-0004.
- The housing will withstand exposure to 260°C peak temperature for 3.5 seconds in a wave solder application with a 1.6mm minimum thick circuit board. See application notes/procedures if they are available.
- Termination plating spec:
 - Signal contacts: Ni + Gold/GxT
 - Power contacts: Ni 1.27µmi+Sn 2.5 to 7.5µ,pure bright
- Active area plating spec:
 - Signal and power contacts: Ni + Gold/GxT
- Shell plating :2 to 4µm Cu + Ni + 3 to 10µmm Sn,pure bright
- Accessories: Sn pure bright + Nickel
- Packaging spec: See GS-14-920

DBL13W3S700G30LF

Series

Shell size: **A B C**
see sheet 3

Front accessory definition
see sheet 2

- blank** :without accessory
- L** :threaded insert M3
- O** :threaded insert UNC 4-40
- V** :female screw UNC 4-40

Layout of contacts (see sheets)

Contacts

S :Socket

Termination type

7 Right angle/USA

Plating

- 00** 200 matings/unmatings
- 43** 500 matings/unmatings

PCB accessories definition
see sheet 2

- A** :without accessory
- H** :Metal brackets+harpoons for PCB 2.40mm
- G** :Metal brackets+harpoons for PCB 1.60mm
- M** :Metal brackets

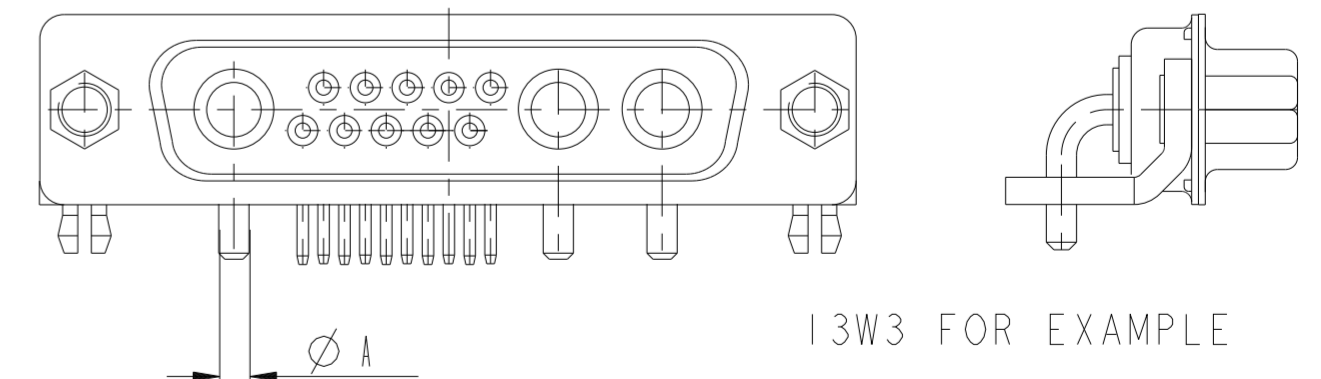
Power contacts

- 00** :Not fitted with power contact (signal contacts always fitted)
- 30** :Fitted with power contacts 30 Amp.

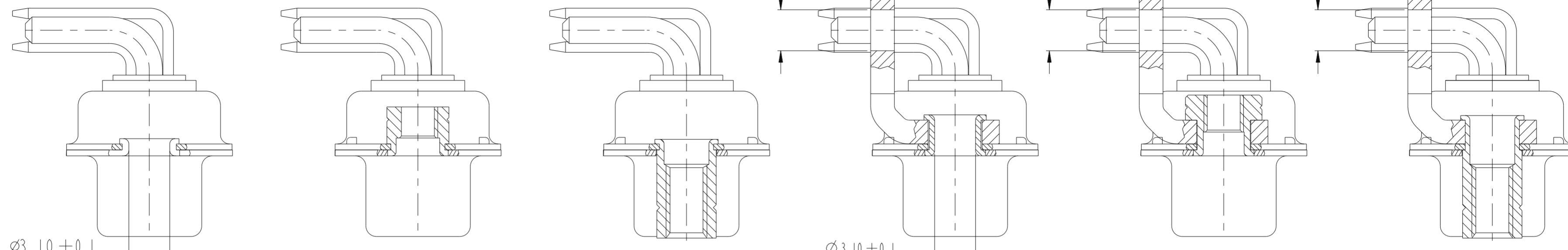
See note RoHS

TABLE 1:PCB HOLE DIAMETERS

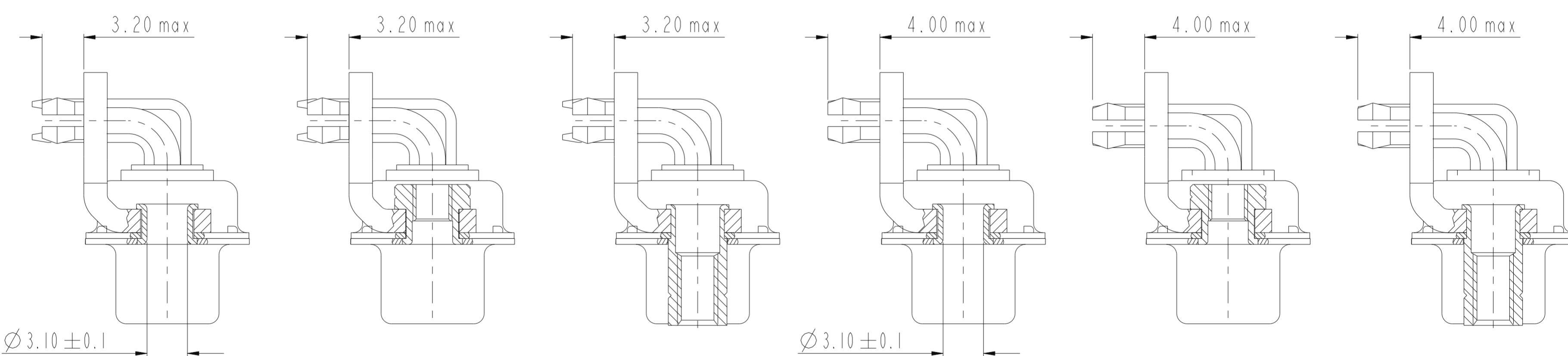
	POWER CONTACTS		ACCESSORIES	SIGNAL CONTACTS
30 A	2.00	∅2.40	∅3.10	∅1.00
Max current power	∅A±0.10	PCB HOLE +/-0.1	PCB HOLE +/-0.1	PCB HOLE +/-0.1



spec ref	dr	1, Product Eng	2015/06/12	projection	mm	size	A2	scale	1:1
tolerance std	eng	Paul Mithun	2019/02/20		mm	ecn no	ELX-432325-2	rel level	Released
ISO 406 ISO 1101	chr	-	appr						
surface	linear	0.X	±3	product family		cat. no.	-	Product - Customer Drw	sheet 1 of 6
ISO 1302	angular	0°	±2°	SUB FEMALE DW US foot print		diag no	C01-8639-2301C	rev	E
		0.XX	±0.10	mixed power right angled solder					
		0.XXX	±±0.05						



FRONT ACCESSORY	Blank Without	L insert M3 O insert UNC 4.40	V insert UNC 4.40	Blank Without	L insert M3 O insert UNC 4.40	V insert UNC 4.40
PCB ACCESSORIES	A Without	A Without	A Without	M Metal brackets	M Metal brackets	M Metal bracket



FRONT ACCESSORY	Blank Without	L insert M3 O insert UNC 4.40	V insert UNC 4.40	Blank Without	L insert M3 O insert UNC 4.40	V insert UNC 4.40
PCB ACCESSORIES	G Metal brackets + harpoons for PCB 1.60mm	G Metal brackets + harpoons for PCB 1.60mm	G Metal brackets + harpoons for PCB 1.60mm	H Metal brackets + harpoons for PCB 2.40mm	H Metal brackets + harpoons for PCB 2.40mm	H Metal brackets + harpoons for PCB 2.40mm

spec ref	dr	1, Product Eng	2015/06/12	projection	mm	size	A2	scale	1:1
tolerance std	eng	Paul Mithun	2019/02/20			ecn no	ELX-32325-2	rel level	Released
ISO 406 ISO 1101	chr	-	product family			-			
surface	linear	0.X	±3	Amphenol FCI	title SUB FEMALE DW US foot print mixed power right angled solder	cat. no. -	Product - Customer Drw	sheet 2 of 6	
		0.XX	±0.10						
		0.XXX	±±0.05						
ISO 1302	angular	0°	±2°	rev E					

A

B

C

D

E

F

PART NUMBER	AMPS	MATINGS/ UNMATINGS	FRONT ACCESSORY	PCB ACCESSORIES
D*xWxS700A30LF	30	200	without	without
D*LxWxS700A30LF	30	200	insert M3	without
D*OxWxS700A30LF	30	200	insert UNC 4.40	without
D*VxWxS700A30LF	30	200	female screw UNC 4.40	without
D*xWxS700H30LF	30	200	without	metal bracket+harpoon PCB 2.40mm
D*LxWxS700H30LF	30	200	insert M3	metal bracket+harpoon PCB 2.40mm
D*OxWxS700H30LF	30	200	insert UNC 4.40	metal bracket+harpoon PCB 2.40mm
D*VxWxS700H30LF	30	200	female screw UNC 4.40	metal bracket+harpoon PCB 2.40mm
D*xWxS700G30LF	30	200	without	metal bracket+harpoon PCB 1.60mm
D*LxWxS700G30LF	30	200	insert M3	metal bracket+harpoon PCB 1.60mm
D*OxWxS700G30LF	30	200	insert UNC 4.40	metal bracket+harpoon PCB 1.60mm
D*VxWxS700G30LF	30	200	female screw UNC 4.40	metal bracket+harpoon PCB 1.60mm
D*xWxS700M30LF	30	200	without	metal bracket
D*LxWxS700M30LF	30	200	insert M3	metal bracket
D*OxWxS700M30LF	30	200	insert UNC 4.40	metal bracket
D*VxWxS700M30LF	30	200	female screw UNC 4.40	metal bracket

shell size *

A
A
B
B
B
C
C
C

LAYOUTS
xWx

11W1
7W2
21W1
17W2
13W3
25W3
21WA4
27W2

PART NUMBER	AMPS	MATINGS/ UNMATINGS	FRONT ACCESSORY	PCB ACCESSORIES
D*xWxS743A30LF	30	500	without	without
D*LxWxS743A30LF	30	500	insert M3	without
D*OxWxS743A30LF	30	500	insert UNC 4.40	without
D*VxWxS743A30LF	30	500	female screw UNC 4.40	without
D*xWxS743H30LF	30	500	without	metal bracket+harpoon PCB 2.40mm
D*LxWxS743H30LF	30	500	insert M3	metal bracket+harpoon PCB 2.40mm
D*OxWxS743H30LF	30	500	insert UNC 4.40	metal bracket+harpoon PCB 2.40mm
D*VxWxS743H30LF	30	500	female screw UNC 4.40	metal bracket+harpoon PCB 2.40mm
D*xWxS743G30LF	30	500	without	metal bracket+harpoon PCB 1.60mm
D*LxWxS743G30LF	30	500	insert M3	metal bracket+harpoon PCB 1.60mm
D*OxWxS743G30LF	30	500	insert UNC 4.40	metal bracket+harpoon PCB 1.60mm
D*VxWxS543G30LF	30	500	female screw UNC 4.40	metal bracket+harpoon PCB 1.60mm
D*xWxS743M30LF	30	500	without	metal bracket
D*LxWxS743M30LF	30	500	insert M3	metal bracket
D*OxWxS743M30LF	30	500	insert UNC 4.40	metal bracket
D*VxWxS743M30LF	30	500	female screw UNC 4.40	metal bracket

Amphenol
FCI

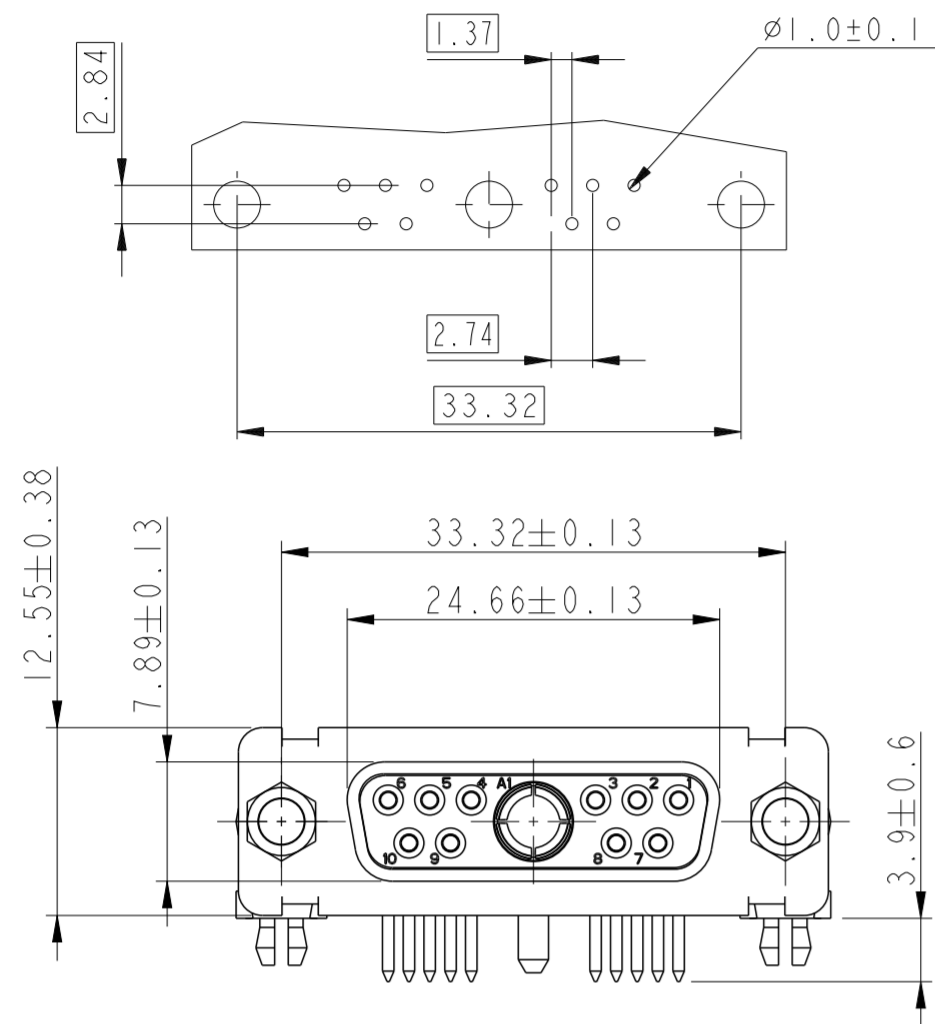
© 2016 APCI

spec ref	dr	1, Product Eng	2015/06/12	projection	mm	size	A2	scale	1:1
tolerance std	eng	Paul Mithun	2019/02/20		←→	ecn no	ELX-32325-2	rel level	Released
ISO 406	chr	-							
ISO 1101	appr	K-Paul Biju	2019/02/20						
surface	linear	0.X	±3	Amphenol FCI		SUB FEMALE DW US foot print		cat. no.	C01-8639-2301C
ISO 1302		0.XX	±0.10	mixed power right angled solder		rev	E	Product - Customer Drw	
	angular	0°	±2°			sheet 3 of 6			

11W1

LAYOUT AND CONNECTOR DIMENSIONS

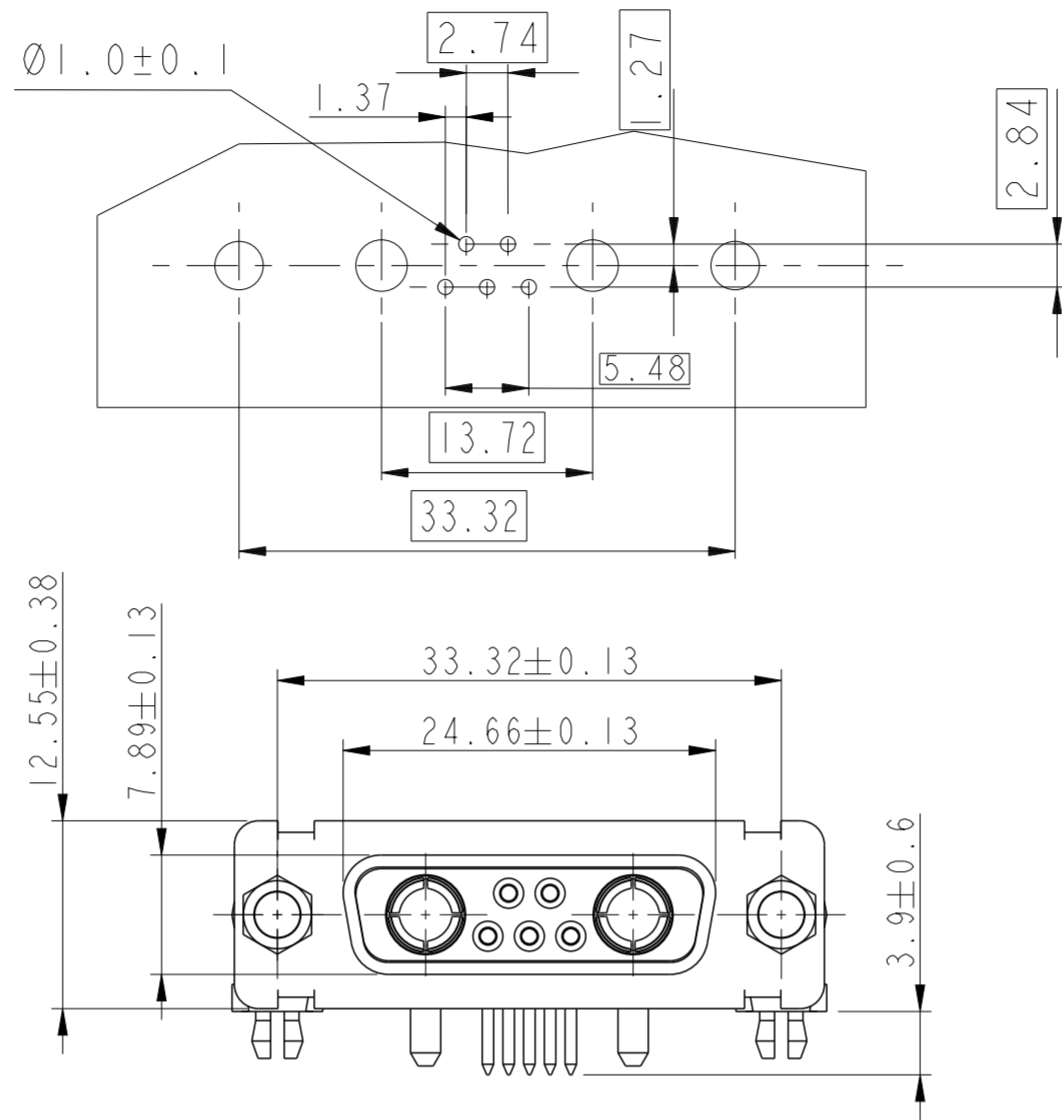
For PCB hole diameters see table I sheet I



7W2

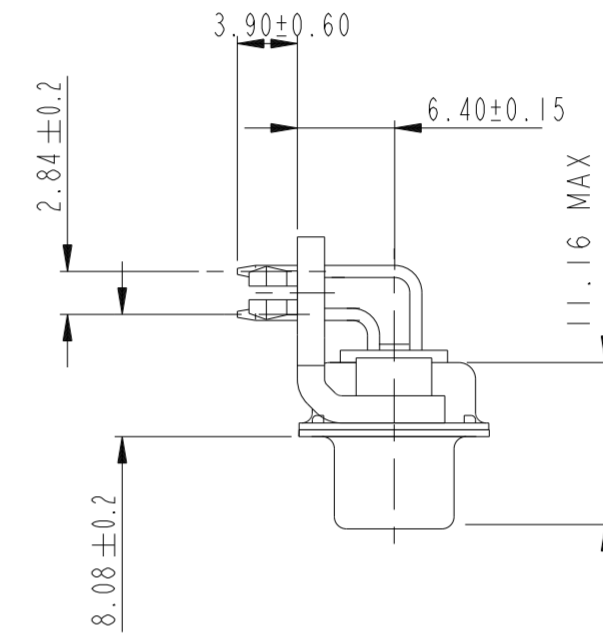
LAYOUT AND CONNECTOR DIMENSIONS

For PCB hole diameters see table I sheet I

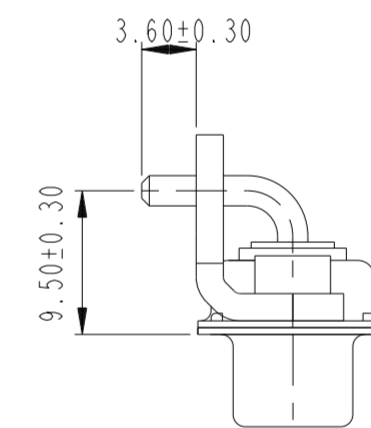


SIDE VIEW FOR ALL LAYOUTS

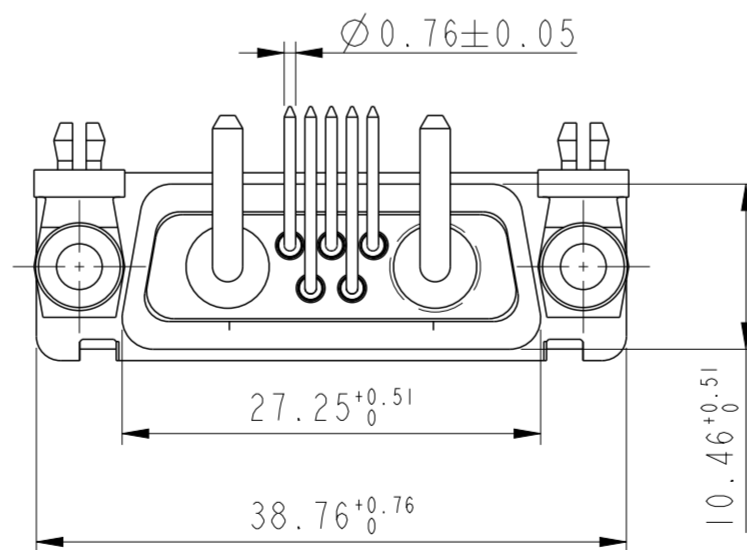
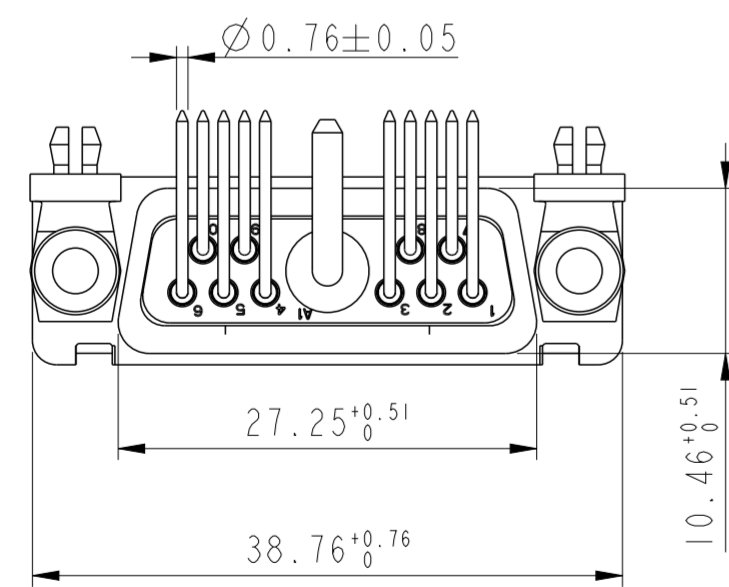
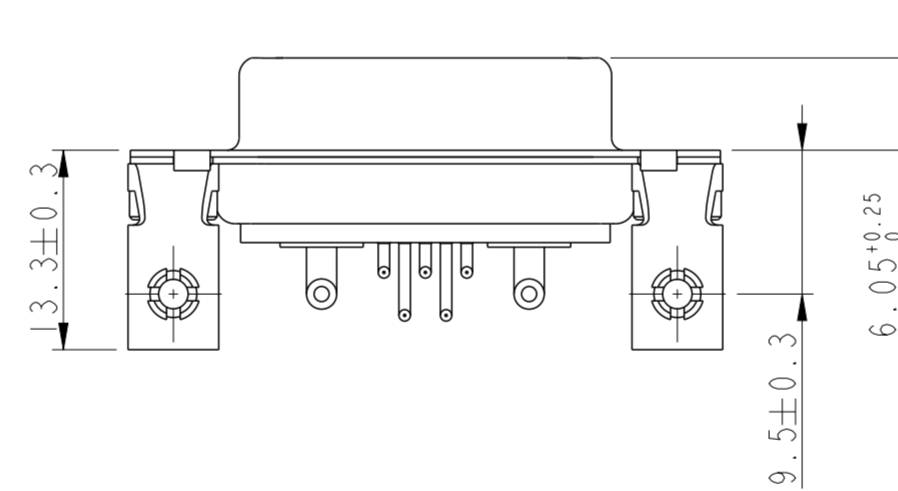
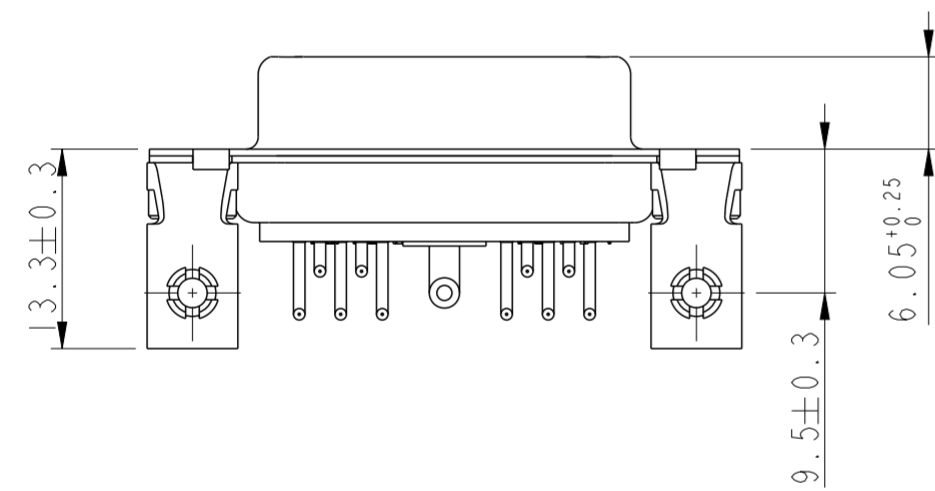
VIEW WITHOUT POWERS CONTACTS



VIEW WITH POWERS CONTACTS



Amphenol FCI

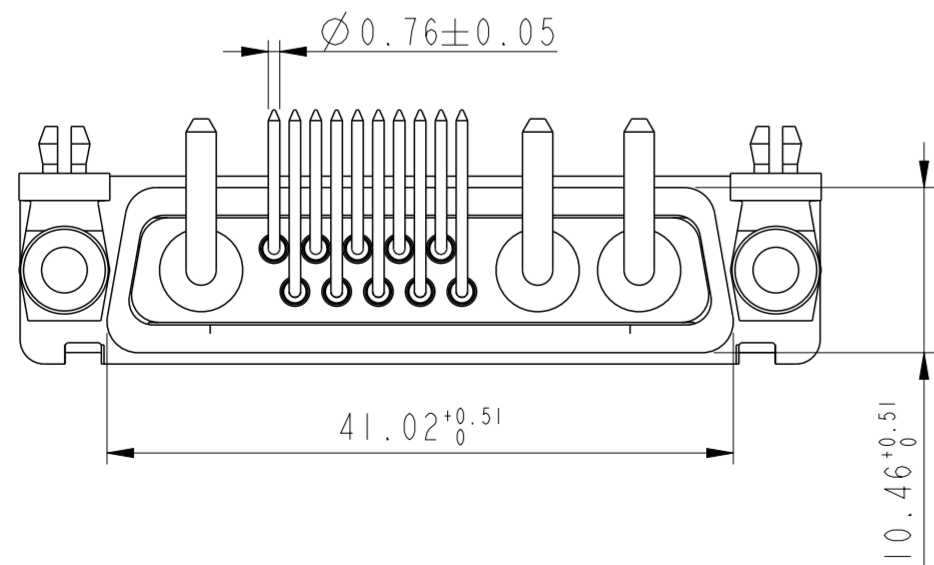
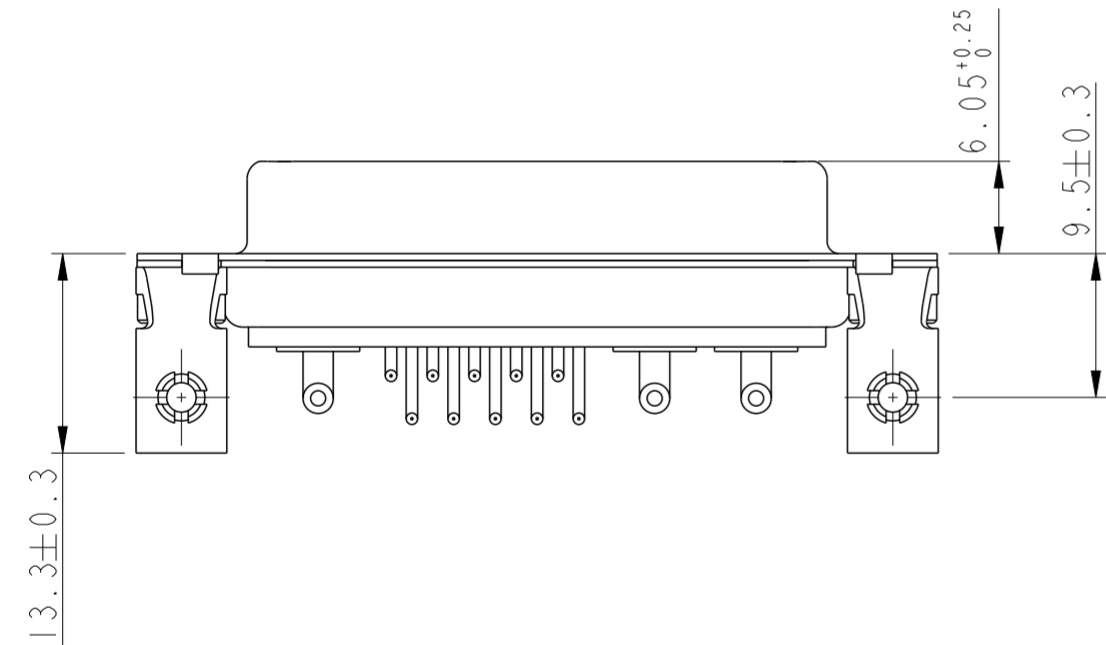
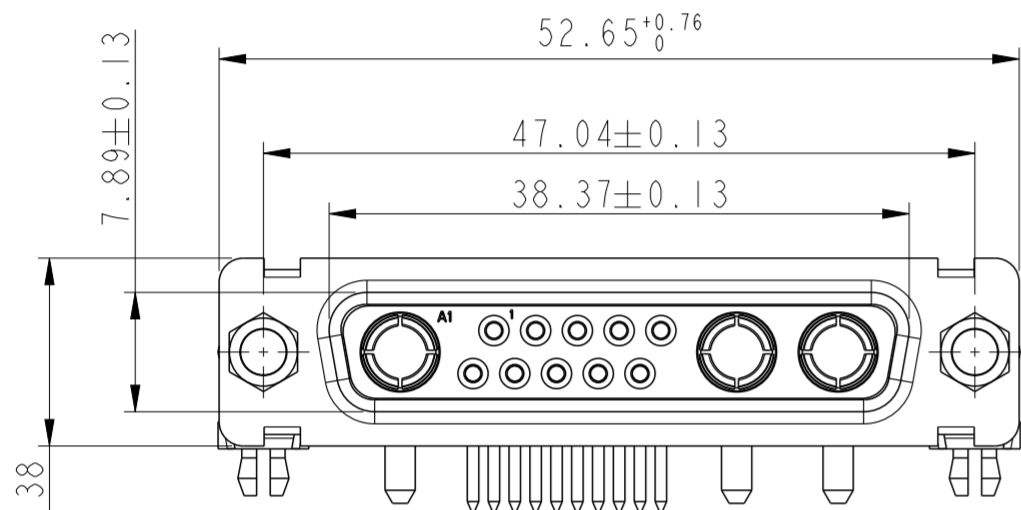
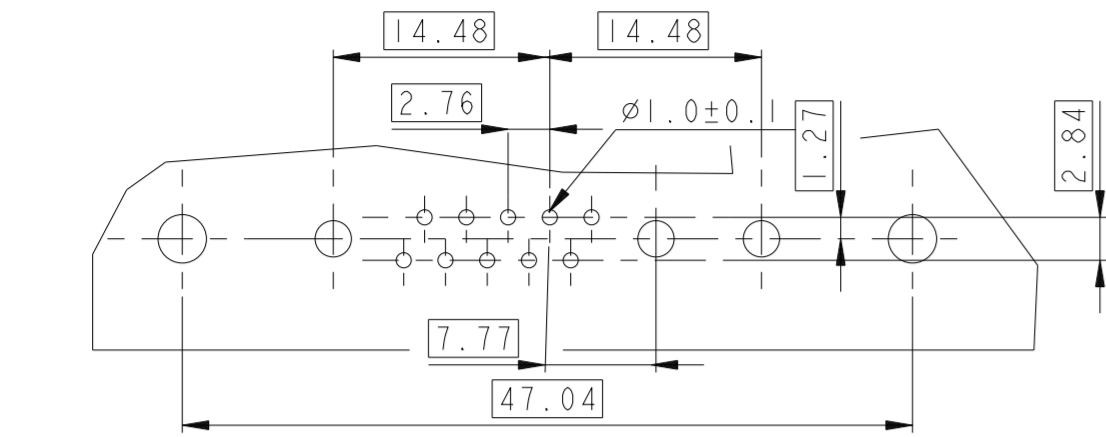


© 2016 AFCI

spec ref	dr	1, Product Eng	2015/06/12	projection	mm	size	A2	scale	2:1
tolerance std	eng	Paul Mithun	2019/02/20			ecn no	ELX-32325-2	rel level	Released
ISO 406	chr	-							
ISO 1101	appr	K-Paul Biju	2019/02/20						
surface	linear	0.X	± 3	product family	-	dwg no	C01-8639-2301C	rev	E
ISO 1302	angular	0.XX	± 0.10	Amphenol FCI	TITLE	SUB FEMALE DW US foot print	Product - Customer Drw	sheet 4 of 6	
		0.XXX	± 0.05			mixed power right angled solder			
		0°	$\pm 2^\circ$						

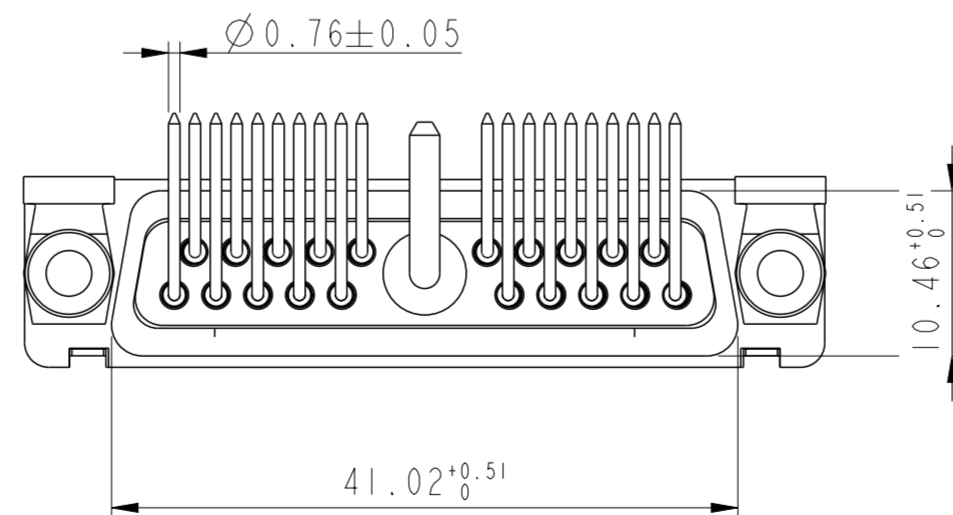
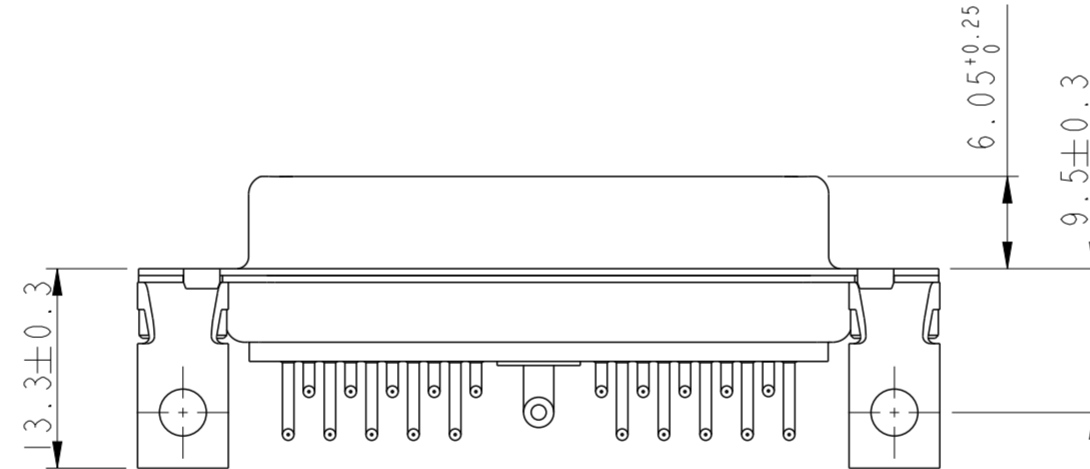
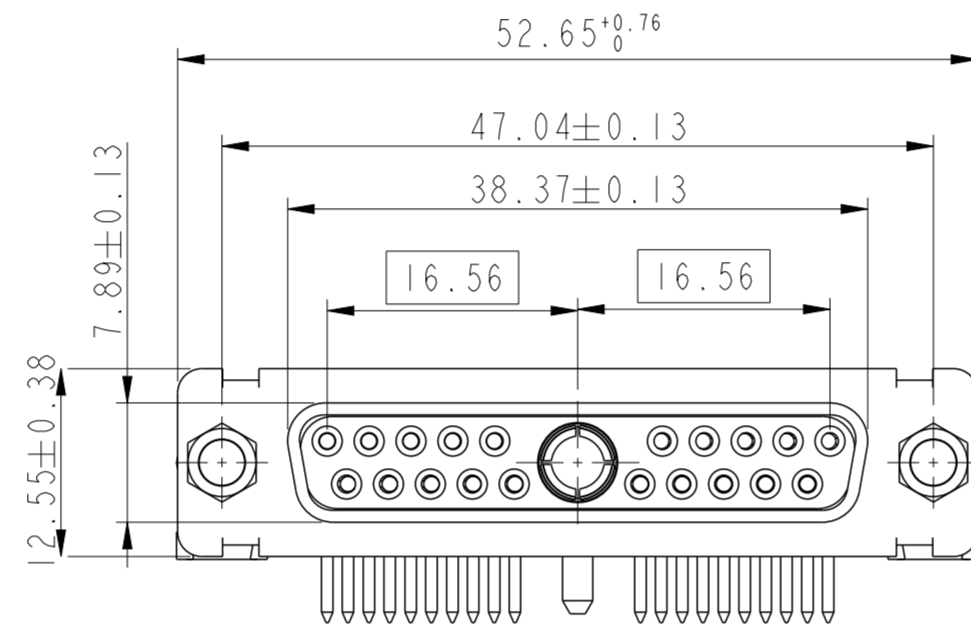
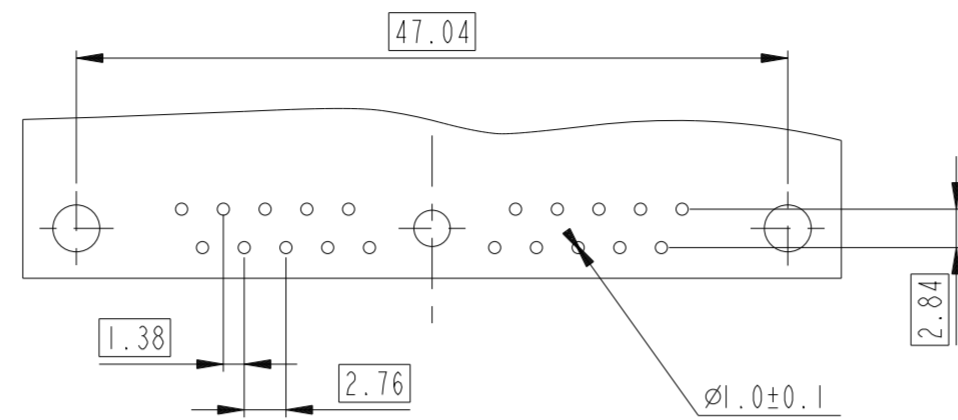
13W3

LAYOUT AND CONNECTOR DIMENSIONS
For PCB hole diameters see table I sheet I



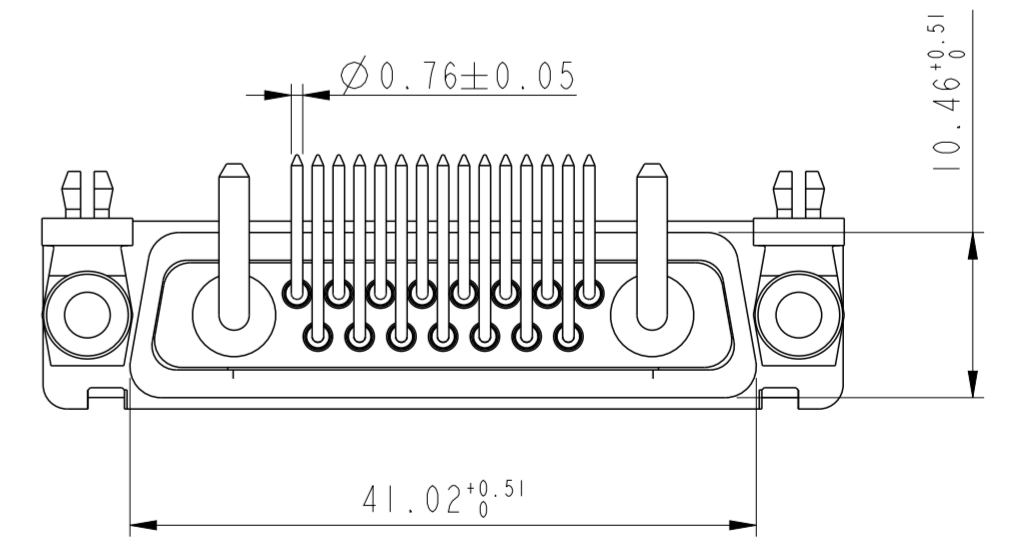
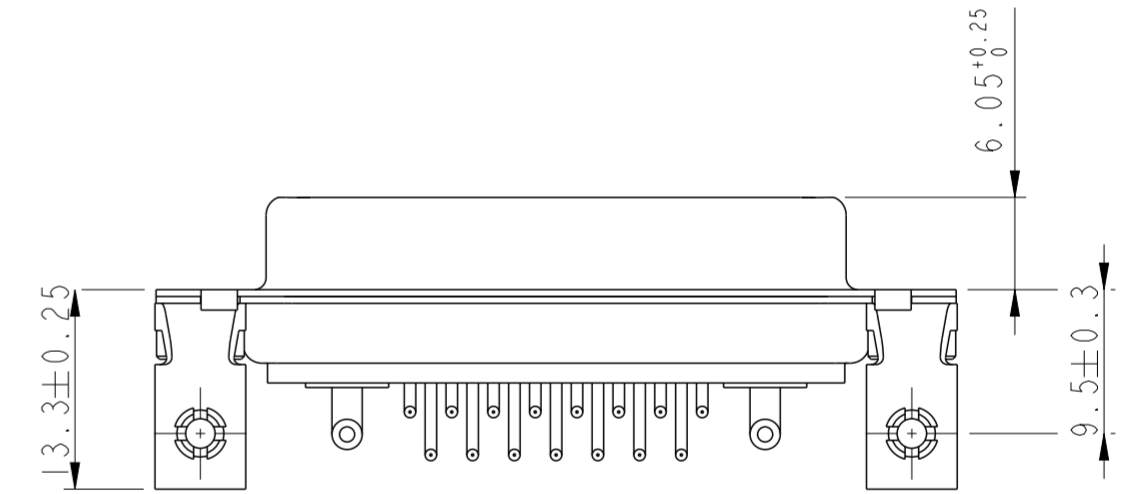
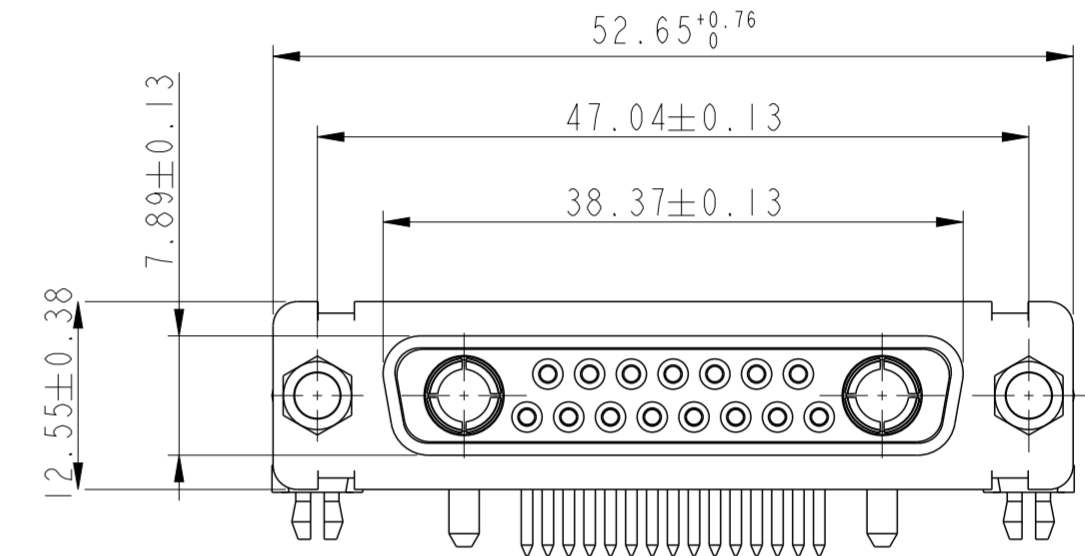
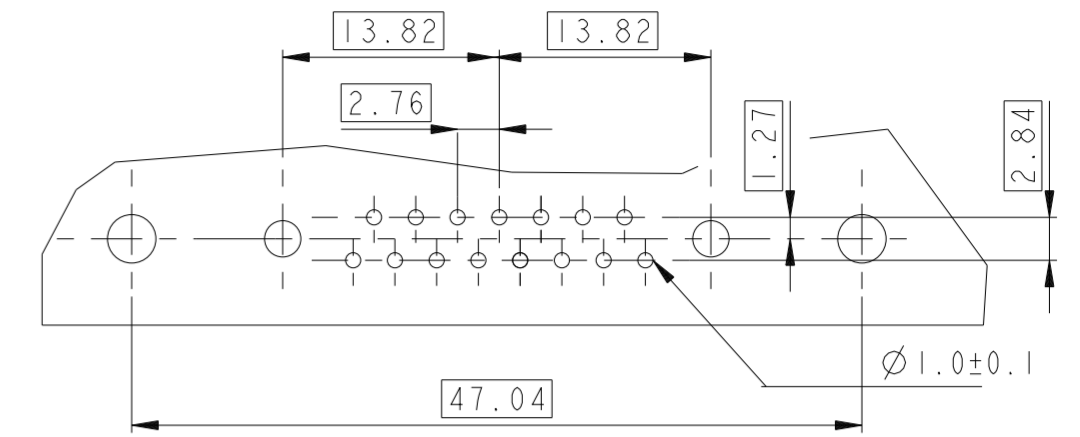
21W1

LAYOUT AND CONNECTOR DIMENSIONS
For PCB hole diameters see table I sheet I



17W2

LAYOUT AND CONNECTOR DIMENSIONS
For PCB hole diameters see table I sheet I



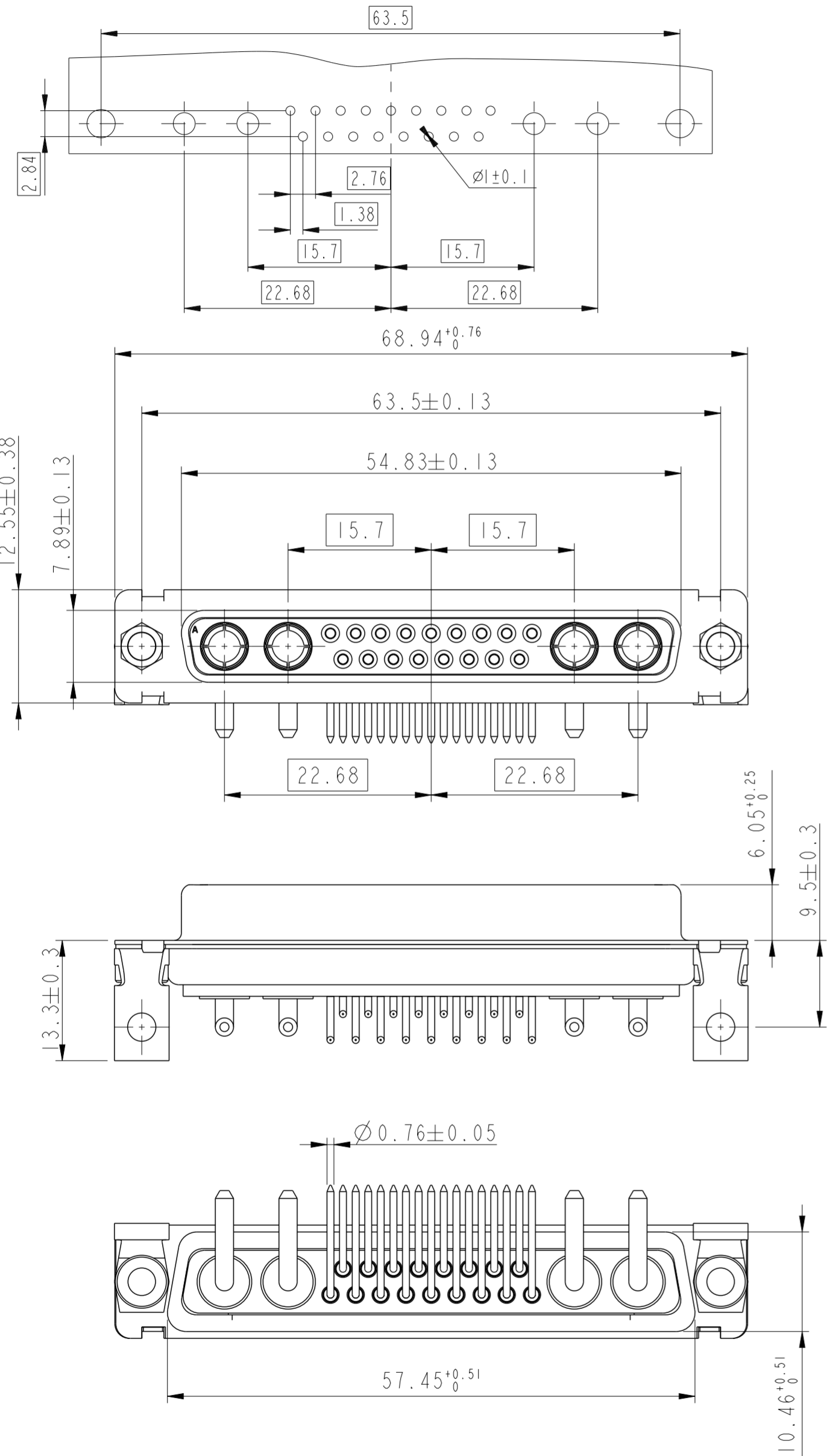
Amphenol
FCi

© 2016 AFCi

spec ref	dr	1, Product Eng	2015/06/12	projection	mm	size	A2	scale	2:1
tolerance std	eng	Paul Mithun	2019/02/20		mm	ecn no	ELX-32325-2	rel level	Released
ISO 406	chr	-	product family						
ISO 1101	appr	K-Paul Bijju	2019/02/20	Amphenol FCI		SUB FEMALE DW US foot print mixed power right angled solder		dwg no C01-8639-2301C	rev E
surface	linear	0.X	±3	cat. no.		Product - Customer Drw		sheet 5 of 6	
ISO 1302	angular	0.XX	±0.10	PDS: Rev :E		STATUS:Released		Printed: Feb 20, 2019	
		0.XXX	±±0.05						
		0°	±2°						

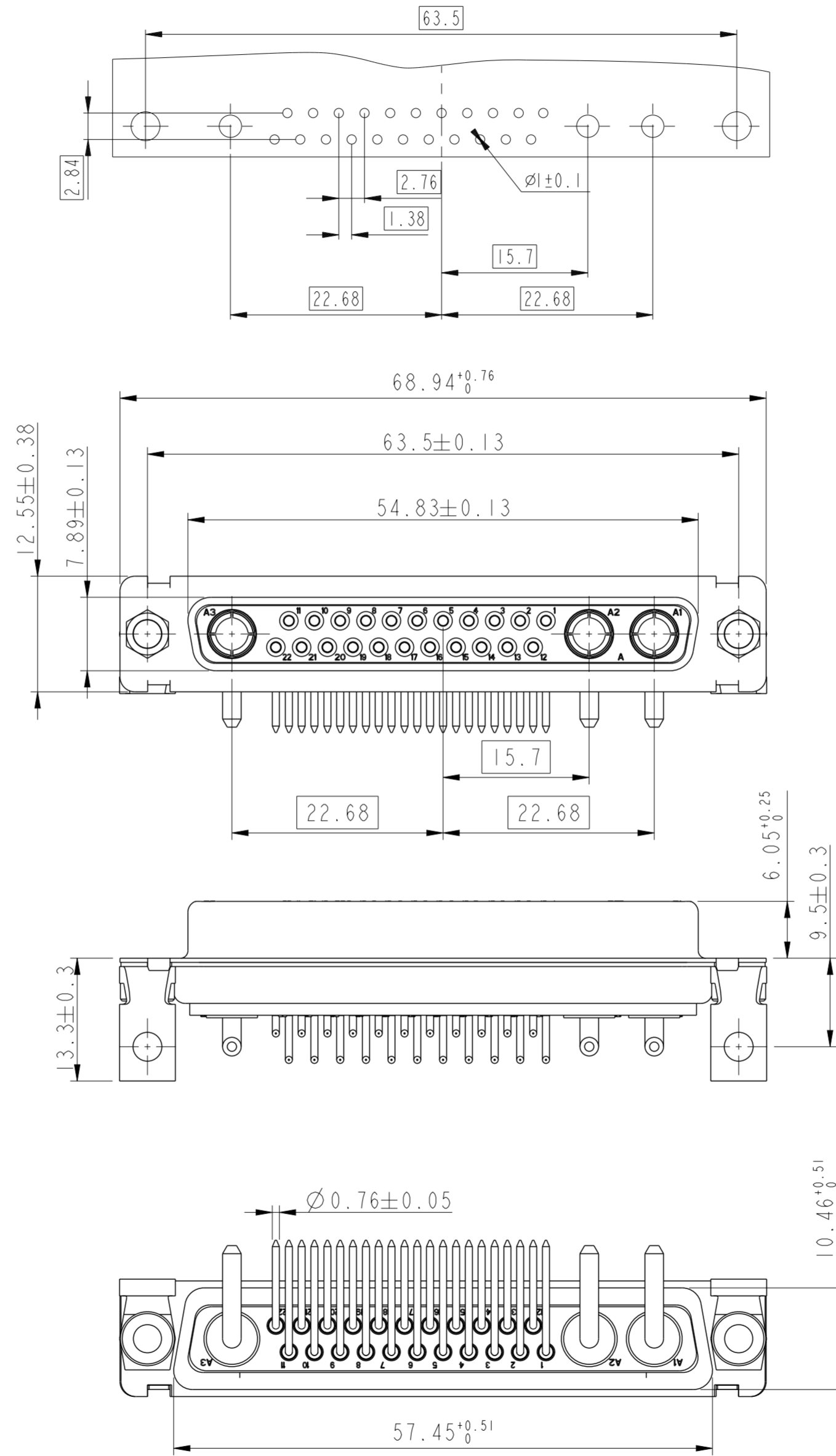
21WA4

LAYOUT AND CONNECTOR DIMENSIONS
For PCB hole diameters see table I sheet 1



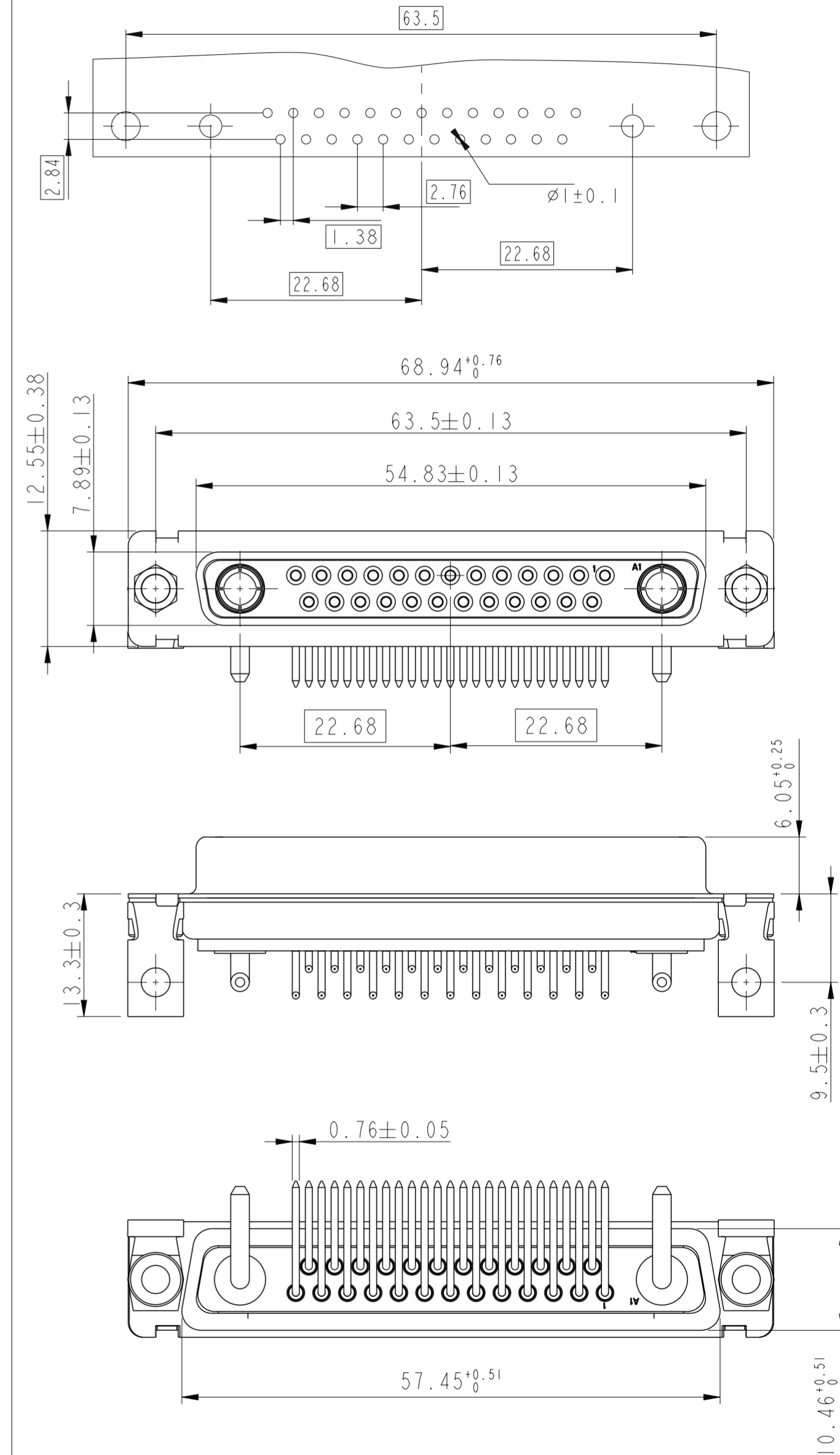
25W3

LAYOUT AND CONNECTOR DIMENSIONS
For PCB hole diameters see table I sheet 1



27W2

LAYOUT AND CONNECTOR DIMENSIONS
For PCB hole diameters see table I sheet 1



Amphenol
FCi

© 2016 AFCI

spec ref	dr	1, Product Eng	2015/06/12	projection	mm	size	A2	scale	2:1
tolerance std	eng	Paul Mithun	2019/02/20		mm	ecn no	ELX-32325-2	rel level	Released
ISO 406	chr	-	2019/02/20						
ISO 1101	appr	K-Paul Biju	2019/02/20	product family	-	rel level	Released		
surface	linear	0.X	±3	Amphenol FCi	title SUB FEMALE DW US foot print mixed power right angled solder cat. no.	dwg no C01-8639-2301C	rev E	Product - Customer Drw	
	angular	0°	±2°					sheet 6 of 6	
ISO 1302									