

PART NUMBER	REV	FIRST USED	TERMINATOR	FEED TYPE	DESCRIPTION
1528373-1	B	-	LEADMAKER	MECH POST FEED	CUTS CARRIER
1528373-2	B	-	BENCH	MECH PRE FEED	CUTS CARRIER
1528373-6	B	-	LEADMAKER	MECH POST FEED	CONTINUOUS CARRIER
7-1528373-1	B	-	LEADMAKER	MECH POST FEED	-1 AND SPARE PARTS
7-1528373-2	B	-	BENCH	MECH PRE FEED	-2 AND SPARE PARTS
7-1528373-6	B	-	LEADMAKER	MECH POST FEED	-6 AND SPARE PARTS
7-1528373-7	A	-	-	-	SPARE PARTS KIT

CRIMP DATA DELPHI TERMINAL DELPHI CRIMP SPECS
TERMINAL NAME: GT280 F SEALED (MP280) RECEPT.

CRIMP	SIZE	TYPE	RANGE
WIRE	1.78 [.070 IN]	F	0.50mm ² - 1.00mm ²
INSUL	4.57 [.180 IN]	0	4.25 MAX [.167 IN MAX]

WIRE STRIP LENGTH	APPL INSTRUCTION
4.60 [.181 IN]	408-8322 & 408-8490

TERMINAL DELPHI VALIDATION SHT DECO0404145	FEED
APPL SPEC	14.00 [.551 IN]

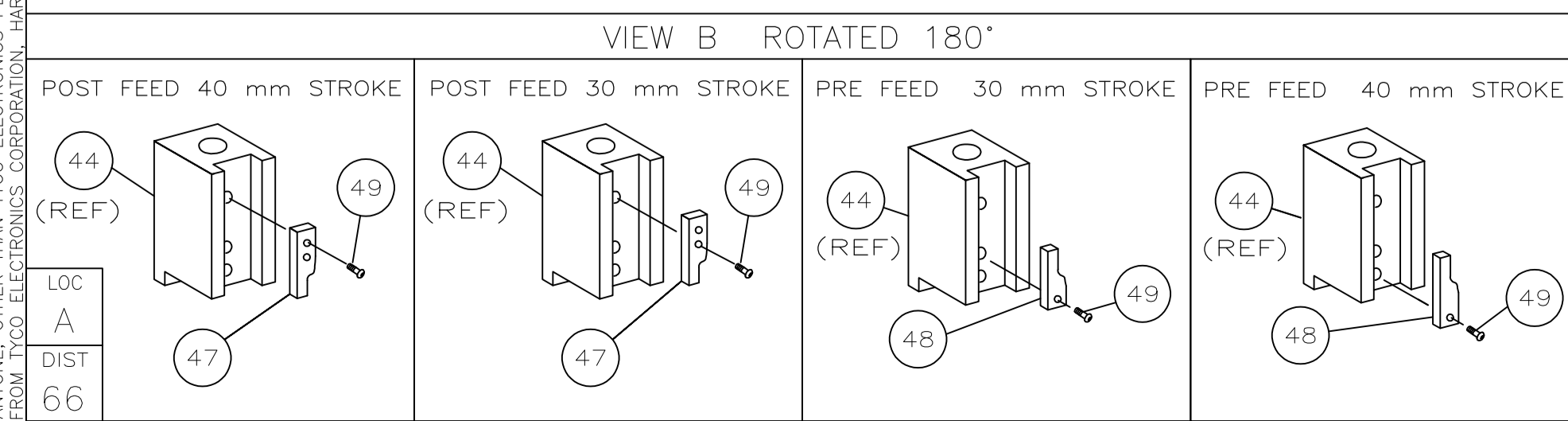
TERMINALS APPLIED

AMP TERM PN	MFR TERM PN	AMP SEAL PN	MFR SEAL PN	
1572443-1	10726097	1572498-1	15366066	-
-	-	-	-	-
-	-	-	-	-
-	-	-	-	-
-	-	-	-	-
-	-	-	-	-
-	-	-	-	-
-	-	-	-	-
-	-	-	-	-

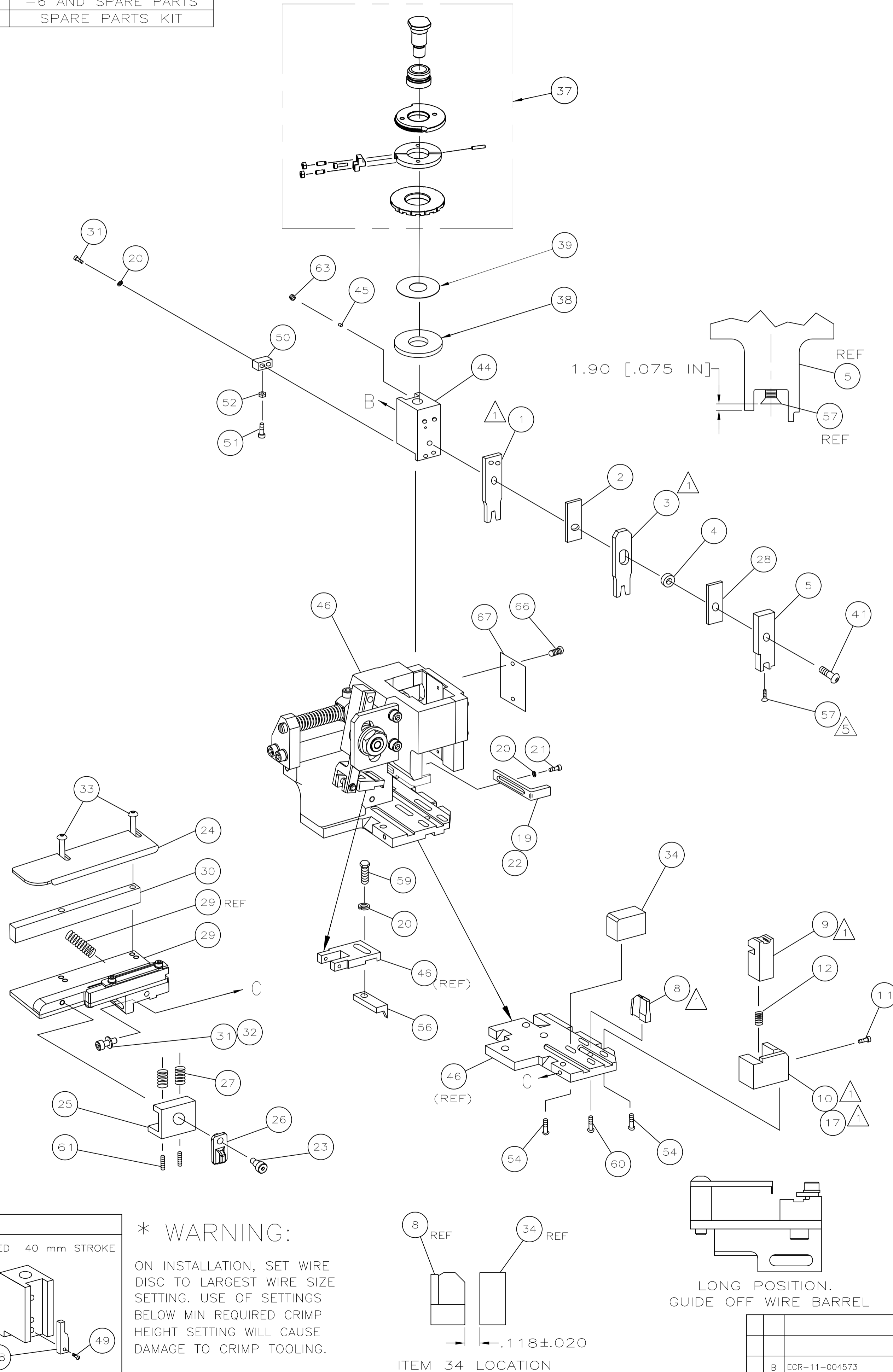
WIRE SIZE	CRIMP HEIGHT	REF SETTING
mm ² AWG		
1.00mm ²	1.40 ±0.05 [.055 ±.002 IN]	B7
0.75mm ²	1.30 ±0.05 [.051 ±.002 IN]	C5
0.50mm ²	1.25 ±0.05 [.049 ±.002 IN]	C9
-	-	-
-	-	-
-	-	-
-	-	-
-	-	-
-	-	-
-	-	-
-	-	-
-	-	-
-	-	-

SET UP GAGE	LAYOUT
458637-3	L1528373

- RECOMMENDED SPARE PARTS.
- GREASE RAM, CAM, CAM FOLLOWER AND FEED ROD LIGHTLY.
- LUBRICATE DAILY PER THE APPLICATOR INSTRUCTION SHEET SUPPLIED WITH THE APPLICATOR.
- THIS APPLICATOR APPLIES TERMINAL WITH A SEAL. INSULATION DIA QUOTED IS OUTSIDE DIAMETER OF SEAL. WIRE INSULATION DIA IS DEPENDENT ON SEAL BEING APPLIED. SEAL INSULATION RANGE 1.86-2.40mm DIA [.073-.094 IN] TERMINAL INS RANGE 1.40-2.10mm [.083-.083 IN].
- APPLY TORQ-SEAL IN ALLEN SOCKET TO FILL HOLE AFTER FLAT HD HAS BEEN ADJUSTED TO CORRECT HEIGHT AT QUALIFICATION. APPLY #1-23419-5 LOC-TITE TO THREADS. CRIMP HEIGHTS CALCULATED BY TYCO ELECTRONICS, TO IMPROVE CRIMP CROSS SECTION.
-



*** WARNING:**
ON INSTALLATION, SET WIRE DISC TO LARGEST WIRE SIZE SETTING. USE OF SETTINGS BELOW MIN REQUIRED CRIMP HEIGHT SETTING WILL CAUSE DAMAGE TO CRIMP TOOLING.



QTY REQD	PER ASSY	PART NO	DESCRIPTION	ITEM NO				
-	1	1	1	1	1	1528373	PRINT, APPLICATOR LOG SHEET	73
-	1	1	1	1	1	1338705-3	DOCUMENTATION PACKAGE	72
-	-	-	-	-	-	-	-	70
-	-	-	-	-	-	-	-	69
-	-	-	-	-	-	-	-	68
-	1	1	1	1	1	461264-5	PLATE, IDENTIFICATION	67
-	2	2	2	2	2	21017-2	SCR,DRIVE(#2x.19)ID PLATE	66
-	-	-	-	-	-	-	-	65
-	-	-	-	-	-	-	-	64
-	1	1	1	1	1	3-18031-0	SCR,SKT SET(M6X6)RAM	63
-	-	-	-	-	-	-	-	62
-	2	2	2	2	2	2-18032-5	SCR,SET(M5X20)DRAG	61
-	1	1	1	1	1	18024-7	SCR,BHC(M4X10)ANVIL	60
-	1	1	1	1	1	5-18022-2	SCR,HEX(M4X8)FEED FINGER	59
-	-	-	-	-	-	-	-	58
-	1	1	1	1	1	985575-3	SCR,FHC(M3X10)DEP	57
-	1	1	1	1	1	1338685-1	PAWL, FEED	56
-	-	-	-	-	-	-	-	55
-	4	4	4	4	4	18024-8	SCR,BHC(M4X12)SHEAR HOLDER	54
-	-	-	-	-	-	-	-	53
-	1	1	1	1	1	18030-1	NUT,HEX(M3)HOLD DOWN	52
-	1	1	1	1	1	811242-5	BUMPER, HOLDDOWN	51
-	1	1	1	1	1	690753-2	SPACER, TONKER	50
-	1	1	1	1	1	18024-3	SCR,BHC(M3X10)CAM	49
-	-	-	-	-	-	-	-	48
-	1	1	1	1	1	1338675-1	CAM, PRE FEED 30 & 40 mm ST	48
-	1	1	1	1	1	1338676-1	CAM, POST FEED 30 & 40 mm ST	47
-	1	1	1	1	1	1320999-3	APPLICATOR BASIC SUBASSY	46
-	1	1	1	1	1	690191-1	PLUG, NYLON	45
-	1	1	1	1	1	1338660-1	RAM	44
-	-	-	-	-	-	-	-	43
-	-	-	-	-	-	-	-	42
-	1	1	1	1	1	2-18024-6	SCR,BHC(M8X25)RAM	41
-	-	-	-	-	-	-	-	40
-	1	1	1	1	1	690125-1	SHIM SUBASSY	39
-	1	1	1	1	1	469367-9	SPACER, FINE ADJUST	38
-	1	1	1	1	1	879103-2	FINE ADJUST HEAD SUBASSY	37
-	-	-	-	-	-	-	-	36
-	-	-	-	-	-	-	-	35
-	1	1	1	1	1	1320934-1	SUPPORT, TERMINAL	34
-	2	2	2	2	2	1-18024-0	SCR,BHC(M4X20)STRIP GUIDE	33
-	1	1	1	1	1	18027-2	WASHER, FLAT(M4)	32
-	3	3	3	3	3	1-18023-2	SCR,SKT CAP(M4X12)MOUNT BLOCK	31
-	1	1	1	1	1	1320908-8	SPACER, STRIP GUIDE	30
-	1	1	1	1	1	1633073-1	STRIP GUIDE PLATE ASSY	29
-	1	1	1	1	1	1-455888-6	SPACER, FRONT SHEAR DEP	28
-	2	2	2	2	2	1-22284-0	SPRING, DRAG	27
-	1	1	1	1	1	356835-1	LEVER, DRAG RELEASE	26
-	1	1	1	1	1	240792-1	DRAG, TERMINAL	25
-	1	1	1	1	1	1320928-1	PLATE, STRIP GUIDE	24
-	1	1	1	1	1	980371-4	SCR,SHC SHLD	23
-	1	-	1	-	-	690472-2	STRIPPER	22
-	1	1	1	1	1	1-18023-1	SCR,SHC(M4X10)STRIPPER	21
-	4	4	4	4	4	18025-2	WASHER,LOCK(M4)STRIPPER	20
-	-	-	-	-	-	690472-1	STRIPPER	19
-	-	-	-	-	-	1338684-2	HOLDER, SHEAR, FRONT (NO-CUT)	18
-	-	-	-	-	-	-	-	17
-	-	-	-	-	-	-	-	16
-	-	-	-	-	-	-	-	15
-	-	-	-	-	-	-	-	14
-	-	-	-	-	-	-	-	13
-	1	1	1	1	1	3-22280-3	SPRING, SHEAR	12
-	1	1	1	1	1	356885-5	STOP, SHEAR	11
-	-	-	-	-	-	-	-	10
-	1	1	1	1	1	1-1320921-0	HOLDER, SHEAR, FRONT (CUT)	9
-	1	1	1	1	1	318707-3	SHEAR, FLOAT (FRONT)	8
-	1	2	2	2	2	5-1333203-9	ANVIL	7
-	-	-	-	-	-	-	-	6
-	-	-	-	-	-	-	-	5
-	1	1	1	1	1	1338680-2	DEPRESSOR, SHEAR (FRONT)	5
-	1	1	1	1	1	238011-2	SPACER, BLOCK CRIMPER	4
-	1	2	2	2	2	4-456135-9	CRIMPER, INSULATION	3
-	1	1	1	1	1	1-455888-0	SPACER, CRIMPER	2
-	1	2	2	2	2	456404-9	CRIMPER, WIRE	1

LONG POSITION. GUIDE OFF WIRE BARREL

ITEM 34 LOCATION .118 ±.020

QTY REQD PER ASSY

PARTS LIST

DWN L.LOFTHOUSE

CHK -

APVD F.BACKHURST

NAME

SCALE - SIZE A1 DRAWING NO 1528373 SHEET 1 of 1 REV B

3308-8 (1/08)

8 7 6 5 4 3

CUSTOMER ACCESSIBLE PRODUCTION DRAWING