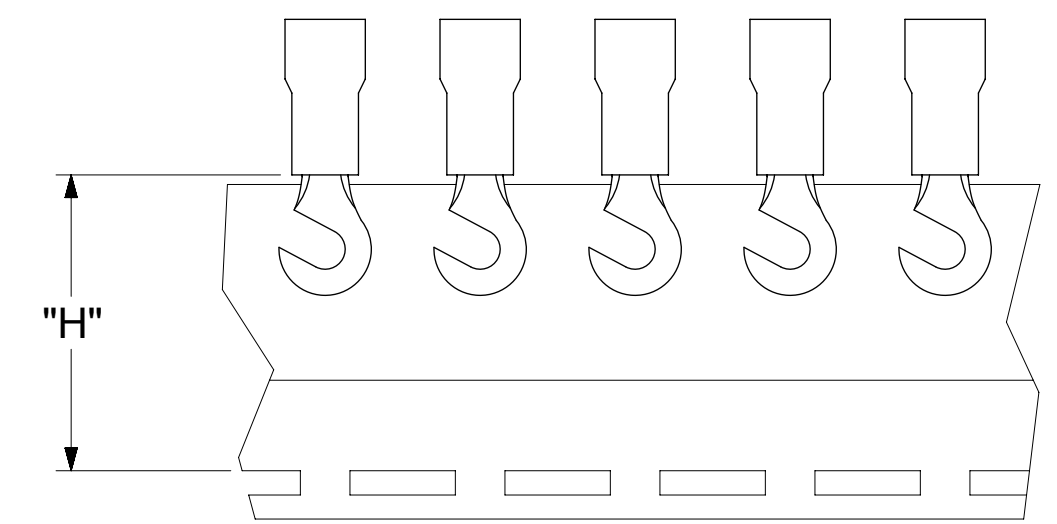
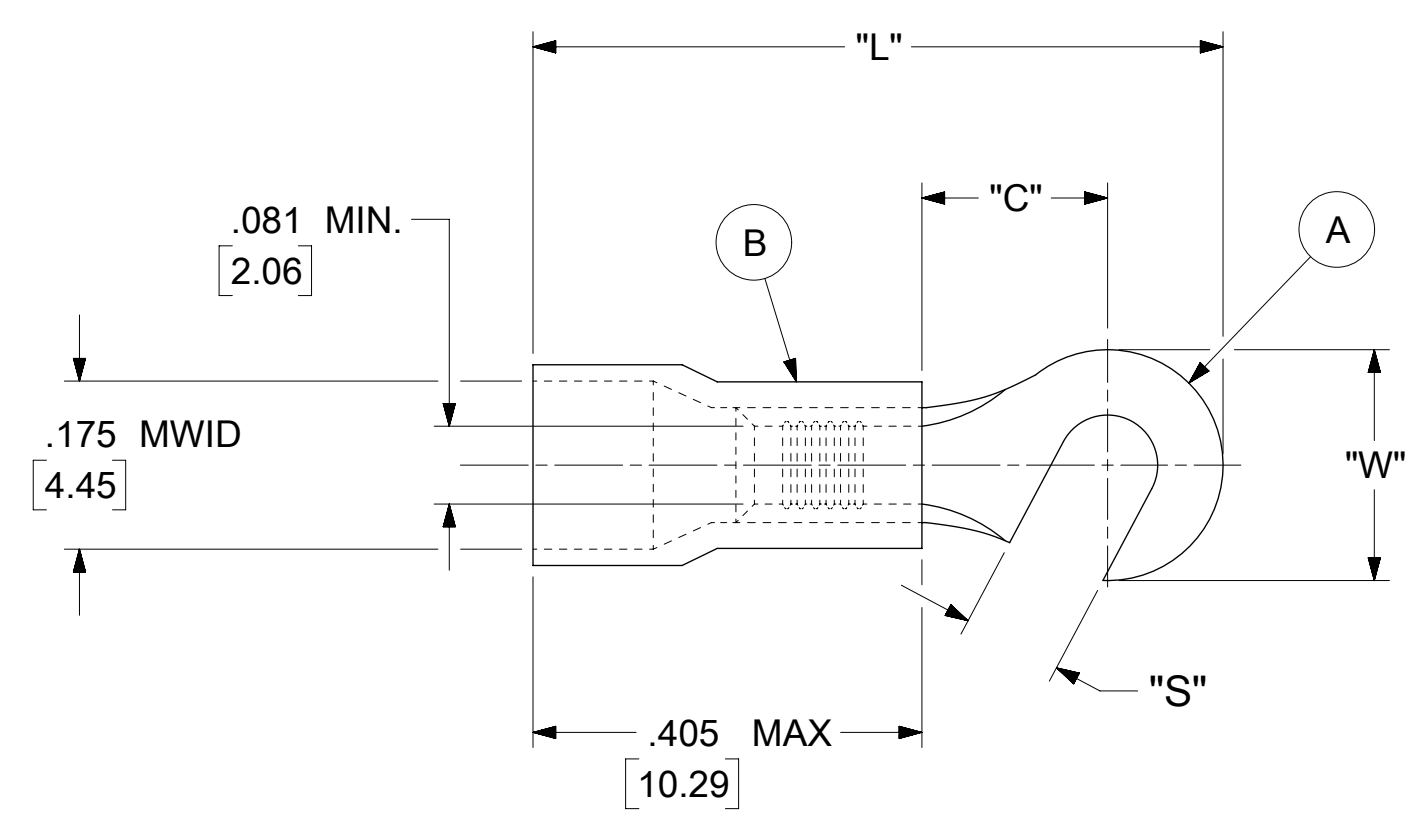


LOOSE PIECE		TAPE MOUNTED		SPECIFICATIONS					
MATERIAL NUMBER	ENGINEERING NUMBER	MATERIAL NUMBER	ENGINEERING NUMBER	STUD SIZE	"S" ±.005 [0.13]	"W" ±.010 [0.25]	"C" MIN.	"L" MAX.	"H"
191790008	BB-219-06X	191790009	BB-219-06XT	6	.146 [3.71]	.350 [8.89]	.271 [6.88]	.902 [22.91]	.980 [24.89]
191790010	BB-219-08X	191790011	BB-219-08XT	8	.173 [4.39]				
191790012	BB-219-10X	191790013	BB-219-10XT	10	.198 [5.03]				



- NOTES:
- MATERIAL:
    - (A). TERMINAL: COPPER ( STOCK THICKNESS .031±.001 [0.79] )
    - PLATING: ELECTRO-TIN (.0003 MIN.)
    - (B). INSULATION: MOLDED PVC (BLUE)
  - MWID: MAXIMUM WIRE INSULATION DIAMETER
  - WIRE SIZE: 16 -14 AWG  
1.0 -2.5 MM<sup>2</sup>
  - "UL" LISTING #E32244  
"CSA" LISTING #18689
  - ALL DIMENSIONS IN INCHES/[MM].
  - PARTS ARE ROHS COMPLIANT.
  - DIMS. SHOWN ARE FOR REFERENCE ONLY.

SYMBOLS	THIS DRAWING CONTAINS INFORMATION THAT IS PROPRIETARY TO MOLEX ELECTRONIC TECHNOLOGIES, LLC AND SHOULD NOT BE USED WITHOUT WRITTEN PERMISSION									
	DIMENSION UNITS		SCALE		CURRENT REV DESC:					
	INCH/MM		NTS		EC NO: 625848 DRWN: ABENJAMINLW 2019/09/16 CHK'D: GROJAS01 2019/10/17 APPR: JMACNEIL 2019/10/18 INITIAL REVISION: DRWN: KO 1984/11/06 APPR:					
	GENERAL TOLERANCES (UNLESS SPECIFIED)									
▽ = 0	4 PLACES	±	---	±	---	PRODUCT CUSTOMER DRAWING DOCUMENT NUMBER: BBCD20102 DOC TYPE: PSD DOC PART: 001 REVISION: A MATERIAL NUMBER: SEE TABLE CUSTOMER: GENERAL MARKET SHEET NUMBER: 1 OF 1				
▽ = 0	3 PLACES	±	---	±	.005					
▽ = 0	2 PLACES	±	0.13	±	.01					
▽ = 0	1 PLACE	±	0.25	±	---					
☒ = 0	0 PLACES	±	---	±	---	THIRD ANGLE PROJECTION DRAWING: C-SIZE SERIES: 19179				
■ = 0	DRAFT WHERE APPLICABLE MUST REMAIN WITHIN DIMENSIONS		ANGULAR TOL ± 0.5°							
▽ = 0										