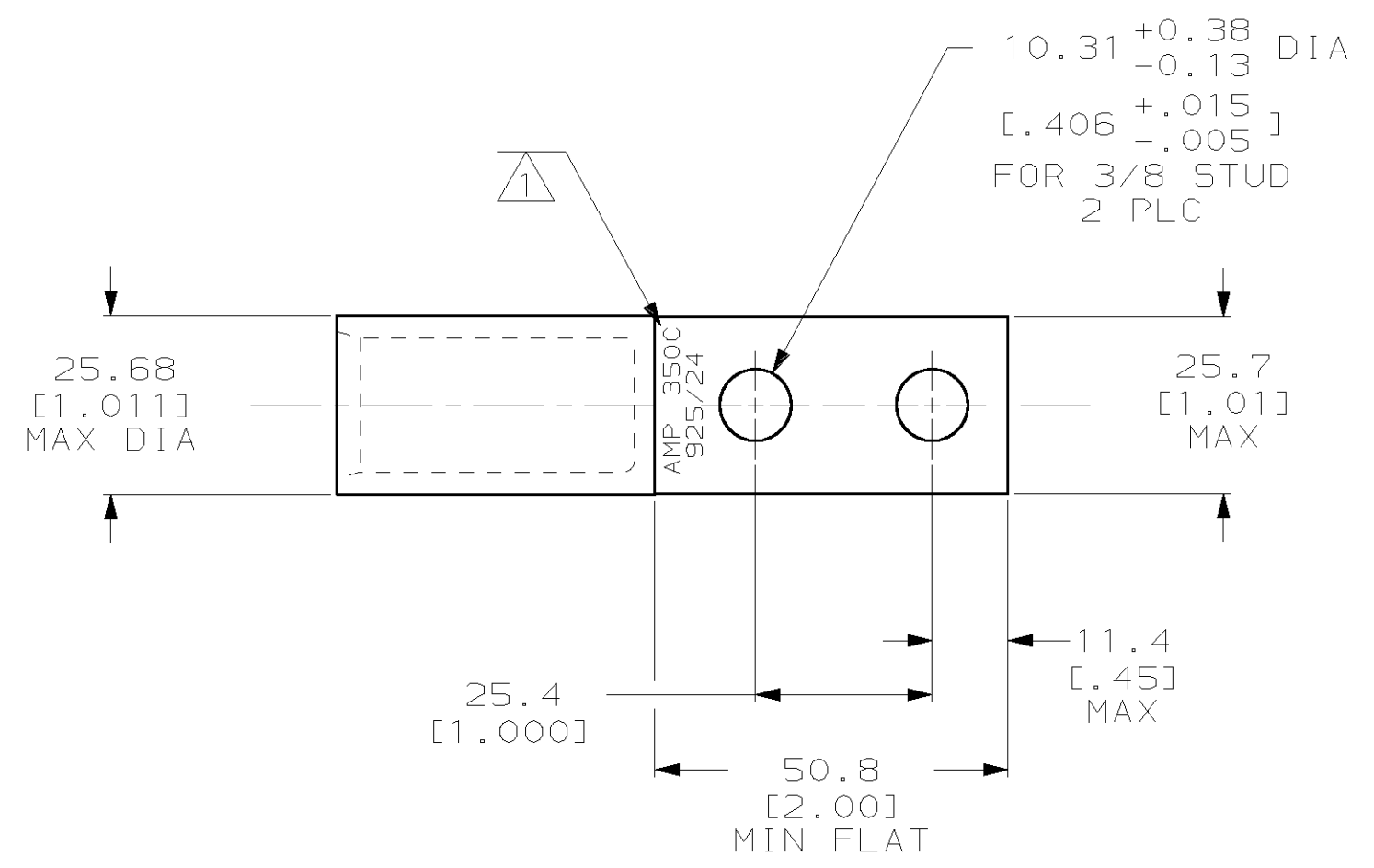
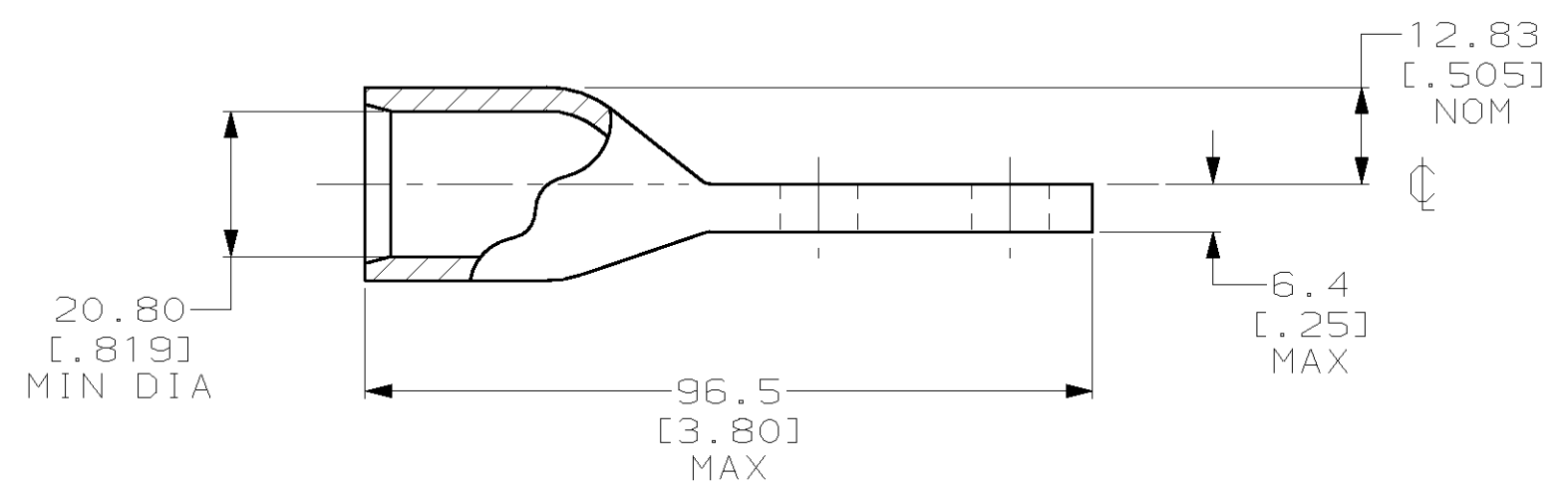


THIS DRAWING IS UNPUBLISHED. RELEASED FOR PUBLICATION ,19 .
 © COPYRIGHT 19 BY AMP INCORPORATED. ALL RIGHTS RESERVED.

LOC	DIST	REVISIONS			
P	LTR	DESCRIPTION	DATE	DWN	APVD
G	86	E	REV PER 0G3A-0561-01	07OCT02	JR MS



① STAMP AMP 350C 925/24 APPROX AS SHOWN



277145-1
AMP PART NUMBER

AMP INCORPORATED CUSTOMER SERVICE SYSTEMS

THIS DRAWING IS A CONTROLLED DOCUMENT FOR AMP INCORPORATED. IT IS SUBJECT TO CHANGE AND THE CONTROLLING ENGINEERING ORGANIZATION SHOULD BE CONTACTED FOR THE LATEST REVISION.

DWN	DK SCHRUM	02FEB96
CHK	WJ VOCKROTH	02FEB96
APVD	JL MECKLEY	02FEB96
PRODUCT SPEC	108-30200	
APPLICATION SPEC	-	
WEIGHT	.242 lbs	

AMP AMP Incorporated Harrisburg, PA 17105-3608	
NAME TERMINAL, CENTERLINE TONGUE, AMPOWER, WIRE SIZE: 350 MCM	
SIZE	CAGE CODE
A3	00779
DRAWING NO C-277145	
SCALE	SHEET
1:1	1 OF 1
REV	E

FOR ADDITIONAL PRODUCT INFORMATION OR COPIES OF DRAWINGS AND TECHNICAL DOCUMENTS	PRODUCT INFORMATION CENTER 1-800-522-6752	RECOMMENDED OPERATING TEMPERATURE: 170° MAX
FOR APPLICATION TOOLING INFORMATION	TOOLING ASSISTANCE CENTER 1-800-722-1111	VOLTAGE RATING: NOT APPLICABLE
FOR ORDER ENTRY	1-800-526-5142	WIRE CROSS SECTIONAL AREA RANGE: 0.16-0.19mm ² [325-375] MCM SOLID OR STRANDED

DIMENSIONS: mm [INCHES]	TOLERANCES UNLESS OTHERWISE SPECIFIED:
	0 PLC ±-
	1 PLC ±-
	2 PLC ±0.20 [.008]
	3 PLC ±-
	4 PLC ±-
	ANGLES ±-
MATERIAL COPPER PER ASTM B-75 ANNEALED	FINISH TIN PLATE 0.00381 [.000150] MIN THK PER MIL-T-10727