

	20	19	18	17	16	15	14	13	12	11	10	9	8	7	6	5	4	3	2	1			
	PART NO.	CKT SIZE	DIM 'A'	DIM 'B'	DIM 'C'	DIM 'D' REF	DIM 'E'																
M	75730-0104	4	13.78/1.543	12.00/1.472	3.06/1.20	7.06/2.78	1.60/0.62 TO 2.44/0.96																
	75730-0105	5	17.78/1.700	16.00/1.630																			
	75730-0106	6	21.78/1.857	20.00/1.787																			
	75730-0107	7	25.78/1.015	24.00/1.945																			
	75730-0108	8	29.78/1.172	28.00/1.102																			
L	75730-0109	9	33.78/1.330	32.00/1.260																			
	75730-0110	10	37.78/1.487	36.00/1.417																			
	75730-0111	11	41.78/1.645	40.00/1.575																			
	75730-0112	12	45.78/1.802	44.00/1.732																			
K	75730-0113	13	49.78/1.960	48.00/1.890																			
	75730-0114	14	53.78/2.117	52.00/2.047																			
	75730-0115	15	57.78/2.275	56.00/2.205																			
	75730-0116	16	61.78/2.433	60.00/2.362																			
	75730-0117	17	65.78/2.590	64.00/2.520																			
J	75730-0118	18	69.78/2.747	68.00/2.677																			
	75730-0119	19	73.78/2.905	72.00/2.835																			
	75730-0120	20	77.78/3.062	76.00/2.992																			
	75730-0121	21	81.78/3.220	80.00/3.150																			
	75730-0122	22	85.78/3.377	84.00/3.307																			
I	75730-0123	23	89.78/3.535	88.00/3.465																			
	75730-0124	24	93.78/3.692	92.00/3.622																			
	75730-0150	MIXED CL	83.78/3.298	82.00/3.228																			
H	75730-0204	4	13.78/1.543	12.00/1.472	3.81/1.50	7.82/3.08	3.18/1.25																
	75730-0205	5	17.78/1.700	16.00/1.630																			
	75730-0206	6	21.78/1.857	20.00/1.787																			
	75730-0207	7	25.78/1.015	24.00/1.945																			
	75730-0208	8	29.78/1.172	28.00/1.102																			
G	75730-0209	9	33.78/1.330	32.00/1.260																			
	75730-0210	10	37.78/1.487	36.00/1.417																			
	75730-0211	11	41.78/1.645	40.00/1.575																			
	75730-0212	12	45.78/1.802	44.00/1.732																			
F	75730-0213	13	49.78/1.960	48.00/1.890																			
	75730-0214	14	53.78/2.117	52.00/2.047																			
	75730-0215	15	57.78/2.275	56.00/2.205																			
	75730-0216	16	61.78/2.433	60.00/2.362																			
	75730-0217	17	65.78/2.590	64.00/2.520																			
E	75730-0218	18	69.78/2.747	68.00/2.677																			
	75730-0219	19	73.78/2.905	72.00/2.835																			
	75730-0220	20	77.78/3.062	76.00/2.992																			
	75730-0221	21	81.78/3.220	80.00/3.150																			
	75730-0222	22	85.78/3.377	84.00/3.307																			
D	75730-0223	23	89.78/3.535	88.00/3.465																			
	75730-0224	24	93.78/3.692	92.00/3.622																			
	75730-0250	MIXED CL	83.78/3.298	82.00/3.228																			
	75730-0251	MIXED CL	83.78/3.298	82.00/3.228																			

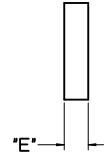
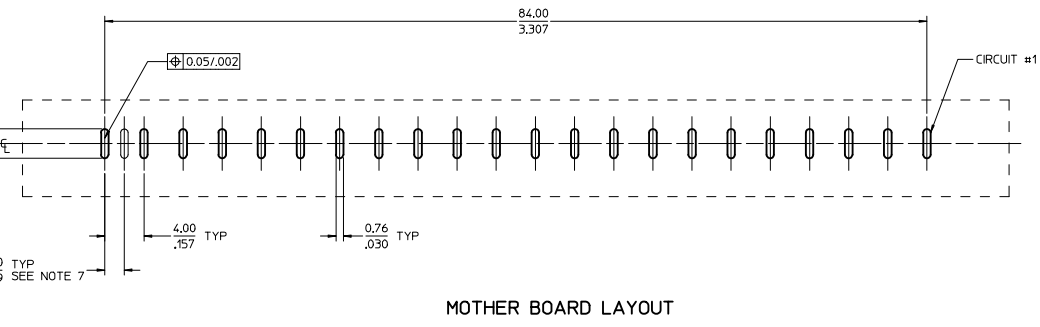
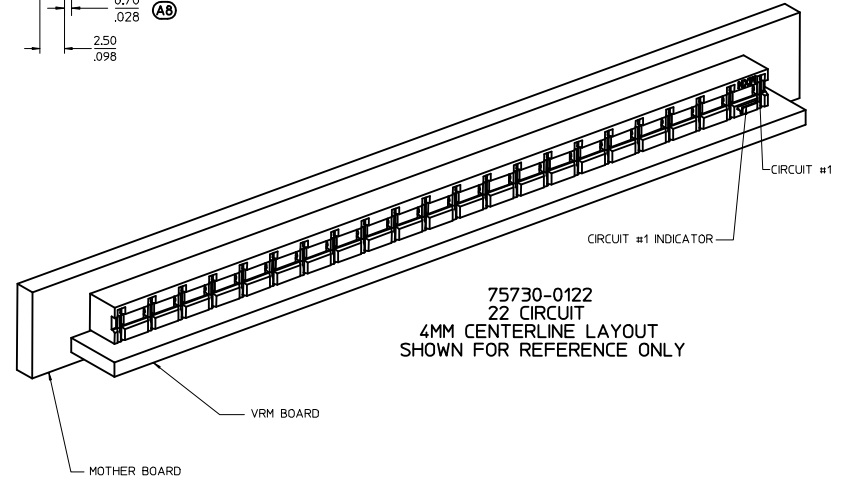
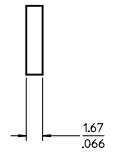
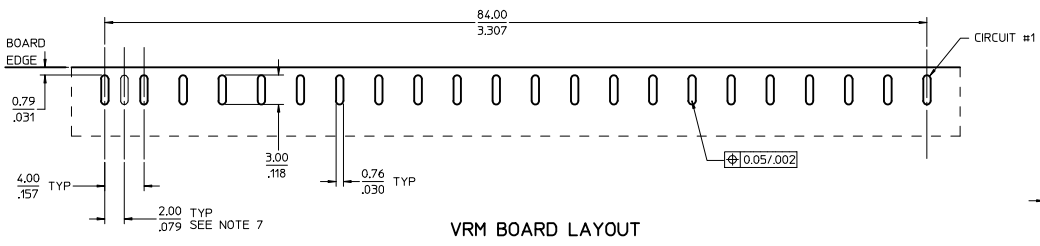
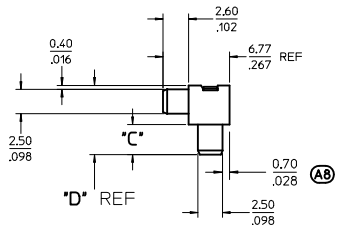
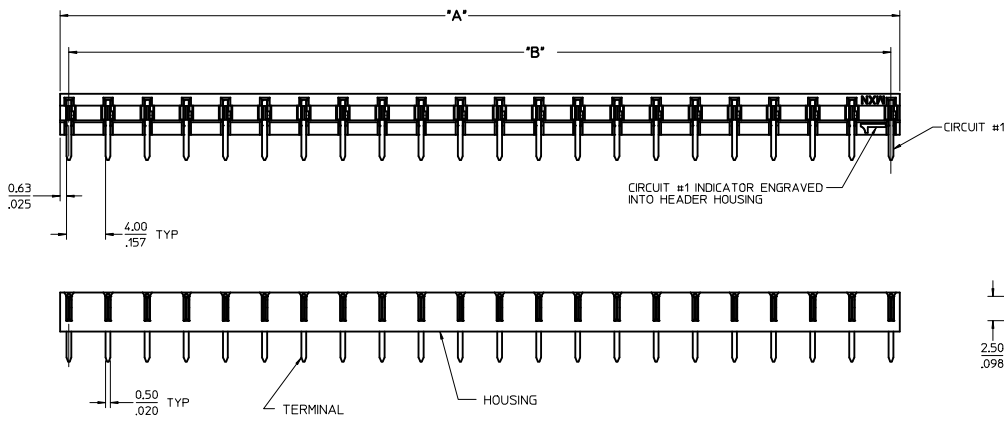
NOTES:  
1. MATERIALS:  
- HOUSING: LCP, 30% GLASS FILLED, 94V-0, COLOR: BLACK  
- TERMINAL: COPPER ALLOY  
PLATING:  
- 2.50  $\mu$ m/100  $\mu$ m MIN TIN OVER  
- 1.25  $\mu$ m/50  $\mu$ m MIN NICKEL OVERALL  
2. PRODUCT SPEC: PS-75730  
3. MODULE IS DESIGNED FOR SOLDERING TO THE PCB  
4. MODULE IS RoHS COMPLIANT  
5. BOW, FLATNESS AND CAMBER SPECIFICATIONS ARE 0.25/0.010 PER INCH  
6. PARTS TO BE PACKAGED PER MOLEX PACKAGING SPEC PK-75730-118

(A9)

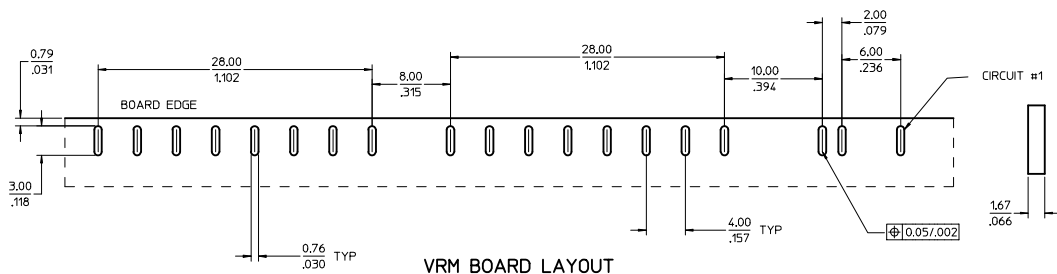
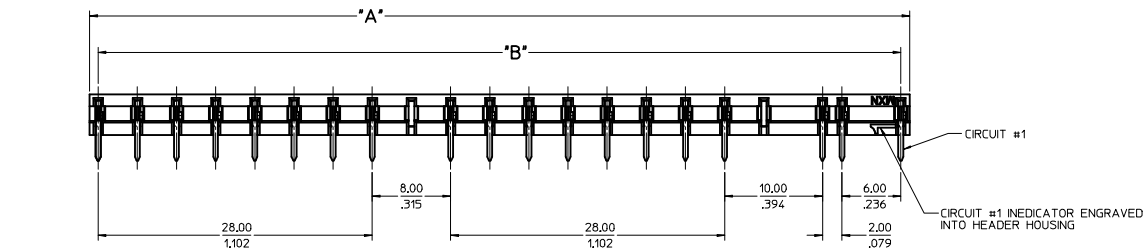
(A9)

(A9)

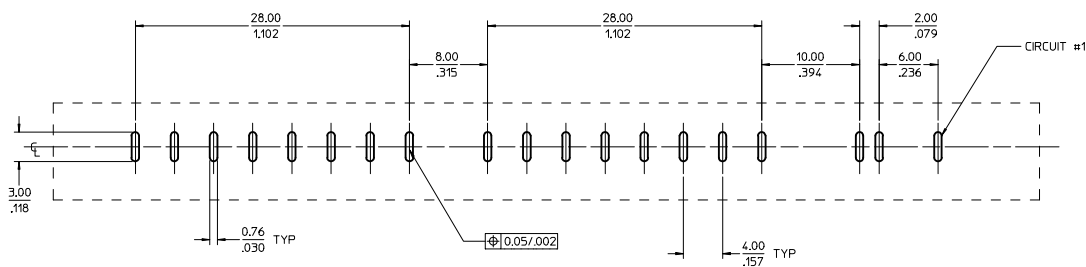
REMOVE -0147 EC NO: UCP2012-2242 DRAWN: BANDURA 2012/01/17 CHKD: APPR: APATEL REV:	QUALITY SYMBOLS	GENERAL TOLERANCES (UNLESS SPECIFIED)	DIMENSION STYLE	SCALE	DESIGN UNITS	THIRD ANGLE PROJECTION
	▽=0	4 PLACES ±.005 ±.005	MM/IN	1:1	METRIC	
	▽=0	3 PLACES ±.013 ±.010				
	▽=0	2 PLACES ±.025 ±.025				
		ANGULAR ±1/2°				
		DRAFT WHERE APPLICABLE MUST REMAIN WITHIN DIMENSIONS	SEE CHART			
			DRAWN BY DATE	CHECKED BY DATE	APPROVED BY DATE	
			ADRNATNOL 2005/05/03	APATEL 2005/05/03	APATEL 2005/05/03	
			MOLEX INCORPORATED DOCUMENT NO. SD-75730-118 SHEET NO. 1 OF 4			
			THIS DRAWING CONTAINS INFORMATION THAT IS PROPRIETARY TO MOLEX INCORPORATED AND SHOULD NOT BE USED WITHOUT WRITTEN PERMISSION			



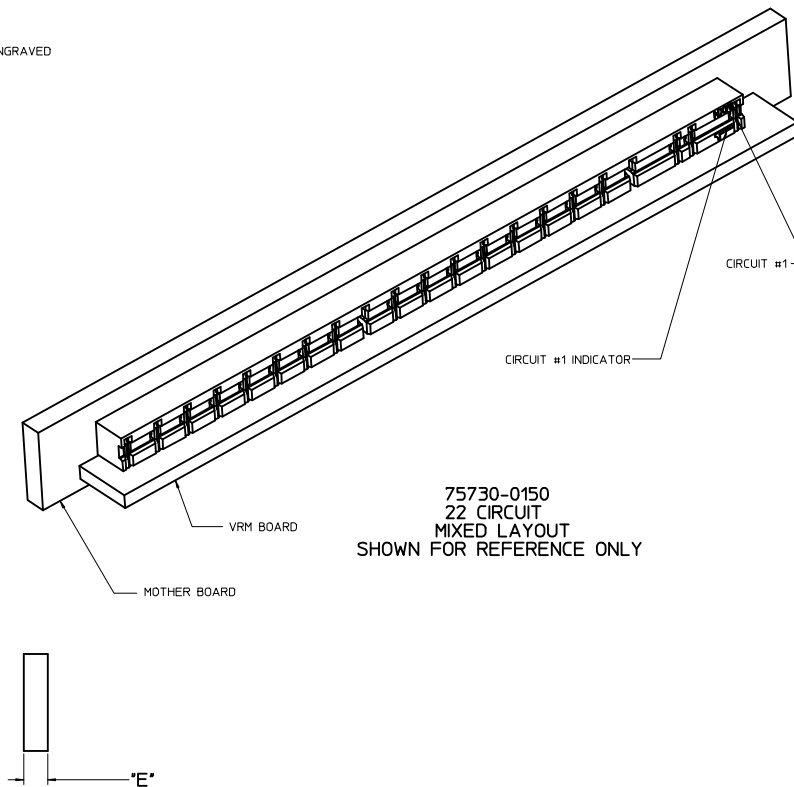
SEE SHEET 1 IEC NO: UCF2012-2242 DRAWN BY: DRW:RABANDURA CHKD: CHYD: APPR: APATEL DATE: 2012/01/17 2013/12/19	QUALITY SYMBOLS	GENERAL TOLERANCES (UNLESS SPECIFIED)	DIMENSION STYLE	SCALE	DESIGN UNITS	THIRD ANGLE PROJECTION	
	▽=0	mm INCH	MM/IN	4:1	METRIC	☉	
	▽=0	4 PLACES ± --- ± --- 3 PLACES ± --- ± .005 2 PLACES ± 0.13 ± .010 1 PLACE ± 0.25 ± ---	DRAWN BY: ADRA1NOL CHECKED BY: DATE APATEL 2005/05/03 APATEL 2005/05/03	DATE	DATE	DATE	TITLE
	▽=0	ANGULAR ±1/2°	APATEL 2005/05/03	DATE	DATE	DATE	ASSEMBLY VRM HEADER FOR BOARD TO BOARD
	DRAFT WHERE APPLICABLE MUST REMAIN WITHIN DIMENSIONS		MATERIAL NO. SEE CHART	DOCUMENT NO. SD-75730-118		MOLEX INCORPORATED	
			SIZE D				



VRM BOARD LAYOUT



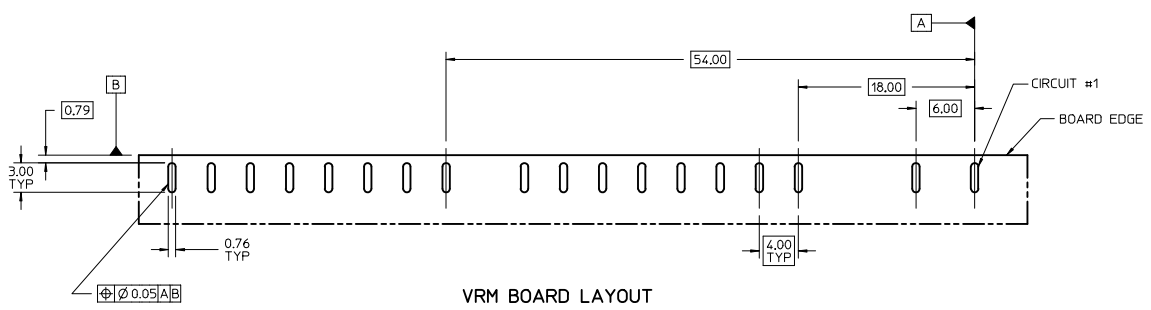
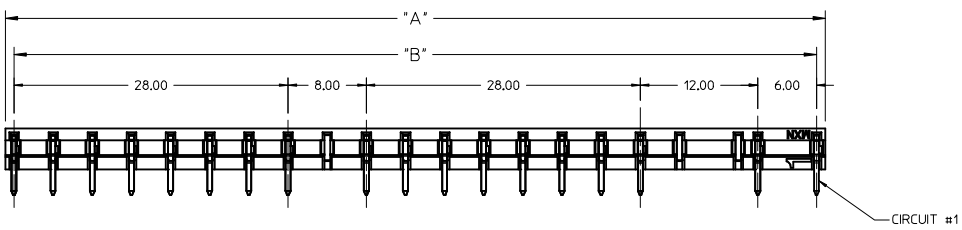
MOTHER BOARD LAYOUT



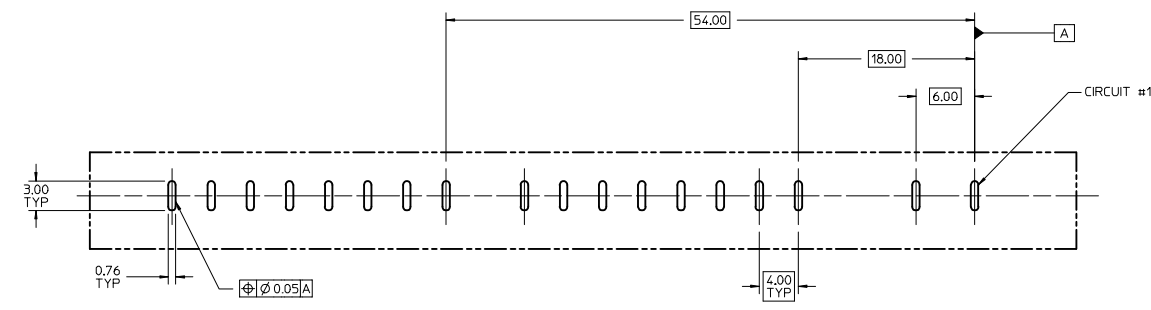
75730-0150  
22 CIRCUIT  
MIXED LAYOUT  
SHOWN FOR REFERENCE ONLY

SEE SHEET 1 IEC NO. UCF2012-2242 DRAWN BY: DRW:RMBANDURA CHKD: APATTEL APPR: APATTEL DATE: 2012/01/17 2013/12/19	QUALITY SYMBOLS	GENERAL TOLERANCES (UNLESS SPECIFIED)	DIMENSION STYLE	SCALE	DESIGN UNITS	THIRD ANGLE PROJECTION	
	$\nabla=0$	mm INCH	MM/IN	4:1	METRIC		
	$\nabla=0$	4 PLACES ± --- ± --- 3 PLACES ± --- ± .005 2 PLACES ± 0.13 ± .010 1 PLACE ± 0.25 ± ---	DRAWN BY: ADRA TNOL CHECKED BY: DATE APATEL 2005/05/03 APATEL 2005/05/03	TITLE	ASSEMBLY VRM HEADER FOR BOARD TO BOARD		
	$\nabla=0$	DRAFT WHERE APPLICABLE MUST REMAIN WITHIN DIMENSIONS	APPROVED BY: DATE APATEL 2005/05/03	MATERIAL NO. SEE CHART	DOCUMENT NO. SD-75730-118	MOLEX INCORPORATED	
		SIZE D	THIS DRAWING CONTAINS INFORMATION THAT IS PROPRIETARY TO MOLEX INCORPORATED AND SHOULD NOT BE USED WITHOUT WRITTEN PERMISSION				

20 19 18 17 16 15 14 13 12 11 10 9 8 7 6 5 4 3 2 1

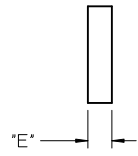
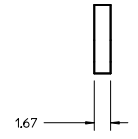


VRM BOARD LAYOUT



MOTHER BOARD LAYOUT

75730-0251 SHOWN  
18 CIRCUIT  
MIXED LAYOUT



SEE SHEET 1 IEC NO: UCF2012-2242 DRAWN BY: DRW:RABANDIRA CHKD: CHYD: APPR: APATEL 2012/01/17 2013/12/19	QUALITY SYMBOLS	GENERAL TOLERANCES (UNLESS SPECIFIED)	DIMENSION STYLE	SCALE	DESIGN UNITS	THIRD ANGLE PROJECTION	
	▽=0 ▽=0 ▽=0	mm INCH 4 PLACES ±.05 ±.005 3 PLACES ±.01 ±.010 2 PLACES ±0.25 ±.005 1 PLACE ±.025 ±.005 ANGULAR ±1/2°	MM/IN 4:1	METRIC	DATE 2005/05/03 DATE 2005/05/03 DATE 2005/05/03	TITLE ASSEMBLY VRM HEADER FOR BOARD TO BOARD	MOLEX INCORPORATED
	DRAFT WHERE APPLICABLE MUST REMAIN WITHIN DIMENSIONS	MATERIAL NO. SEE CHART	DOCUMENT NO. SD-75730-118	SHEET NO. 4 OF 4			
	THIS DRAWING CONTAINS INFORMATION THAT IS PROPRIETARY TO MOLEX INCORPORATED AND SHOULD NOT BE USED WITHOUT WRITTEN PERMISSION						

19 18 17 16 15 14 13 12 11 10 9 8 7 6 5 4 3 2 1