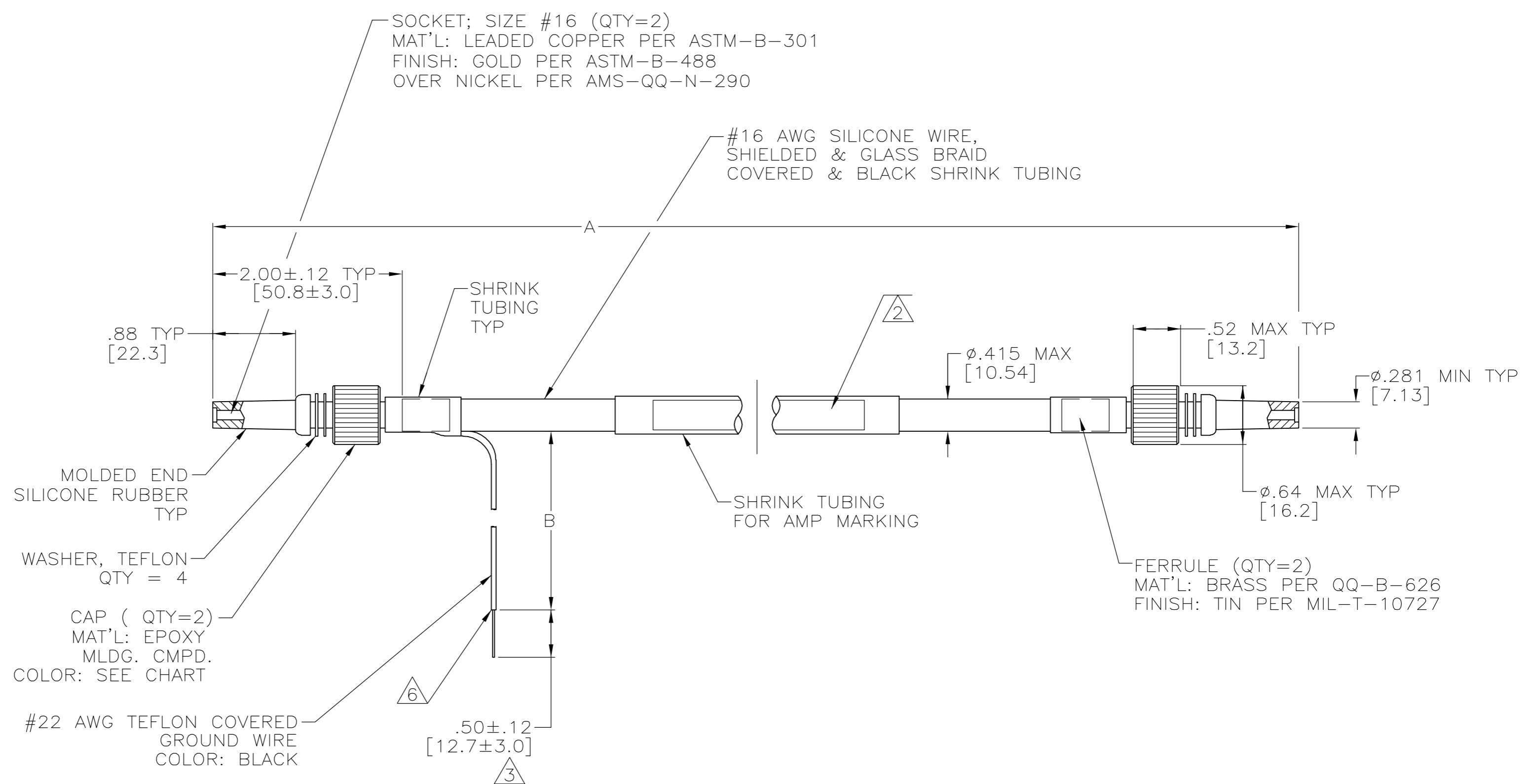


THIS DRAWING IS UNPUBLISHED.		RELEASED FOR PUBLICATION		- N/A -	
© COPYRIGHT N/A BY TYCO ELECTRONICS CORPORATION.		ALL RIGHTS RESERVED.			
PART NO.	A <sup>1</sup>	B <sup>1</sup>	CAP COLOR	REMARKS	
447391-1	19.00 [482.6]	6.00 [152.4]	GREEN	<sup>3</sup>	
447391-2	27.00 [685.8]	6.00 [152.4]	GREEN	<sup>3</sup>	
447391-3	35.00 [889.0]	6.00 [152.4]	GREEN	<sup>3</sup>	
447391-4	42.00 [1066.8]	6.00 [152.4]	GREEN	<sup>3</sup>	
447391-5	51.00 [1295.4]	6.00 [152.4]	GREEN	<sup>3</sup>	
447391-6	59.00 [1498.6]	6.00 [152.4]	GREEN	<sup>3</sup>	
447391-7	67.00 [1701.8]	6.00 [152.4]	GREEN	<sup>3</sup>	
5-447391-1	19.00 [482.6]	6.00 [152.4]	GREEN	<sup>6</sup>	
5-447391-2	27.00 [685.8]	6.00 [152.4]	GREEN	<sup>6</sup>	
5-447391-3	35.00 [889.0]	6.00 [152.4]	GREEN	<sup>6</sup>	
5-447391-4	42.00 [1066.8]	6.00 [152.4]	GREEN	<sup>6</sup>	
5-447391-5	51.00 [1295.4]	6.00 [152.4]	GREEN	<sup>6</sup>	
5-447391-6	59.00 [1498.6]	6.00 [152.4]	GREEN	<sup>6</sup>	
5-447391-7	67.00 [1701.8]	6.00 [152.4]	GREEN	<sup>6</sup>	

LOC	DIST	REVISIONS					
DF	S0	P	LTR	DESCRIPTION	DATE	DWN	APVD
		F		REV PER ECO-05-002357	08-05	AA	DE

- <sup>1</sup> TOLERANCE OF LEAD LENGTH:  
UP TO 24 INCHES [609.6] = ±.12 [±3.0]  
24 INCHES [609.6] & UP = ±1%
- <sup>2</sup> MARKED PER MIL-STD-130.
- <sup>3</sup> PIGTAIL IS SOLDER DIPPED.
- 4. TO MATE WITH AMP LGH-1  
RECEPTACLE WITH .88 [22.3] BARREL DEPTH.
- 5. OPERATING VOLTAGE: 20 KVDC AT 0 TO 70,000 FEET,  
-55°C TO 125°C.
- <sup>6</sup> INSULATION CUT, BUT NOT REMOVED.



THIS DRAWING IS A CONTROLLED DOCUMENT.		DWN	T.SHUEY	24-SEP-90	 Tyco Electronics Corporation Harrisburg, Pa 17105-3608
DIMENSIONS:		CHK	D.EABY	25-SEP-90	
INCHES [mm]		APVD	D.EABY	25-SEP-90	
		PRODUCT SPEC			
TOLERANCES UNLESS OTHERWISE SPECIFIED:		APPLICATION SPEC			
0 PLC ± -		WEIGHT	-		
1 PLC ± -		SCALE	1:1		
2 PLC ± .02 [0.5]		SHEET	1 OF 1		
3 PLC ± -		REV	F		
4 PLC ± -		MATERIAL SEE CALLOUTS      FINISH SEE CALLOUTS      CUSTOMER DRAWING			
ANGLES ± -		SIZE A2    CAGE CODE 00779    DRAWING NO C=447391    RESTRICTED TO -			