

PART NUMBER	REV	TERMINATOR	FEED TYPE	DESCRIPTION
1530132-1	A	LEADMAKER	MECH POST FEED	CUTS CARRIER
1530132-2	A	BENCH	MECH PRE FEED	CUTS CARRIER
1530132-6	A	LEADMAKER	MECH POST FEED	CONTINUOUS CARRIER
7-1530132-1	A	LEADMAKER	MECH POST FEED	-1 AND SPARE PARTS
7-1530132-2	A	BENCH	MECH PRE FEED	-2 AND SPARE PARTS
7-1530132-6	A	LEADMAKER	MECH POST FEED	-6 AND SPARE PARTS
7-1530132-7	A	-	-	SPARE PARTS KIT

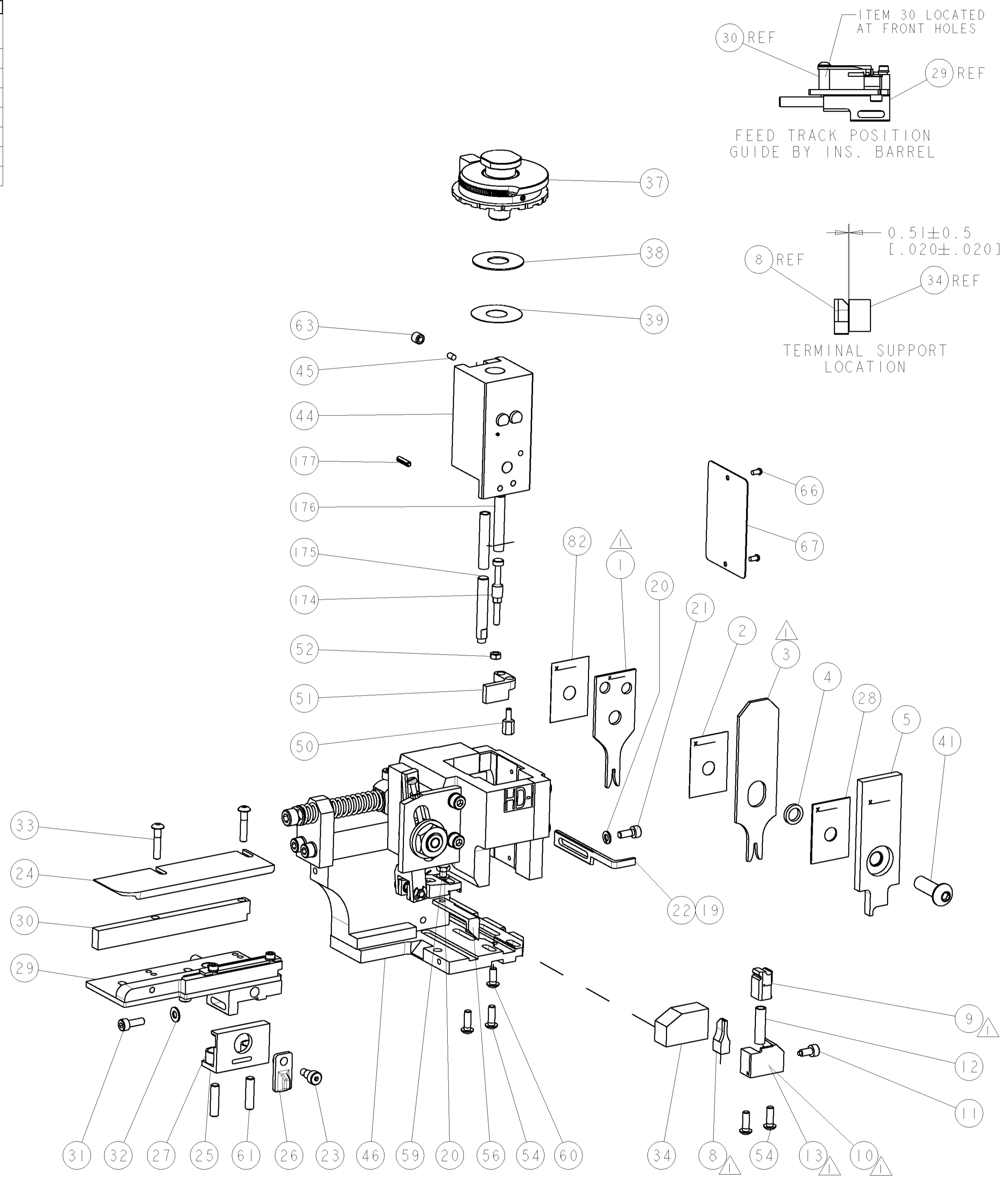
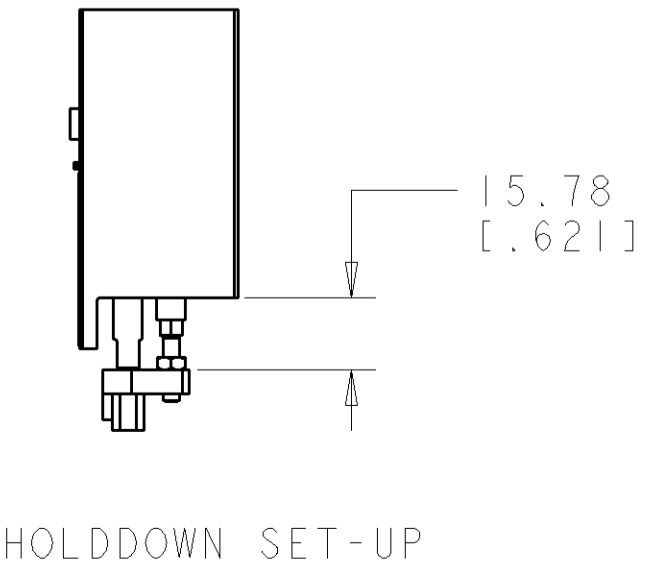
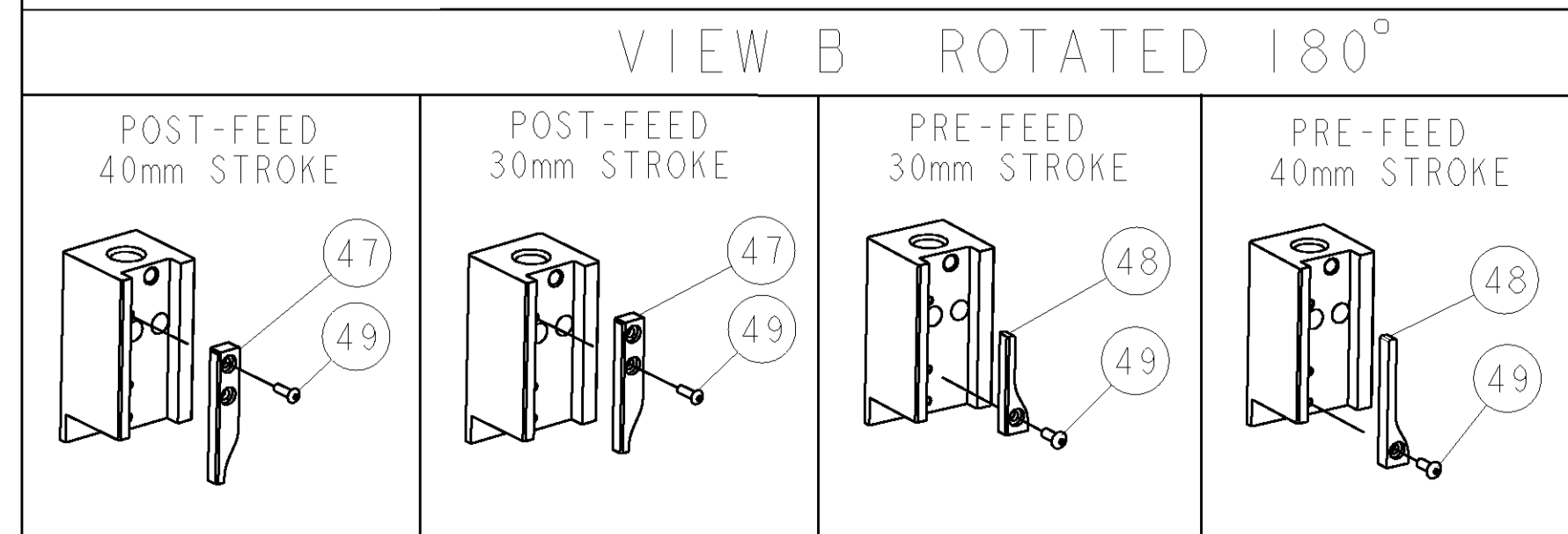
CRIMP	SIZE	TYPE	RANGE
WIRE	1.58 [1.062 IN]	F	18-22 AWG
INSUL	2.03 [1.080 IN]	F	Ø1.3-3.1mm [0.051-.122 IN]
WIRE STRIP LENGTH	2.00-3.00 [1.078-.118 IN]		APPL INSTRUCTIONS 408-8322 & 408-8490
TERMINAL APPL SPEC	NONE		FEED [1.00 [1.433 IN]

TE PN	M.F.R. PN		
1949985	CP-01100104	-	-
-	-	-	-
-	-	-	-
-	-	-	-

WIRE SIZE	CRIMP HEIGHT	REF SETTING
0.82mm ² (18AWG)	1.12 ± 0.05 [1.044 ± .002 IN]	A9
0.51mm ² (20AWG)	.94 ± 0.05 [1.037 ± .002 IN]	C1
0.32mm ² (22AWG)	.86 ± 0.05 [1.034 ± .002 IN]	C8
-	-	-
-	-	-
-	-	-
-	-	-
-	-	-
-	-	-

- △ RECOMMENDED SPARE PARTS.
- GREASE RAM, CAM, CAM FOLLOWER AND FEED ROD LIGHTLY.
 - CERTAIN TERMINALS REQUIRE LUBRICATION. REFER TO THE APPLICATOR INSTRUCTION SHEET FOR MORE INFORMATION.
 - LUBRICATE DAILY PER THE APPLICATOR INSTRUCTION SHEET SUPPLIED WITH THE APPLICATOR.

*** WARNING**
ON INSTALLATION, SET WIRE DISC TO LARGEST WIRE SIZE SETTING. USE OF SETTINGS BELOW MIN. REQUIRED CRIMP HEIGHT SETTING WILL CAUSE DAMAGE TO CRIMP TOOLING.



SET UP GAGE 458637-3		LOC	DIST	REVISIONS			
A	66			REV	DATE	BY	APPV
				A	RELEASED	01JUL2009	LG TE

QTY	REV	DESCRIPTION	DATE	BY	APPV			
1	1	1	1	1	1	993111-8	PIN, SLOTTED SPRING 3.0 X 12.0	177
2	2	2	2	2	2	3-22280-7	SPRING, COMPRESSION	176
1	1	1	1	1	1	1752353-1	GUIDE PIN, HOLDDOWN	175
1	1	1	1	1	1	1901680-1	GUIDE PIN, HOLDDOWN	174
1	1	1	1	1	1	455888-1	SPACER, CRIMPER	82
1	1	1	1	1	1	1338705-3	DOCUMENTATION PACKAGE	71
1	1	1	1	1	1	461264-5	PLATE, IDENTIFICATION	67
2	2	2	2	2	2	21017-2	SCREW, DRIVE	66
1	1	1	1	1	1	3-18031-0	SCR, SET, CUP POINT M6 X 6.0	63
2	2	2	2	2	2	2-18032-5	SCR, SET, FLT POINT M5 X 20.0	61
1	1	1	1	1	1	18024-7	SCR, BTN SKT HD CAP (M4 X 10.0)	60
1	1	1	1	1	1	5-18022-2	SCR, HEX HD CAP M4 X 8.0	59
1	1	1	1	1	1	1338685-1	PAWL, FEED	56
4	4	4	4	4	4	18024-8	SCR, BTN SKT HD CAP (M4 X 12.0)	54
1	1	1	1	1	1	1-18030-0	NUT, HEX, REG M3.5	52
1	1	1	1	1	1	1901681-1	HOLDDOWN, TERMINAL	51
1	1	1	1	1	1	1-1752354-7	STANDOFF, HOLD-DOWN	50
1	1	1	1	1	1	18024-3	SCR, BTN SKT HD CAP (M3 X 10.0)	49
1	1	1	1	1	1	1338675-1	CAM, UNIVERSAL PRE FEED	48
1	1	1	1	1	1	1338676-1	CAM, UNIVERSAL POST-FEED	47
1	1	1	1	1	1	1320999-3	APPLICATOR SUBASSEMBLY, HDI	46
1	1	1	1	1	1	690191-1	PLUG, NYLON	45
1	1	1	1	1	1	1633724-5	RAM, (SIDE FEED)	44
1	1	1	1	1	1	2-18024-6	SCR, BTN SKT HD CAP (M8 X 25.0)	41
1	1	1	1	1	1	690125-1	SHIM SUB-ASSY	39
1	1	1	1	1	1	469367-8	SHIM	38
1	1	1	1	1	1	879103-2	FINE ADJUST HEAD ASSEMBLY	37
1	1	1	1	1	1	1752356-3	SUPPORT, TERMINAL	34
2	2	2	2	2	2	1-18024-0	SCR, BTN SKT HD CAP (M4 X 20.0)	33
1	1	1	1	1	1	18027-2	WASHER, FLAT, REG M4	32
1	1	1	1	1	1	1-18023-2	SCR, SKT HD CAP M4 X 12.0	31
1	1	1	1	1	1	1-1320908-5	SPACER, STRIP GUIDE	30
1	1	1	1	1	1	1633073-1	STRIP GUIDE ASSEMBLY	29
1	1	1	1	1	1	455888-8	SPACER, CRIMPER	28
2	2	2	2	2	2	1-22284-0	SPRING, COMPRESSION	27
1	1	1	1	1	1	356835-1	LEVER, DRAG RELEASE	26
1	1	1	1	1	1	240792-1	DRAG, TERMINAL	25
1	1	1	1	1	1	1320928-1	PLATE, STRIP GUIDE	24
1	1	1	1	1	1	980371-4	SCR, SKT HD SHLDR 5.0 DIA X 6.0	23
1	1	1	1	1	1	690472-2	STRIPPER	22
1	1	1	1	1	1	1-18023-1	SCR, SKT HD CAP M4 X 10.0	21
2	2	2	2	2	2	18025-2	WASHER, SPRG LOCK, REG M4	20
1	1	1	1	1	1	690472-1	STRIPPER	19
1	1	1	1	1	1	1338684-1	SHEAR HOLDER, FRONT	13
1	1	1	1	1	1	3-22280-3	SPRING, COMPRESSION	12
1	1	1	1	1	1	356885-4	STOP, SHEAR	11
1	1	1	1	1	1	1320921-1	SHEAR HOLDER, FRONT, CUT	10
1	1	1	1	1	1	462006-1	FLOATING SHEAR, FRONT	9
1	2	2	2	1	1	4-1633703-1	ANVIL, COMBINATION	8
-	-	-	-	-	-	-	-	7
-	-	-	-	-	-	-	-	6
1	1	1	1	1	1	2-455889-0	DEPRESSOR, SHEAR	5
1	1	1	1	1	1	238011-5	BLOCK, CRIMPER SPACER	4
1	2	2	2	1	1	5-456134-4	CRIMPER, INSULATION F PREMIUM	3
1	1	1	1	1	1	455888-2	SPACER, CRIMPER	2
1	2	2	2	1	1	4-456403-2	CRIMPER, WIRE PREMIUM	1

QTY	REV	DESCRIPTION	ITEM NO						
-77	-76	-72	-71	-6	-2	-1	PART NO	DESCRIPTION	ITEM NO

APPROVED	DATE	BY	APPV
DL ZHANG	03JUN2009	S. ZOU	03JUN2009

DIMENSIONS:	TOLERANCES UNLESS OTHERWISE SPECIFIED:
mm [IN]	0 PLC ±
	1 PLC ±
	2 PLC ±
	3 PLC ±
	4 PLC ±
	ANGLES ±

MATERIAL	FINISH	WEIGHT	SCALE	SHEET	OF	REV
-	-	-	3:5	1	1	A

CUSTOMER DRAWING	SCALE	SHEET	OF	REV
-	3:5	1	1	A