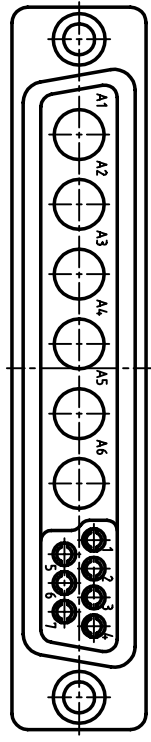
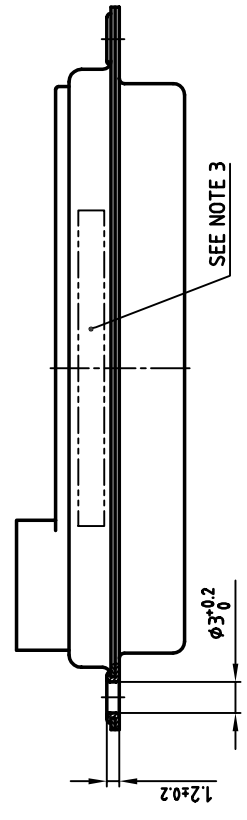
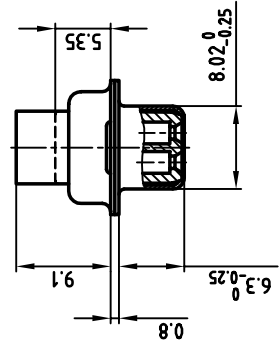
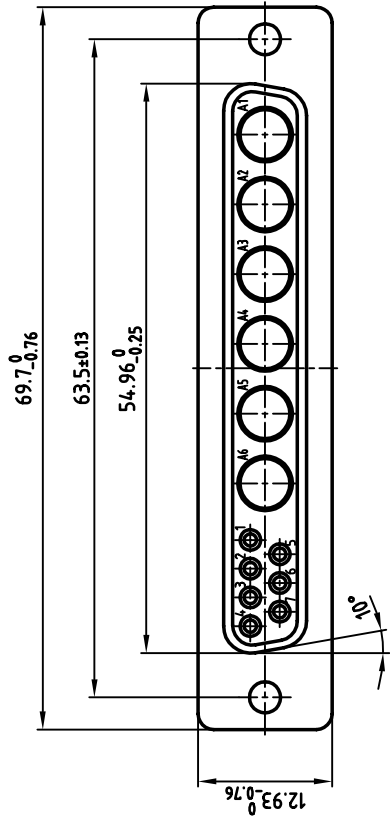


used for: D-SUB COMBINATION CRIMP



Directive 2002/95/EC
"RoHS"
Compliant

- NOTES:**
1. METAL SHELLS: STEEL: TIN PLATED
 2. INSULATORS: PBTP GF UL 94 V-0; BLACK
 3. PRODUCT MARKING: PART-NO. / YEAR / DATE

tolerance		scale: 2:1	
1998		material: SEE NOTES	
drawn	date	title:	
Barcinski	22.06.	D-SUB COMBINATION FEMALE	
appd.	22.06.	CRIMP STYLE 13W6S	
norm	DIN 41652	dwg no: 13K11H3A	
4-old		[CAD/ REL.13] DIN-A	
rev. description		sh: 1/1	
date		product no: 3013W6SXX99A10X	
name			

THIS DRAWING MAY NOT BE COPIED OR REPRODUCED IN ANY WAY, AND MAY NOT BE PASSED ON TO A THIRD PARTY WITHOUT WRITTEN PERMISSION.
OWNERSHIP AND COPYRIGHT OF CONEC GMBH
DO NOT ALTER CAD DRAWING BY HAND

