

PLASTIC PUSH PULL PLUG CONFIGURATOR :

PL	A	1	X	X	X	X	X	X	X
----	---	---	---	---	---	---	---	---	---

Plastic Latch

A1=Straight Plug with cable collet
----SOLDER CONTACT

OUTER SHELL MATERIAL:
G=GREY PSU(STANDARD) F=BLACK PEI
B=BLACK PSU P=GREY PEI

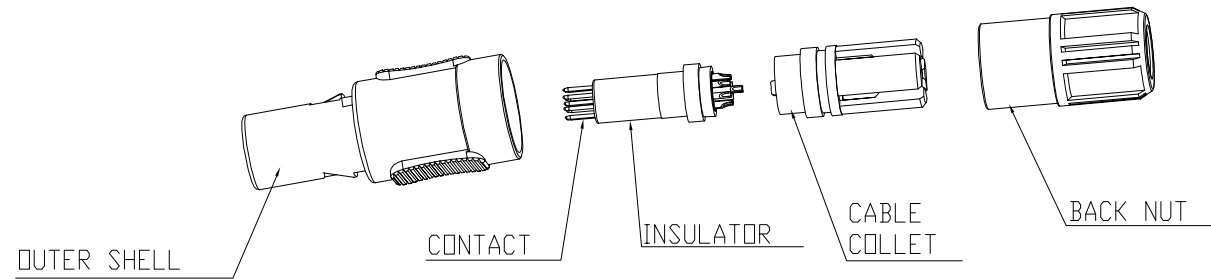
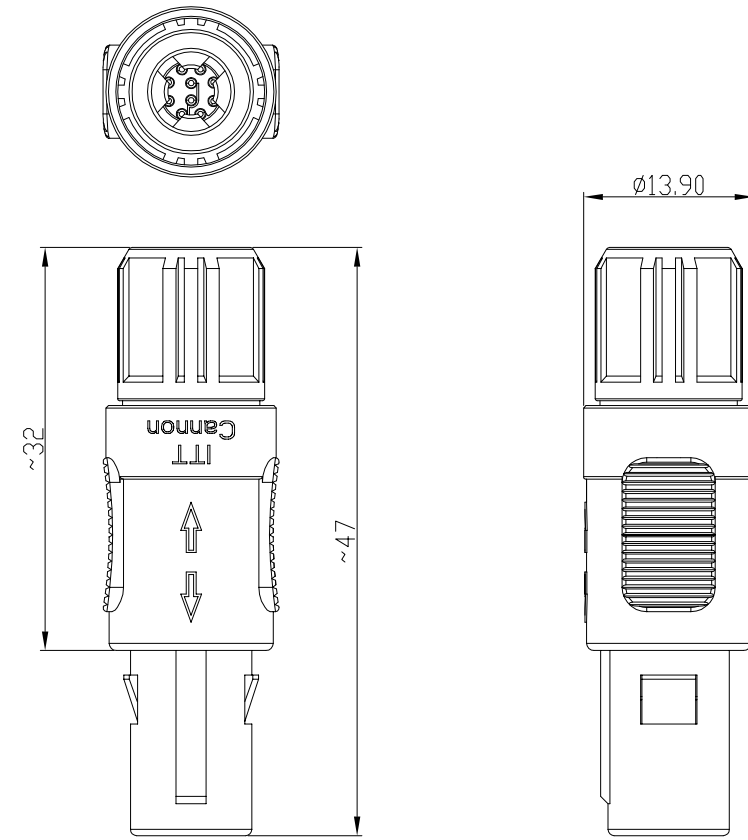
BACK NUT COLOR:
0=BLACK 1=WHITE 2=RED 4=YELLOW
5=GREEN 6=BLUE 8=GREY

CONTACT PLATING
2= GOLD PLATING 20u''

NUMBER OF CONTACTS:
02=2 PIN 04=4 PIN
03=3 PIN 05=5 PIN
06=6 PIN 08=8 PIN
07=7 PIN 09=9 PIN
10=10 PIN 14=14 PIN

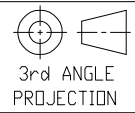

CODING:
0=0°(STANDARD)
A=40° C=60°
E=80° H=170° J=205°

CABLE COLLET:
1= Ø3.9mm (CABLE Ø=2.7~3.9mm)
2= Ø5.2mm (CABLE Ø=4.0~5.2mm)
3= Ø6.5mm (CABLE Ø=5.3~6.5mm)



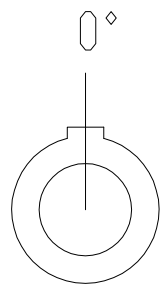
NOTES :

- MATERIAL
OUTER SHELL : HIGH TEMPERATURE PLASTIC,UL94V-0
INSERT : HIGH TEMPERATURE PLASTIC,UL94V-0
CONTACT : COPPER ALLOY
CABLE COLLET : HIGH TEMPERATURE PLASTIC,UL94V-0
BACK NUT : HIGH TEMPERATURE PLASTIC,UL94V-0
- NUMBER OF CONTACT : 2 TO 14 POSITION
- ALL DIMENSIONS ARE IN MILLIMETERS.
- ROHS DIRECTIVE COMPLIANCE

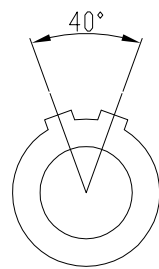
DO NOT SCALE			Total Volume =	Total Surface Area =	PDM:	A3/B
Drawn	DANIEL	08-May-15	Material: NOTE 1	 3rd ANGLE PROJECTION Surface Roughness Unless Specified	 ITT Industries Cannon Electronics (SZ) Co. Ltd. Toupandun Industrial Area, Jinda Cheng, Xiner Village, Sha Jing Town, Baoan District, Shenzhen City PRC 518125	Pro/E Generic Model
Checked	HEROD	08-May-15				Treatment:
Engineer.	DANIEL	08-May-15	Dimensions in:	Ref:	Drwg. No.	CU-132039
Manufact.				Cust Spec No:	Scale 2:1	Sheet 1 of 2
Assembly						iss/rev A
Quality						
Approvals	Sign	Date				
A	INITIAL ISSUE	08-May-15	This is issued in strict confidence on condition that it is not used as a basis for manufacture or sale and that it is not copied reprinted or disclosed to a third party either wholly or in part without the prior written consent of ITT Industries. C.08-May-15			
Rev	DCN/ECN or Description	Date				

VIEW FROM TERMINATION SIDE MALE PART										
	POSITIONS	2 PIN	3 PIN	4 PIN	5 PIN	6 PIN	7 PIN	8 PIN	9 PIN	10 PIN

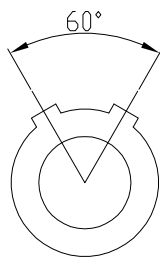
CODING (PLUG FRONT VIEW):



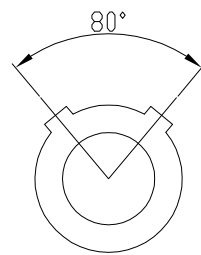
0



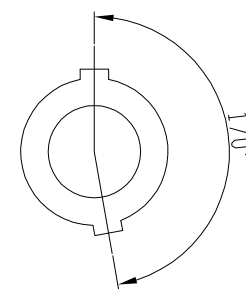
A



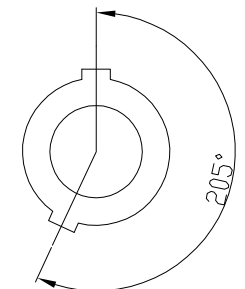
C



E



H



J

DO NOT SCALE			Total Volume =	Total Surface Area =			PDM:	A3/B
Drawn	DANIEL	08-May-15	Material:			Toupandun Industrial Area, Jinda Cheng, Xiner Village, Shajing Town, Baoan District, Shenzhen City PRC 518125	Pro/E Generic Model	
Checked	HEROD	08-May-15					Title	
Engineer	DANIEL	08-May-15	Treatment:		Cannon Electronics (SZ) Co. Ltd.	Ref:	Plastic push pull Straight Plug with cable collet	
Manufact.							Title	
Assembly			Dimensions in:	Unless Specified	Cust Spec No:	Scale 2:1	Sheet 2 of 2	Drwg. No.
Quality								CU-132039
Approvals	Sign	Date	This is issued in strict confidence on condition that it is not used as a basis for manufacture or sale and that it is not copied, reprinted or disclosed to a third party either wholly or in part without the prior written consent of ITT Industries. C 08-May-15		Scale 2:1		Sheet 2 of 2	
A	INITIAL ISSUE	08-May-15					Drwg. No. CU-132039	
Iss/Rev	DCN/ECN or Description	Date					iss/rev A	