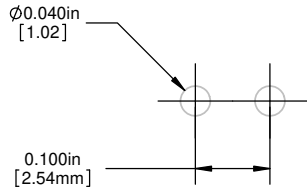


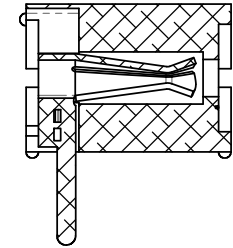
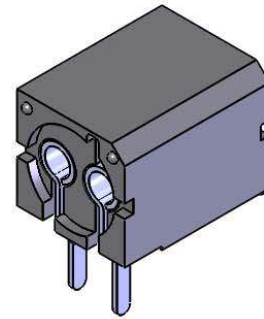
NOTES:

1. ROHS COMPLIANT
2. MATERIAL: HOUSING - NYLON 6/6, U.L. 94-V0 RATING, BLACK (UNLESS OTHERWISE SPECIFIED)
CONTACTS - PHOSPHER BRONZE, TIN PLATED
3. MOUNTING: SPACING ON .250 [6.35mm] CENTERS
4. OPTO: STANDARD VISIBLE, IR LED, OR PHOTO DETECTOR WITH LEADS ON .100" [.25mm] CENTERS
5. LED LEAD DIMENSIONS: MINIMUM .017" [.43mm] ROUND OR SQUARE SHAPE. MAXIMUM .030" [.76mm] THICKNESS - .040" [1.02mm] WIDTH
6. U.S. & FOREIGN PATENTS ISSUED

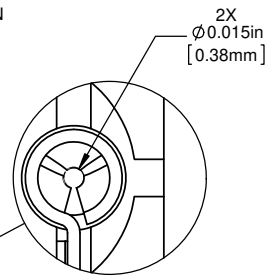
REVISIONS					
ECN #	REV.	DESCRIPTION	DATE	INITIALS	CHK'D
-	001	REVISED PER ECR 111009AZ01	6/20/10	SMU	DZ
410	002	REVISED PER ECR 030712ED01	3/8/12	KH	AZ



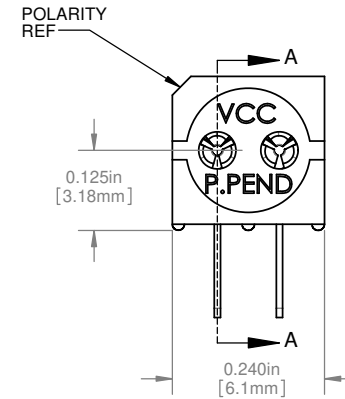
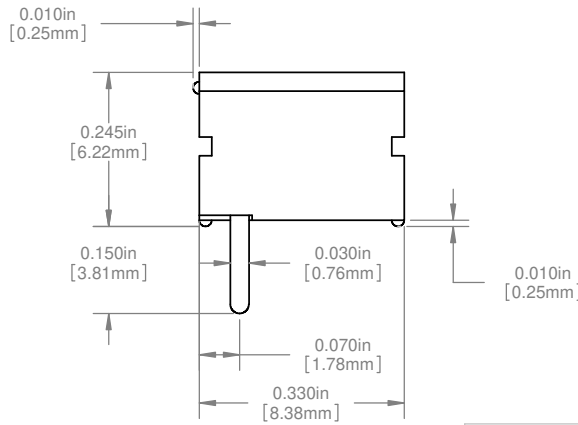
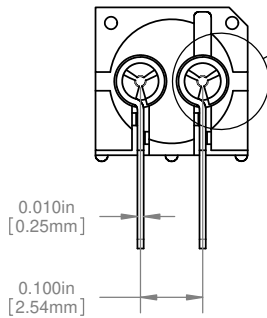
PCB HOLE PATTERN



SECTION A-A



DETAIL H
SCALE 10 : 1



ORDERING CODE: PCH 330

DIMENSION STYLE: INCHES / MM GENERAL TOLERANCES UNLESS OTHERWISE SPECIFIED		APPROVAL		DATE	
INCHES	MM	DRAWN	SMU	6/20/10	
X	± .020	± .508	CHECKED	DZ	6/20/10
XX	± .010	± .254			
XXX	± .005	± .127			
ANGLE ± 1°					
BREAK ALL CORNERS AND SHARP EDGES 90° MAX					
THIRD ANGLE PROJECTION		MATERIAL			
SEE NOTES		SEE NOTES			
FINISH		DO NOT SCALE DRAWING			
SEE NOTES					

APPROVAL		DATE
DRAWN	SMU	6/20/10
CHECKED	DZ	6/20/10
MATERIAL		DATE
SEE NOTES		
FINISH		
SEE NOTES		
DO NOT SCALE DRAWING		

VCC
12780 DANIELSON CT. SUITE A, POWAY, CA 92064 U.S.A.
PHONE: (800) 522-5546 EMAIL: vccsales@vcc-lite.com

TITLE: **P-C-LITE® VERTICAL MOUNT**

SIZE	DWG. NO.	REV
B	PCH 330	002

SCALE: 5:1 SHEET 1 OF 1