

ADD NEW PART
 EC NO: SH2015-0307
 TDRW:GLLI 2014/10/30
 CHKD:
 APPR:AYIN 2015/03/16

QUALITY SYMBOLS	GENERAL TOLERANCES (UNLESS SPECIFIED)	
	mm	INCH
$F_A = 0$	4 PLACES ± ---	± ---
$F_B = 0$	3 PLACES ± ---	± ---
$F_C = 0$	2 PLACES ± 0.15	± ---
	1 PLACE ± 0.25	± ---
	0 PLACE ± ---	± ---

ANGULAR ± 3°
 DRAFT WHERE APPLICABLE
 MUST REMAIN WITHIN DIMENSIONS

DIMENSION STYLE	
MM ONLY	
DRAWN BY	DATE
GLL1	2014/10/30
CHECKED BY	DATE
APPROVED BY	DATE
AYIN	2015/03/16
MATERIAL NO.	
SEE SHEET 2	

SCALE	DESIGN UNITS	THIRD ANGLE PROJECTION
5:1	METRIC	
TITLE		
HIGH SPEED CONNECTOR 1.27MM PITCH VERTICAL SMT SOLDER TAIL		
molex		
DOCUMENT NO.	SHEET NO.	
SD-47306-001	1 OF 2	

THIS DRAWING CONTAINS INFORMATION THAT IS PROPRIETARY TO MOLEX
 INCORPORATED AND SHOULD NOT BE USED WITHOUT WRITTEN PERMISSION

10 9 8 7 6 5 4 3 2 1

NOTES:

1. MATERIAL:

HOUSING: HIGH TEMPERATURE THERMAL PLASTIC, GLASS FILLED,
UL94V-0, COLOR: BLACK

TERMINAL: BRASS

POST: BRASS

2. TERMINAL PLATING:

CONTACT AREA: (a) GOLD FLASH

(b) GOLD, THICKNESS=0.76 MICRON MINIMUM

(c) GOLD, THICKNESS=0.38 MICRON MINIMUM

SOLDER TAIL: TIN, THICKNESS=1.27 MICRON MINIMUM

UNDER PLATE: NICKEL, THICKNESS=1.27 MICRON MINIMUM

3. POST PLATING: UNDER PLATE: NICKEL, THICKNESS=1.25 MICRON MINIMUM

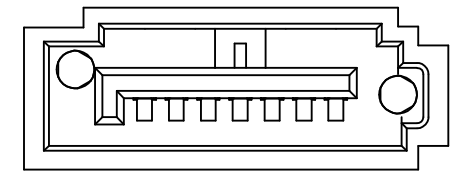
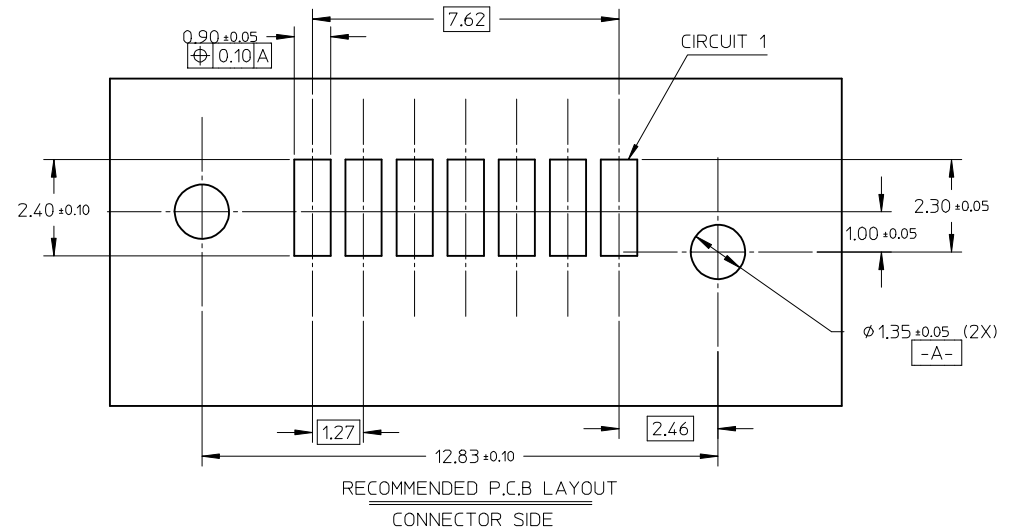
TIN, THICKNESS=1.9 MICRON MINIMUM OVER ALL

4. PACKAGING: TAPE REEL

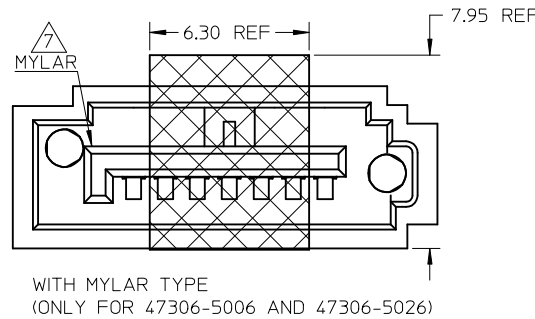
5. PRODUCT SPECIFICATION REFER TO PS-67491-001

6. RECOMMENDED SOLDERING PROCESS: IR PROCESS

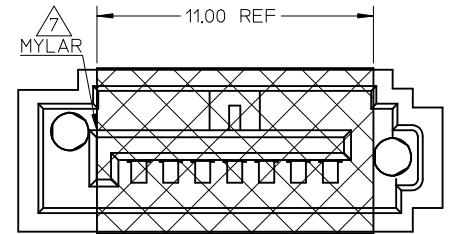
7. THE MYLAR STICKED ON THE HOUSING IS JUST USED FOR PICK-UP PLACE.
PLEASE REMOVE IT AFTER REFLOW



WITHOUT MYLAR TYPE



WITH MYLAR TYPE
(ONLY FOR 47306-5006 AND 47306-5026)

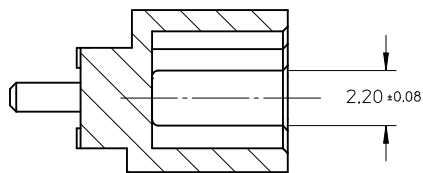
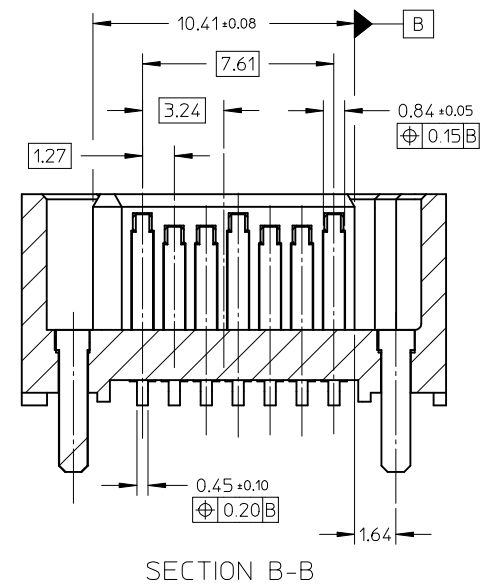
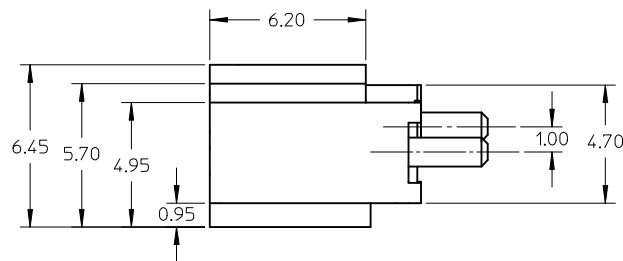
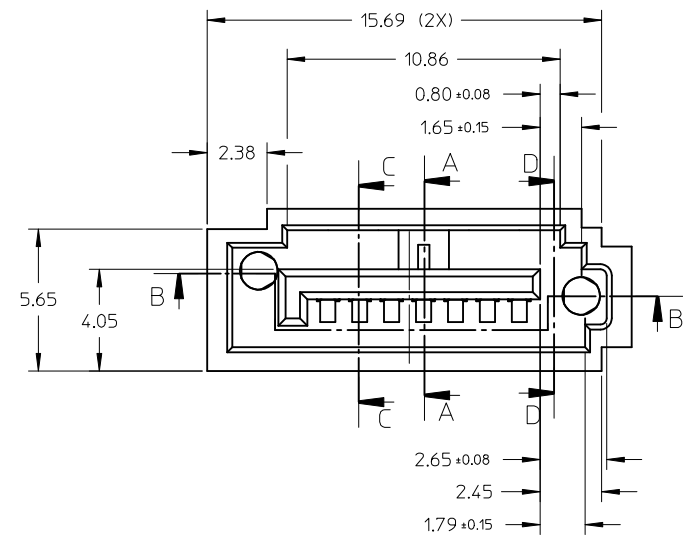
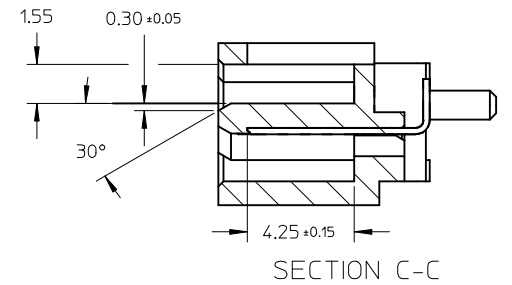
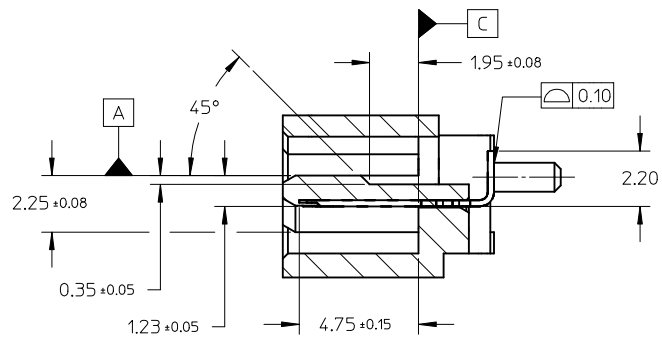
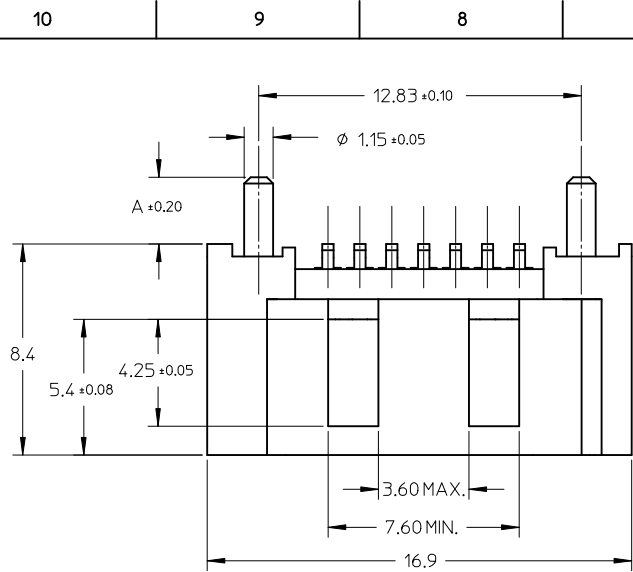


WITH MYLAR TYPE

473065033	SEE NOTE2(b)	2.65	WITH	PK-47306-001	NATURAL
473065013	SEE NOTE2(b)	2.65	WITH	PK-47306-001	BLUE
473062105	SEE NOTE2(c)	2.65	WITHOUT	PK-47306-002	
473062102	SEE NOTE2(b)				
473062101	SEE NOTE2(a)	3.45	WITH	PK-47306-001	BLACK
473065026	SEE NOTE2(c)				
473065025	SEE NOTE2(c)				
473065022	SEE NOTE2(b)				
473065021	SEE NOTE2(a)				
473065015	SEE NOTE2(c)	3.05	WITH	PK-47306-001	BLACK
473065012	SEE NOTE2(b)				
473065011	SEE NOTE2(a)	2.65	WITHOUT	PK-47306-001	BLACK
473065005	SEE NOTE2(c)				
473065006	SEE NOTE2(c)				
473065002	SEE NOTE2(b)				
473065001	SEE NOTE2(a)				
473062025	SEE NOTE2(c)	3.45	WITHOUT	PK-47306-001	BLACK
473062022	SEE NOTE2(b)				
473062021	SEE NOTE2(a)				
473062015	SEE NOTE2(c)	3.05	WITHOUT	PK-47306-001	BLACK
473062012	SEE NOTE2(b)				
473062011	SEE NOTE2(a)	2.65	WITHOUT	PK-47306-001	BLACK
473062005	SEE NOTE2(c)				
473062002	SEE NOTE2(b)				
473062001	SEE NOTE2(a)				
MATERIAL NO	PLATING TYPE	DIM A	MYLAR		

SEE SHEET 1 EC NO: SH2015-0307 DRAWING: 2014/10/30 CHKD: APPR: AYIN 2015/03/16	QUALITY SYMBOLS F=0 F=0 F=0	GENERAL TOLERANCES (UNLESS SPECIFIED)		DIMENSION STYLE MM ONLY		SCALE 8:1	DESIGN UNITS METRIC	THIRD ANGLE PROJECTION	
		4 PLACES ± --- ± --- 3 PLACES ± --- ± --- 2 PLACES ± 0.15 ± --- 1 PLACE ± 0.25 ± --- 0 PLACE ± --- ± ---	mm INCH	DRAWN BY GLLI	DATE 2014/10/30	TITLE HIGH SPEED CONNECTOR 1.27MM PITCH VERTICAL SMT SOLDER TAIL			
		ANGULAR ± 3 °		APPROVED BY AYIN	DATE 2015/03/16	molex			
		DRAFT WHERE APPLICABLE MUST REMAIN WITHIN DIMENSIONS		MATERIAL NO. SEE CHART		DOCUMENT NO. SD-47306-001	SHEET NO. 2 OF 2		

9 8 7 6 5 4 3 2 1



SECTION D-D

ADD PART NUMBER EC NO: SH2010-0232 DRWN: XJ SONG CHKD: XJ SONG APPR: RZHANG	REV 2010/01/07 2010/01/11 2010/01/14	DESCRIPTION QUALITY SYMBOLS ▽=0 ◻=0	GENERAL TOLERANCES (UNLESS SPECIFIED)		DIMENSION STYLE MM ONLY	SCALE 5:1	DESIGN UNITS METRIC	THIRD ANGLE PROJECTION			
			4 PLACES ± --- ± --- 3 PLACES ± --- ± --- 2 PLACES ± 0.15 ± --- 1 PLACE ± 0.25 ± ---	mm INCH ± --- ± --- ± 0.15 ± --- ± 0.25 ± ---	DRAWN BY JENNY	DATE 2005/07/22	TITLE HIGH SPEED CONNECTOR 1.27MM PITCH VERTICAL SMT SOLDER TAIL				
			ANGULAR ± 1°		CHECKED BY GRMA	DATE 2005/07/22	MOLEX INCORPORATED				
			DRAFT WHERE APPLICABLE MUST REMAIN WITHIN DIMENSIONS		APPROVED BY YAP	DATE 2005/07/22	MATERIAL NO. SEE SHEET 2	DOCUMENT NO. SD-47306-001	SHEET NO. 1 OF 2		

10 9 8 7 6 5 4 3 2 1

NOTES:

1. MATERIAL:

HOUSING: HIGH TEMPERATURE THERMAL PLASTIC, GLASS FILLED,
UL94V-0, COLOR: BLACK

TERMINAL: BRASS

POST: BRASS

2. TERMINAL PLATING:

CONTACT AREA: (a) GOLD FLASH

(b) GOLD, THICKNESS=0.76 MICRON MINIMUM

(c) GOLD, THICKNESS=0.38 MICRON MINIMUM

SOLDER TAIL: TIN, THICKNESS=1.27 MICRON MINIMUM

UNDER PLATE: NICKEL, THICKNESS=1.27 MICRON MINIMUM

3. POST PLATING: UNDER PLATE: NICKEL, THICKNESS=1.25 MICRON MINIMUM

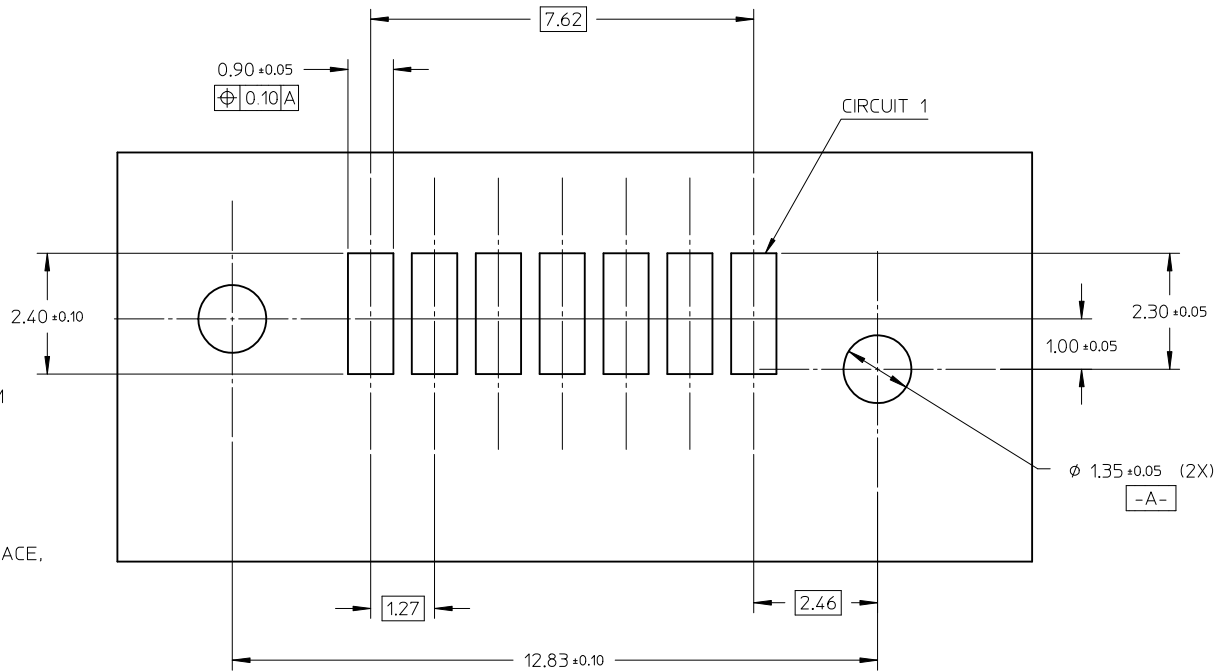
TIN, THICKNESS=1.9 MICRON MINIMUM OVER ALL

4. PACKAGING: TAPE REEL

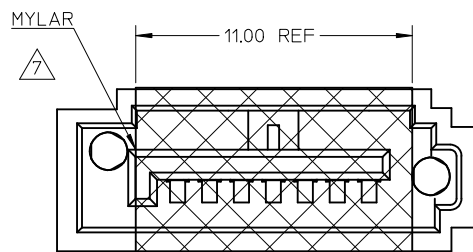
5. PRODUCT SPECIFICATION REFER TO PS-67491-001

6. RECOMMENDED SOLDERING PROCESS: IR PROCESS

7. THE MYLAR STICKED ON THE HOUSING IS JUST USED FOR PICK-UP PLACE,
PLEASE REMOVE IT AFTER REFLOW

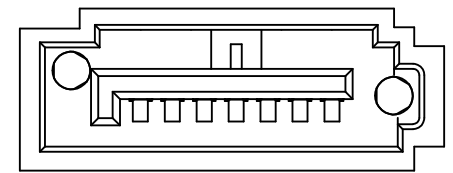


473062105	SEE NOTE2(c)	2.65	WITHOUT	PK-47306-002
473062102	SEE NOTE2(b)			
473062101	SEE NOTE2(a)			
473065025	SEE NOTE2(c)	3.45	WITH	PK-47306-001
473065022	SEE NOTE2(b)			
473065021	SEE NOTE2(a)			
473065015	SEE NOTE2(c)			
473065012	SEE NOTE2(b)			
473065011	SEE NOTE2(a)	3.05	WITH	PK-47306-001
473065005	SEE NOTE2(c)			
473065002	SEE NOTE2(b)	2.65	WITH	PK-47306-001
473065001	SEE NOTE2(a)			
473062025	SEE NOTE2(c)	3.45	WITHOUT	PK-47306-001
473062022	SEE NOTE2(b)			
473062021	SEE NOTE2(a)			
473062015	SEE NOTE2(c)			
473062012	SEE NOTE2(b)			
473062011	SEE NOTE2(a)	3.05	WITHOUT	PK-47306-001
473062005	SEE NOTE2(c)			
473062002	SEE NOTE2(b)			
473062001	SEE NOTE2(a)	2.65	WITHOUT	PK-47306-001
MATERIAL NO	PLATING TYPE	DIM A	MYLAR	PACKING



WITH MYLAR TYPE

RECOMMENDED P.C.B LAYOUT
CONNECTOR SIDE



WITHOUT MYLAR TYPE

SEE SHEET1 EC NO: SH2010-0232 DRW: XJ.SONG 2010/01/07 CHKD: XJ.SONG 2010/01/11 APPR: RZHANG 2010/01/14	QUALITY SYMBOLS ▽=0 ◻=0	GENERAL TOLERANCES (UNLESS SPECIFIED)		DIMENSION STYLE MM ONLY	SCALE 5:1	DESIGN UNITS METRIC	THIRD ANGLE PROJECTION			
		4 PLACES ± --- ± ---	3 PLACES ± --- ± ---	2 PLACES ± 0.15 ± ---	1 PLACE ± 0.25 ± ---	ANGULAR ± 1°	DRAWN BY JENNY	DATE 2005/07/22	TITLE HIGH SPEED CONNECTOR 1.27MM PITCH VERTICAL SMT SOLDER TAIL	
		DRAFT WHERE APPLICABLE MUST REMAIN WITHIN DIMENSIONS		SIZE A3	THIS DRAWING CONTAINS INFORMATION THAT IS PROPRIETARY TO MOLEX INCORPORATED AND SHOULD NOT BE USED WITHOUT WRITTEN PERMISSION		MOLEX MOLEX INCORPORATED		DOCUMENT NO. SD-47306-001	SHEET NO. 2 OF 2

9 8 7 6 5 4 3 2 1