

1

2

3

4

A

B

C

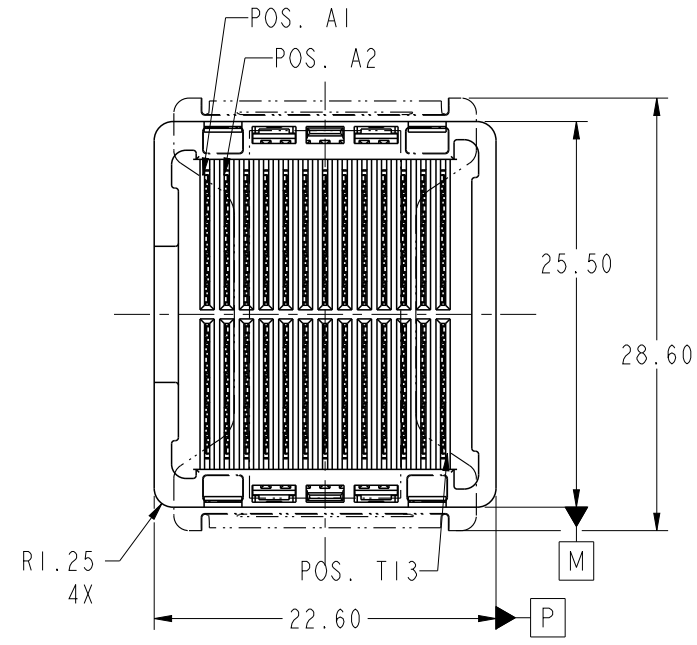
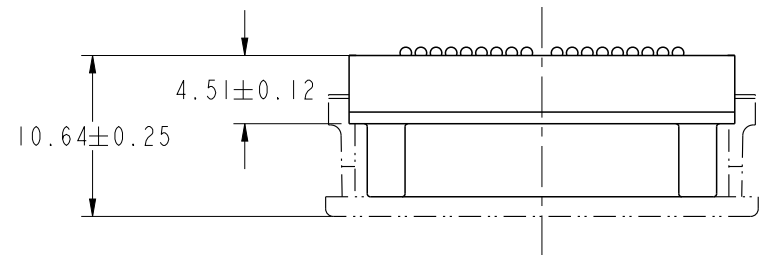
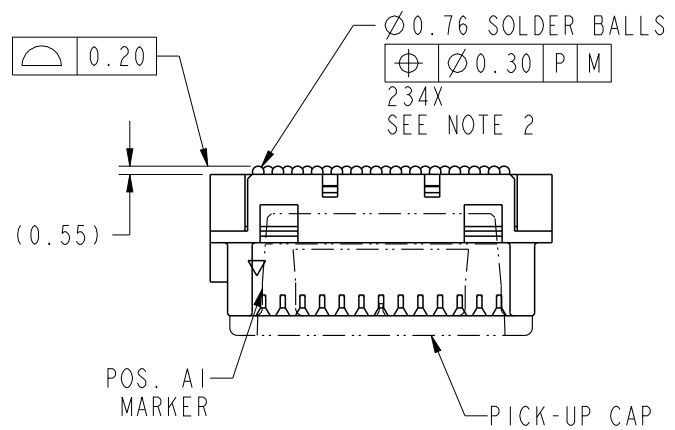
D

A

B

C

D



Copyright FCI.

spec ref			dr	Tao Zhan	2012/11/14	projection 	MM 	size	A4	scale	2:1
tolerance std			eng	Sky Chen	2013/10/17			ecn no	-		
			chr	-	-						
surface <input checked="" type="checkbox"/>			appr	Pei-Ming Zheng	2013/10/17	product family	GIG-Array	rel level	Released		
			linear	0.X	± 0.30	 www.fci.com	title GIG-Array 5mm RECP. ASSY. 104 SIG. POS.	dwg no 10014370	rev A		
	0.XX	± 0.20									
	0.XXX	± 0.10									
angular	0°	$\pm 2^\circ$	cat. no.	Product - Customer Drw			sheet 1 of 4				

PrdE File - REV C - 2009-06-09

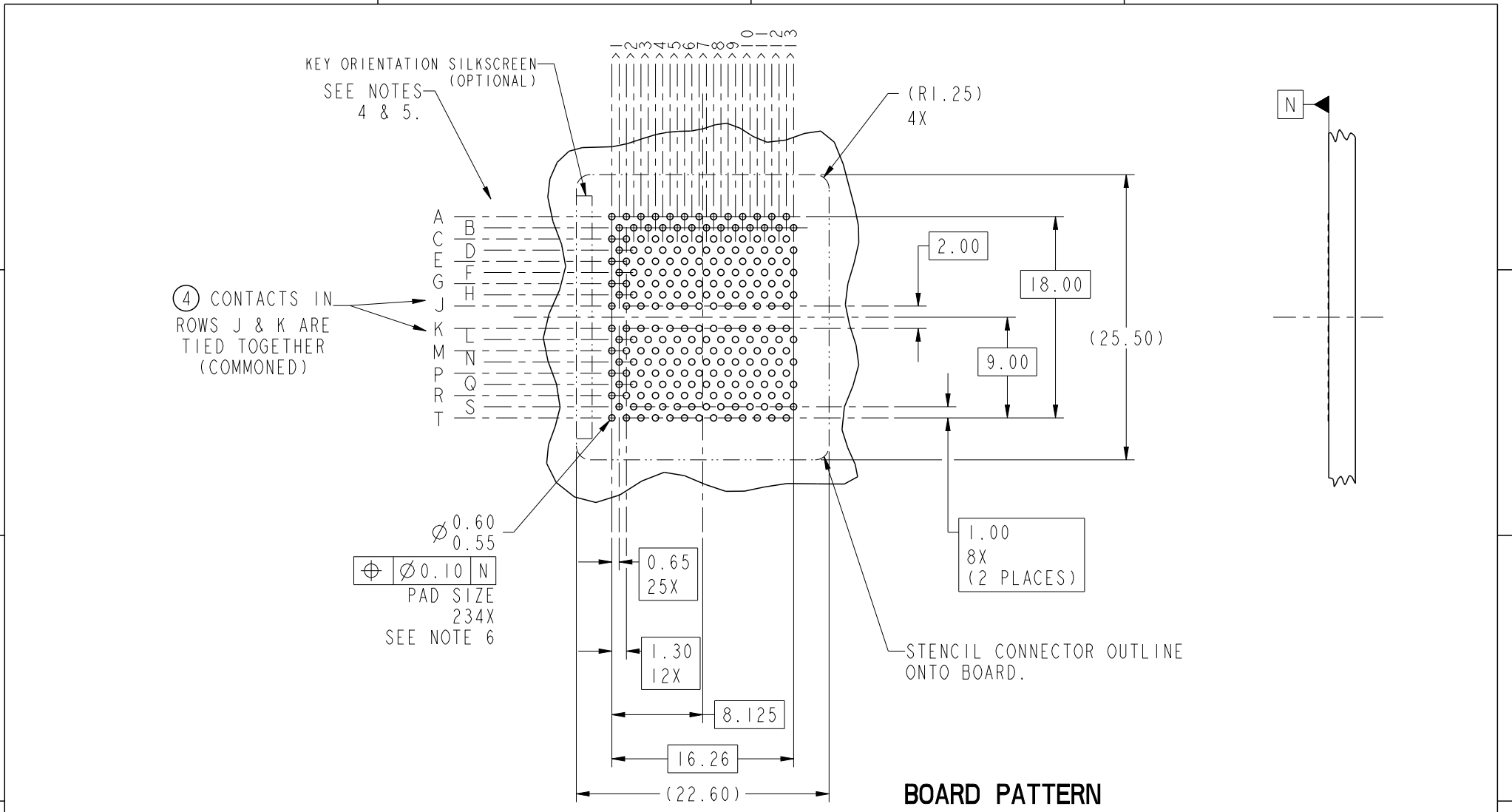
2

3

4



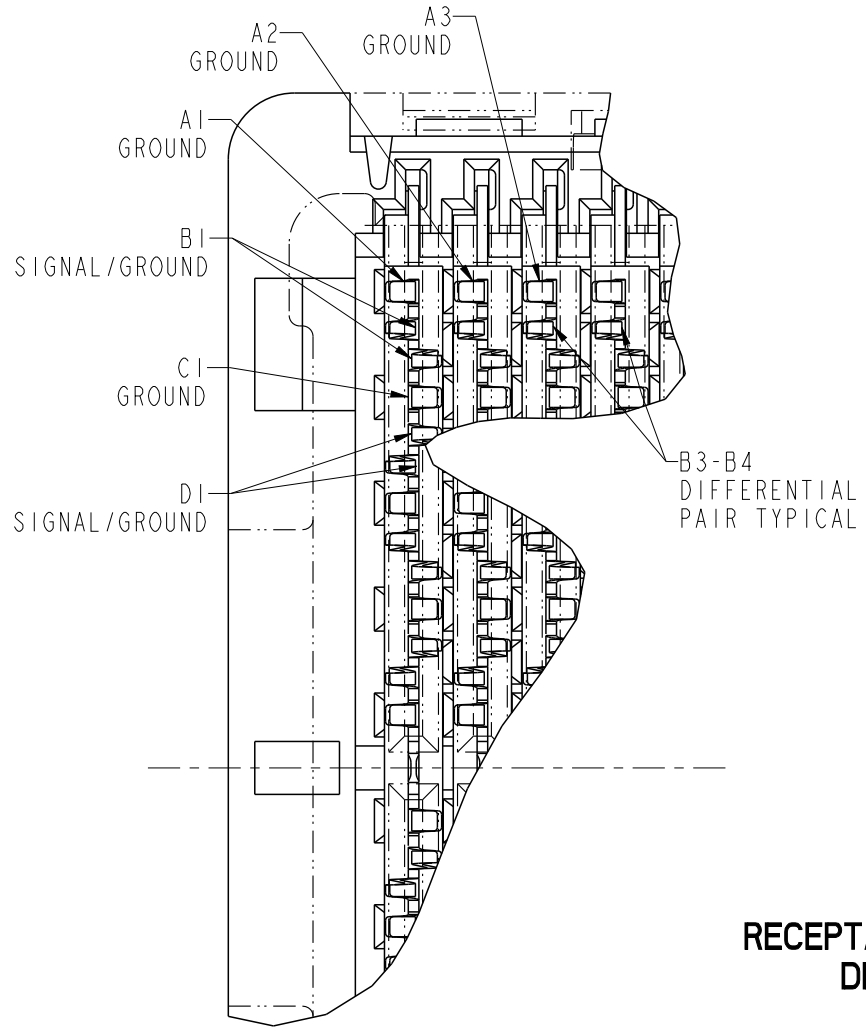
Copyright FCI.



BOARD PATTERN

spec ref			dr	Tao Zhan	2012/11/14	projection 	MM ←→	size	A4	scale	2:1
tolerance std TOLERANCES UNLESS OTHERWISE SPECIFIED			eng	Sky Chen	2013/10/17			ecn no	-		
			chr	-	-						
surface ✓			appr	Pei-Ming Zheng	2013/10/17	product family	GIG-Array		rel level	Released	
			linear	0.X	±0.30	 GIG-Array 5mm RECP. ASSY. 104 SIG. POS. www.fci.com	dwg no	10014370		rev	A
	0.XX	±0.20	cat. no.	Product - Customer Drw			sheet 2 of 4				
angular	0°	±2°									

PrdE File - REV C - 2009-06-09



NOTES:

- ① MATERIAL:
HOUSING: LCP
UL RATING: 94 V-0
CONTACT: COPPER ALLOY
PLATING (CONTACT): Au OVER Ni.
SOLDERBALL: (SEE TABLE) EUTECTIC SnPb OR LEAD FREE 95.5 Sn/4Ag/0.5Cu.
- ② SOLDER BALLS WILL NOT BE PERFECT SPHERICAL SHAPE DUE TO REFLOW ATTACHMENT.
- ③ MATED HEIGHT EFFECTED BY CUSTOMERS' PCB PAD SIZE, PLATING, SOLDER REFLOW PROFILE & SOLDER PASTE.
- ④ CONTACTS IN ROWS A,C,E,G,J,K,M,P,R AND T ARE SINGLE BEAM CONTACTS, TYPICALLY USED AS GROUND PINS. (NOTE: CONTACTS IN ROWS J & K ARE TIED TOGETHER [COMMONED])
- ⑤ CONTACTS IN ROWS B,D,F,H,L,N,Q AND S ARE DUAL BEAM CONTACTS, TYPICALLY USED AS SIGNAL PINS.

RECEPTACLE INTERFACE DESCRIPTION

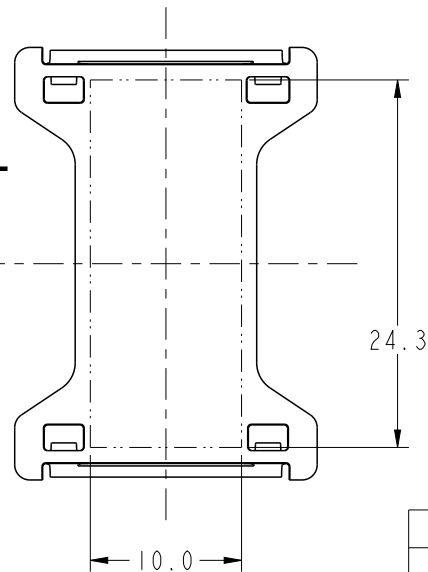


Copyright FCI.

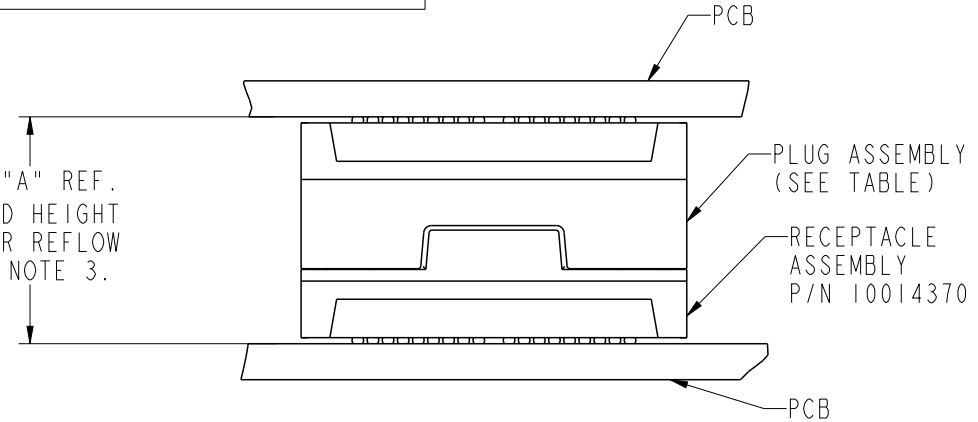
spec ref		dr Tao Zhan		2012/11/14		projection 	MM 	size	A4	scale	7:1
tolerance std		eng Sky Chen		2013/10/17				ecn no		-	
TOLERANCES UNLESS OTHERWISE SPECIFIED		chr -		-				product family		GIG-Array	
surface <input checked="" type="checkbox"/>	linear	0.X	±0.30		title	GIG-Array	dwg no	10014370	rev	A	www.fci.com
		0.XX	±0.20								
		0.XXX	±0.10								
angular	0°	±2°	cat. no.	Product - Customer Drw			sheet 3 of 4				

PRODUCT NUMBER	SOLDER BALL COMPOSITION	CONTACT PLATING PERFORMANCE LEVEL
10014370-001	STAND (EUTECTIC)	PERFORMANCE-BASED PLATING, QUALIFIED TO MEET THE REQUIREMENTS OF FCI PRODUCT SPECIFICATION GS-12-192, INCLUDING TELCORDIA CENTRAL OFFICE
10014370-001LF	LEADFREE	
10014370-201	STAND (EUTECTIC)	Au OVER Ni
10014370-201LF	LEADFREE	

FLAT AREA FOR OPTIONAL PICK-UP CAP
SCALE 2:1



DIM "A" REF. MATED HEIGHT AFTER REFLOW SEE NOTE 3.



END VIEW OF MATED CONNECTORS
SCALE 2:1

DIM "A"	PLUG PART NUMBER
20	10098180
25	10122145

6. SPECIFIED POSITIONAL TOLERANCE DEFINES PAD TO PAD LOCATION WITHIN LAND PATTERN. POSITIONAL TOLERANCE OF LAND PATTERN TO FUDICIAL MARKS OR PCB DATUMS SHALL BE DEFINED BY CUSTOMER. FOR RECOMMENDED PRODUCT APPLICATION AND PCB DESIGN DETAILS, SEE DOC. NO. GS-20-016.

7. FOR PROPER APPLICATION FOLLOW FCI APPLICATION SPECIFICATION GS-20-033. LEAD FREE SOLDER BALLS WILL NOT SOLDER PROPERLY IN A LEADED SOLDER PROCESS DUE TO A HIGHER REFLOW TEMPERATURE. LEADFREE PRODUCT IS THEREFORE NOT BACKWARDS COMPATIBLE WITH LEADED OR SOME SOLDERING APPLICATIONS. REFERENCE FCI APPLICATION SPECIFICATION.

8. THIS PRODUCT MEETS THE EUROPEAN UNION DIRECTIVES AND OTHER COUNTRY REGULATIONS AS DESCRIBED IN GS-22-008. PRODUCT MEETING THIS DIRECTIVE IS IDENTIFIED IN THE CODE NUMBER MARKED ON EACH PART BY HAVING AN "X" IN THE SEVENTH CHARACTER POSTION.

spec ref	dr Tao Zhan 2012/11/14			projection	MM	size A4	scale 2:1
tolerance std	eng Sky Chen 2013/10/17					ecn no -	rel level Released
	chr -						
surface ✓	appr Pei-Ming Zheng 2013/10/17			product family GIG-Array	rev A		
	linear	0.X	±0.30	www.fci.com	cat. no.	Product - Customer Drw	sheet 4 of 4
		0.XX	±0.20				
angular	0°	±2°	title GIG-Array 5mm RECP. ASSY. 104 SIG. POS.		dwg no 10014370		



Copyright FCI.