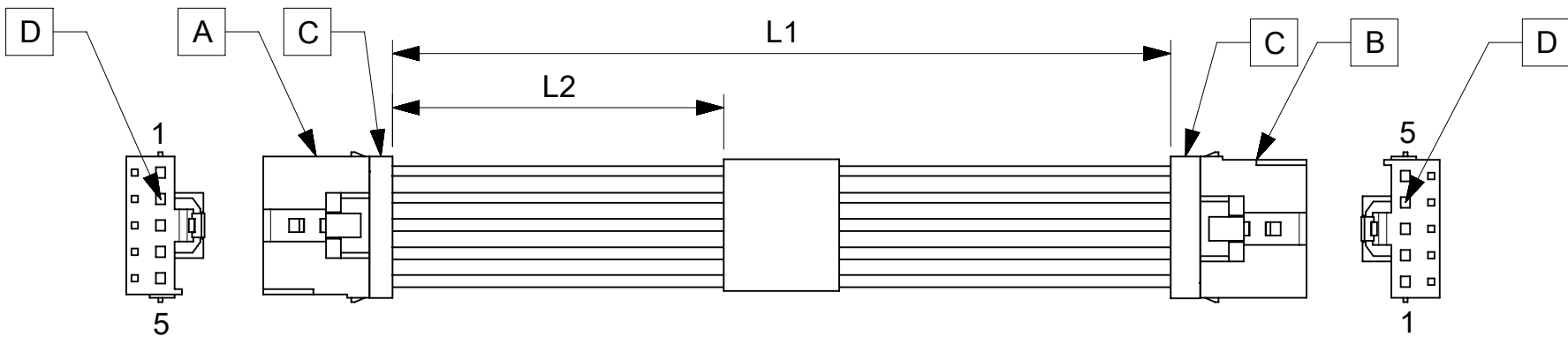


ITEM	MOLEX P/N	DESCRIPTION	QTY	UOM
A,B	2074580005	L1NK 396 Receptacle Housing -1X5	2	PC
C	2074590005	L1NK 396 TPA -1X5	2	PC
D	455703002	KKGen2 156 Tin/nickel Crimp 18-20 FORMED	10	PC
E	-	LABEL	1	PC

FROM	TO	CABLE DESCRIPTION	COLOR
A1	B5	18AWG PVC BK UL1015 HOOKUP WIRE	BLACK
A2	B4		
A3	B3		
A4	B2		
A5	B1		



PART NUMBER	L1	L2	TITLE
369210500	75±5	25REF	Link396 5 Circuit 75MM
369210502	150±10	63REF	Link396 5 Circuit 150MM
369210503	300±15	138REF	Link396 5 Circuit 300MM
369210510	1000±20	488REF	Link396 5 Circuit 1000MM

DATE	REV	DESCRIPTION	REVISED BY
2019.03.27	A	INITIAL RELEASE	SSHIVASHANKA

- NOTES**
1. Cable assembly must pass 100% continuity and polarity test.
 2. Label text must be 2mm max. In height with Arial font.
 3. Connector view shown is from mating side.

P/N:36921XXXX — MOLEX PN
 MOLEX
 BATCH WK/YR

SYMBOLS		THIS DRAWING CONTAINS INFORMATION THAT IS PROPRIETARY TO MOLEX ELECTRONIC TECHNOLOGIES, LLC AND SHOULD NOT BE USED WITHOUT WRITTEN PERMISSION	
▽ = 0	mm	SCALE	NTS
▽ = 0	GENERAL TOLERANCES (UNLESS SPECIFIED)		CURRENT REV DESC:
▽ = 0	ANGULAR TOL ± °		
▽ = 0	4 PLACES	±	EC NO: 616867
▽ = 0	3 PLACES	±	DRWN: SSHIVASHANKA 2019/03/27
▽ = 0	2 PLACES	±	CHK'D: MNARAYAN01 2019/05/08
▽ = 0	1 PLACE	±	APPR: MNARAYAN01 2019/05/08
▽ = 0	0 PLACES	±	INITIAL REVISION:
▽ = 0	DRAFT WHERE APPLICABLE MUST REMAIN WITHIN DIMENSIONS		DRWN: SSHIVASHANKA 2019/03/27
▽ = 0	THIRD ANGLE PROJECTION		APPR: MNARAYAN01 2019/05/08
DRAWING		SERIES	DOCUMENT NUMBER
A4-SIZE		36921	369210500
MATERIAL NUMBER		CUSTOMER	DOC TYPE
SEE TABLE		GENERAL MARKET	PSD
SHEET NUMBER		REVISION	
1 OF 1		A	