

DATA DISPLAY PRODUCTS (DDP) PROPRIETARY INFORMATION. DO NOT REPRODUCE, COPY, OR USE WITHOUT EXPRESS WRITTEN PERMISSION. COPYRIGHT DATA DISPLAY PRODUCTS.

REV.	DATE	BY	DESCRIPTION
1	010711	LC	PRELIMINARY

503199

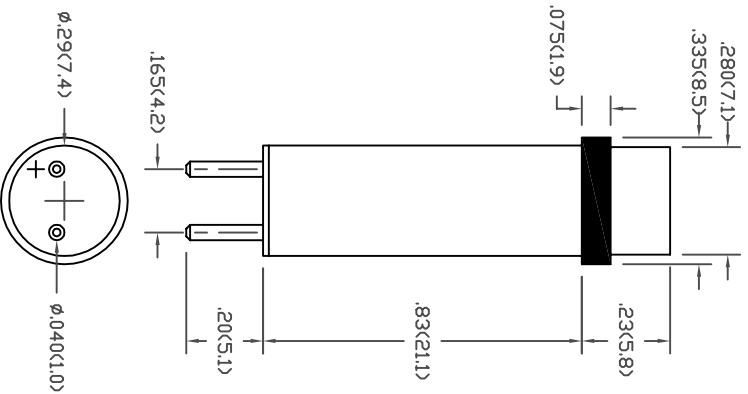
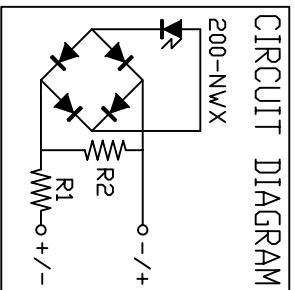
ELECTRO-OPTICAL CHARACTERISTICS @ T_a = 25°C

SYM	PARAMETER	X = LED COLOR					UNIT
		RED	AMBER	GREEN	BLUE	WHITE	
I _v	TYP. LUMINOUS INTENSITY MEASURED W/O LENS @ I _f =20mA	900	1300	1200	325	1100	mcd
V _o	OPERATING VOLTAGE	110	110	110	110	110	VAC
I _f	TYP. FORWARD CURRENT @ V _f =110VAC	5.8 ~ 6.1					mA
I _m	MAX. FORWARD CURRENT @ V _f =130VAC	7.1	7.1	7.1	7.1	7.1	mA
V _{br}	REVERSE BREAKDOWN @ I _r =100uA	-	-	-	-	-	V
λ _{pk}	PEAK WAVELENGTH	635	592	520	465	-	nm
λ _d	DOMINANT WAVELENGTH	626	590	525	470	-	nm

ABSOLUTE MAX. RATINGS T_a=25°C

PARAMETER	VALUE			UNIT
	RED & AMB	G, B & W		
POWER DISSIPATION	923	923		mW
DERATE/°C T _a	13.8	13.8		mW
OPERATING VOLTAGE	130	130		VAC
OPERATING TEMPERATURE	-40<+100	-30<+85		°C
STORAGE TEMPERATURE	-40<+120	-40<+100		°C

- REMARKS:
- Dimensions are in inches(mm).
 - The lens is water-clear with a fresnel pattern.
 - This device is immune to peak noise current of 3mA.
 - Caution: GAIN LEDs are class 1 ESD sensitive (MIL-STD-1686). Exceeding absolute maximum ratings may cause damage to, or possibly result in catastrophic failure of these devices. Use appropriate ESD precautions during handling and operation.
 - For 200-NW LED chromaticity coordinate range, see drawing #502590.



Data Display Products			
445 S. DOUGLAS ST., EL SEGUNDO, CA. 90245 (310)640-0442 FAX: (310)640-7639			
DATE:	010711	DWN BY:	LC
LAST REV. DATE:	-	REV LEVEL	1
TITLE	120PCLS-NWX		
SCALE:	TOL:	ANG.	DWG NUMBER:
NONE	± .025(.63)	.010(.25)	503199