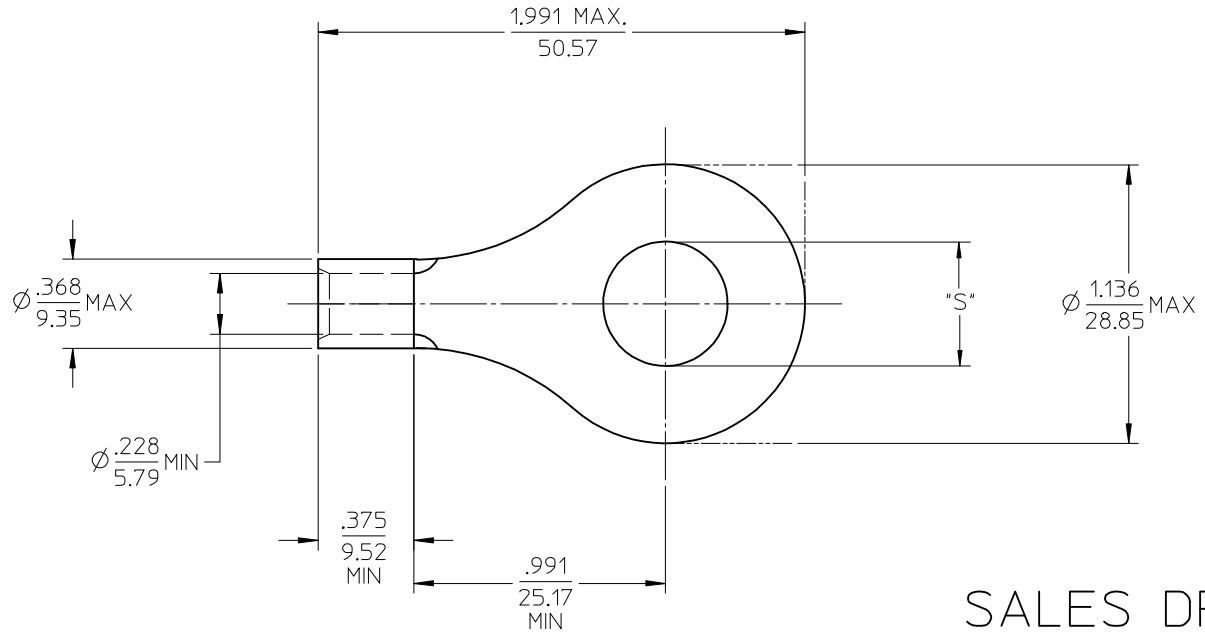


| MATERIAL NO.<br>LOOSE PIECE | ENG. NO. | STUD<br>SIZE | ±.003<br>"S" | STOCK<br>THICKNESS |
|-----------------------------|----------|--------------|--------------|--------------------|
| 191930237                   | E-359-14 | 1/4          | .265         | .050/(1.27) (B)    |
| 191930240                   | E-359-56 | 5/16         | .328         |                    |
| 191930239                   | E-359-38 | 3/8          | .390         |                    |
| 191930242                   | E-359-76 | 7/16         | .453         |                    |
| 191930236                   | E-359-12 | 1/2          | .515         |                    |
| 191930241                   | E-359-58 | 5/8          | .656         |                    |
| 191930238                   | E-359-34 | 3/4          | .781         |                    |



SALES DRAWING

- NOTE(S):
1. MATERIAL: COPPER
  2. PLATING: ELECTROPLATE TIN
  3. ALL DIMENSIONS IN INCHES/(MM).  
16 MM<sup>2</sup>
  5. PART IS ROHS COMPLIANT. (B)

|  |                    |   |   |   |                              |  |                        |
|--|--------------------|---|---|---|------------------------------|--|------------------------|
| REVISED MATL THKNS<br>EC NO: ETC2007-0003<br>DRAWN BY: DRW:HEHLE 2006/07/12<br>CHKD: JMACNEIL 2006/07/19<br>APPR: RDEROSS 2006/07/26 | DESCRIPTION<br>REV | QUALITY SYMBOLS   | GENERAL TOLERANCES (UNLESS SPECIFIED)   | DIMENSION STYLE   | SCALE                        | DESIGN UNITS                                       | THIRD ANGLE PROJECTION |
|  |                    | ▼=0<br>▽=0  | mm INCH<br>4 PLACES ± --- ± ---<br>3 PLACES ± --- ± .005<br>2 PLACES ± 0.13 ± .01<br>1 PLACE ± 0.25 ± ---<br>ANGULAR ± 1/2° | IN/MM<br>DRAWN BY DATE<br>DLM 03/07/28<br>CHECKED BY DATE<br>HEB 03/07/28<br>APPROVED BY DATE<br>RWD 03/07/28 | 2:1<br>INCH                  | RING TONGUE TERMINAL<br>VERSAKRIMP SERIES<br>6 AWG |                        |
|  |                    | DRAFT WHERE APPLICABLE<br>MUST REMAIN<br>WITHIN DIMENSIONS  | MATERIAL NO.<br>SEE CHART   | MOLEX INCORPORATED  | DOCUMENT NO.<br>SD-19193-031 | SHEET NO.<br>1 OF 1                                |                        |
|  |                    | THIS DRAWING CONTAINS INFORMATION THAT IS PROPRIETARY TO MOLEX INCORPORATED AND SHOULD NOT BE USED WITHOUT WRITTEN PERMISSION |   |   |                              |  |                        |