

List of "SFW\_\_R-3/4STZE5LF" customer document

DOCUMENT NO.	LIST
10091601(SHEET1)	DOCUMENT LIST
10091601(SHEET2)	CAT. NO. TABLE FOR 1mm SPACING SMT CONNECTOR (SFW__R-3/4STZ__LF)
10091601(SHEET3)	1mm SPACING SMT CONNECTOR (SFW__R-3STZ__LF)
10091601(SHEET4)	1mm SPACING SMT CONNECTOR (SFW__R-4STZ__LF)
10091601(SHEET5)	CAT. NO. TABLE FOR PLASTIC TAPE PACKAGED 1mm SPACING SMT CONNECTOR (SFW__R-3/4STZE5LF)
10091601(SHEET6)	PLASTIC TAPE PACKAGED 1mm SPACING SMT CONNECTOR (SFW__R-3STZE5LF)
10091601(SHEET7)	PLASTIC TAPE PACKAGED 1mm SPACING SMT CONNECTOR (SFW__R-4STZE5LF)
10091601(SHEET8)	RECOMMENDED CABLE (FPC) (SFW__R-3/4ST__)
10091601(SHEET9)	RECOMMENDED CABLE (FFC) (SFW__R-3/4ST__)
SC-SFW11	PRODUCT SPECIFICATION
GS-20-130	HANDLING PROCEDURES

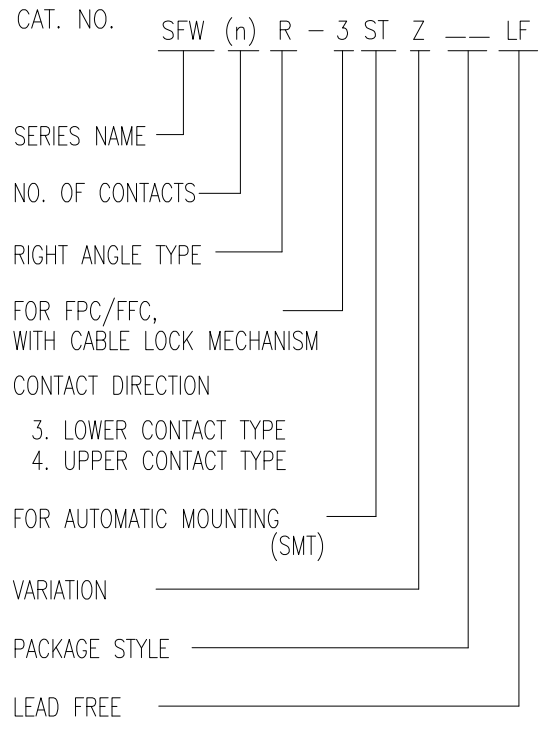


© 2016 AFCl

mat'l. code				surface		tolerance		projection		product family										
-				ISO 1302		ISO 406 ISO 1101				58RF										
ltr	ecn no	dr	date	tolerances unless otherwise specified				MM		title										
A	S08-0266	H.T	2008-8-13	angles	linear					1mm SPACING SMT CONNECTOR DOCUMENT LIST (Cat. No. : SFW__R-3/4STZE5LF)										
B	S08-0277	S.W	2008-8-25					scale N/A		dwg no										
C	J09-0380	S.W	2009-10-27							sheet 1 of 9 size										
D	ELX-J-32994	S.W	2019-3-25	dr	S.WATANABE	2019-3-25			10091601 A4											
				enr	S.WATANABE	2019-3-25			type Product Customer Drawing											
				chr	S-H.THIO	2019-3-25														
				appd	Y.KAMEDA	2019-3-25														
sheet index	revision sheet	D	D	D	D	D	D	D	D	D	D	D	D	D	D	D	D	D	D	D
		1	2	3	4	5	6	7	8	9										

CAT. NO. & DIMENSIONS

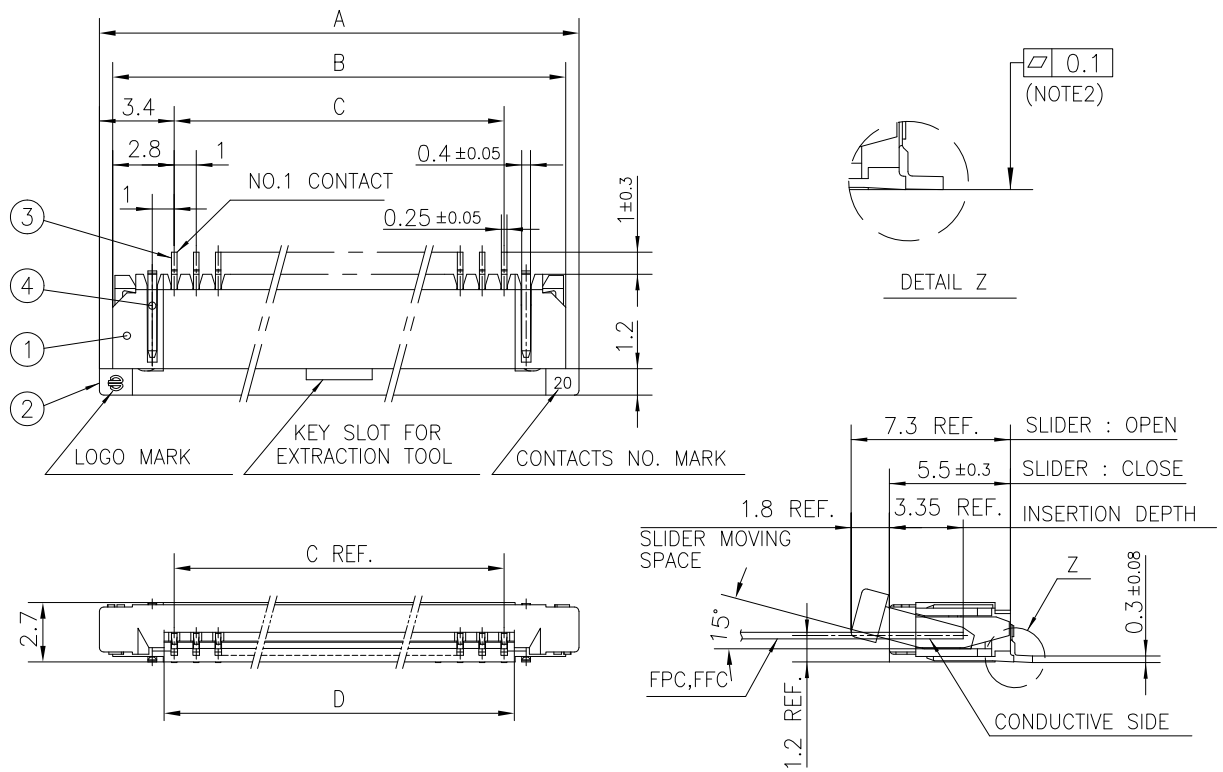
NO. OF CONTACTS (n)	CAT. NO.	DIMENSIONS (NOTE2)			
		A ± 0.2	B ± 0.2	C ± 0.2	D ± 0.1
4	SFW4R-3/4STZ__LF	9.8	8.6	3.0	3.92
5	SFW5R-3/4STZ__LF	10.8	9.6	4.0	4.92
6	SFW6R-3/4STZ__LF	11.8	10.6	5.0	5.92
7	SFW7R-3/4STZ__LF	12.8	11.6	6.0	6.92
8	SFW8R-3/4STZ__LF	13.8	12.6	7.0	7.92
9	SFW9R-3/4STZ__LF	14.8	13.6	8.0	8.92
10	SFW10R-3/4STZ__LF	15.8	14.6	9.0	9.92
11	SFW11R-3/4STZ__LF	16.8	15.6	10.0	10.92
12	SFW12R-3/4STZ__LF	17.8	16.6	11.0	11.92
13	SFW13R-3/4STZ__LF	18.8	17.6	12.0	12.92
14	SFW14R-3/4STZ__LF	19.8	18.6	13.0	13.92
15	SFW15R-3/4STZ__LF	20.8	19.6	14.0	14.92
16	SFW16R-3/4STZ__LF	21.8	20.6	15.0	15.92
17	SFW17R-3/4STZ__LF	22.8	21.6	16.0	16.92
18	SFW18R-3/4STZ__LF	23.8	22.6	17.0	17.92
19	SFW19R-3/4STZ__LF	24.8	23.6	18.0	18.92
20	SFW20R-3/4STZ__LF	25.8	24.6	19.0	19.92
21	SFW21R-3/4STZ__LF	26.8	25.6	20.0	20.92
22	SFW22R-3/4STZ__LF	27.8	26.6	21.0	21.92
23	SFW23R-3/4STZ__LF	28.8	27.6	22.0	22.92
24	SFW24R-3/4STZ__LF	29.8	28.6	23.0	23.92
25	SFW25R-3/4STZ__LF	30.8	29.6	24.0	24.92
26	SFW26R-3/4STZ__LF	31.8	30.6	25.0	25.92
27	SFW27R-3/4STZ__LF	32.8	31.6	26.0	26.92
28	SFW28R-3/4STZ__LF	33.8	32.6	27.0	27.92
29	SFW29R-3/4STZ__LF	34.8	33.6	28.0	28.92
30	SFW30R-3/4STZ__LF	35.8	34.6	29.0	29.92



NOTES

1. THIS PRODUCT IS THE CONNECTOR USED FOR FPC/FFC AND COPES WITH AUTOMATIC MOUNTING (SMT).
2. SEE PART DRAWINGS FOR DIMENSIONS A~D.
3. THIS PRODUCT IS THE CONNECTOR WITH CABLE LOCK MECHANISM.

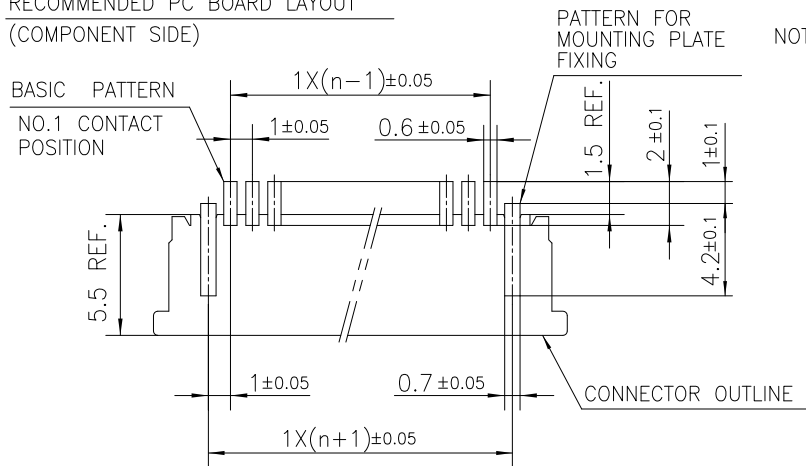
mat'l. code		surface ISO 1302 <input checked="" type="checkbox"/>		tolerance ISO 406 ISO 1101		projection		product family 58RF			
ltr	ecn no	dr	date	tolerances unless otherwise specified		MM		title CAT NO. TABLE FOR 1mm SPACING SMT CONNECTOR (Cat. No. SFW__R-3/4STZ__LF)			
D				angles	linear	scale N/A		dwg no 10091601		sheet 2 of 9	size A4
				dr	S.WATANABE	2019-3-25		type Product Customer Drawing			
				enr	S.WATANABE	2019-3-25					
				chr	S-H.THIO	2019-3-25					
				appd	Y.KAMEDA	2019-3-25					
sheet index	revision sheet										



PT. NO.	PARTS NAME	MATERIAL	Q'TY	NOTE
1	HOUSING	PPS RESIN GLASS REINFORCED (UL94V-0)	1	COLOR : BLACK
2	SLIDER		1	COLOR : BROWN
3	CONTACT	PHOSPHOR BRONZE	n	PLATING : THIN TIN
4	MOUNTING PLATE		2	PLATING : TIN

n : NO. OF CONTACTS

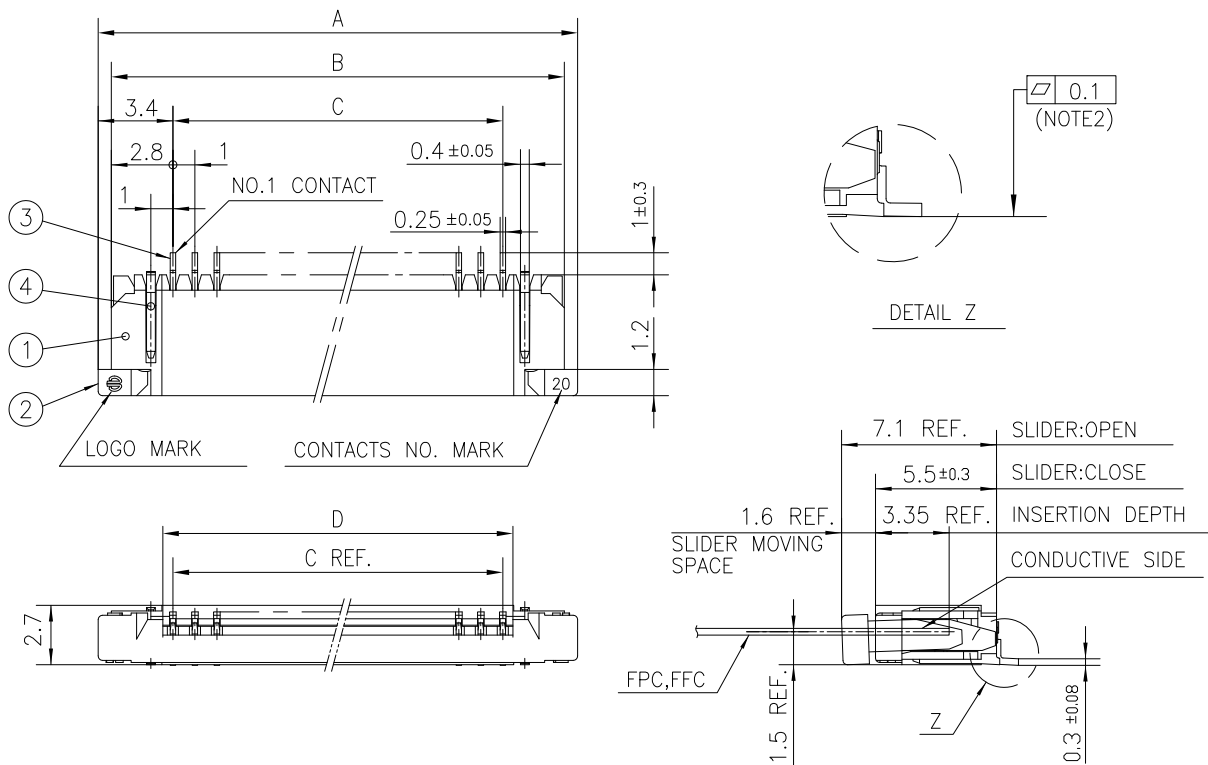
RECOMMENDED PC BOARD LAYOUT  
(COMPONENT SIDE)



NOTES

1. THIS PRODUCT IS THE CONNECTOR USED FOR FPC/FFC AND COPES WITH AUTOMATIC MOUNTING (SMT).
2. FLATNESS FOR CONTACT TERMINAL HOUSING MUST BE WITHIN TOLERANCE IN Z PORTION DETAILED DRAWING.
3. THIS PRODUCT IS LOWER CONTACT TYPE CONNECTOR WITH CABLE LOCK MECHANISM.
4. THIS PRODUCT MEETS EUROPEAN UNION DIRECTIVES AND OTHER COUNTRY REGULATIONS AS DESCRIBED IN GS-22-008.
5. THE HOUSING WILL WITHSTAND EXPOSURE TO 260°C PEAK TEMPERATURE FOR 10 SECONDS IN A REFLOW SOLDERING OVEN.

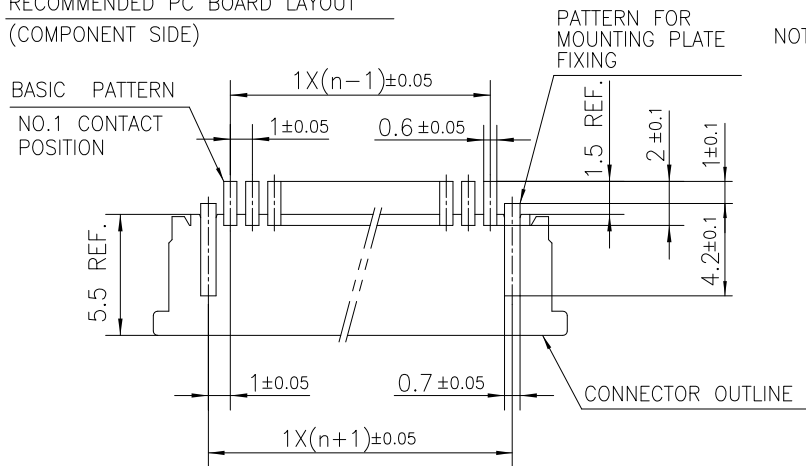
mat'l. code		surface		tolerance		projection		product family		
-		ISO 1302		ISO 406 ISO 1101				58RF		
ltr	ecn no	dr	date	tolerances unless otherwise specified				title		
D				angles	linear			1mm SPACING SMT CONNECTOR (Cat. No. SFW__R-3STZ__LF)		
		dr	S.WATANABE	2019-3-25				dwg no		
		enr	S.WATANABE	2019-3-25				sheet 3 of 9		size
		chr	S-H.THIO	2019-3-25				10091601		A4
		appd	Y.KAMEDA	2019-3-25				type		Product Customer Drawing
sheet index	revision sheet									



PT. NO.	PARTS NAME	MATERIAL	Q'TY	NOTE
1	HOUSING	PPS RESIN GLASS REINFORCED (UL94V-0)	1	COLOR : BLACK
2	SLIDER		1	COLOR : BROWN
3	CONTACT	PHOSPHOR BRONZE	n	PLATING : THIN TIN
4	MOUNTING PLATE		2	PLATING : TIN

n : NO. OF CONTACTS

RECOMMENDED PC BOARD LAYOUT (COMPONENT SIDE)



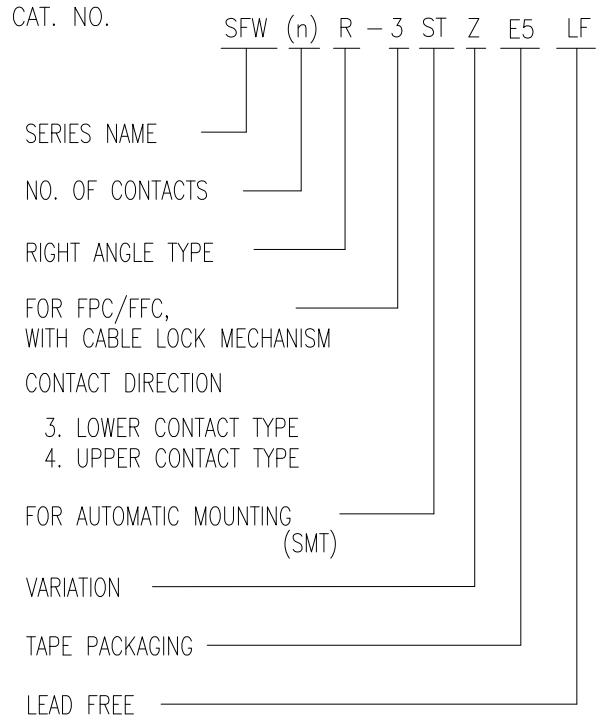
NOTES

1. THIS PRODUCT IS THE CONNECTOR USED FOR FPC/FFC AND COPES WITH AUTOMATIC MOUNTING (SMT).
2. FLATNESS FOR CONTACT TERMINAL HOUSING MUST BE WITHIN TOLERANCE IN Z PORTION DETAILED DRAWING.
3. THIS PRODUCT IS UPPER CONTACT TYPE CONNECTOR WITH CABLE LOCK MECHANISM.
4. THIS PRODUCT MEETS EUROPEAN UNION DIRECTIVES AND OTHER COUNTRY REGULATIONS AS DESCRIBED IN GS-22-008.
5. THE HOUSING WILL WITHSTAND EXPOSURE TO 260°C PEAK TEMPERATURE FOR 10 SECONDS IN A REFLOW SOLDERING OVEN.

mat'l. code		surface		tolerance		projection		product family	
-		ISO 1302		ISO 406 ISO 1101				58RF	
ltr	ecn no	dr	date	tolerances unless otherwise specified				title	
D				angles linear ±0.2		MM		1mm SPACING SMT CONNECTOR (Cat. No. SFW__R-4STZ__LF)	
		dr	S.WATANABE	2019-3-25				dwg no	
		enr	S.WATANABE	2019-3-25				sheet 4 of 9	
		chr	S-H.THIO	2019-3-25				size	
		app	Y.KAMEDA	2019-3-25				A4	
sheet index		revision sheet						type Product Customer Drawing	

CAT. NO. & DIMENSIONS

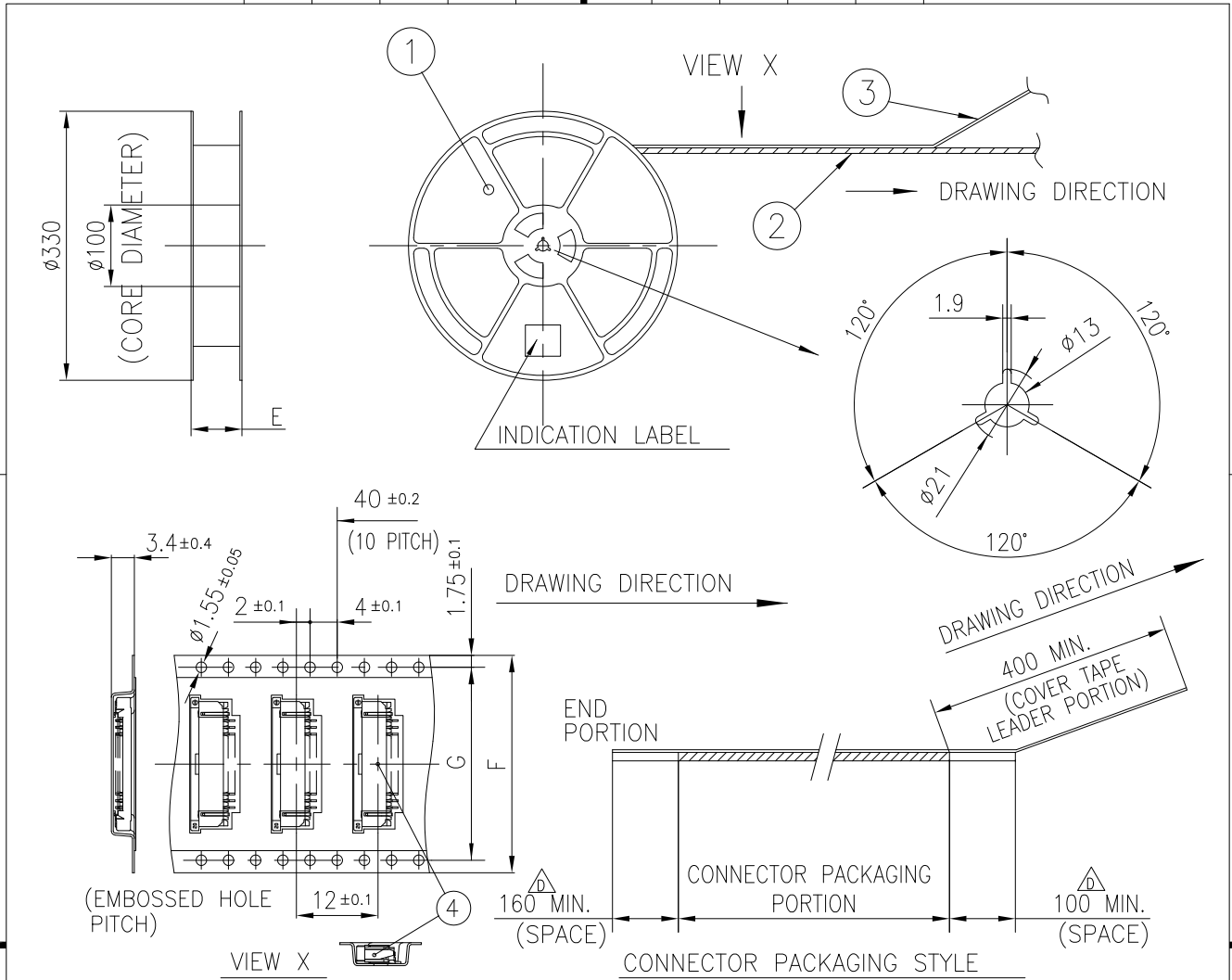
NO. OF CONTACTS (n)	CAT. NO. (NOTE2)	DIMENSIONS (NOTE3)		
		E MAX.	F ± 0.3	G ± 0.1
4	SFW4R-3/4STZE5LF	22.4	16	—
5	SFW5R-3/4STZE5LF	30.4	24	—
6	SFW6R-3/4STZE5LF	30.4	24	—
7	SFW7R-3/4STZE5LF	30.4	24	—
8	SFW8R-3/4STZE5LF	30.4	24	—
9	SFW9R-3/4STZE5LF	30.4	24	—
10	SFW10R-3/4STZE5LF	30.4	24	—
11	SFW11R-3/4STZE5LF	30.4	24	—
12	SFW12R-3/4STZE5LF	30.4	24	—
13	SFW13R-3/4STZE5LF	38.4	32	28.4
14	SFW14R-3/4STZE5LF	38.4	32	28.4
15	SFW15R-3/4STZE5LF	38.4	32	28.4
16	SFW16R-3/4STZE5LF	38.4	32	28.4
17	SFW17R-3/4STZE5LF	50.4	44	40.4
18	SFW18R-3/4STZE5LF	50.4	44	40.4
19	SFW19R-3/4STZE5LF	50.4	44	40.4
20	SFW20R-3/4STZE5LF	50.4	44	40.4
21	SFW21R-3/4STZE5LF	50.4	44	40.4
22	SFW22R-3/4STZE5LF	50.4	44	40.4
23	SFW23R-3/4STZE5LF	50.4	44	40.4
24	SFW24R-3/4STZE5LF	50.4	44	40.4
25	SFW25R-3/4STZE5LF	50.4	44	40.4
26	SFW26R-3/4STZE5LF	50.4	44	40.4
27	SFW27R-3/4STZE5LF	50.4	44	40.4
28	SFW28R-3/4STZE5LF	62.4	56	52.4
29	SFW29R-3/4STZE5LF	62.4	56	52.4
30	SFW30R-3/4STZE5LF	62.4	56	52.4



NOTES

1. THIS PRODUCT IS THE CONNECTOR USED FOR FPC/FFC AND COPEs WITH AUTOMATIC MOUNTING (SMT).
2. THIS CATALOG NO. INDICATES PLASTIC TAPE PACKAGED CONNECTOR.
3. SEE PART DRAWINGS FOR DIMENSIONS E~G.
4. THIS PRODUCT IS THE CONNECTOR WITH CABLE LOCK MECHANISM.

mat'l. code				surface <input checked="" type="checkbox"/> ISO 1302		tolerance <input checked="" type="checkbox"/> ISO 406 <input type="checkbox"/> ISO 1101		projection		product family 58RF			
ltr	ecn no	dr	date	tolerances unless otherwise specified				MM		title			
D				angles		linear		scale N/A		CAT NO. TABLE FOR PLASTIC TAPE PACKAGED 1mm SPACING SMT CONNECTOR (Cat. No. SFW__R-3/4STZE5LF)			
				dr	S.WATANABE	2019-3-25				dwg no		sheet 5 of 9	size
				enr	S.WATANABE	2019-3-25				10091601		A4	
				chr	S-H.THIO	2019-3-25							
				appd	Y.KAMEDA	2019-3-25							
sheet index		revision sheet											

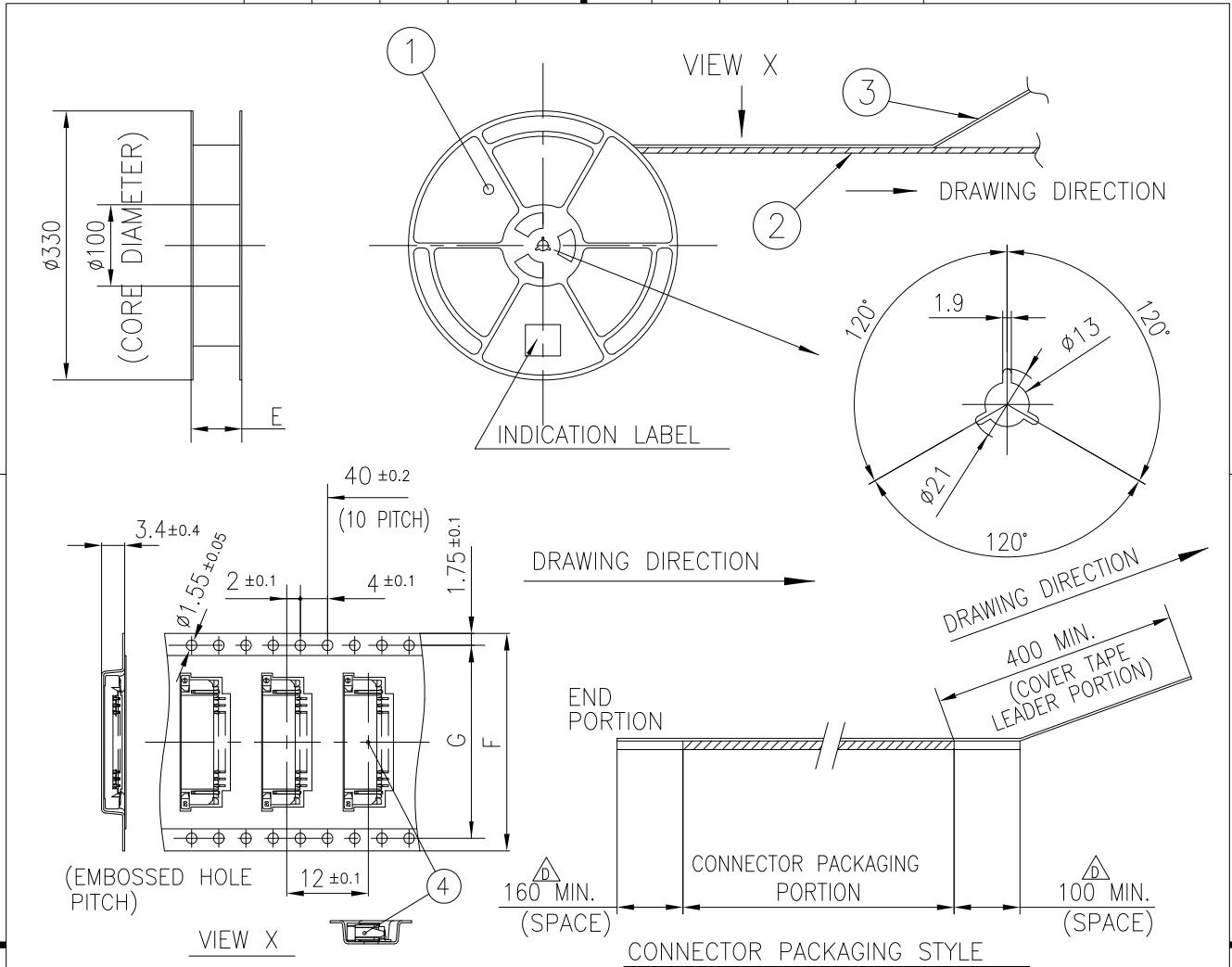


PT. NO.	PARTS NAME	CAT. NO.	MATERIAL	Q'TY	NOTE
1	REEL	_____	POLYSTYRENE	1	COLOR : WHITE or BLACK
2	PLASTIC (EMBOSS) TAPE	_____	△ PS or A-PET	_____	COLOR:TRANSPARENCY
3	COVER	_____	△ POLYESTER,POLYETHYLENE	_____	COLOR:TRANSPARENCY
4	CONNECTOR	SFW__R-3STZ__LF	SEE ATTACHED DWG.	1500	LOWER CONTACT TYPE

NOTES

1. THIS IS PLASTIC TAPE PACKAGED CONNECTOR WITH CABLE LOCK MECHANISM USED FOR FPC/FFC AND COPEs WITH AUTOMATIC MOUNTING (SMT).
2. SEE JIS C 0806 (PACKING OF ELECTRONIC COMPONENTS ON CONTINUOUS TAPES (SURFACE MOUNTING DEVICES)) FOR SHAPE AND DIMENSIONS OF PLASTIC (EMBOSS) TAPE AND REEL.
3. E DIMENSION IS PORTION OF THE CORE.

mat'l. code		surface		tolerance		projection		product family	
-		ISO 1302 ✓		ISO 406 ISO 1101				58RF	
ltr	ecn no	dr	date			tolerances unless otherwise specified		title	
D						angles linear ±5 ±5°		PLASTIC TAPE PACKAGED 1mm SPACING SMT CONNECTOR (Cat. No. SFW__R-3STZE5LF)	
			dr	S.WATANABE	2019-3-25	MM		dwg no	
			enr	S.WATANABE	2019-3-25			sheet 6 of 9	
			chr	S-H.THIO	2019-3-25	scale N/A		size	
			appd	Y.KAMEDA	2019-3-25			A4	
sheet index		revision sheet						type Product Customer Drawing	



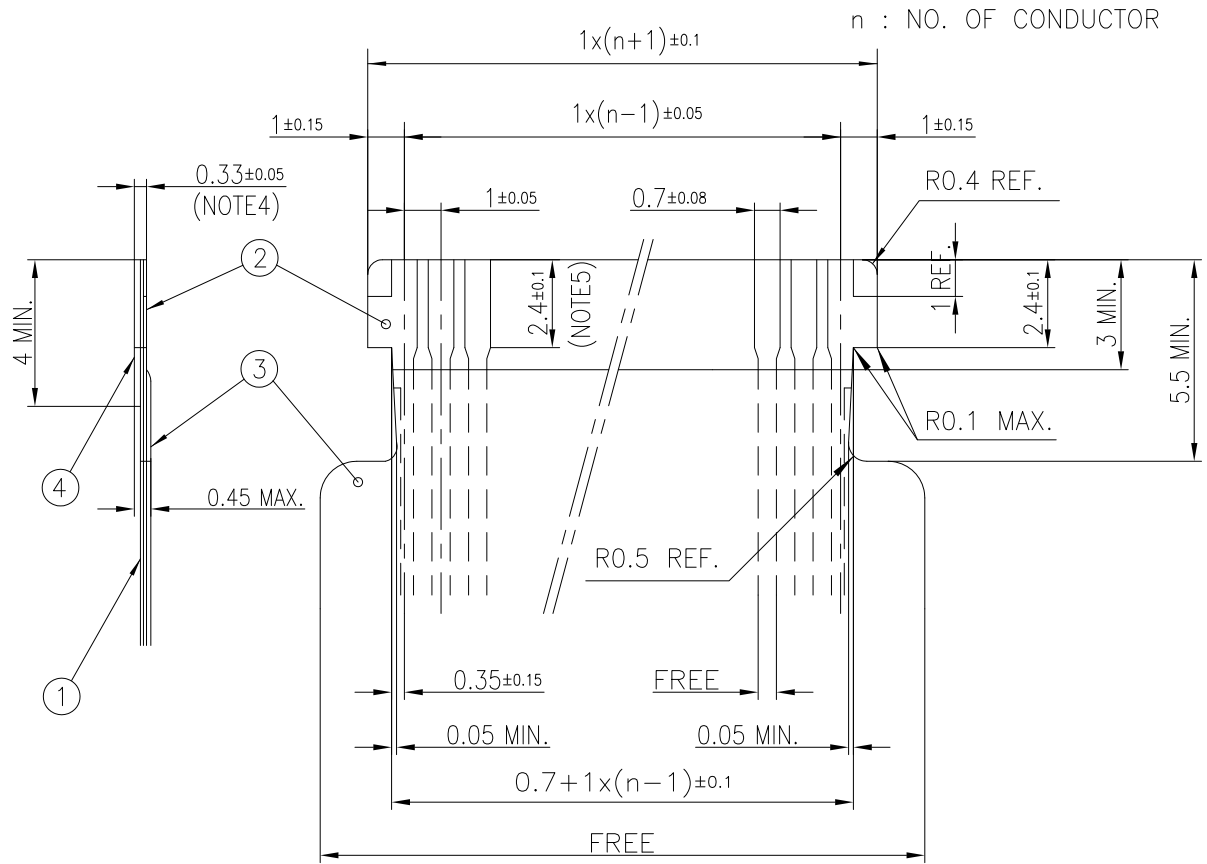
PT. NO.	PARTS NAME	CAT. NO.	MATERIAL	Q'TY	NOTE
1	REEL	—	POLYSTYRENE	1	COLOR : WHITE or BLACK
2	PLASTIC (EMBOSS) TAPE	—	△ PS or A-PET	—	COLOR:TRANSPARENCY
3	COVER	—	△ POLYESTER,POLYETHYLENE	—	COLOR:TRANSPARENCY
4	CONNECTOR	SFW__R-4STZ__LF	SEE ATTACHED DWG.	1500	UPPER CONTACT TYPE

NOTES

- THIS IS PLASTIC TAPE PACKAGED CONNECTOR WITH CABLE LOCK MECHANISM USED FOR FPC/FFC AND COPES WITH AUTOMATIC MOUNTING (SMT).
- SEE JIS C 0806 (PACKING OF ELECTRONIC COMPONENTS ON CONTINUOUS TAPES (SURFACE MOUNTING DEVICES)) FOR SHAPE AND DIMENSIONS OF PLASTIC (EMBOSS) TAPE AND REEL.
- E DIMENSION IS PORTION OF THE CORE.

mat'l. code		surface ISO 1302 ✓		tolerance ISO 406 ISO 1101		projection		product family					
—								58RF					
ltr	ecn no	dr	date	tolerances unless otherwise specified				title					
D				angles	±5			PLASTIC TAPE PACKAGED					
				linear				1mm SPACING SMT CONNECTOR					
				±5°				(Cat. No. SFW__R-4STZE5LF)					
			dr	S.WATANABE	2019-3-25		scale N/A		dwg no		sheet 7 of 9	size	
			enr	S.WATANABE	2019-3-25				10091601		A4		
			chr	S-H.THIO	2019-3-25				type		Product Customer Drawing		
			appd	Y.KAMEDA	2019-3-25								
sheet index	revision sheet	1											

RECOMMENDED CABLE (FPC)



PT. NO.	PARTS NAME	MATERIAL	THICKNESS(um)
1	BASE FILM	POLYIMIDE OR POLYESTER OR EQUAL	25
2	CONDUCTOR	COPPER FOIL(PLATING: TIN OR SOLDER 1um MIN.)	35
3	OVERLAY	POLYIMIDE OR POLYESTER OR EQUAL	—
4	SUPPORTING TAPE	POLYESTER OR POLYIMIDE OR EQUAL	188

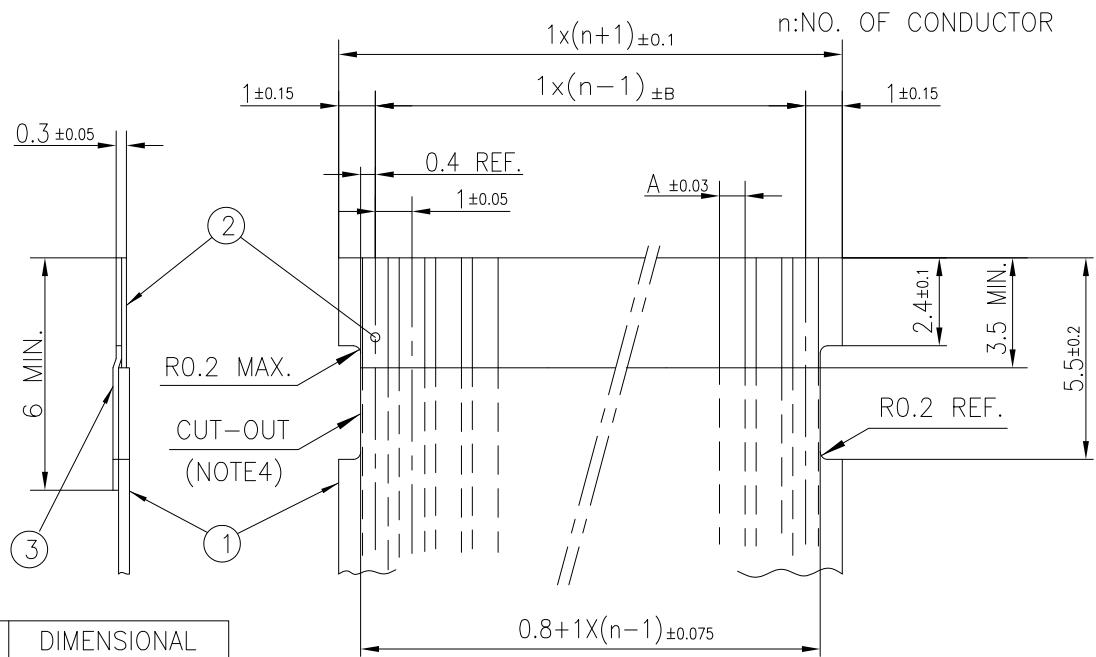
NOTES

1. THIS DRAWING INDICATES THE FPC USED THE CONNECTOR WITH CABLE LOCK MECHANISM.
2. NO BURR AT EACH PORTION.
3. NO PEELING IN COMMON USE.
4. TOTAL THICKNESS LIMIT OF EACH MATERIAL (INCLUDING ADHESIVE AGENT) IS SPECIFIED.
5. THIS DIMENSION INDICATES THE RANGE FOR 0.7±0.08 CONDUCTOR WIDTH.

mat'l. code		surface		tolerance		projection		product family		
—		ISO 1302		ISO 406 ISO 1101				58RF		
ltr	ecn no	dr	date	tolerances unless otherwise specified				title		
D				angles		MM		RECOMMENDED CABLE		
				linear				(Cat. No. SFW__R-3/4ST__)		
			dr	S.WATANABE	2019-3-25			dwg no		
			enr	S.WATANABE	2019-3-25			sheet 8 of 9		size
			chr	S-H.THIO	2019-3-25			10091601		A4
			appd	Y.KAMEDA	2019-3-25			type Product Customer Drawing		
sheet index	revision sheet									



RECOMMENDED CABLE (FFC)



KIND OF FFC (NOTE5)	DIMENSIONAL TOLERANCE	
	A	B
1	0.7	0.1
2	0.6	0.07

PT. NO.	PARTS NAME	MATERIAL	NOTE
1	INSULATOR	FLAME RESISTING POLYESTER OR EQUAL	_____
2	CONDUCTOR	COPPER FOIL	PLATING : TIN OR SOLDER 1um MIN.
3	SUPPORTING TAPE	FLAME RESISTING POLYESTER OR EQUAL	_____

- NOTES
1. THIS DRAWING INDICATES THE FFC USED THE CONNECTOR WITH CABLE LOCK MECHANISM.
  2. NO BURR AT EACH PORTION.
  3. NO PEELING IN COMMON USE.
  4. THERE IS A POSSIBILITY THAT THE CAT-OUT CROSSES THE CONDUCTOR BECAUSE OF DIMENSIONAL TOLERANCE.
  5. EITHER KIND1 OR KIND2 OF FFC CAN ACCEPT DIMENSIONAL TOLERANCE a AND b.

mat'l. code		surface ISO 1302		tolerance ISO 406 ISO 1101		projection		product family			
_		✓				⊕		58RF			
ltr	ecn no	dr	date	tolerances unless otherwise specified				title			
D				angles	linear	MM		RECOMMENDED CABLE (Cat. No. SFW__R-3/4ST__)			
						scale 5:1		dwg no		sheet 9 of 9	size
				dr	S.WATANABE	2019-3-25	Amphenol FCi	10091601		A4	
				enr	S.WATANABE	2019-3-25		type Product Customer Drawing			
				chr	S-H.THIO	2019-3-25					
				appd	Y.KAMEDA	2019-3-25					
sheet index	revision sheet										