

Features

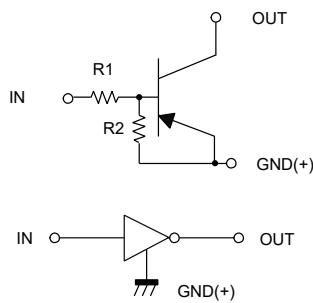
- Built-In Bias Resistors Enable the Configuration of an Inverter Circuit without Connecting External Input Resistors
- The Bias Resistors Consist of Thin-Film Resistors with Complete Isolation to Allow Negative Biasing of the Input. They Also Have the Advantage of Almost Completely Eliminating Parasitic Effects
- Only the On/Off Conditions Need to Be Set for Operation, Making Device Design Easy
- Halogen Free. "Green" Device (Note 1)
- Moisture Sensitivity Level 1
- Epoxy meets UL 94 V-0 flammability rating
- Lead Free Finish/RoHS Compliant ("P" Suffix designates RoHS Compliant. See ordering information)

Maximum Ratings @ 25°C Unless Otherwise Noted

Parameter	Symbol	Min	Typ	Max	Unit
Supply Voltage	V_{CC}			-50	V
Input Voltage	V_{IN}	-10		5	V
Output Current	I_O			-100	mA
Power Dissipation	P_D			200	mW
Junction Temperature	T_J	-55		150	°C
Storage Temperature	T_{stg}	-55		150	°C

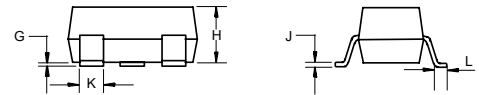
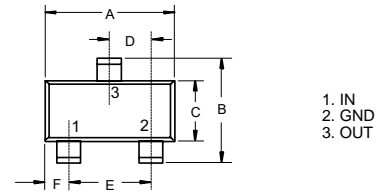
Note: 1. Halogen free "Green" products are defined as those which contain <900ppm bromine, <900ppm chlorine (<1500ppm total Br + Cl) and <1000ppm antimony compounds.

Internal Structure



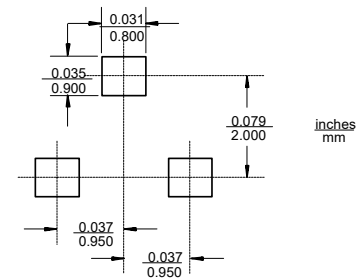
**PNP
Digital
Transistors**

SOT-23



DIM	INCHES		MM		NOTE
	MIN	MAX	MIN	MAX	
A	0.110	0.120	2.80	3.04	
B	0.083	0.104	2.10	2.64	
C	0.047	0.055	1.20	1.40	
D	0.034	0.041	0.85	1.05	
E	0.067	0.083	1.70	2.10	
F	0.018	0.024	0.45	0.60	
G	0.0004	0.006	0.01	0.15	
H	0.035	0.043	0.90	1.10	
J	0.003	0.007	0.08	0.18	
K	0.012	0.020	0.30	0.51	
L	0.007	0.020	0.20	0.50	

Suggested Solder Pad Layout



Electrical Characteristics @ 25°C Unless Otherwise Specified

Parameter	Symbol	Min	Typ	Max	Unit	Conditions
Collector-Emitter Cutoff Current	I_{CEO}			-500	nA	$V_{CE}=-50V, I_B=0$
Collector-Base Cutoff Current	I_{CBO}			-100	nA	$V_{CB}=-50V, I_E=0$
Emitter-Base Cutoff Current	I_{EBO}		-1400	-2500	μA	$V_{BE}=-6V, I_C=0$
Collector-Emitter Breakdown Voltage	BV_{CEO}	-50			V	$I_C=-2mA, I_B=0$
Collector-Base Breakdown Voltage	BV_{CBO}	-50			V	$I_C=-100\mu A, I_E=0$
Emitter-Base Breakdown Voltage	BV_{EBO}	-6			V	$I_E=-2mA, I_C=0$
Collector-Emitter Saturation Voltage	$V_{CE(sat)}$		-0.1	-0.25	V	$I_C=-10mA, I_B=-5mA$
Input Resistance	R_1	1.5	2.2	2.9	K Ω	
Resistance ratio	R_1/R_2	0.8	1	1.2		
DC Current Gain	h_{FE}	30				$V_{CE}=-10V, I_C=-20mA$

Curve Characteristics

Fig. 1 - DC Current Gain Characteristics

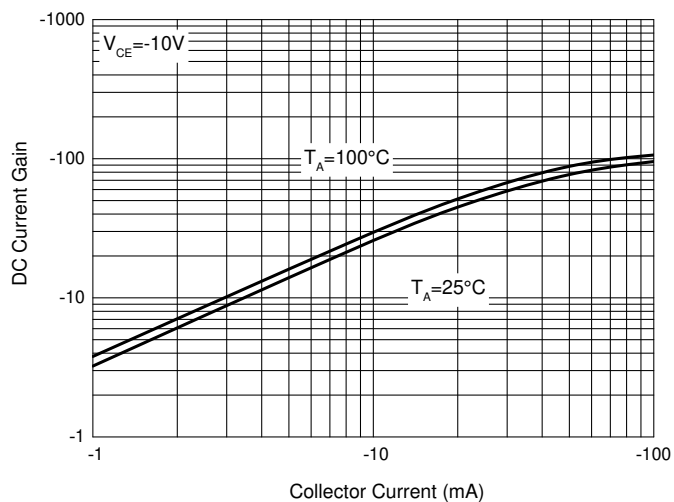


Fig. 2 - Collector-Emitter Saturation Voltage Characteristics

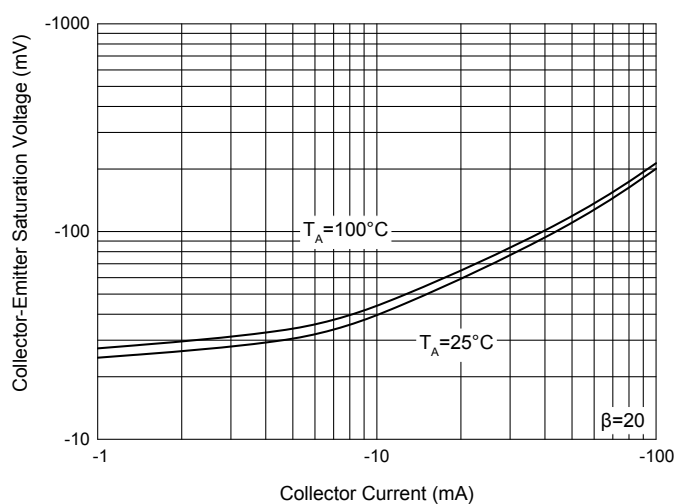
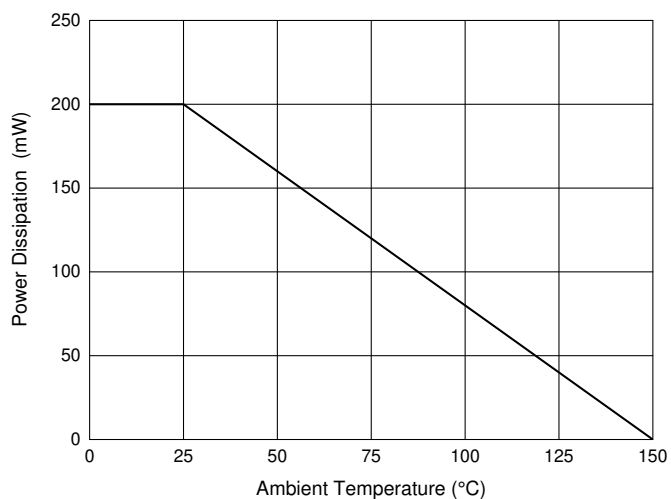


Fig. 3 - Power Derating Curve



Ordering Information

Device	Packing
Part Number-TP	Tape&Reel: 3Kpcs/Reel

IMPORTANT NOTICE

Micro Commercial Components Corp. reserves the right to make changes without further notice to any product herein to make corrections, modifications , enhancements , improvements , or other changes . **Micro Commercial Components Corp** . does not assume any liability arising out of the application or use of any product described herein; neither does it convey any license under its patent rights ,nor the rights of others . The user of products in such applications shall assume all risks of such use and will agree to hold **Micro Commercial Components Corp** . and all the companies whose products are represented on our website, harmless against all damages. **Micro Commercial Components Corp.** products are sold subject to the general terms and conditions of commercial sale, as published at <https://www.mccsemi.com/Home/TermsAndConditions>.

LIFE SUPPORT

MCC's products are not authorized for use as critical components in life support devices or systems without the express written approval of Micro Commercial Components Corporation.

CUSTOMER AWARENESS

Counterfeiting of semiconductor parts is a growing problem in the industry. Micro Commercial Components (MCC) is taking strong measures to protect ourselves and our customers from the proliferation of counterfeit parts. MCC strongly encourages customers to purchase MCC parts either directly from MCC or from Authorized MCC Distributors who are listed by country on our web page cited below. Products customers buy either from MCC directly or from Authorized MCC Distributors are genuine parts, have full traceability, meet MCC's quality standards for handling and storage. **MCC will not provide any warranty coverage or other assistance for parts bought from Unauthorized Sources.** MCC is committed to combat this global problem and encourage our customers to do their part in stopping this practice by buying direct or from authorized distributors.