

**NOTES:**

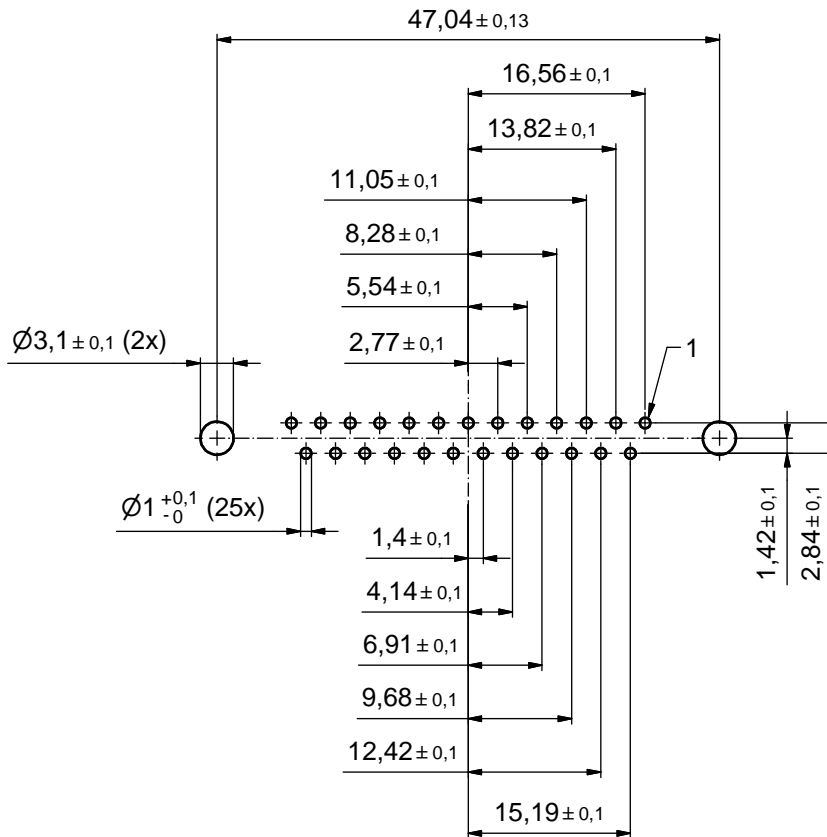
1. FOR WAVESOLDERING (SOLDER BATH TEMPERATURE 260°C FOR 5 SEC. AND SOLDER PREHEAT 100°C FOR 30 SEC.)
2. METALSHELLS: STEEL; min. 315µin TIN over 40-80µin NICKEL
3. INSULATOR: HIGH TEMPERATURE PLASTIC UL 94 V-0; BLACK
4. CONTACTS: COPPER ALLOY  
PLATING (SEE PART NO.)  
 PLEASE ADD C for 30µin HARD GOLD over min. 50µin NICKEL  
 PLEASE ADD B for 20µin HARD GOLD over min. 50µin NICKEL  
 PLEASE ADD A for GOLD FLASH over NICKEL ( PREFERRED TYPE )  
 CONTACT TAILS PRETINNED
5. THREADED REAR SPACERS: COPPER ALLOY; min. 200µin TIN over 80µin NICKEL
6. SLEEVES: COPPER ALLOY; min. 200µin TIN over 80µin NICKEL
7. CAPACITANCE: 830pF ± 20%
8. DIELECTRIC WITHSTANDING VOLTAGE: 424 VDC
9. P.C.B. HOLE DRILLINGS ON SHEET 2
10. MAXIMUM TORQUE VALUE FOR THREAD: 6 in.LB
11. CONNECTOR IS PART MARKED: 242□10470X CONEC ABC (see note 4)

Directive 2002/95/EC RoHS compliant

THIS DRAWING MAY NOT BE COPIED OR REPRODUCED IN ANY WAY, AND MAY NOT BE PASSED ON TO A THIRD PARTY WITHOUT WRITTEN PERMISSION. OWNERSHIP AND COPYRIGHT OF CONEC GmbH DO NOT ALTER CAD DRAWING BY HAND	tolerance		dim. in mm	scale: 2:1 (5:1)	
				material: SEE NOTES	
	date	name	title: <b>D-SUB C-FILTER FEMALE</b> 25pos. SOLDER PIN STRAIGHT with threaded rear spacer		
	drawn 26.06.2014	Heinrich			
	appd. 26.06.2014	Lehmenkühler			
norm		dwg no:		DIN-A3	
d-old		24K1A1534		sh: 1/2	
rev. a	Original	part no: 242□10470X (see note 4)			
description	date				

# P.C.B. HOLE DRILLINGS

(P.C.B. TOP SIDE)



THIS DRAWING MAY NOT BE COPIED OR REPRODUCED IN ANY WAY, AND MAY NOT BE PASSED ON TO A THIRD PARTY WITHOUT WRITTEN PERMISSION. OWNERSHIP AND COPYRIGHT OF CONEC GmbH DO NOT ALTER CAD DRAWING BY HAND				tolerance		scale: 2:1
				date	name	material: SEE SHEET 1
				drawn	26.06.2014	Heinrich
				appd.	26.06.2014	Lehmenkühler
				norm		
				d-old		
				title:		
				P.C.B. HOLE DRILLINGS		
				D-SUB C-FILTER FEMALE 25pos. SOLDER PIN with threaded rear spacer		
				dwg no:		
			24K1A1534			
			part no: SEE SHEET 1			
			DIN-A3			
			sh: 2/2			

