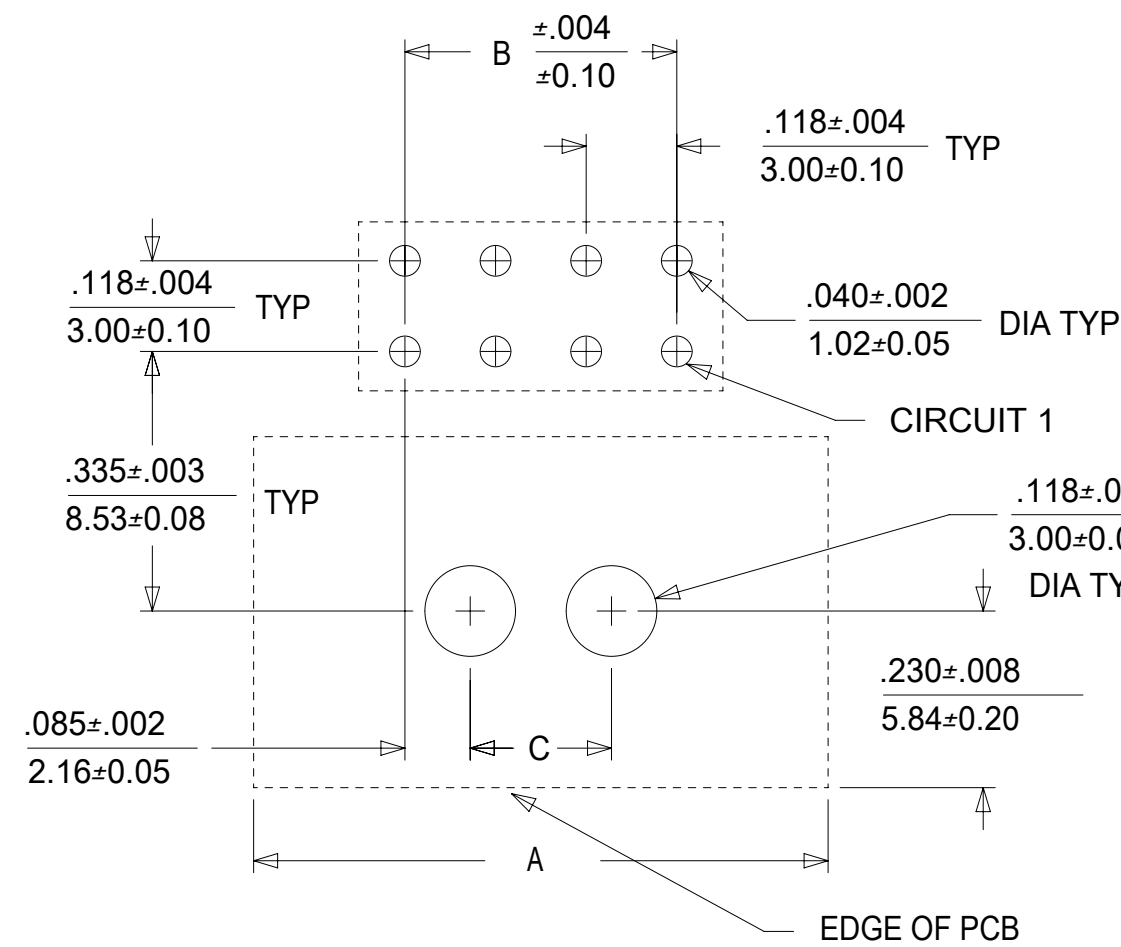
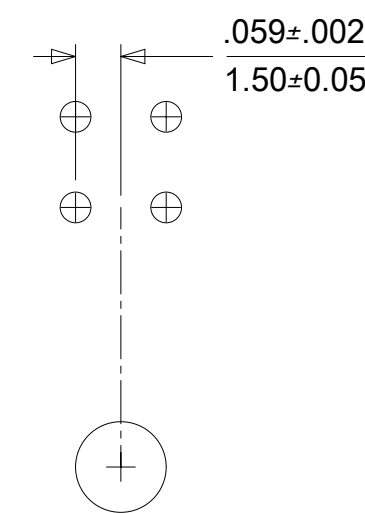


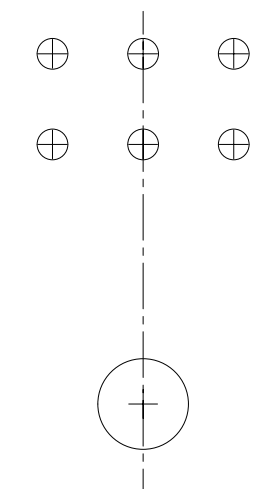
- NOTES :**
- MATERIALS - HOUSING :**
 A = NYLON , GLASS-FILLED, UL94V-0, COLOR - BLACK.
 B = LCP, GLASS-FILLED, UL94V-0, COLLOR - BLACK (LOW HALOGEN).
 TERMINAL : BRASS ALLOY
 TERMINAL POSITIONING STRIP : HIGH TEMPERATURE PET LAMINATE. COLOR - NATURAL
 - FINISH:**
 A= .000100/(0.00254) MIN. MATTE TIN OVER .000050/(0.00127) MIN. NICKEL.
 B= .000015/(0.00038) MIN. SELECT GOLD IN CONTACT AREA, .000100/(0.00254) MIN. MATTE TIN ON SOLDER TAILS, BOTH OVER .000050/(0.00127) MIN. NICKEL.
 C= .000030/(0.00076) MIN. SELECT GOLD IN CONTACT AREA, .000100/(0.00254) MIN. MATTE TIN ON SOLDER TAILS, BOTH OVER .000050/(0.00127) MIN. NICKEL.
 - PRODUCT SPECIFICATION : PS-44300-001
 - PACKAGING SPECIFICATION : PK-44428-001
 - THIS ASSEMBLY MATES WITH MOLEX BMI PANEL MOUNT RECEPTACLE SERIES 44133 WITH FEMALE CRIMP TERMINAL SERIES 43030 OR 46235, AND BMI RECEPTACLE HEADER SERIES 44764 (RIGHT ANGLE) AND 44769 (VERTICAL).
 - THIS PART CONFORMS TO CLASS 'B' REQUIREMENTS OF COSMETIC SPECIFICATION PS-45499-002.
 - RETENTION PEGS WILL NOT LATCH TO PCB THICKNESS GREATER THAN .062/1.57.



PCB LAYOUT: COMPONENT SIDE
 RECOMMENDED PCB THICKNESS .130/3.30 (SEE NOTE 7)
 8 THRU 24 CIRCUITS



PCB LAYOUT:
 COMPONENT SIDE
 4 CIRCUIT ONLY



PCB LAYOUT:
 COMPONENT SIDE
 6 CIRCUIT ONLY

CIRCUIT SIZE	A	B	C
04	.512 13.00	.118 3.00	NA
06	.630 16.00	.236 6.00	NA
08	.748 19.00	.354 9.00	.184 4.68
10	.866 22.00	.472 12.00	.302 7.68
12	.984 25.00	.590 15.00	.420 10.68
14	1.102 28.00	.709 18.00	.539 13.68
16	1.220 31.00	.827 21.00	.657 16.68
18	1.338 34.00	.945 24.00	.775 19.68
20	1.457 37.00	1.063 27.00	.893 22.68
22	1.575 40.00	1.181 30.00	1.011 25.68
24	1.693 43.00	1.299 33.00	1.129 28.68

SYMBOLS										THIS DRAWING CONTAINS INFORMATION THAT IS PROPRIETARY TO MOLEX ELECTRONIC TECHNOLOGIES, LLC AND SHOULD NOT BE USED WITHOUT WRITTEN PERMISSION									
DIMENSION UNITS					SCALE					CURRENT REV DESC: ADD 44428-XX10 P/N'S; FINISH "A" TO MATTE SN; ADD LCP HOUSING MATERIAL									
IN/MM					NTS					EC NO: 629554									
GENERAL TOLERANCES (UNLESS SPECIFIED)										DRWN: JEHRISMAN 2019/12/20									
4 PLACES ±					MM					INCH					CHK'D: SSOUSEK 2020/01/03				
3 PLACES ±					± 0.01					APPR: FSMITH 2020/01/08					INITIAL REVISION:				
2 PLACES ±					± 0.25 ± 0.015					DRWN: SSOUSEK 2009/06/01					DOC NUMBER				
1 PLACE ±					± 0.38 ±					APPR: FSMITH 2016/02/15					DOC TYPE DOC PART REVISION				
0 PLACES ±					±					ANGULAR TOL ± 0.5 °					SD-44428-006				
DRAFT WHERE APPLICABLE MUST REMAIN WITHIN DIMENSIONS					THIRD ANGLE PROJECTION					DRAWING					SERIES				
C-SIZE					44428					MATERIAL NUMBER					CUSTOMER				
SEE TABLE					GENERAL MARKET					SHEET NUMBER					1 OF 2				

molex

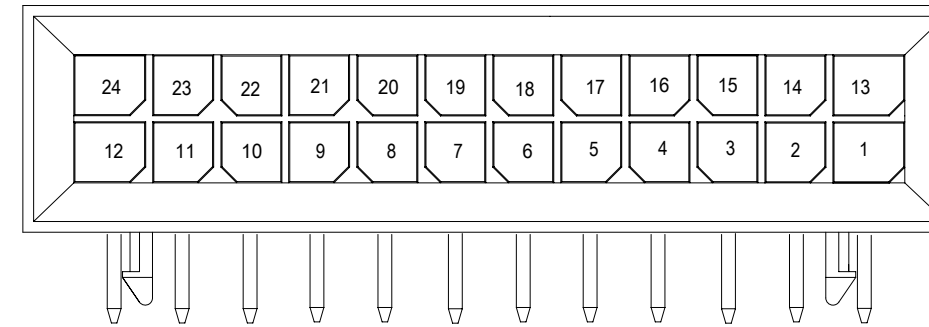
MICRO FIT(3.0) BMI RIGHT ANGLE, .130 PCB DUAL ROW HEADER ASSEMBLY

PRODUCT CUSTOMER DRAWING

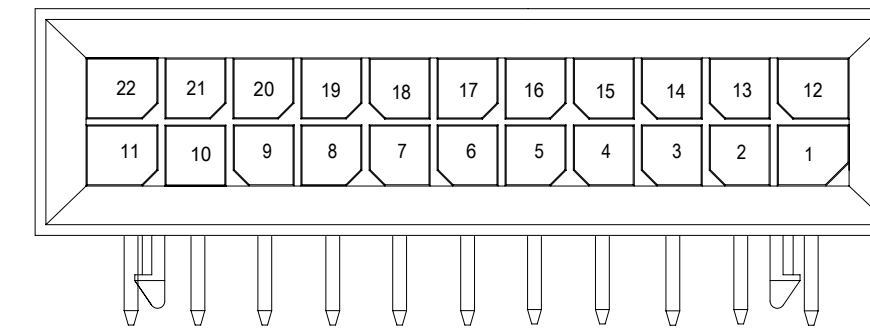
MATERIAL NUMBER	NUMBER OF CIRCUITS	FINISH OPTION	RETENTION PEG OPTION	HOUSING MATERIAL
44428-0408	04	A	YES	B
44428-0409	04	B	YES	
44428-0410	04	C	YES	
NOT ASSIGNED	04	A	NO	
NOT ASSIGNED	04	B	NO	
NOT ASSIGNED	04	C	NO	
44428-0608	06	A	YES	
44428-0609	06	B	YES	
44428-0610	06	C	YES	
NOT ASSIGNED	06	A	NO	
NOT ASSIGNED	06	B	NO	
NOT ASSIGNED	06	C	NO	
44428-0808	08	A	YES	B
44428-0809	08	B	YES	
44428-0810	08	C	YES	
NOT ASSIGNED	08	A	NO	
NOT ASSIGNED	08	B	NO	
NOT ASSIGNED	08	C	NO	
44428-1008	10	A	YES	
44428-1009	10	B	YES	
44428-1010	10	C	YES	
NOT ASSIGNED	10	A	NO	
NOT ASSIGNED	10	B	NO	
NOT ASSIGNED	10	C	NO	
44428-1208	12	A	YES	A
44428-1209	12	B	YES	
44428-1210	12	C	YES	
NOT ASSIGNED	12	A	NO	B
NOT ASSIGNED	12	B	NO	
NOT ASSIGNED	12	C	NO	
44428-1408	14	A	YES	
44428-1409	14	B	YES	
44428-1410	14	C	YES	
NOT ASSIGNED	14	A	NO	
NOT ASSIGNED	14	B	NO	
NOT ASSIGNED	14	C	NO	

MATERIAL NUMBER	NUMBER OF CIRCUITS	FINISH OPTION	RETENTION PEG OPTION	HOUSING MATERIAL
44428-1608	16	A	YES	B
44428-1609	16	B	YES	
44428-1610	16	C	YES	
NOT ASSIGNED	16	A	NO	
NOT ASSIGNED	16	B	NO	
NOT ASSIGNED	16	C	NO	
44428-1808	18	A	YES	
44428-1809	18	B	YES	
44428-1810	18	C	YES	
NOT ASSIGNED	18	A	NO	
NOT ASSIGNED	18	B	NO	
NOT ASSIGNED	18	C	NO	
44428-2008	20	A	YES	B
44428-2009	20	B	YES	
44428-2010	20	C	YES	
NOT ASSIGNED	20	A	NO	
NOT ASSIGNED	20	B	NO	
NOT ASSIGNED	20	C	NO	
44428-2208	22	A	YES	
44428-2209	22	B	YES	
44428-2210	22	C	YES	
NOT ASSIGNED	22	A	NO	
NOT ASSIGNED	22	B	NO	
NOT ASSIGNED	22	C	NO	
44428-2408	24	A	YES	B
44428-2409	24	B	YES	
44428-2410	24	C	YES	
NOT ASSIGNED	24	A	NO	
NOT ASSIGNED	24	B	NO	
NOT ASSIGNED	24	C	NO	

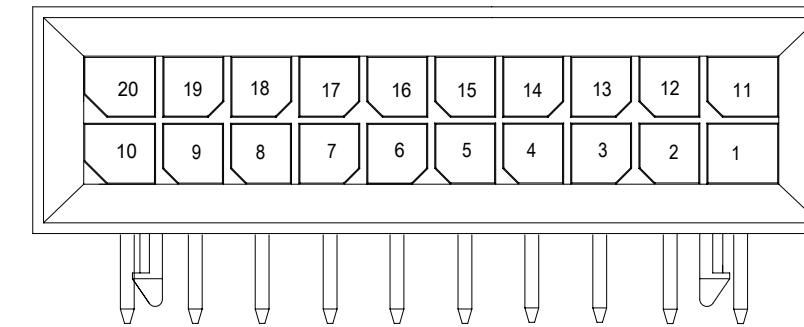
POLARIZATION LAYOUT
4-24 CIRCUITS



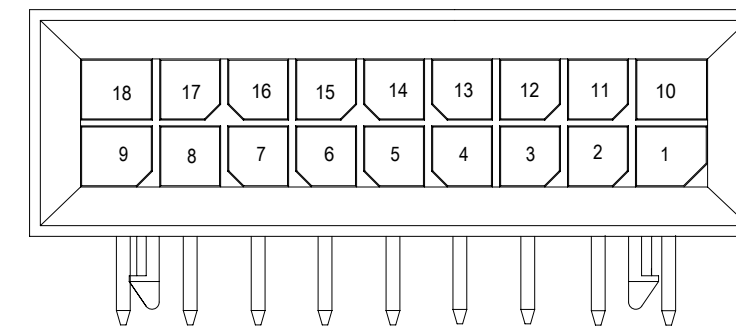
24 CIRCUIT



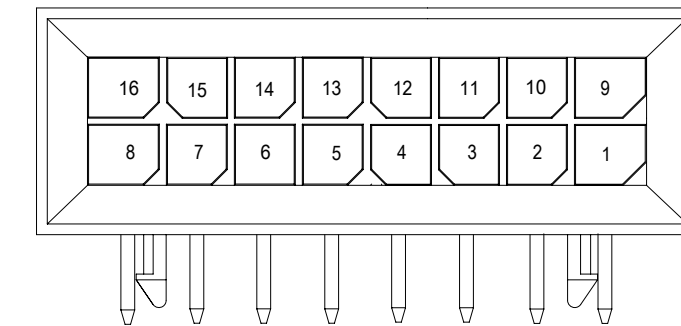
22 CIRCUIT



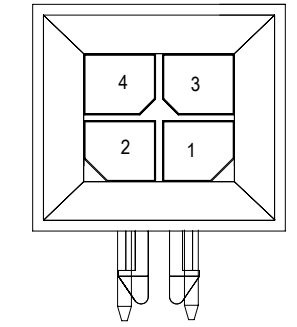
20 CIRCUIT



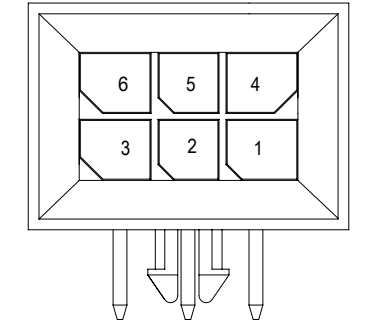
18 CIRCUIT



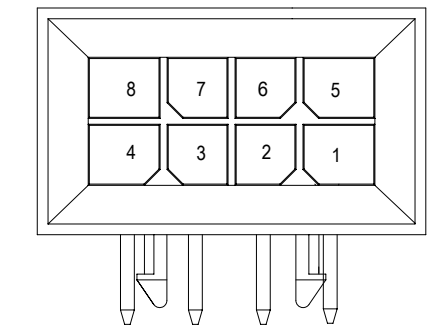
16 CIRCUIT



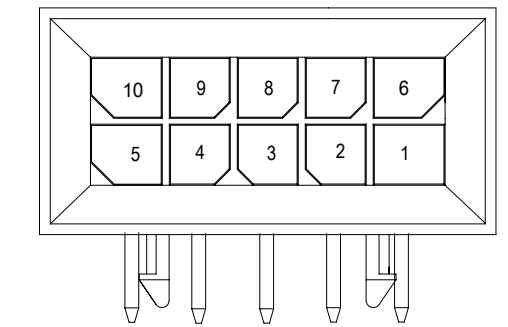
4 CIRCUIT



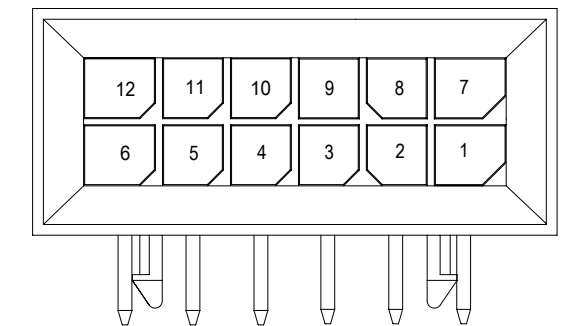
6 CIRCUIT



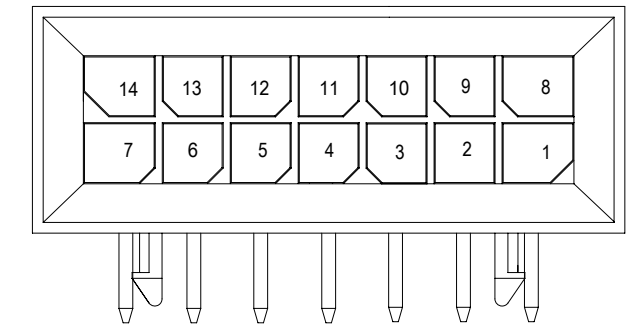
8 CIRCUIT



10 CIRCUIT



12 CIRCUIT



14 CIRCUIT

SYMBOLS = 0 = 0 = 0 = 0 = 0 = 0 = 0 = 0	THIS DRAWING CONTAINS INFORMATION THAT IS PROPRIETARY TO MOLEX ELECTRONIC TECHNOLOGIES, LLC AND SHOULD NOT BE USED WITHOUT WRITTEN PERMISSION DIMENSION UNITS: IN/MM SCALE: NTS		CURRENT REV DESC: ADD 44428-XX10 P/N'S; FINISH "A" TO MATTE SN; ADD LCP HOUSING MATERIAL		
	GENERAL TOLERANCES (UNLESS SPECIFIED)		EC NO: 629554 DRWN: JEHRISMAN 2019/12/20 CHK'D: SSOUSEK 2020/01/03 APPR: FSMITH 2020/01/08		
4 PLACES ± ± 3 PLACES ± ± 0.01 2 PLACES ± 0.25 ± 0.015 1 PLACE ± 0.38 ± 0 PLACES ± ± ANGULAR TOL ± 0.5 °		INITIAL REVISION: DRWN: SSOUSEK 2009/06/01 APPR: FSMITH 2016/02/15		PRODUCT CUSTOMER DRAWING	
DRAFT WHERE APPLICABLE MUST REMAIN WITHIN DIMENSIONS		THIRD ANGLE PROJECTION		DRAWING SERIES: C-SIZE 44428	
DOCUMENT STATUS P1 RELEASE DATE 2020/01/08 22:40:03		DOCUMENT NUMBER SD-44428-006 DOC TYPE PSD DOC PART 001 REVISION A4		MATERIAL NUMBER SEE TABLE CUSTOMER GENERAL MARKET SHEET NUMBER 2 OF 2	