



# Series 226E

## 3.5x2.9mm Compact Tactile Switch

- Surface mount gull-wing terminal configurations
- Compatible with IR reflow and manual soldering



### Ordering Information

Series	Terminal Type	Actuating Direction	Actuator Height "L"	Actuator Force	Packaging	Boss	Ground Termin
226E	M1	S	A	A	R	B	G

Code	Spec.
M1	Surface mount gull wing type 1
M2	Surface mount gull wing type 2

Code	Spec.
S	Side

Code	Spec.
A	3.55mm

Code	Spec.
A	160 gf, black
B	220 gf, white

Code	Spec.
B	With boss (Only for M1 termination, white housing)
Blank	No boss (black Housing)

Code	Spec.
G	With ground terminal
Blank	No ground terminal

Code	Spec.
R	Tape & reel packaging

Notes: Contact CTS for other common features not listed.



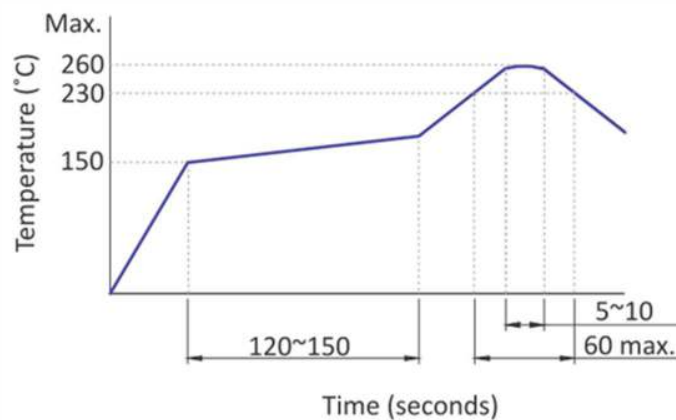
### Electrical Specifications

Parameter	Conditions & Remarks	Min	Max	Unit
Contact Resistance			500	milliohms
Insulation Resistance	Between insulated terminals	100		Megohms
Dielectric Strength	1 minute between adjacent switches		250	VAC
Nonswitching Rating			50 or 12	mA or VDC

### Mechanical and Environmental

Soldering	Maximum reflow temperature, 260°C for 5 seconds Maximum manual temperature, 350°C for 3 seconds
RoHS	Lead-Free. Fully compliant to RoHS Directive 2011/65/EU
Operating Force	160 <sup>+70</sup> <sub>-40</sub> gf 220 <sup>+80</sup> <sub>-70</sub> gf
Actuation Life	1,000,000 cycles
Actuator Strength	2 Kgf maximum
Travel	0.2 <sup>+0.2</sup> <sub>-0.1</sub> mm
Packaging	Standard tape and reel packaging
Operating Temperature Range	-40°C to +85°C
Storage Temperature Range	-40°C to +85°C

### Soldering Profile



### Mechanical Specifications

Figure 1 – 226EM1...(B), Surface Mount Gull Wing Type 1, No Ground Terminal

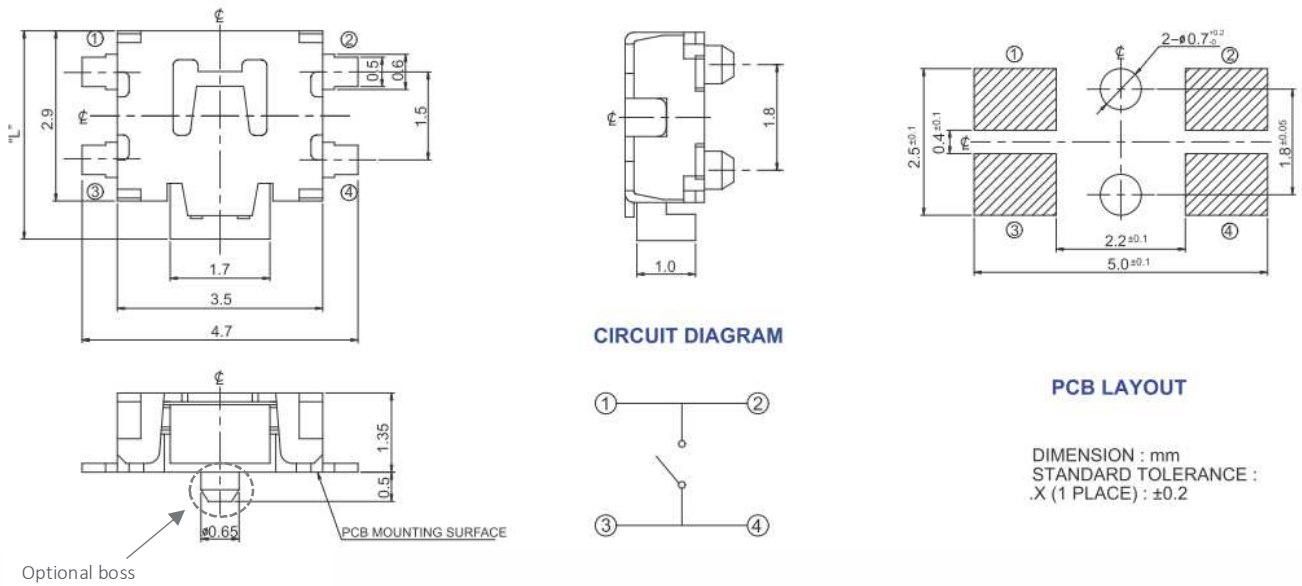


Figure 2 – 226EM2..., Surface Mount Gull Wing Type 2, No Ground Terminal

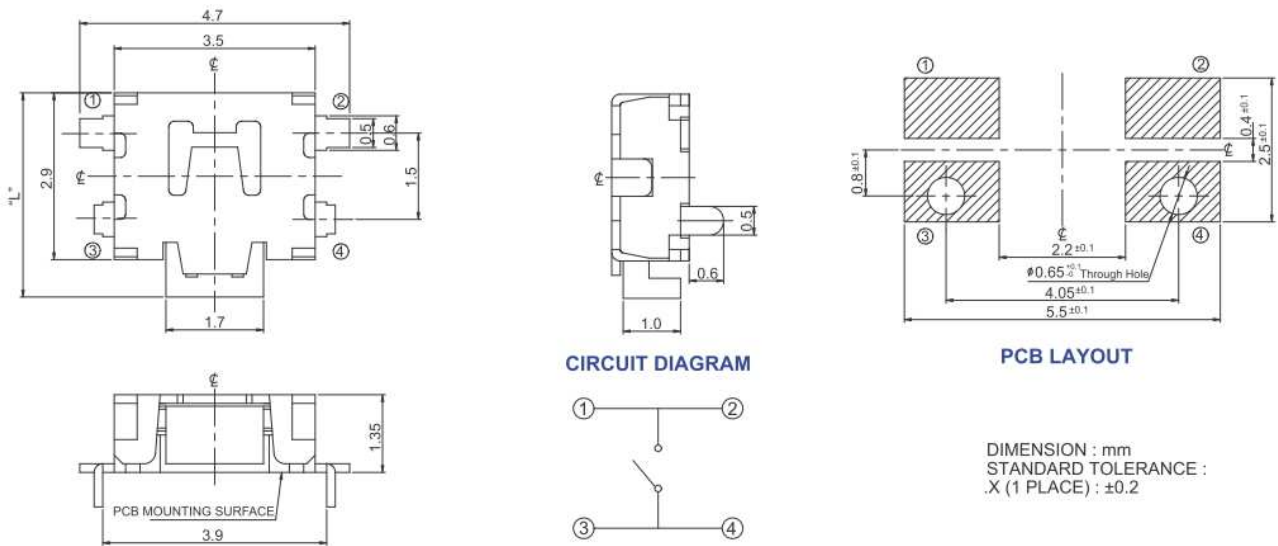


Figure 3 – 226EM1...(B)G, Surface Mount Gull Wing Type 1, With Ground Terminal

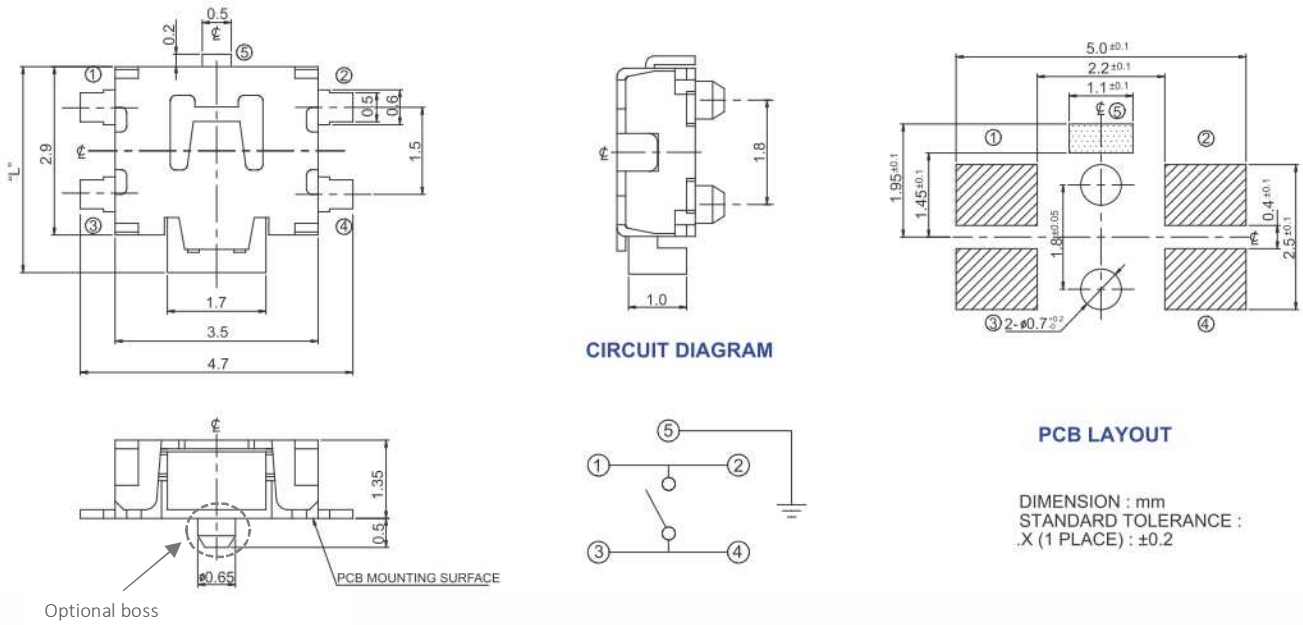
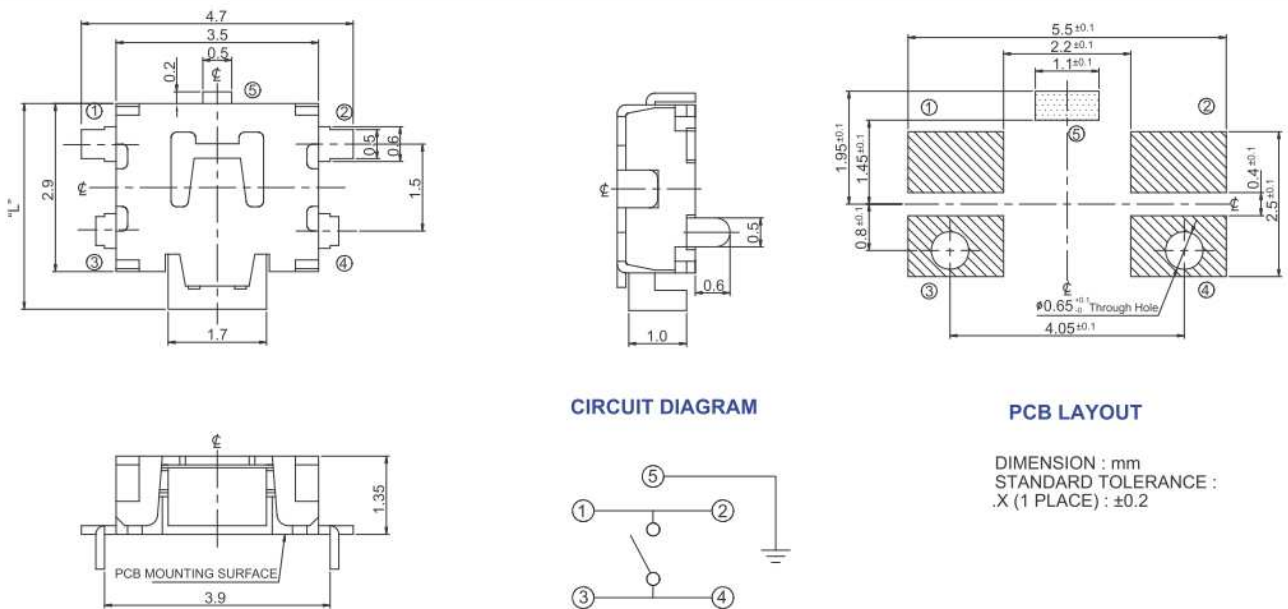


Figure 4 – 226EM2...G, Surface Mount Gull Wing Type 2, With Ground Terminal

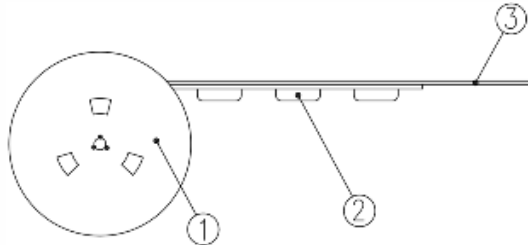


Packing: Tape and Reel

Surface Mount Gull Wing

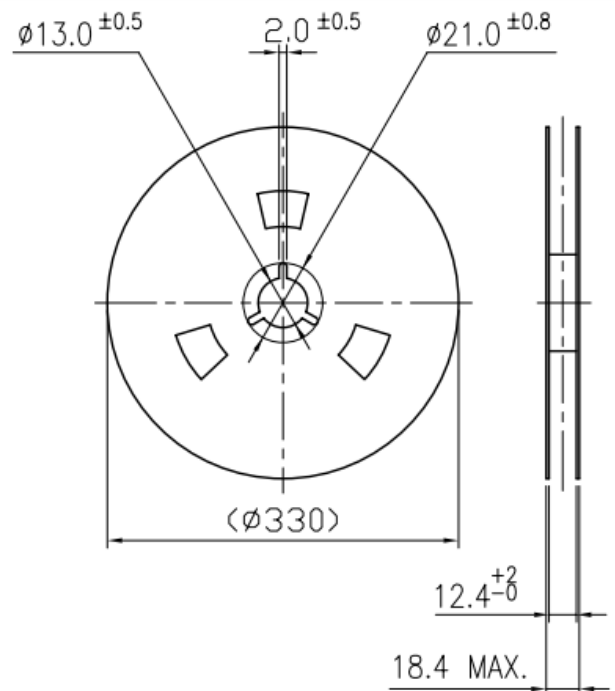
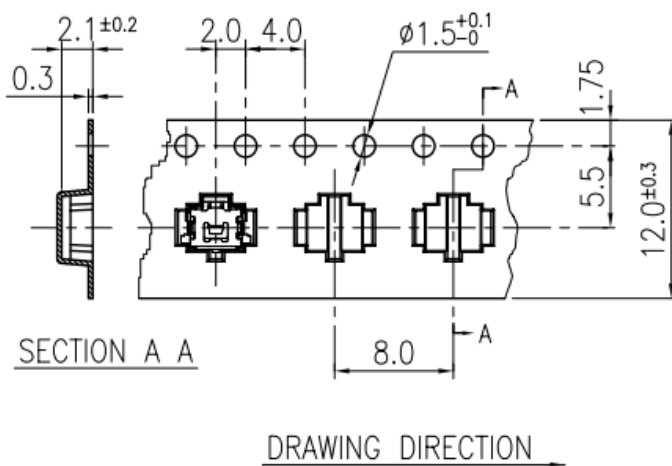
The packing specifications :

Structure and materials :



③	COVER TAPE	POLYESTER
②	CARRIER TAPE	POLYSTYRENE
①	REEL	POLYSTYRENE
NO.	PARTS NAME	MATERIALS

1. Packing quantity : 3,500 pcs/reel
2. More than 10 empty pockets should remain at each end of the carrier tape for each reel.
3. Shortage less than 10 pcs a reel is acceptable but no more than 3 consecutive empty pockets are allowed.
4. Stripping strength of cover tape is between 10 gf to 70 gf and stripping angle should be within 165°~180°.
5. The product in the pocket of carrier tape should be placed in a specified correct position.
6. Tape and reel per EIA-481.
7. Dimensions :



COVER TAPE

