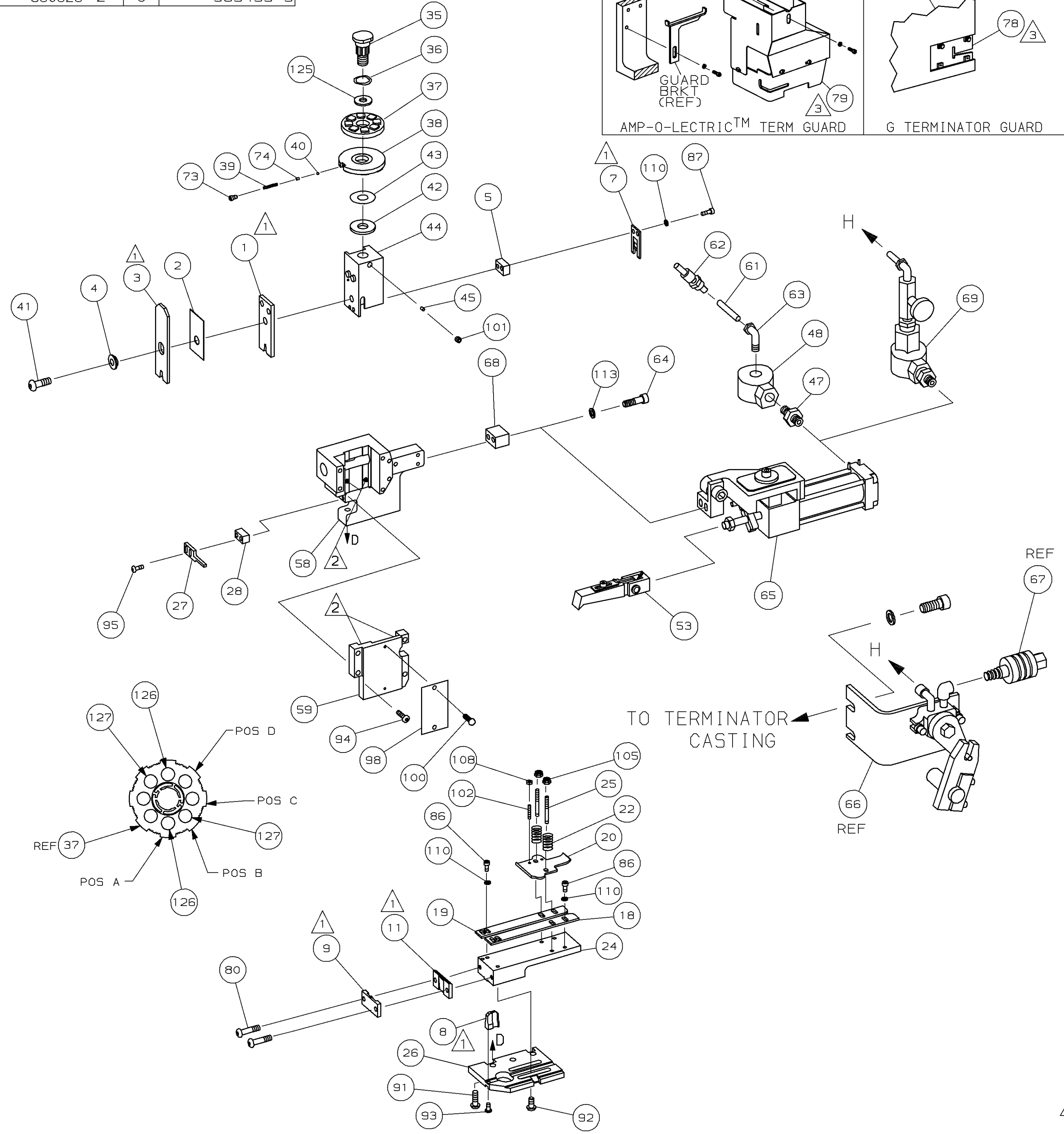
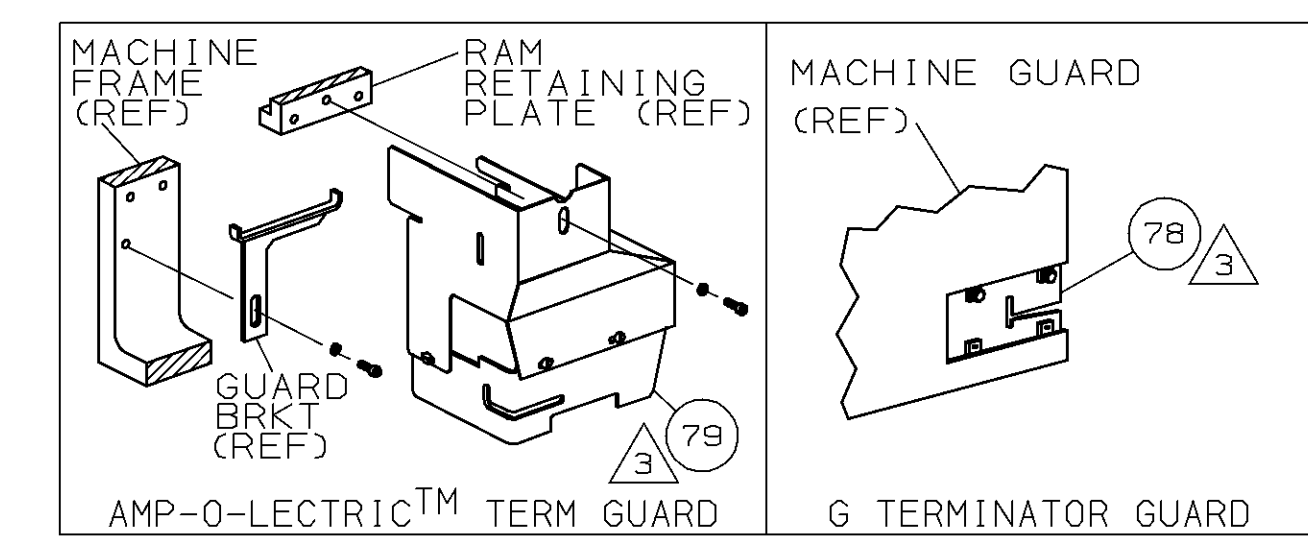


PART NUMBER	REV	FIRST USED
680628 -1	C	122500-1
680628 -2	C	565435-5



- ① RECOMMENDED SPARE PARTS.
- ② GREASE LIGHTLY.
- ③ GUARD MUST BE IN PLACE WHEN OPERATING APPLICATOR IN A BENCH MACHINE.
- ④ SEE DRAWING FOR COMPONENTS
- ⑤ ITEM 78 USED WITH G TERMINATOR ONLY.

TERMINAL NAME: TERMINAL, STRAIGHT RING			
286716	CRIMP DATA	(NON-AMP TERMINAL-AMP SPEC)	
PAD LTR	CRIMP HEIGHT	WIRE SIZE	
A	.142 ±.002 [3.61 ±0.05mm]	10	
B	.130 ±.002 [3.30 ±0.05mm]	12	
C	NOT	USED	
D	NOT	USED	
CRIMP	SIZE	TYPE	RANGE
WIRE	.210 [5.33mm]	F	12-10
INSUL	.280 [7.11mm]	F	.150-.195
WIRE STRIP LENGTH	TERM APPL SPEC	FEED	APPL INSTRUCTION
.281-.312	NONE	1.329	408-8039
		SET UP GAGE	LAYOUT
		458638-1	L2079

QTY	REV	U/M	DWG SIZE	PART NO	DESCRIPTION	ITEM NO
						129
						128
2	2	-	C	PN	PIN PN AND THICKNESS	127
2	2	-	C	PN	PIN PN AND THICKNESS	126
1	1	-	A	986950-1	WASHER, FLAT PRECISION	125
1	1	-	A	217238-1	GENERAL INSTRUCTION PACKAGE	124
1	1	-	-	4088039	EF APPL INST 408-8039	123
						122
						121
						120
						119
						118
						117
						116
						115
						114
2	2	-	A	21024-5	WASHER, LOCK (#10) AIR ASSY	113
						112
4	4	-	A	21024-4	WASHER, LOCK (NO. 8) SHEAR BL	110
						109
2	2	-	A	21018-4	NUT, HEX (4-40) DRAG	108
						107
						106
2	2	-	A	21022-2	NUT, HEX SL (8-32) DRAG STUD	105
						104
						103
2	2	-	A	2-21006-6	SCR, SKT SET (4-40x.62) DRAG	102
1	1	-	A	21009-2	SCR, SKT SET (1/4-20x.25 ) RAM	101
2	2	-	A	21017-2	SCR, DRIVE (#2x.19) ID PLATE	100
						99
1	1	-	B	461264-1	PLATE, IDENTIFICATION	98
						97
						96
2	2	-	A	2-21002-2	SCR, BHC (8-32x.50) STRIPPER	95
4	4	-	A	2-21002-9	SCR, BHC (10-32x.75) CAP	94
1	1	-	A	22733-8	SCR, BHC (8-32x.38 LW) ANVIL	93
4	4	-	A	3-21002-3	SCR, BHC (1/4-20x.50) ST 6D PL	92
3	3	-	A	2-22733-8	SCR, BHC (1/4-20x.62) HSG	91
						90
						89
						88
2	2	-	A	3-21000-0	SCR, SHC (8-32x.88) SLUG BLADE	87
4	4	-	A	.25	SCR, SHC (8-32x) STRIP GUIDE	86
						85
						84
						83
						82
						81
2	2	-	A	3-21002-0	SCR, BHC (10-32x.88) SHEAR PL	80
1	-	-	A	455750-7	GUARD ASSY	79
-	REF	-	A	679532-1	INSERT, GUARD	78
						77
						76
						75
1	1	-	A	690603-1	SPRING, ASSIST	74
1	1	-	A	23030-1	SCR, SKT CAP (6-32x.25) CP DSC	73
						72
						71

QTY	REV	U/M	DWG SIZE	PART NO	DESCRIPTION	ITEM NO
-2	-1	U/M	DWG SIZE	PART NO	DESCRIPTION	ITEM NO

REVISION RECORD			
C	0150-8968-98	CE	12/98
B	0150-8900-98	CE	10/98
A	REVISED	CE	8/98
P/F	LTR	APP	DATE

QTY	REV	U/M	DWG SIZE	PART NO	DESCRIPTION	ITEM NO	
-1					LEADMAKER & BENCH MODEL G	AIR FEED	
-2					BENCH MODEL K	AIR FEED	
4	1	-	C	692655-5	AIR FEED VALVE ASSY	70	
1	1	-	A	461690-1	SPACER, AIR FEED	69	
REF	-	-	A	24042-2	VALVE, SHUT OFF	67	
4	REF	-	C	692655-6	AIR FEED VALVE ASSY	66	
4	1	1	-	B	460277-2	AIR FEED ASSY (2 INCH)	65
2	2	-	A	4-21000-3	SCR, SHC (10-32x2.00) AIR ASSY	64	
-	1	-	A	980285-2	ELBOW, SWIVEL 1/8 NPT - 1/4 T	63	
-	1	-	A	23238-1	QUICK DISCONNECT	62	
-	12.00	IN	A	27319-4	TUBING, POLY-FLO Ø.25	61	
						60	
1	1	-	C	454220-1	CAP, RAM	59	
1	1	-	D	453736-1	HOUSING	58	
						57	
						56	
						55	
						54	
4	1	1	-	B	460680-1	FEED FINGER ASSY	53
						52	
						51	
						50	
						49	
-	1	-	A	22374-7	VALVE, QUICK EXHAUST	48	
-	1	-	A	22304-1	NIPPLE, HEX 1/8 NPT	47	
						46	
1	1	-	A	690191-1	PLUG, NYLON	45	
1	1	-	C	819307-4	RAM	44	
1	1	-	A	690125-1	WASHER, LAMINATED	43	
1	1	-	A	690124-1	WASHER, RAM	42	
1	1	-	A	7-21002-9	BOLT, CRIMPER (5/16-24x1.00)	41	
1	1	-	A	23241-6	BALL, STEEL	40	
1	1	-	A	690170-1	SPRING, COMPRESSION	39	
1	1	-	C	1-690142-1	DISC, INSULATION	38	
1	1	-	D	354777-1	WIRE DISC, PLASTIC	37	
1	1	-	A	22480-5	WASHER, SPRING	36	
1	1	-	B	690212-1	POST, RAM	35	
						34	
						33	
						32	
						31	
						30	
						29	
1	1	-	B	-	SPACER, STRIPPER	28	
1	1	-	A	240639-1	STRIPPER	27	
1	1	-	D	455676-1	PLATE, BASE	26	
2	2	-	A	22354-8	DRAG, STUD	25	
1	1	-	B	455678-1	PLATE, STRIP GUIDE	24	
						23	
2	2	-	A	4-22281-1	SPRING, DRAG	22	
						21	
1	1	-	A	454177-1	DRAG, STOCK	20	
1	1	-	B	1-458030-0	GUIDE, STRIP (REAR)	19	
1	1	-	C	1-458031-0	GUIDE, STRIP (FRONT)	18	
						17	
						16	
						15	
						14	
						13	
						12	
1	1	-	B	240644-1	PLATE, REAR SHEAR	11	
						10	
1	1	-	B	690482-3	PLATE, FRONT SHEAR	9	
1	1	-	D	6-461295-5	ANVIL	8	
1	1	-	B	690474-9	BLADE, SLUG	7	
						6	
1	1	-	C	7-240641-6	SPACER, SLUG BLADE	5	
1	1	-	B	238009-7	SPACER, BLOCK CRIMPER	4	
1	1	-	C	5-456134-6	CRIMPER, INSULATION	3	
1	1	-	B	1-455888-1	SPACER, CRIMPER	2	
1	1	-	C	456430-3	CRIMPER, WIRE	1	

QTY	REV	U/M	DWG SIZE	PART NO	DESCRIPTION	ITEM NO
-2	-1	U/M	DWG SIZE	PART NO	DESCRIPTION	ITEM NO

REVISION OF EACH ASSY NO (WHEN BLANK, USE DWG REVISION)			
DR	06AUG98	APP	06AUG98
B. HIGMAN	T. ELBIN		
CHK	06AUG98	REL	06AUG98
C. ERISMAN	B. MCPHERSON		

THIS DRAWING IS A CONTROLLED DOCUMENT.

.19

THIS DRAWING IS UNPUBLISHED.  
RELEASED FOR PUBLICATION  
BY AMP INCORPORATED. ALL RIGHTS RESERVED.  
COPYRIGHT 19

LOC  
A  
DIST  
66